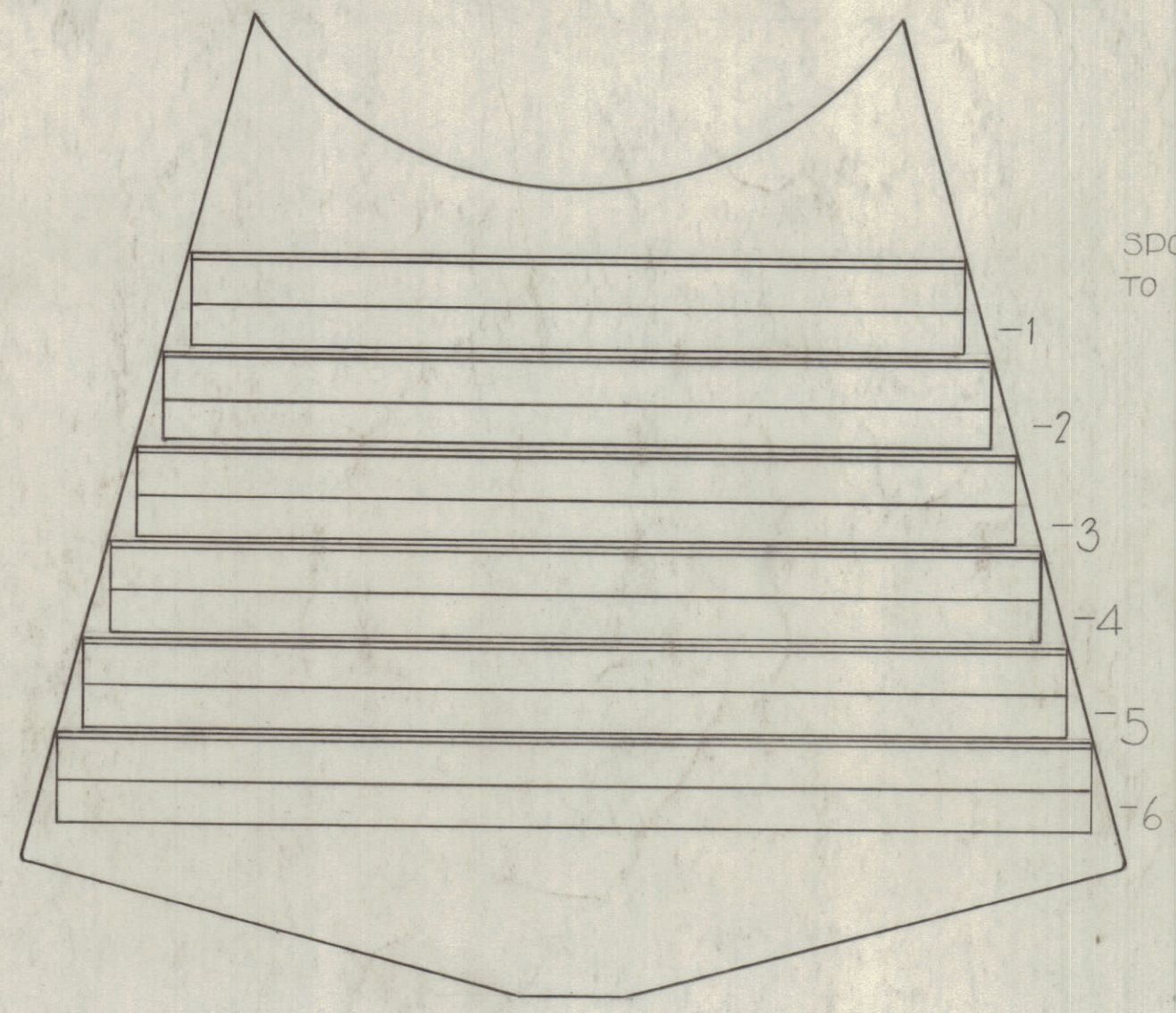


STOCKSIZE: AS NOTED  
 MAT'L: BRASS  
 TYPE: HALF HARD  
 FINISH: NONE

RING

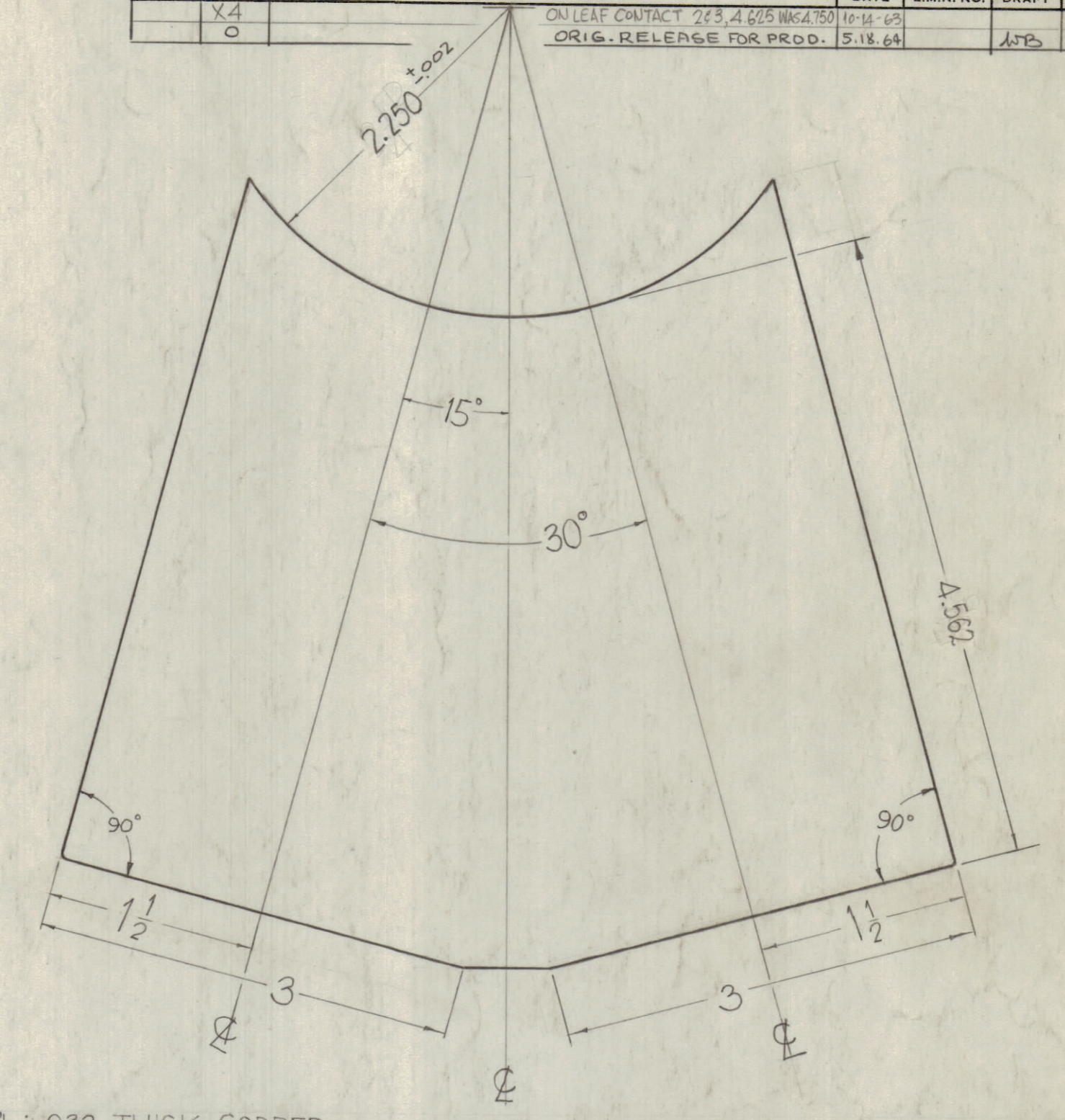


SPOTWELD FIN 1-6 TO CONTACT

A	
1	4-1/2
2	4-13/16
3	5-1/8
4	5-7/16
5	5-3/4
6	6

FIN DETAIL SPECIFICATIONS FOR LEAF & FIN  
 MAT'L: .032 THICK COPPER  
 TYPE: COLD ROLLED  
 FINISH: NONE

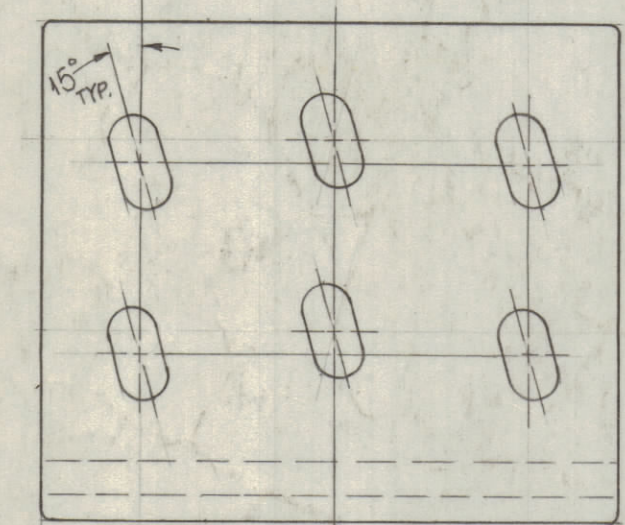
LEAF CONTACT 1



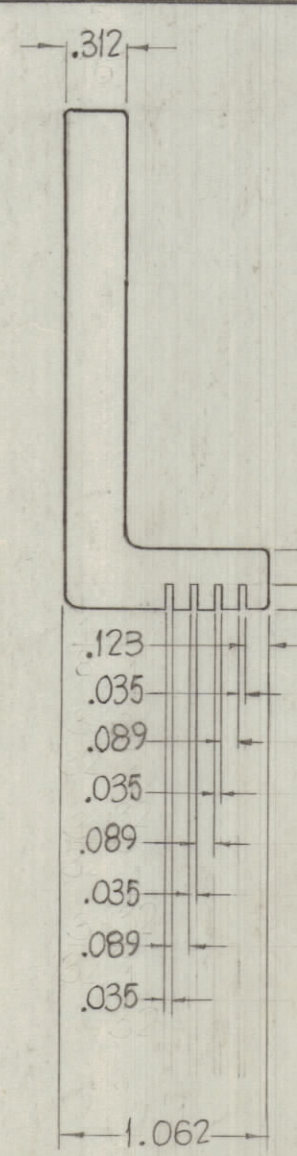
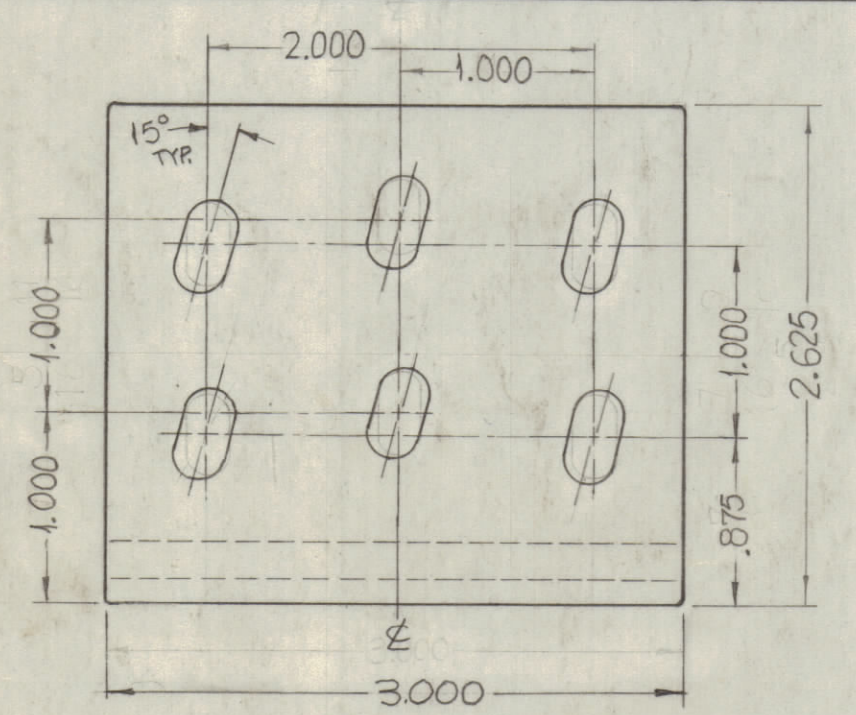
MAT'L: .032 THICK COPPER  
 TYPE: COLD ROLLED  
 FINISH: NONE

LEAF CONTACT 2,3 & 4

REVISIONS						
ZONE	SYM	DESCRIPTION	DATE	E.M.N. NO.	DRAFT	CHKD
Y4		ON LEAF CONTACT 2,3,4 625 WAGA 150	10-14-63			
G		ORIG. RELEASE FOR PROD.	5-18-64		WPS	

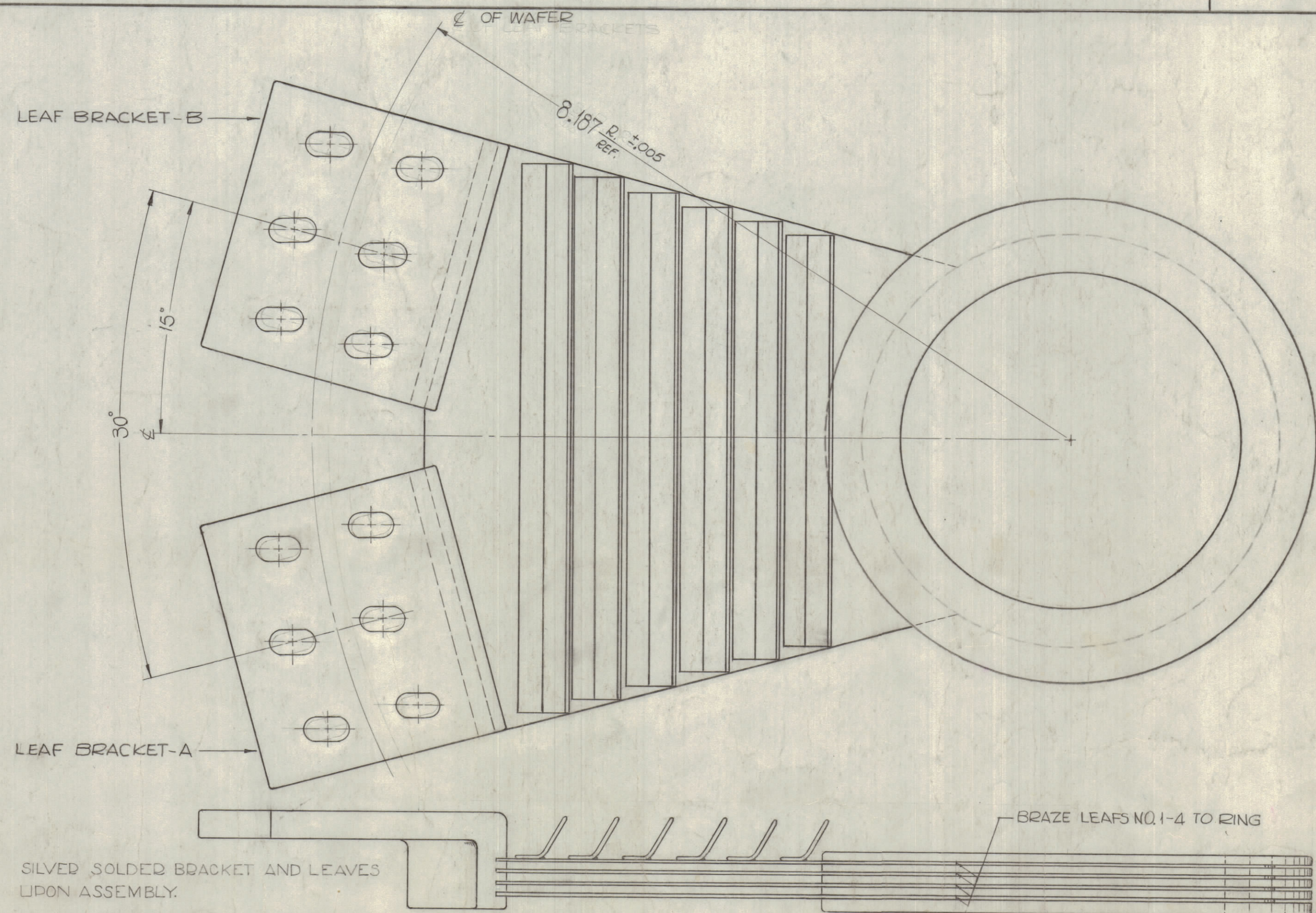


LEAF BRACKET-B  
 SAME AS BRACKET-A,  
 EXCEPT FOR SLOTS  
 FACING IN OPPOSITE  
 DIRECTION.  
 LEAF BRACKET-B



MAT'L: BRASS  
 TYPE: HALF HARD  
 FINISH: NONE  
 HOLES: 1/4 X 1/2 SLOTS (6 REQ)

LEAF BRACKET-A



SILVER SOLDERED BRACKET AND LEAVES UPON ASSEMBLY.

FINAL ASSEMBLY

NOTES:  
 - UNLESS OTHERWISE SPECIFIED  
 - POLISH BEFORE PLATING  
 - S-245 SILVER PLATE, BRIGHT  
 - S-423 IRIDIUM 18-D SILVER-KOTE  
 - SEMI-BUFF BRASS RING (AFTER PLATING)  
 - ROUND ALL CORNERS & EDGES 1/32 RADIUS, BEFORE PLATING  
 - ALL DIMENSIONS APPLY AFTER PLATING.

2	GP-200K AS-123	AX-449
SCALE	MODEL USED ON	APPY. NO.

THE CONTENTS OF THIS DRAWING ARE THE EXCLUSIVE PROPERTY OF THE TECHNICAL MATERIEL CORP. ITS UNAUTHORIZED USE OR REPRODUCTION IN WHOLE OR IN PART IS STRICTLY FORBIDDEN.

REQ'D.	ITEM	PART NUMBER	DESCRIPTION	SYMBOL
F. BUDETTI LIST OF MATERIAL				
MATERIAL				
THE TECHNICAL MATERIEL CORP. MAMARONECK, NEW YORK				
FINISH				
TITLE CONTACT, WIRED BANDSWITCH				
UNLESS OTHERWISE SPECIFIED DIMENSIONS ARE IN INCHES AND INCLUDE CHEMICALLY APPLIED OR PLATED FINISHES				
DECIMALS	FRACTIONS	DRAWN	DATE	FINAL APPROVAL
XX ± .01	± 1/64	ga	DATE	DATE
XXX ± .005	± 0° 30'	ga	DATE	DATE
MECH. DES.				REV. LTR.
DATE				REV. LTR.
SHEET				REV. LTR.

PM-860 0