

7

6

5

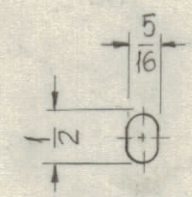
4

3

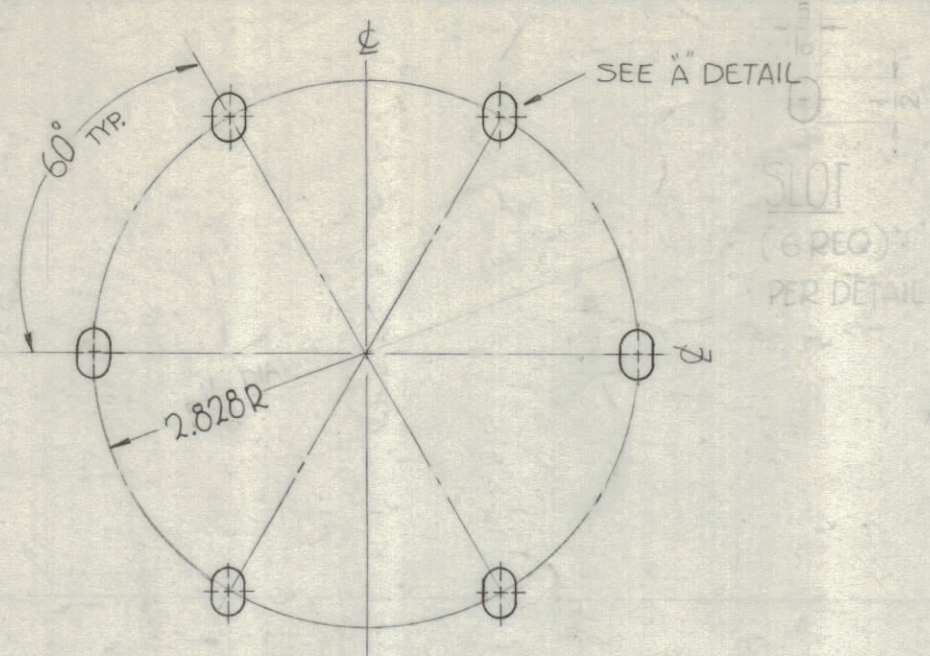
2

1

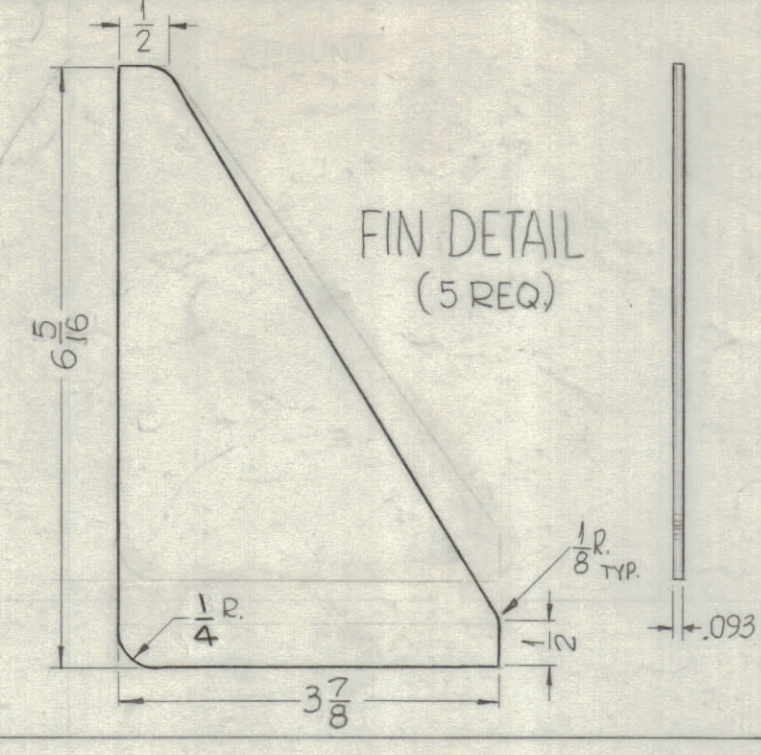
HOLES
SEE DETAIL
B-1/4 DIA (1 REQ)



A-DETAIL
(26 REQ.)



B-DETAIL (3 REQ.)



FIN DETAIL
(5 REQ.)

REVISIONS					
ZONE	SYM	DESCRIPTION	DATE	E.M.N. NO.	APPD
	O	ORIGINAL RELEASE FOR PRODUCTION	3-3-64		
F4G4	A	1/4 R WAS 3/8 R, 1/16 R TYP DELETED	4-24-64	11285 A.M.	@

H

G

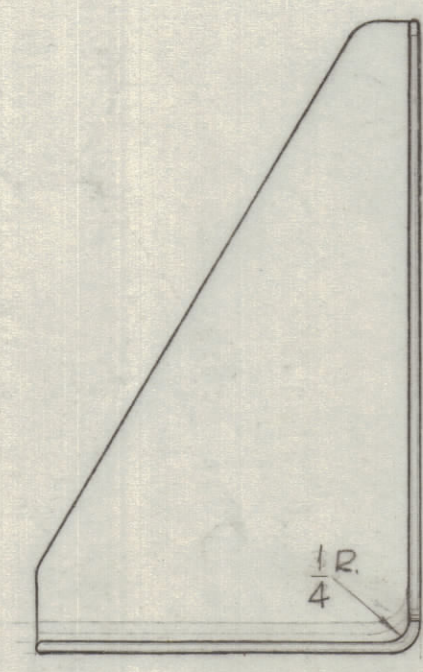
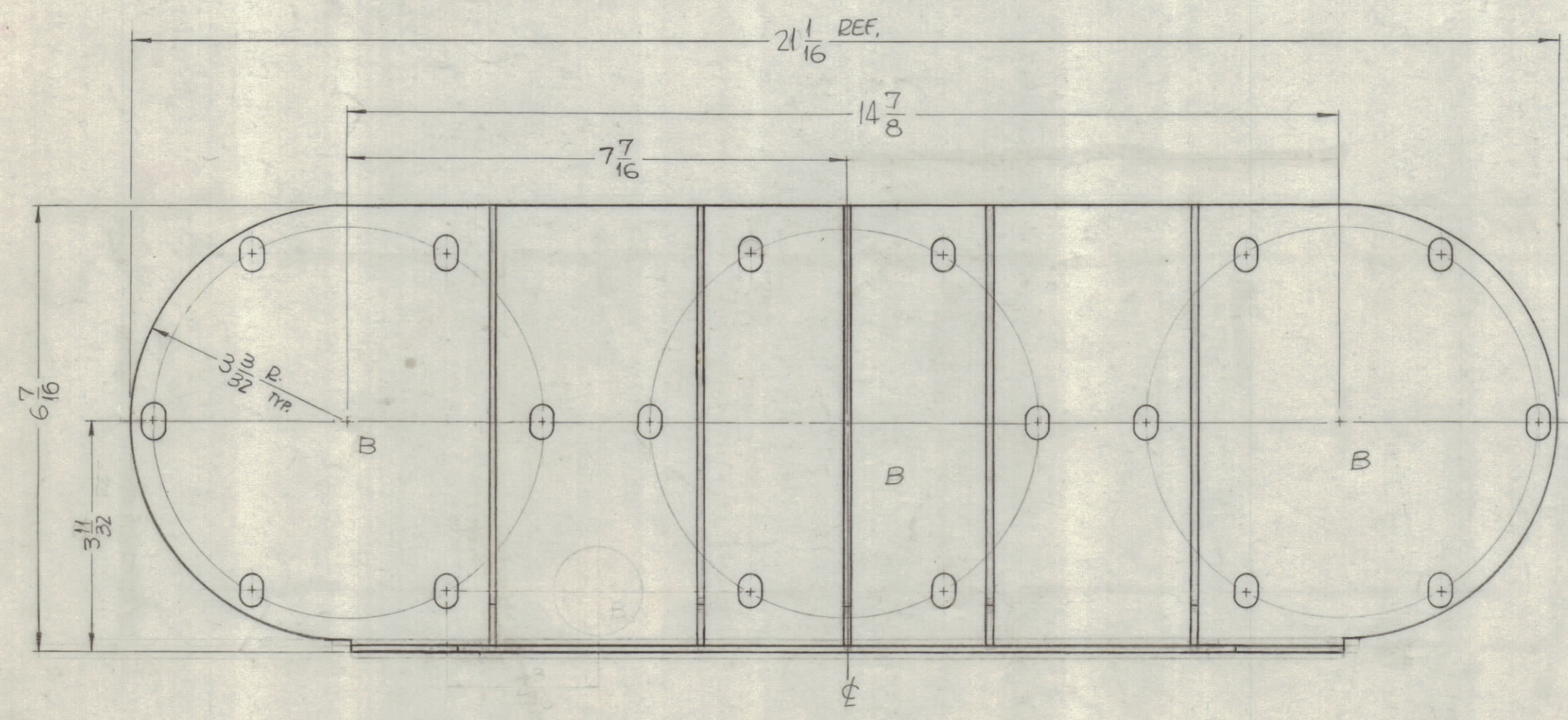
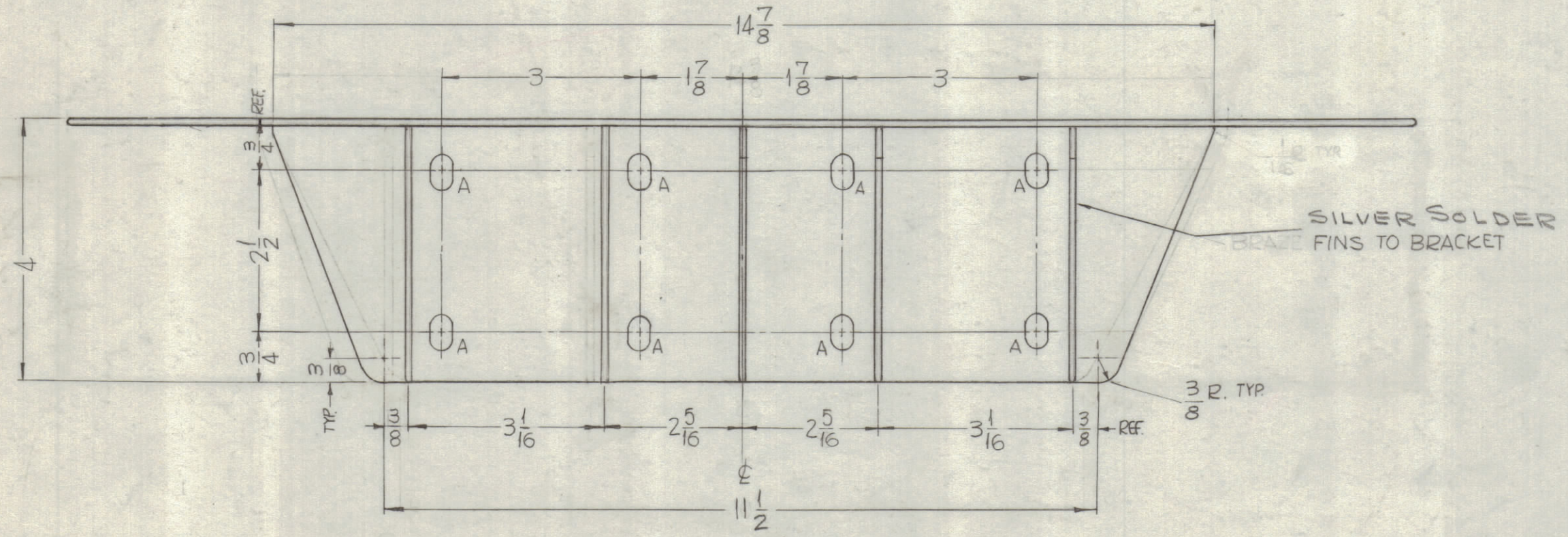
F

E

D

C

B



REF. LD-1370

- UNLESS OTHERWISE SPECIFIED:
1. USE MATERIAL THICKNESS FOR MAXIMUM RADIUS ON ALL BENDS.
 2. ALL ANGULAR BENDS 90°.
 3. REMOVE ALL BURRS AND SHARP EDGES.

NOTE:
ROUND ALL EDGES 1/32 RADIUS.
POLISH BEFORE PLATING.

NOTES

1	GPT-200K (AX-395)	A-2822
Q'TY./UNIT	MODEL USED ON	ASS'Y. NO.
SCALE	CODE	
DO NOT SCALE	A	
THE CONTENTS OF THIS DRAWING ARE THE EXCLUSIVE PROPERTY OF THE TECHNICAL MATERIEL CORP. ITS UNAUTHORIZED USE OR REPRODUCTION IN WHOLE OR IN PART IS STRICTLY FORBIDDEN.		

REQ'D.	ITEM	PART NUMBER	DESCRIPTION	SYMBOL
F. BUDETTI LIST OF MATERIAL				
MATERIAL			THE TECHNICAL MATERIEL CORP. MAMARONECK, NEW YORK	
.093 COPPER			TITLE	
FINISH			DEFLECTOR; AIR	
5-245 SILVER PLATE, BRIGHT			DRAWN SRG	
UNLESS OTHERWISE SPECIFIED			DATE 1-4-62	
DIMENSIONS ARE IN INCHES AND INCLUDE			CHECKED aa gds	
CHEMICALLY APPLIED OR PLATED FINISHES			DATE 3-2-64	
DECIMALS			ELECT. DES. RB	
.X ± .05			DATE	
.XX ± .01			DATE	
.XXX ± .005			DATE	
FRACTIONS			MECH. DES. RB	
± 1/64			DATE	
ANGLES			DATE	
± 0° 30'			DATE	
TOLERANCES			SHEET	
			REV. LTR.	

PM-882
A

7

6

5

4

3

2

1