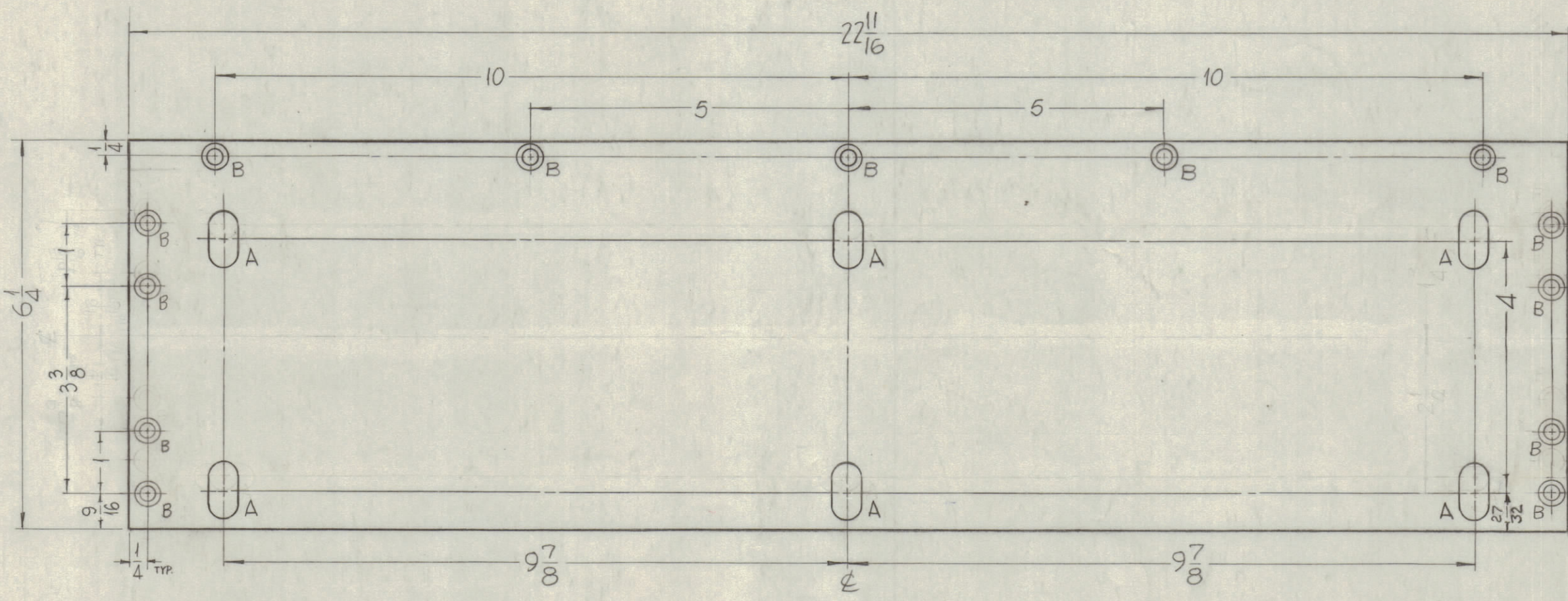
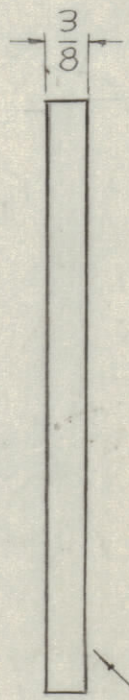


REVISIONS							
ZONE	SYM	DESCRIPTION	DATE	E.M.N. NO.	DRAFT	CHKD	APPD
	0	ORIGINAL RELEASE FOR PRODUCTION					
A3,D3	A	MAT'L WAS 3/8 THICK, DIM 27/32 WAS 5/8	8.13.64	12109	ARB	78	



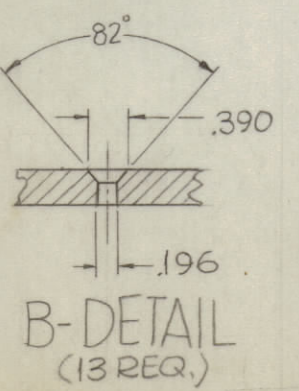
FRONT VIEW



METAL STAMP TMC PART NO. 1/8 HIGH GOTHIC ON REAR (PM-902-...), WITH LATEST REV. LETTER.

PM-902
A

HOLES:
A ~ 7/16 X 15/16 LONG SLOTS 6 REQ.
B ~ SEE DETAIL



NOTES

THE CONTENTS OF THIS DRAWING ARE THE EXCLUSIVE PROPERTY OF THE TECHNICAL MATERIEL CORP. ITS UNAUTHORIZED USE OR REPRODUCTION IN WHOLE OR IN PART IS STRICTLY FORBIDDEN.

REQ'D.	ITEM	PART NUMBER	DESCRIPTION	SYMBOL
F. BUDETTI LIST OF MATERIAL				
MATERIAL		THE TECHNICAL MATERIEL CORP. MAMARONECK, NEW YORK		
1/2 THICK ALUMINUM 2024-T4		TITLE		
FINISH		S-245 SILVER PLATE, BRIGHT		
S-245 SILVER PLATE, BRIGHT		PLATE, SUPPORT CAPACITORS		
Q'TY./UNIT	MODEL USED ON	ASS'Y. NO.	DRAWN	DATE
1	GPT-200K (AX-395)	A-3240	SRG	4-22-63
SCALE	CODE		CHECKED	DATE
#	A		AA 905	5-7-64
DECIMALS		FRACTIONS		ELECT. DES.
.X ± .05		± 1/64		DATE
.XX ± .01		ANGLES		MECH. DES.
.XXX ± .005		± 0° 30'		DATE
TOLERANCES				SHEET
				REV. LTR.

PM-902
A