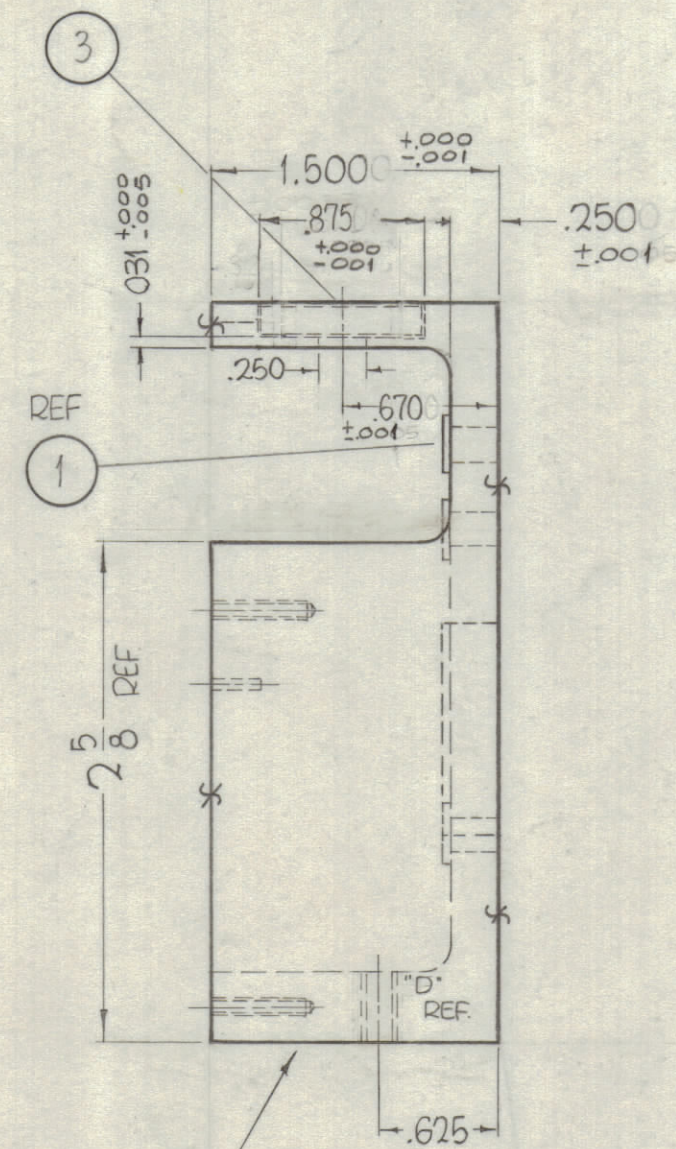
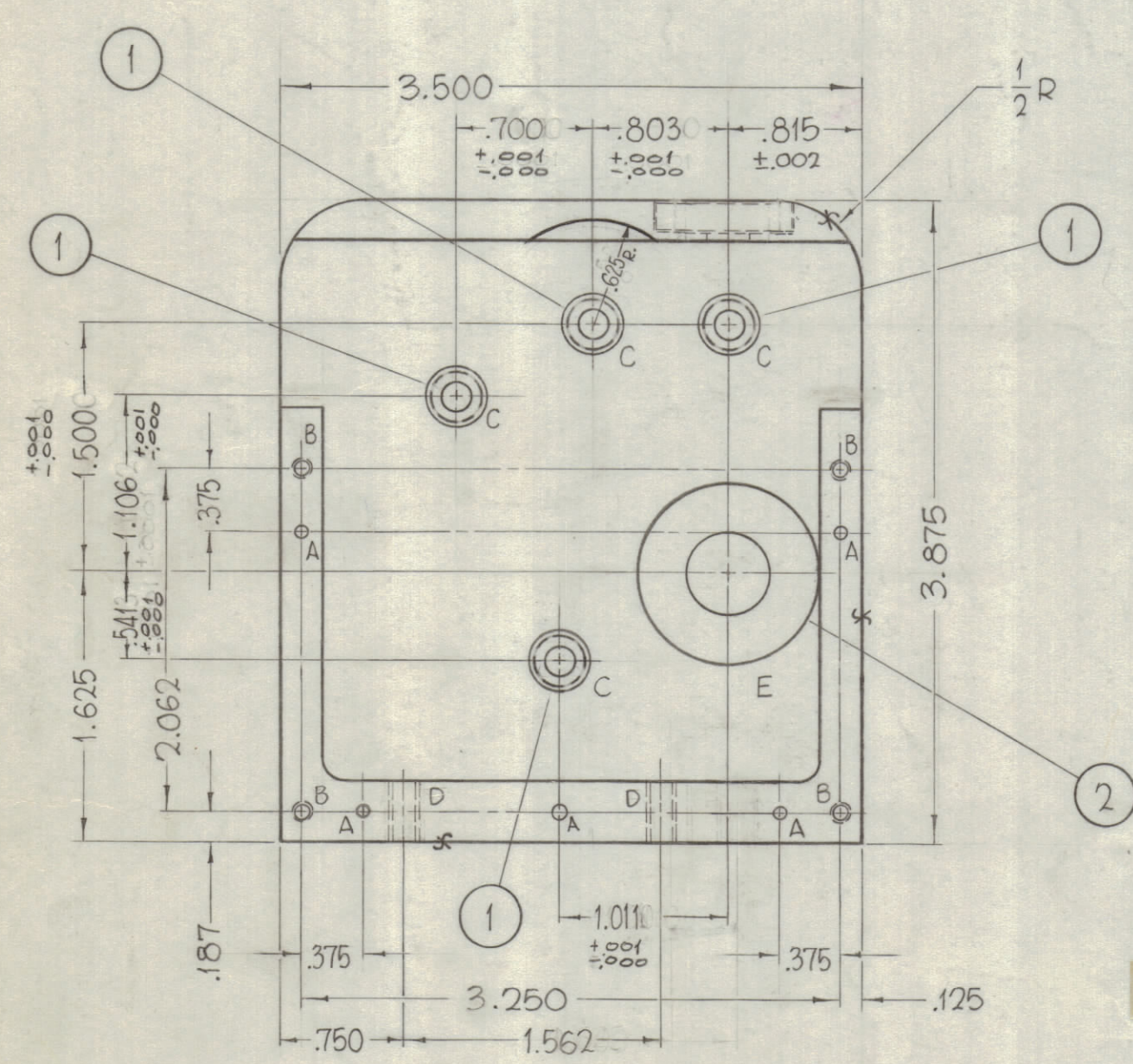
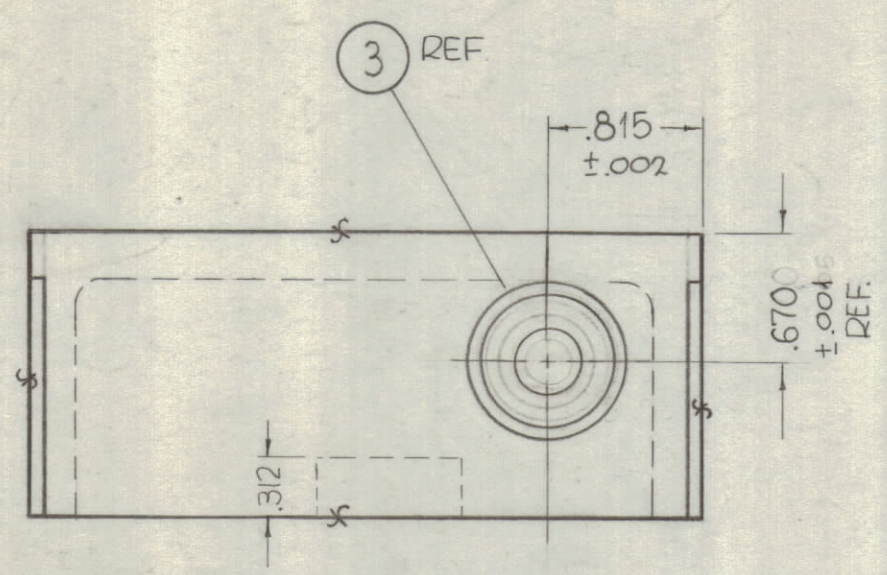


REVISIONS						
ZONE	SYM	DESCRIPTION	DATE	E.M.N. NO.	DRAFT	CHKD APPD
X	5	.031 DIM. ADDED .8750 WAS .625, ITEM 3 WAS BB-123-24 A HOLE WAS 1/16	2-18-64			
	O	ORIGINAL RELEASE FOR PRODUCTION				



METAL STAMP TMC PART NO. 1/8 HIGH GOTHIC.
(PM-925-0)

HOLES	REQ
A-.093 DIA. X 1/4 DEEP. (SEE NOTE †)	5
B- DRILL & TAP 4-40 X 1/2 DEEP	4
C- .3145 ±.0002 DIA.	4
D- DRILL & TAP 10-32 THRU	2
E- 1.1250 ±.0008 DIA.	1

REF-CASTING, TMC NO. CS-130.

* 1	3	BB-120-24	BEARING, RACE	OIL IMPREG
* 1	2	BB-120-3	BEARING, RACE	
* 4	1	BB-118-35	BEARING, FLANGE TYPE	

F. BUDETTI		LIST OF MATERIAL	
MATERIAL	SEE NOTES	THE TECHNICAL MATERIEL CORP. MAMARONECK, NEW YORK	
FINISH	SEE NOTES	TITLE MACHINING, COUNTER REDUCTION BOX (TI-1)	
SCALE	4	MODEL USED ON	A-3202
SCALE	4	CODE	A
UNLESS OTHERWISE SPECIFIED DIMENSIONS ARE IN INCHES AND INCLUDE CHEMICALLY APPLIED OR PLATED FINISHES		DRAWN John C. Biele	DATE 6-13-63
DECIMALS .X ± .05 .XX ± .01 .XXX ± .005		CHECKED JCB	DATE 3/16/64
FRACTIONS ± 1/64 ANGLES ± 0° 30'		ELECT. DES. JCB	DATE 3/16/64
TOLERANCES		MECH. DES. JCB	DATE 3/16/64
THE CONTENTS OF THIS DRAWING ARE THE EXCLUSIVE PROPERTY OF THE TECHNICAL MATERIEL CORP. ITS UNAUTHORIZED USE OR REPRODUCTION IN WHOLE OR IN PART IS STRICTLY FORBIDDEN.		FINAL APPROVAL KOC	
NOTES		DATE 4-6-64	
		SHEET PM-925-0	
		REV. LTR. 0	

UNLESS OTHERWISE SPECIFIED
FINISH- S404 - IRIDITE, 14-2, AL- COAT.
ALL FINISHES SHOWN (x) SHALL BE A CLASS 16 ($\sqrt{16}$) FINISH.
* ALL BEARINGS TO BE WRINGING FIT (CLASS-5) INSERTED AFTER MACHINING AND IRIDITING.
† SHOULD BE DRILLED AND PINNED UPON ASS'Y.

PM-925-0