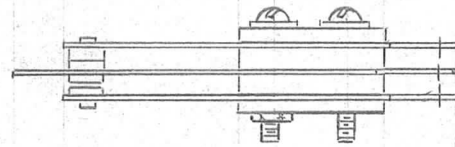
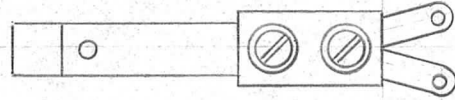


REQ. PER UNIT	USED ON			PO-154
	MODEL	ASS'Y. NO.	DATE	



NOTE:

SUPPLIED WITH $\frac{11}{16}$ LONG
INSULATED PLUNGER
2 - 4-40 X $\frac{5}{8}$ SCREW $\frac{1}{2}$
2 - FLAT WASHERS $\frac{1}{2}$
2 - 4-40 NUT-HEX.

Ref.: Dow Key - DKC-SPDT

REQ.	ITEM	PART NO.	DESCRIPTION		SYMBOL		
		<i>CTD</i>	THE TECHNICAL MATERIEL CORP.				
		STOCK SIZE	MAMARONECK, NEW YORK				
		<i>CTD</i>	SWITCH - SPDT				
		MATERIAL					
ISSUE	ITEM	CHANGED FROM	DATE	CH. NO.	DRAFTS	CHECKER	ENG. APP.
TOLERANCES			SCALE:				
DEC. DIM. \pm			MAXIMUM ALLOWABLE TOLERANCES HAVE BEEN DETERMINED AND ANY DEVIATIONS WILL BE CAUSE FOR REJECTION.				
FRAC. DIM. \pm			REMOVE ALL BURRS AND SHARP EDGES				
ANGULAR DIM. \pm			TYPE & TEMPER	HEAT TREAT. SPEC.	DRAWN	CHECKED	FINAL APPROVAL
			<i>CTD</i>	<i>CTD</i>	8-14-58 <i>ave</i>	<i>file</i>	<i>[Signature]</i>
			FINISH & SPEC. NO.	ELEC. DES. APP.	MECH. DES. APP.	PO-154	