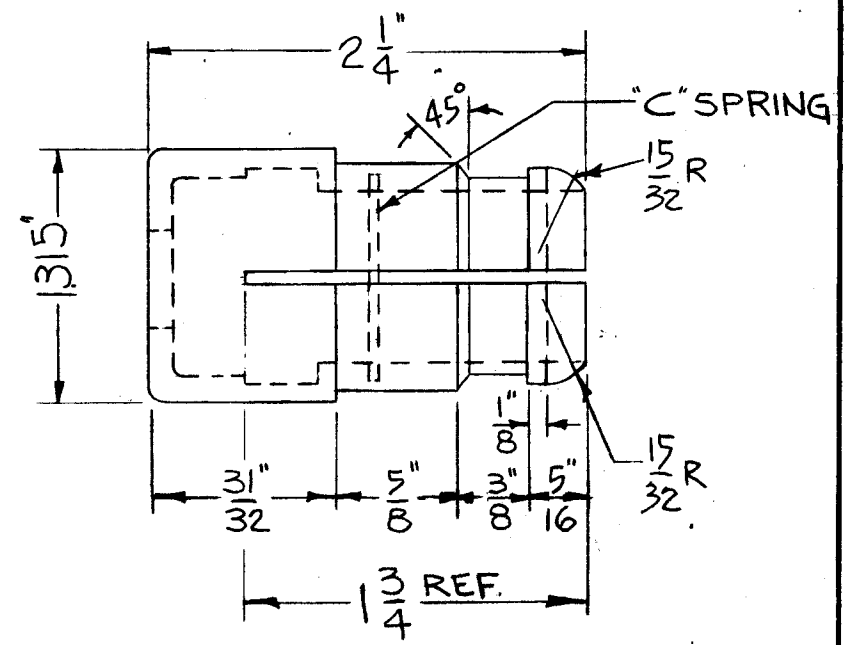
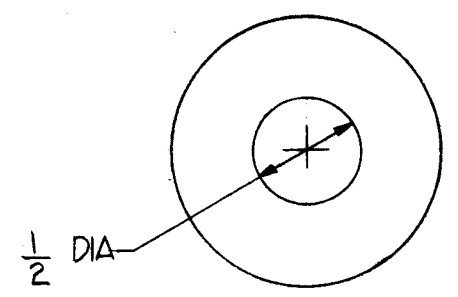


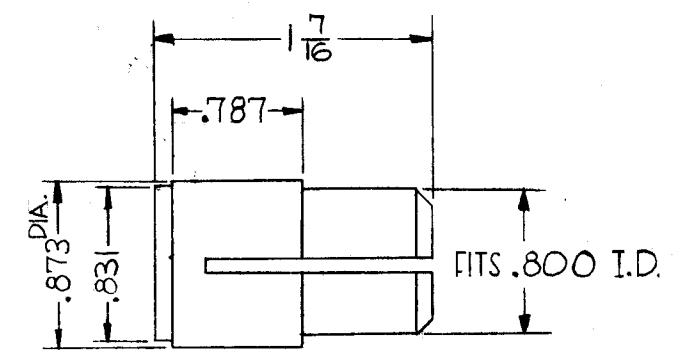
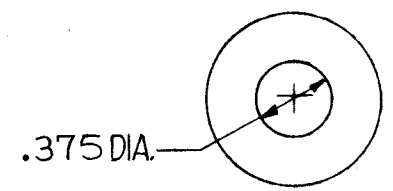
PO-203 D

THE CONTENTS OF THIS DRAWING ARE THE EXCLUSIVE PROPERTY OF THE TECHNICAL MATERIEL CORP. ITS UNAUTHORIZED USE OR REPRODUCTION IN WHOLE OR IN PART IS STRICTLY FORBIDDEN.

TMC PART NO.	IMPEDANCE
PO-203-50	50 OHM
PO-203-70	75 OHM



PO-203-50



PO-203-70

D	REFER TO EMN #10991	3-4-64	10991	JEG	<i>[Signature]</i>	<i>[Signature]</i>
C	75-Ω WAS 70-Ω (CHART) 82058 ADDED TO SCALE DIM. 1/2 DIA WAS .510; 1-5/16 WAS 2-V/4 ON - 50	7-13-62	6912	<i>[Signature]</i>	<i>[Signature]</i>	
B	COMPLETELY REDRAWN & REVISED FROM I-SIZE	1-19-62	6101	EH	<i>[Signature]</i>	<i>[Signature]</i>
SYM	DESCRIPTION	DATE	CH. NO.	DRAFTS	CHECKER	ENG. APP.
UNLESS OTHERWISE SPECIFIED: DIMENSIONS ARE IN INCHES TOLERANCES ON FRACTIONS ± 1/64 DECIMALS ± .005 ANGLES ± 1/20		SCALE: S401-31-82058				
MAXIMUM ALLOWABLE TOLERANCES HAVE BEEN DETERMINED AND ANY DEVIATIONS WILL BE CAUSE FOR REJECTION. REMOVE ALL BURRS AND SHARP EDGES		TRC-5000				
		REQ. PER UNIT	MODEL	SECTION	ASS'Y. NO.	DATE
		USED ON				

REQ. ITEM	PART NO.	DESCRIPTION	SYMBOL
		THE TECHNICAL MATERIEL CORP. MAMARONECK, NEW YORK	
STOCK SIZE		CONNECTOR, ELECTRICAL	
MATERIAL		BRASS	
		3-1/8 (STUBS)	
		EE	<i>[Signature]</i>
TYPE & TEMPER	HEAT TREAT. SPEC.	DRAWN	CHECKED
BRIGHT NICKEL		<i>[Signature]</i>	<i>[Signature]</i>
FINISH & SPEC. NO.		ELEC. DES. APP.	MECH. DES. APP.
			FINAL APPROVAL
			<i>[Signature]</i>
			PO-203
			D