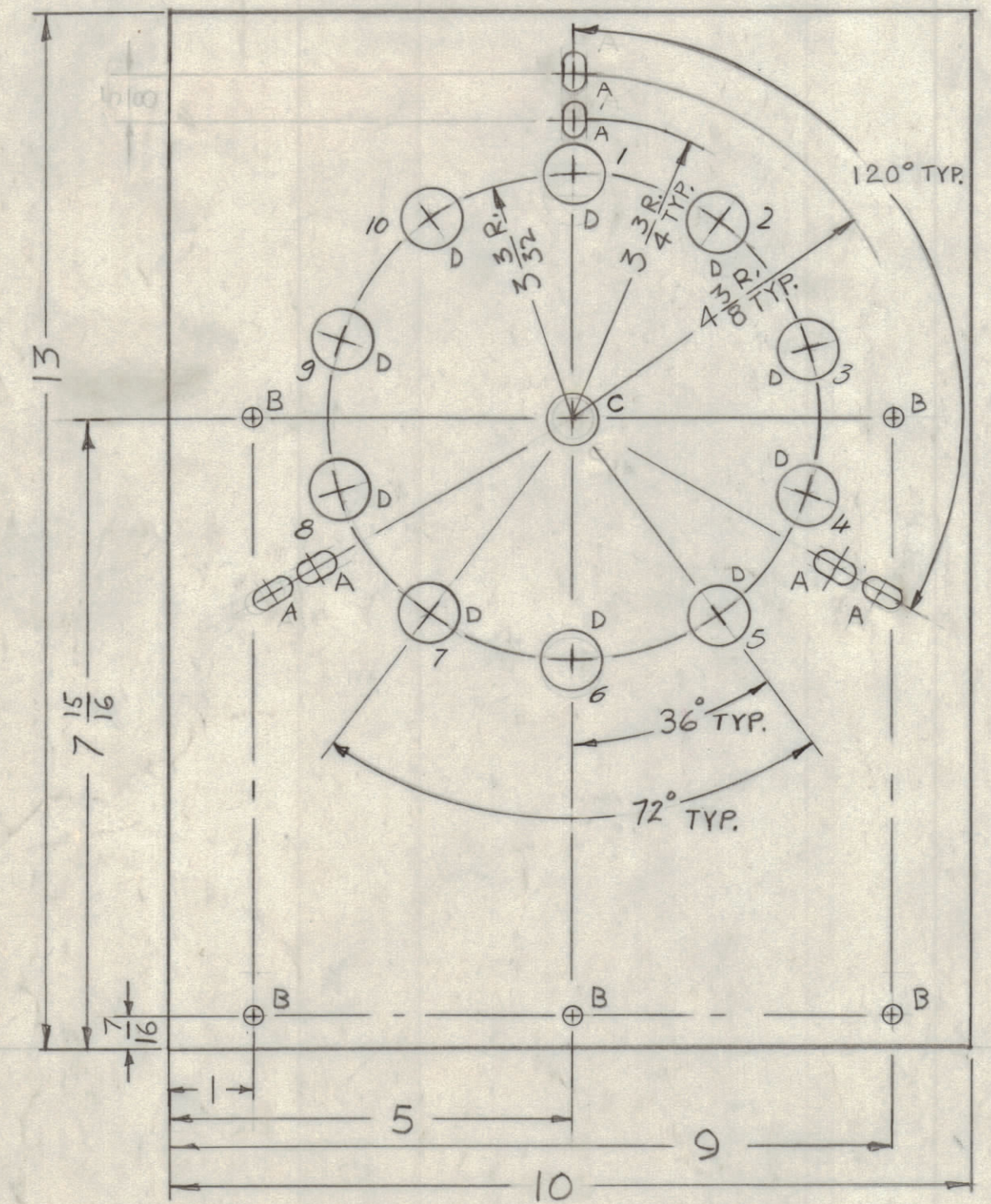


TMC P/N	HOLE#1	HOLE#2	HOLE#3	HOLE#4	HOLE#5	HOLE#6	HOLE#7	HOLE#8	HOLE#9	HOLE#10
PX1024-2	3/4 DIA.	3/4 DIA.	3/4 DIA.	3/4 DIA.	3/4 DIA.	3/4 DIA.	3/4 DIA.	3/4 DIA.	3/4 DIA.	3/4 DIA.
PX1024-3	3/4 DIA.								3/4 DIA.	

REVISIONS						
ZONE	LTR	DESCRIPTION	DATE	E.M.N.NO	DRAFT	CHKD APPD
	X	EXP. RELEASE	9-22-67			H.G.
	Ø	ORIGINAL RELEASE FOR PRODUCTION	5.7.68	Ø		H.G.
	Δ	REV. & UPDATED ON PX1024-1	8.21.68	19031		H.G. FB
	B	ADD -2, -3 & HOLE NOS	5-1-72	20641	GE	G G

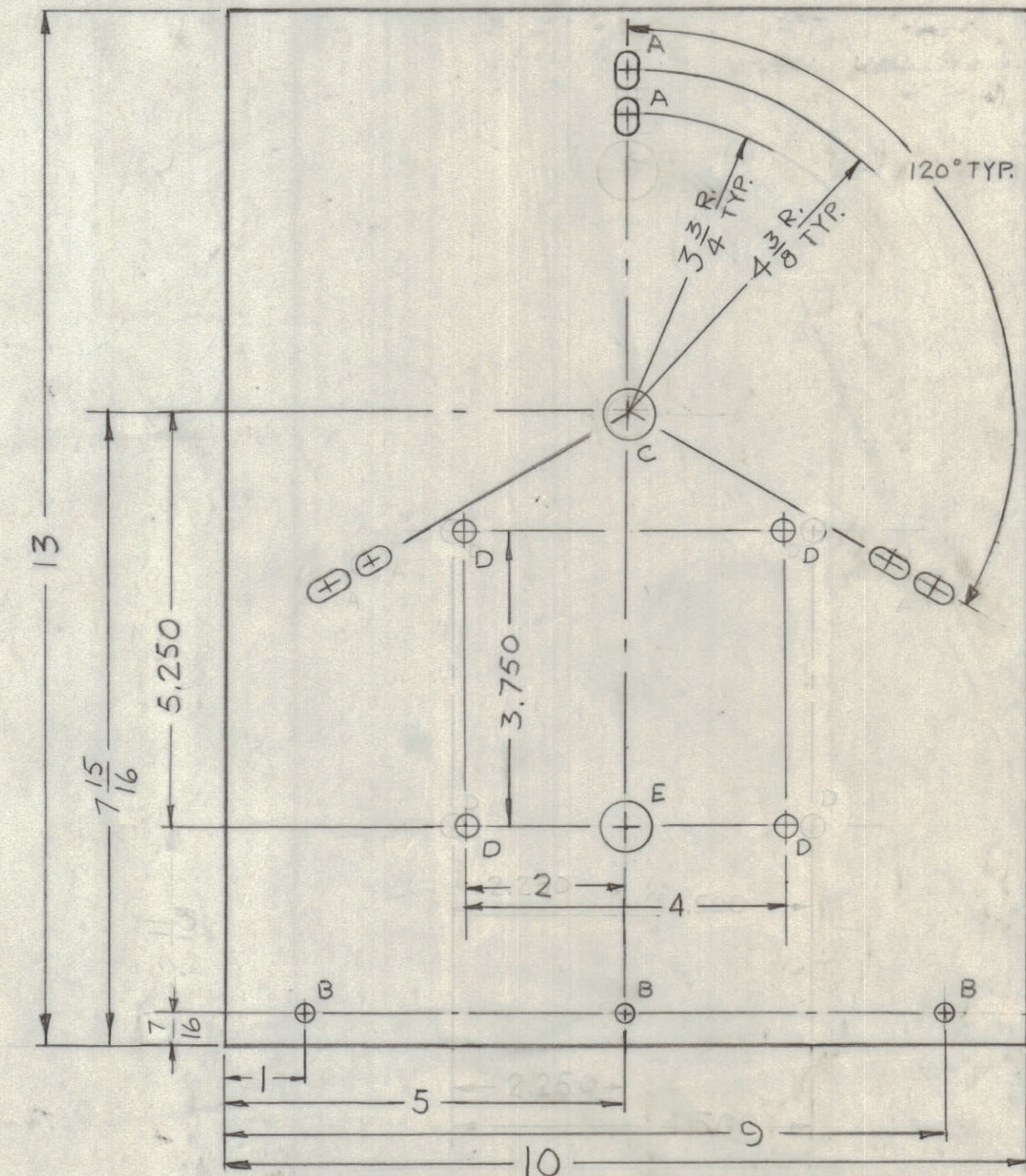
HOLE	DESCRIPTION	REQ'D
A	1/4 X 1/2 SLOT	6
B	15/64 DIA	5
C	.628 ±.0005	1
D	SEE TABLE	10

PX1024-2
REAR



HOLE	DESCRIPTION	REQ'D
A	1/4 X 1/2 SLOT	6
B	15/64 DIA	3
C	.628 ±.0005	1
D	9/32 DIA	4
E	.625 ±.0005	1

PX1024-1
FRONT



QTY. REQ.	ITEM	PART NO.	DESCRIPTION	SYMBOL
1	2	BB-126-5	BRG, BALL, ANNL	E
2	1	BB-118-30	BRG, SLV, 1/FLG	C

F. BUDETTI LIST OF MATERIAL SK3290 PX-0001-1 & 2

1	MFTRIOKE5	BMA 482
1-EA	BCT-10KA	
QTY / UNIT	MODEL USED ON	ASS'Y NO.
APPLICATION		
	CODE A	S401-451

NOTICE TO PERSONS RECEIVING THIS DRAWING
THE TECHNICAL MATERIEL CORPORATION claims proprietary right in the material disclosed hereon. This drawing is issued in confidence for engineering information only and may not be reproduced or used to manufacture anything shown hereon without permission from THE TECHNICAL MATERIEL CORPORATION to the user. This drawing is loaned for mutual assistance and is subject to recall at any time.

UNLESS OTHERWISE SPECIFIED DIMENSIONS ARE IN INCHES AND INCLUDE CHEMICALLY APPLIED OR PLATED FINISHES		FINAL APPROVAL <i>[Signature]</i>	DATE 3-7-68
TOLERANCES ON		MECH. DES. <i>[Signature]</i>	DATE 5-6-68
DECIMALS	FRACTIONS	ELECT. DES. <i>[Signature]</i>	DATE 5-7-68
.X ± .05	± 1/64	CHECKED <i>[Signature]</i>	DATE 5-7-68
.XX ± .01	ANGLES	DRAWN H.G.	DATE 9-22-67
.XXX ± .005	± 0° -30'		
MATERIAL 1/4 THK EPOXY G-11			
FINISH NATURAL S113 FUNGUS PROOF			

THE TECHNICAL MATERIEL CORP. MAMARONECK, NEW YORK			
PLATE BANDSWITCH FRONT & REAR			
SIZE	CODE IDENT. NO.	DWG NO.	ISSUE
C	82679	PX1024	B
SCALE 1:2			SHEET OF