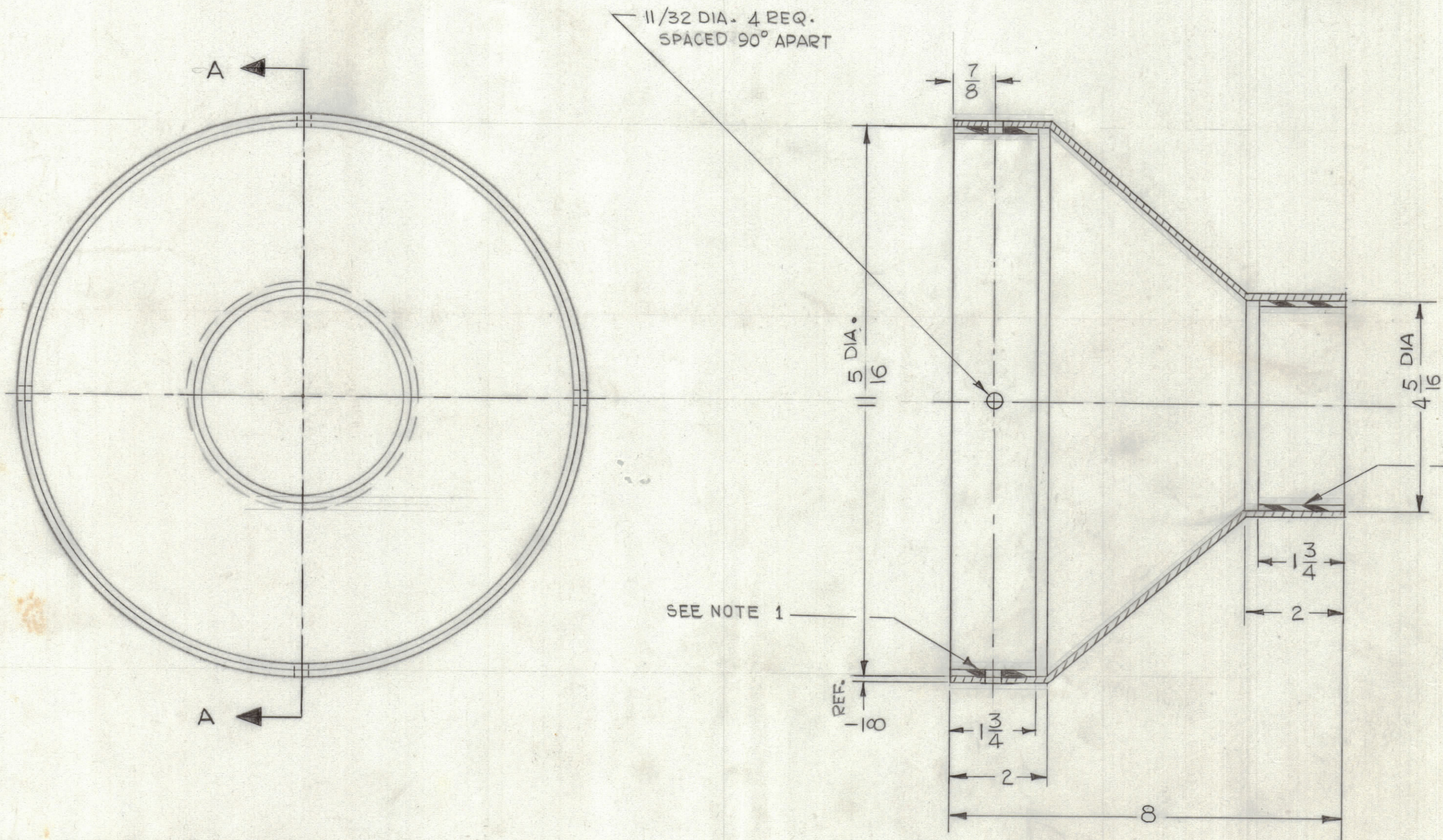


REVISIONS							
ZONE	LTR	DESCRIPTION	DATE	E.M.N.NO	DRAFT	CHKD	APPD
	X	EXP. RELEASE	8-23-68		GDL		
	Ø	ORIG. RELEASE FOR PROD.	11/1/68		R.G.		



11/32 DIA. 4 REQ.
SPACED 90° APART

SEE NOTE 1

SEE NOTE 1

SECTION A-A

NOTE:

1- CEMENT IN PLACE WITH RTV-102 ADHESIVE,
1/8 THK. SILICONE RUBBER SE 4404 U
(CLASS 400) 43 DUREMETER.

2- FINISH: NON CONDUCTIVE WHITE EPOXY PAINT
PAINT. WOOLSEY MFP EPOXY COATING
450 WHITE, CURING AGENT # 444
CURE 6 HRS @ 60°-80° F (TWO COATS)

1	AWTA-1	A4746
QTY / UNIT	MODEL USED ON	ASS'Y NO.
APPLICATION		
CODE		
NOTICE TO PERSONS RECEIVING THIS DRAWING		
THE TECHNICAL MATERIEL CORPORATION claims proprietary right in the material disclosed herein. This drawing is issued in confidence for engineering information only and may not be reproduced or used to manufacture anything shown hereon without permission from THE TECHNICAL MATERIEL CORPORATION to the user. This drawing is loaned for mutual assistance and is subject to recall at any time.		

UNLESS OTHERWISE SPECIFIED DIMENSIONS ARE IN INCHES AND INCLUDE CHEMICALLY APPLIED OR PLATED FINISHES	
TOLERANCES ON	
DECIMALS	FRACTIONS
.X ± .05	± 1/64
.XX ± .01	ANGLES
.XXX ± .005	± 0° -30'
MATERIAL	1/8 THK WALL EPOXY (FIBERGLASS)
FINISH	SEE NOTE 2

QTY. REQ.	ITEM	PART NO.	DESCRIPTION	SYMBOL
LIST OF MATERIAL SK3291-000-53				
THE TECHNICAL MATERIEL CORP. MAMARONECK, NEW YORK				
SCHROUD ANTENNA				
SIZE	CODE	IDENT. NO.	DWG NO.	ISSUE
C	82679		PX 1059	Ø
SCALE	1:2		SHEET	OF

PX 1059