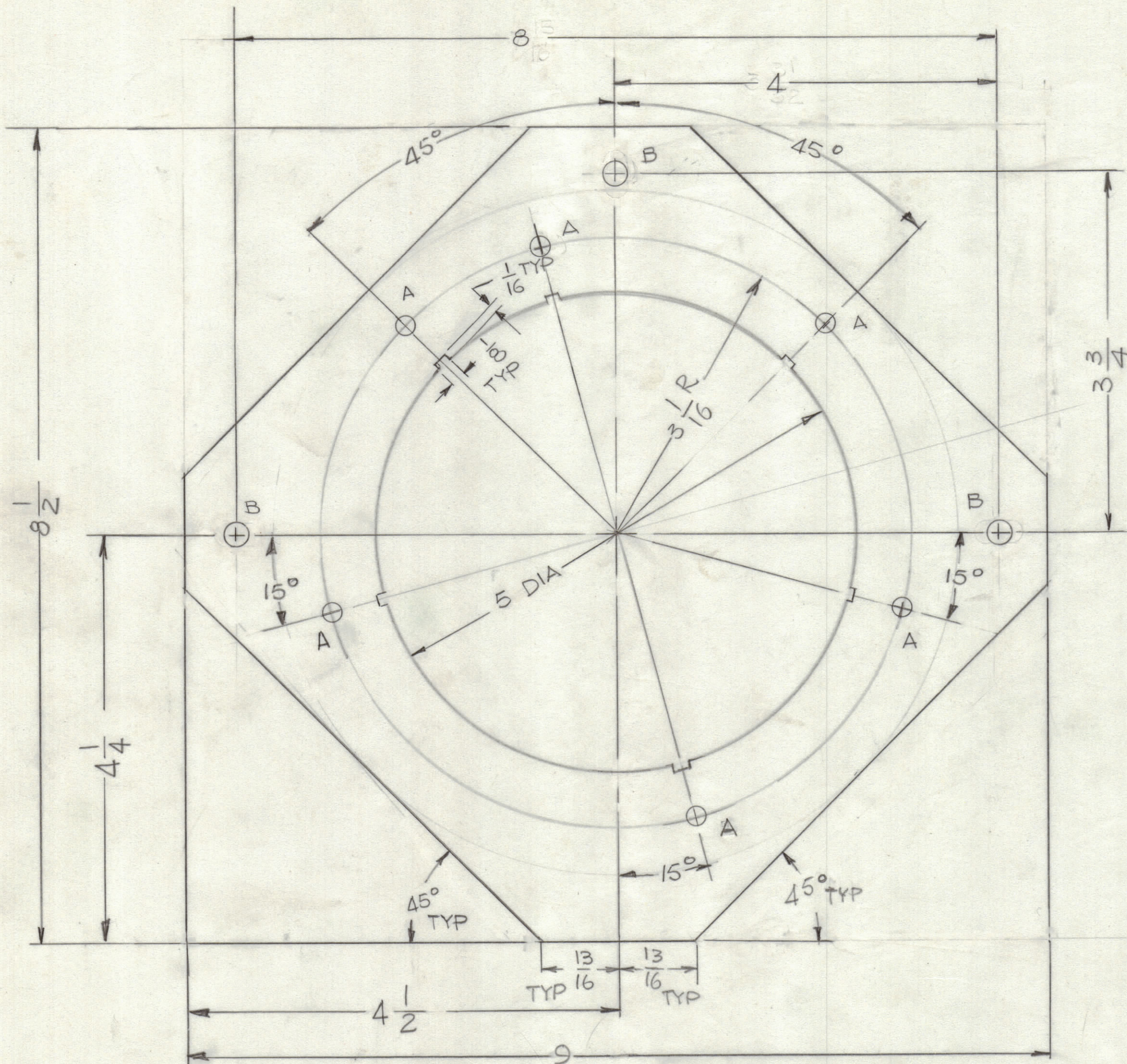


REVISIONS						
ZONE	LTR	DESCRIPTION	DATE	E.M.N.NO	DRAFT	APPD
	Ø	ORIGINAL RELEASE for PRODUCTION	5-1-81			
C-3	A	NOTCH 1/8 X 1/16 ADD	1-26-83		GDL	



HOLES -
 A - 13/64 DIA 6 REQ'D
 B - 1/4 DIA 3 REQ'D

1	MFTA-10KJ5	AS166-1
QTY / UNIT	MODEL USED ON	ASS'Y NO.
APPLICATION		
CODE		
NOTICE TO PERSONS RECEIVING THIS DRAWING		
THE TECHNICAL MATERIEL CORPORATION claims proprietary right in the material disclosed hereon. This drawing is issued in confidence for engineering information only and may not be reproduced or used to manufacture anything shown hereon without permission from THE TECHNICAL MATERIEL CORPORATION to the user. This drawing is loaned for mutual assistance and is subject to recall at any time.		

UNLESS OTHERWISE SPECIFIED DIMENSIONS ARE IN INCHES AND INCLUDE CHEMICALLY APPLIED OR PLATED FINISHES

TOLERANCES ON
 DECIMALS .X ± .05
 .XX ± .01
 .XXX ± .005

FRACTIONS ± 1/64
 ANGLES ± 0° - 30'

MATERIAL 3/8 THK EPOXY G11
 FINISH NATURAL 6113 FUNGUS PROOF

QTY. REQ.	ITEM	PART NO.	DESCRIPTION	SYMBOL
LIST OF MATERIAL				
FINAL APPROVAL DATE				
MECH. DES. DATE				
ELECT. DES. DATE				
CHECKED DATE				
DRAWN G.D.L. DATE 4-3-81				
THE TECHNICAL MATERIEL CORP. MAMARONECK, NEW YORK				
WAFER, BAND SW.				
SIZE	CODE IDENT.NO.	DWG NO.	ISSUE	
C	82679	PX 1281	A	
SCALE 1:1			SHEET	OF