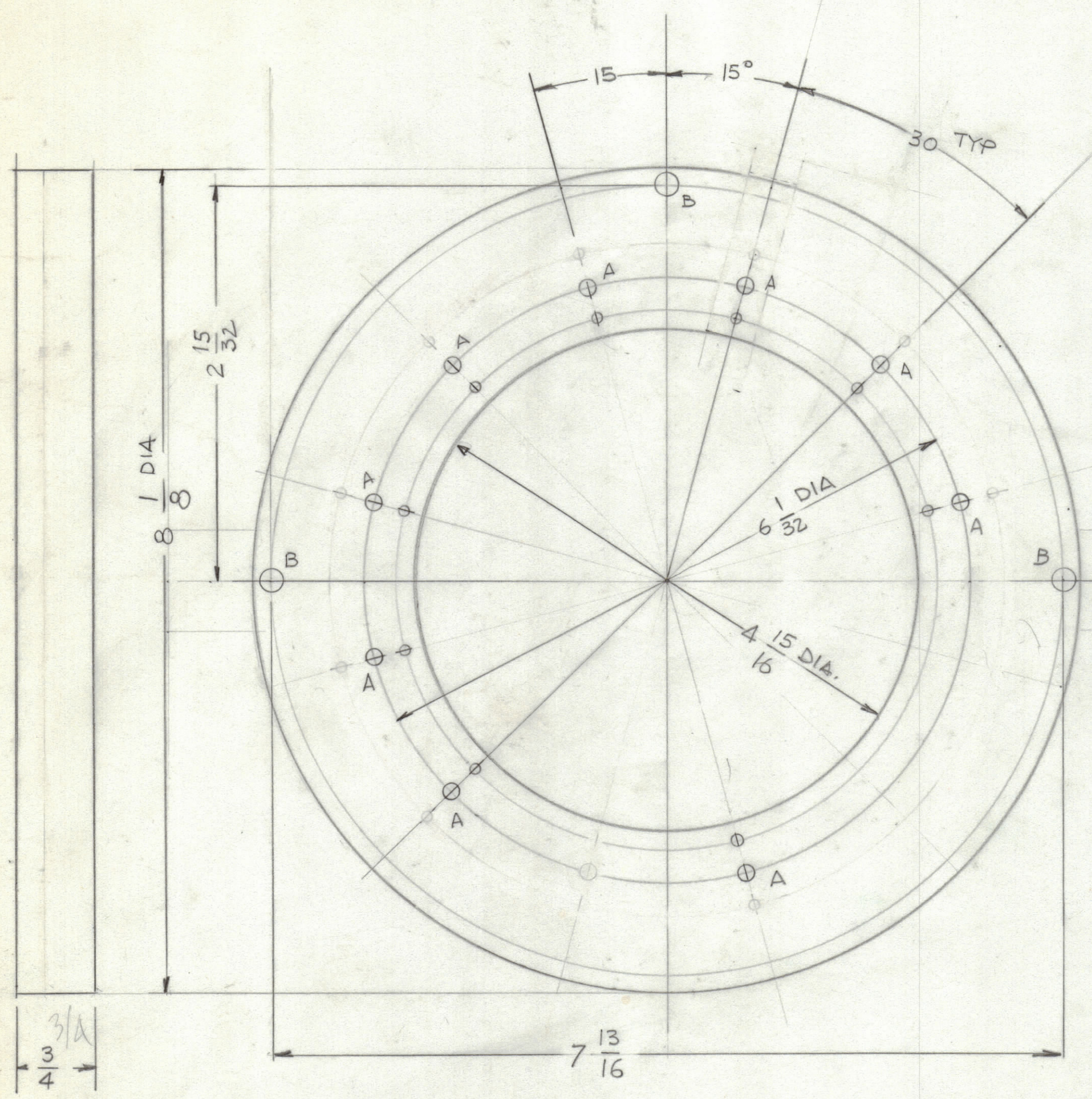
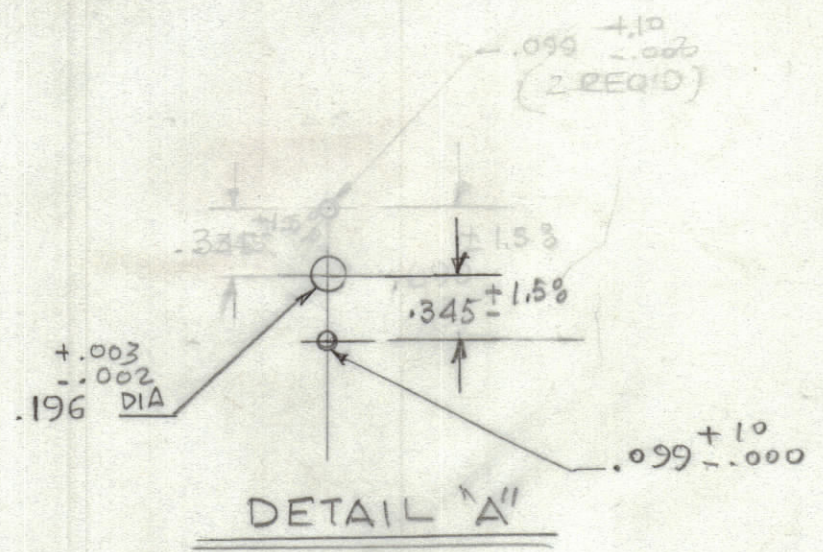


REVISIONS							
ZONE	LTR	DESCRIPTION	DATE	E.M.N.NO	DRAFT	CHKD	APPD



HOLES

A -	SEE DETAIL	9 REQ'D
B -	13/64	3 REQ'D



QTY. REQ.	ITEM	PART NO.	DESCRIPTION	SYMBOL
LIST OF MATERIAL				
<b>THE TECHNICAL MATERIEL CORP.</b> MAMARONECK, NEW YORK  <b>WAFER CONTACT</b> <b>MTG.</b>				
FINAL APPROVAL: <i>[Signature]</i> DATE: 3/27/85 MECH. DES: <i>[Signature]</i> DATE: 3/27/85 ELECT. DES: DATE:			SIZE: C CODE IDENT. NO.: 82679 DWG. NO.: PX 1296 ISSUE: <i>[Symbol]</i>	
CHECKED: DATE: DRAWN: G.D.L. DATE: 3-27-85			SHEET: 1 OF	

UNLESS OTHERWISE SPECIFIED DIMENSIONS ARE IN INCHES AND INCLUDE CHEMICALLY APPLIED OR PLATED FINISHES

**TOLERANCES ON**

DECIMALS	FRACTIONS
.X ± .05	± 1/64
.XX ± .01	ANGLES
.XXX ± .005	± 0° -30'

MATERIAL: .750 THICK MYCALEX, SUPERAMICA 500  
 FINISH: NATURAL

QTY / UNIT	STANDARD MODEL USED ON	ASS'Y NO.
APPLICATION		
	CODE	

**NOTICE TO PERSONS RECEIVING THIS DRAWING**  
 THE TECHNICAL MATERIEL CORPORATION claims proprietary right in the material disclosed hereon. This drawing is issued in confidence for engineering information only and may not be reproduced or used to manufacture anything shown hereon without permission from THE TECHNICAL MATERIEL CORPORATION to the user. This drawing is loaned for mutual assistance and is subject to recall at any time.