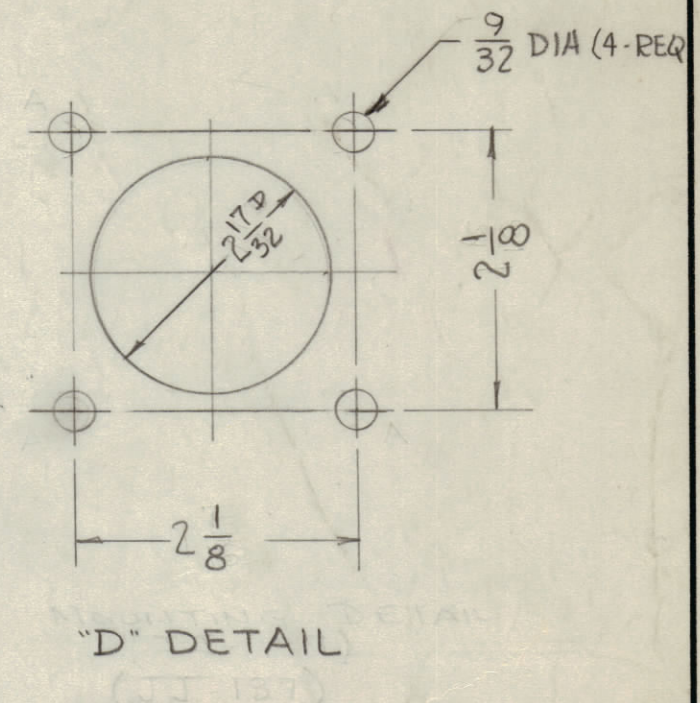
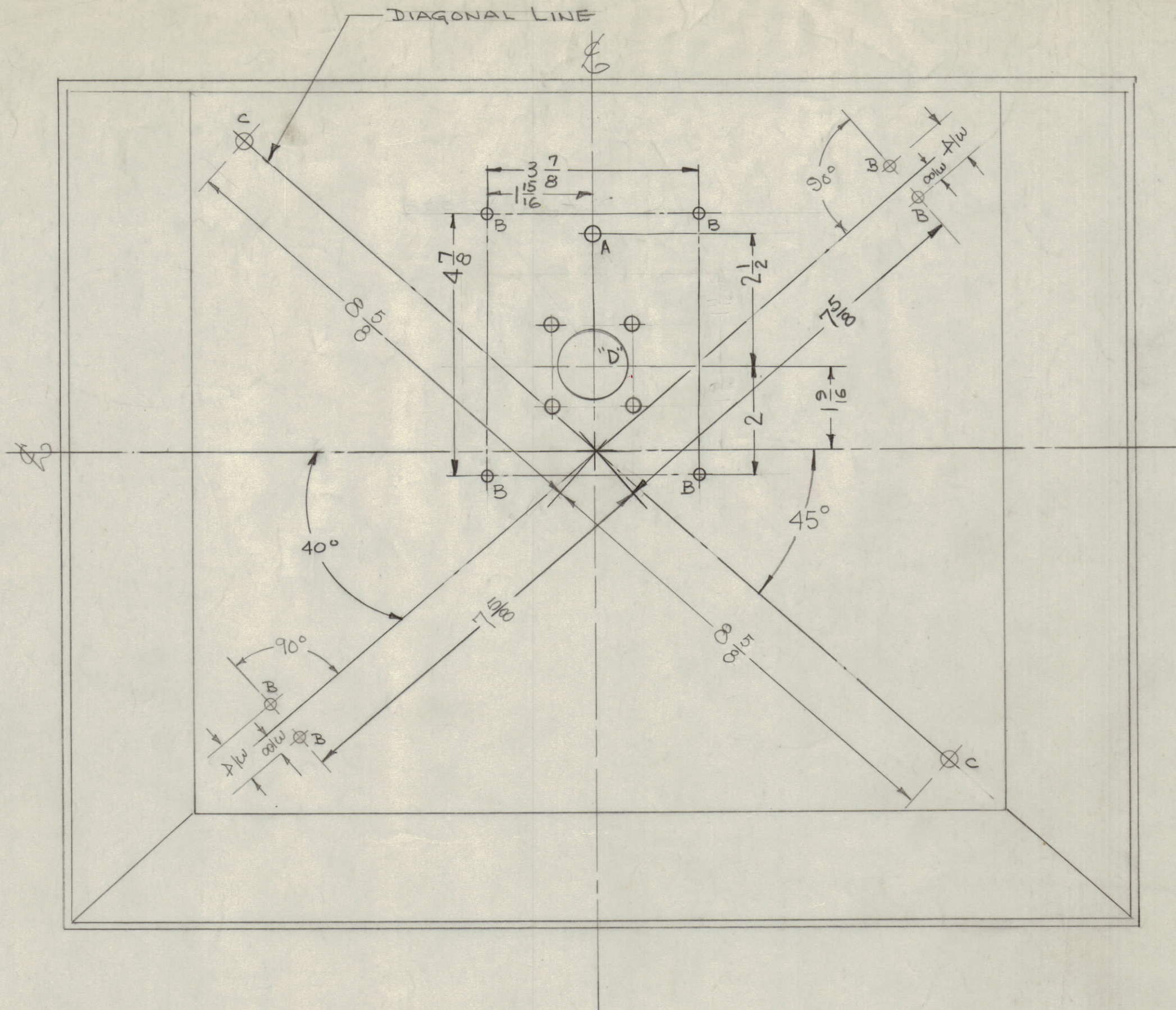
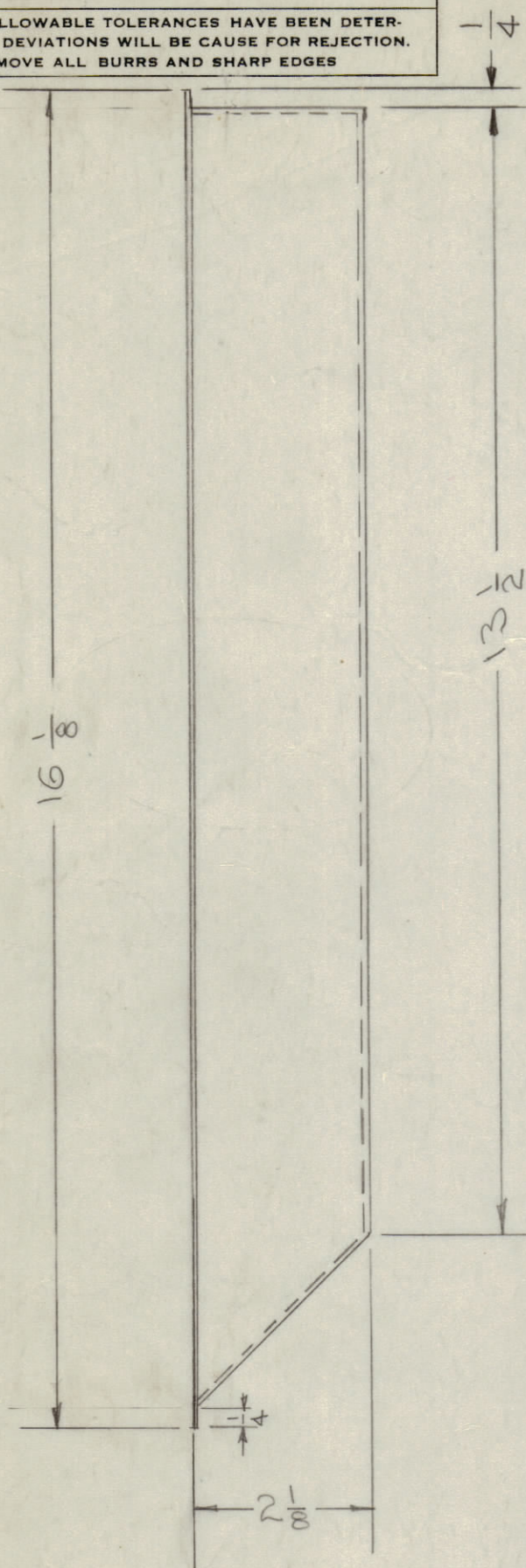


IF IT IS FOUND DESIRABLE TO CHANGE ANY TOLERANCE OR OTHER DETAIL SPECIFIED ON THIS DRAWING NOTIFY THE PURCHASER PROMPTLY.

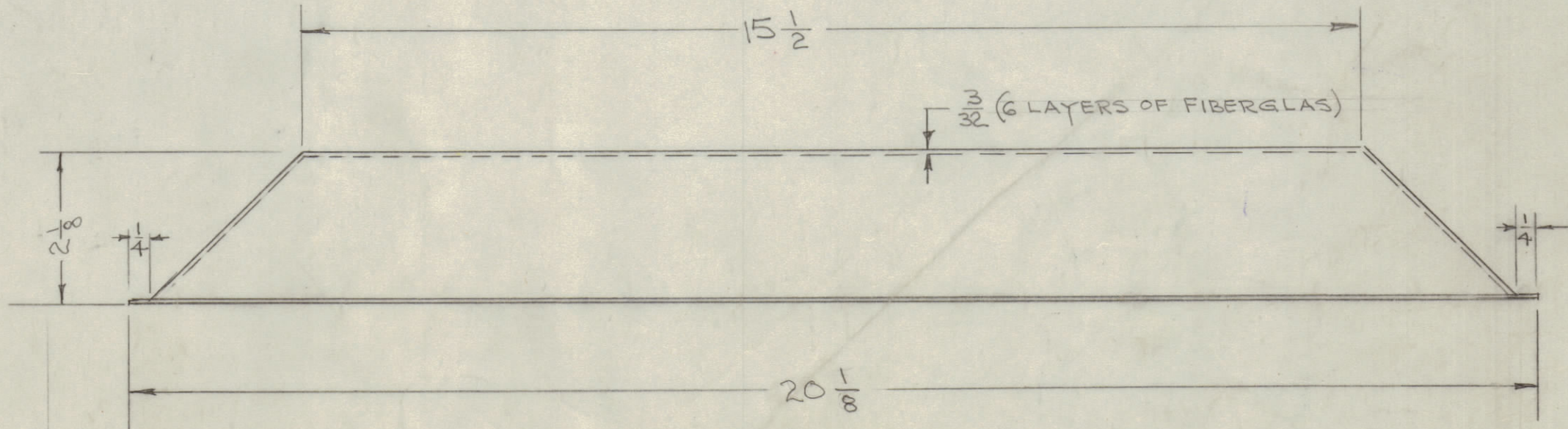
MAXIMUM ALLOWABLE TOLERANCES HAVE BEEN DETERMINED AND DEVIATIONS WILL BE CAUSE FOR REJECTION. REMOVE ALL BURRS AND SHARP EDGES



PX-386 B

A - 9/32 D.
 B - 13/64 D.
 C - 1/4 D.
 D - SEE DETAIL

1 HOLES
 8 HOLES
 2 HOLES
 1-REQ.



B	8 5/8 WAS 8 1/2 45° ADDED	6.6.66	16339	WH	JCS	DB	
A	5 CLARIFY USED ON INFO						
	4 B HOLE QUAN WAS 4 B HOLE WAS 3/16 D	10/5/63	8143	16	16	MSB	
	3 ON DETAIL, 2 1/32 WAS 1/4, 2 1/8 WAS 1 7/16						
	2 2 1/2 WAS 1 1/16						
1	(4) "B" HOLES ADDED						
ISSUE	ITEM	CHANGED FROM	DATE	CN. NO.	DRAFTS	CHECKER	ENG. APP.
TOLERANCES		SCALE: 1/16" = 1"					
ALL OTHERS	DEC. DIM. ± 1/64 FRAC. DIM. ± 1/64 ANGULAR DIM. ±		DRILL, PUNCH, COMMERCIAL STOCK SIZES AND MANUFACTURERS TOLERANCES ARE NOT INCLUDED.				

1	TER-500-7DU	A-1475-1	10/18/57	
1	TER-3500-7DU	A-1475-2	10/18/57	
REQ PER UNIT	MODEL	PROJECT NO.	ASS'Y. NO.	DATE
USED ON				

REQ. ITEM	PART NO.	DESCRIPTION	SYMBOL
THE TECHNICAL MATERIEL CORP. MAMARONECK, NEW YORK			
STOCK SIZE		FIBERGLAS	
MATERIAL		WEIGHT PER PC.	
TYPE & TEMPER			
HEAT TREAT. SPEC.		FINISH & SPEC. NO.	
DRAWN		ELEC. DES. APP.	
CHECKED		MECH. DES. APP.	
		FINAL APPROVAL	
		PX-386 B	