

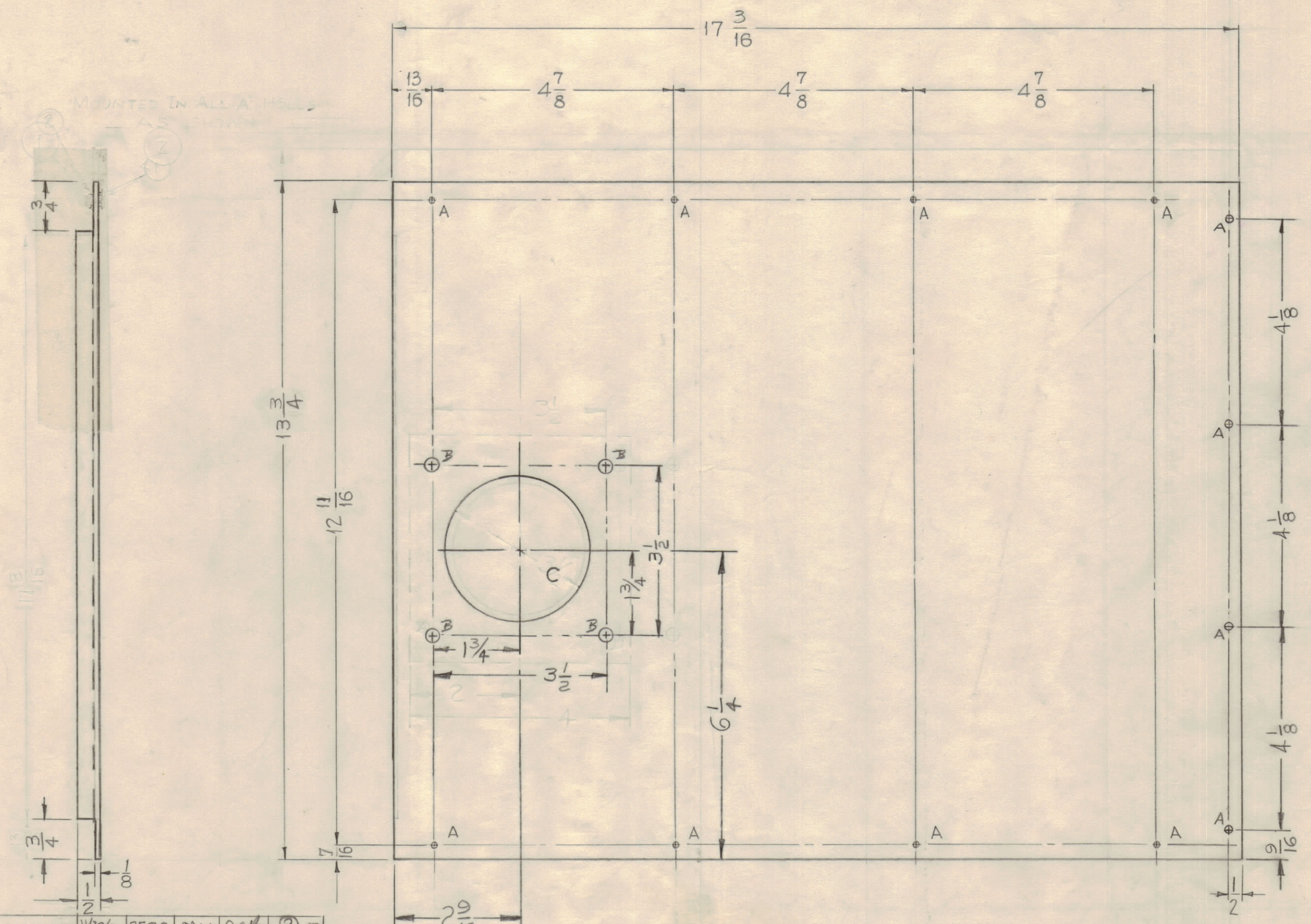
NOTICE TO PERSONS RECEIVING THIS DRAWING

THE TECHNICAL MATERIEL CORPORATION claims proprietary right in the material disclosed hereon. This drawing is issued in confidence for engineering information only and may not be reproduced or used to manufacture anything shown hereon without permission from THE TECHNICAL MATERIEL CORPORATION to the user. This drawing is loaned for mutual assistance and is subject to recall at any time.

Property of:
 THE TECHNICAL MATERIEL CORPORATION
 MAMARONECK, NEW YORK

A ~ 1/4 DIA. 12 REQ.
 B ~ 1/64 DIA. 4 REQ.
 C ~ 3 1/2 DIA. 1 REQ.

MOUNTED IN ALL A HOLES



E	C2	DIM. 1/2 ADDED	11/29/60	3588	DM	JCB	23
	C5,D5	DIM. 7/16 WAS 5/16; 12 11/16 WAS 12 3/16					
D		BUILDUP DELETED DELETED FS - MOUNTING NOTE	11/1/60	3338	DM	JCB	23
C	F6	ITEMS 1 & 2 ADDED	10/14/60	3189	DM	JCB	23
B	E5	DIM. 13 3/4 WAS 13 7/16	9/22/60	3026	RE	JCB	23
	B2	FIBERGLASS WAS HOMALITE					
	B2	3/32 8PLY WAS 1/8					
	D5/C6	1" HOLE ADDED / DIM 3/4 ADDED PLACES					
	B/B	4" HOLES ADDED / 4" HOLES ADDED					
	D4	1/8" HOMALITE 101 WAS FIBERGLASS 8PLY 3/32	8/4/60	69	RE	JCB	23
	D5	14 3/8" WAS 13 7/16" CHNG DIM.					
	F6	DELETE ITEMS 1 AND 2					
	D6	DELETE 11 3/8" x 1/2" LIP					

ISSUE	ZONE	DESCRIPTION	DATE	CH. NO.	DRAFTS	CHECKER	ENG. APP.
TOLERANCES		SCALE: 1/2" = DO NOT SCALE					
DEC. DIM. ±		MAXIMUM ALLOWABLE TOLERANCES HAVE BEEN DETERMINED AND ANY DEVIATIONS WILL BE CAUSE FOR REJECTION.					
FRAC. DIM. ± 1/64		REMOVE ALL BURRS AND SHARP EDGES					
ANGULAR DIM. ±							

REF. PX-593

REQ. ITEM	PART NO.	DESCRIPTION	SYMBOL
3/32	8PLY	THE TECHNICAL MATERIEL CORP. MAMARONECK, NEW YORK	
STOCK SIZE		COVER, REAR	
FIBERGLASS MATERIAL		FLUE, FINAL TUBE	
TYPE & TEMPER		John C. Biele	
HEAT TREAT. SPEC.		DRAWN	ELEC. DES. APP.
FINISH & SPEC. NO.		CHECKED	MECH. DES. APP.
		FINAL APPROVAL	
		PX-569 E	

1	GPT-40K	AX-209	7-5-60
REQ PER UNIT	MODEL	SECTION	ASSY. NO.

TUBING