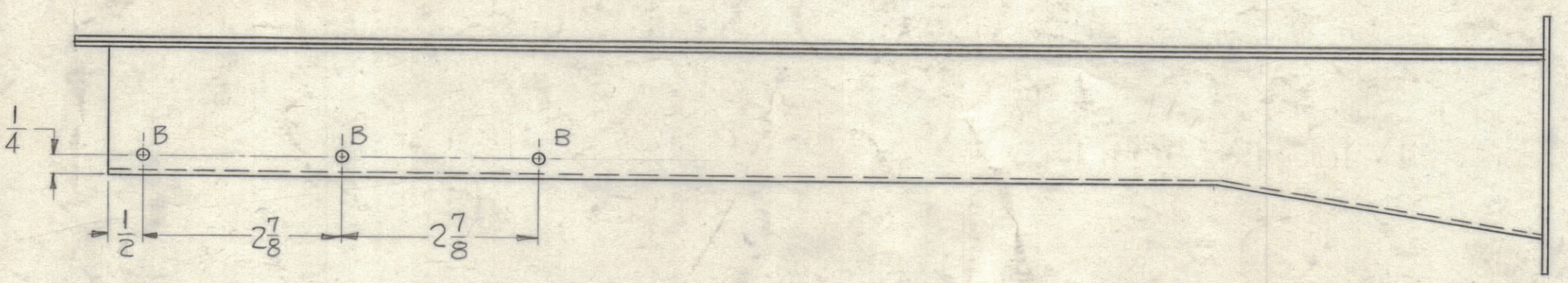
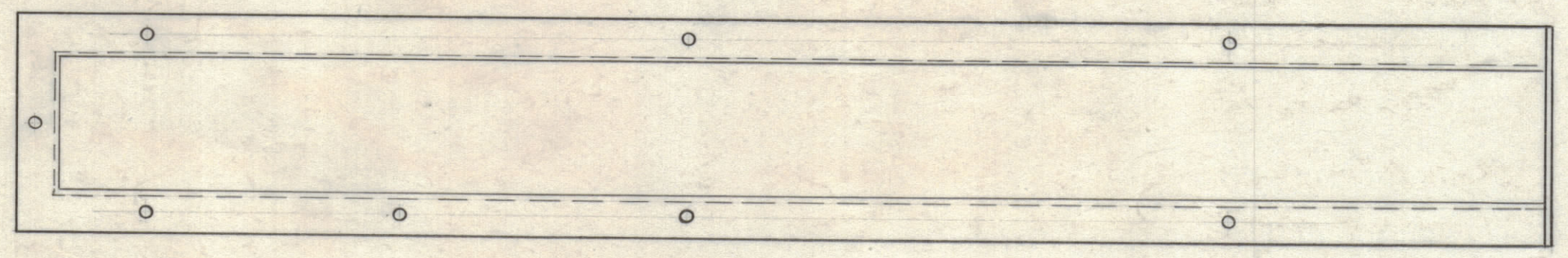
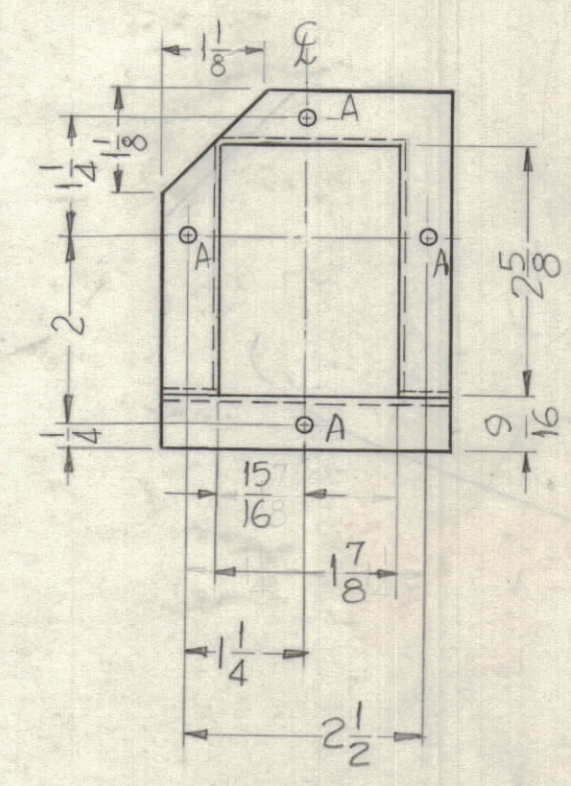
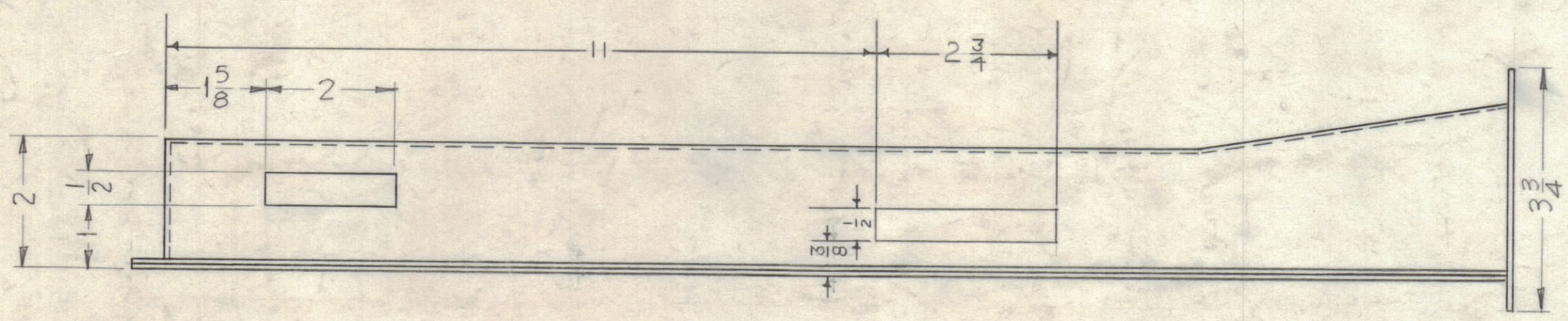


HOLES REQ
 A ~ 9/64 DIA. 11
 B ~ #28 DR. (.140 DIA.) 5



NOTICE TO PERSONS RECEIVING THIS DRAWING
 THE TECHNICAL MATERIEL CORPORATION claims proprietary right in the material disclosed hereon. This drawing is issued in confidence for engineering information only and may not be reproduced or used to manufacture anything shown hereon without permission from THE TECHNICAL MATERIEL CORPORATION to the user. This drawing is loaned for your assistance and is subject to recall at any time.
 Property of:
 THE TECHNICAL MATERIEL CORPORATION
 MAMARONECK, NEW YORK

REF ~ PX-611(4)

SYM	ZONE	DESCRIPTION	DATE	CH. NO.	DRAFTS	CHECKER	ENG. APP.
C	H6-7	2-11/2X1/2 SLOTS WERE 1-4X1/2 SLOT	9/14/61	5567	EH	WBS	DB
B	FB	23/4X1/2 SLOT ADDED	7/28/61	5262	WBS	WBS	DB
		Revised & REDRAWN					

UNLESS OTHERWISE SPECIFIED:
 DIMENSIONS ARE IN INCHES
 TOLERANCES ON
 FRACTIONS ± 1/64 DECIMALS ± .005 ANGLES ± 1/2°
 MAXIMUM ALLOWABLE TOLERANCES HAVE BEEN DETERMINED AND ANY DEVIATIONS WILL BE CAUSE FOR REJECTION. REMOVE ALL BURRS & SHARP EDGES

REQ. PER UNIT	MODEL	SECTION	ASS'Y. NO.	DATE
1	GPT-40K	AX-244		7-28-61

REQ. ITEM	PART NO.	DESCRIPTION	SYMBOL
	1/16"	THE TECHNICAL MATERIEL CORP.	
	STOCK SIZE	MAMARONECK, NEW YORK	
	FIBERGLASS	DUCT, P.A.	
	MATERIAL		
		DRAWN	DB
		CHECKED	
		FINAL APPROVAL	
		PX-598	C
		SHEET OF	
		ELEC. DES. APP.	
		MECH. DES. APP.	