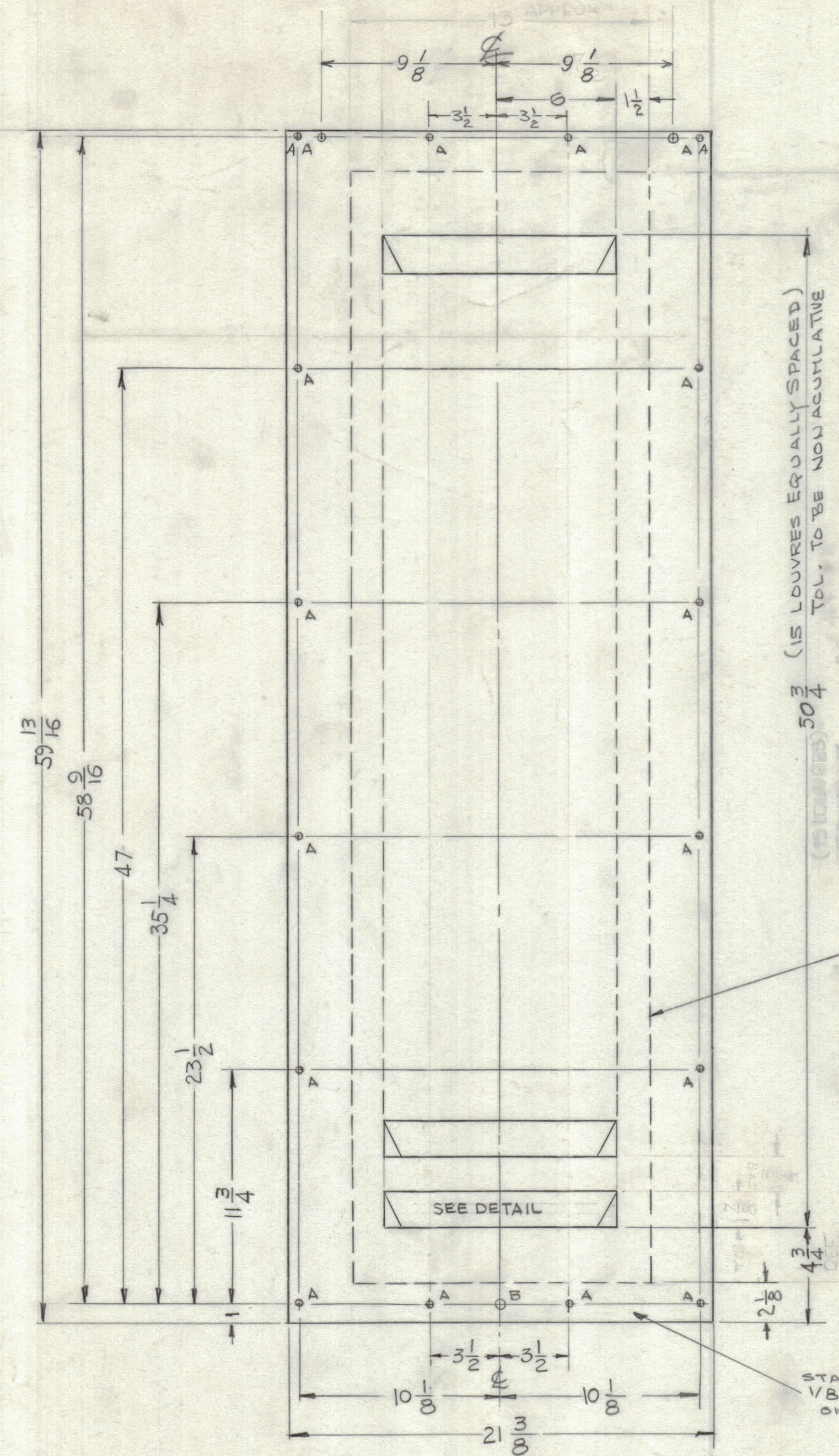


| REVISIONS |     |                                  |         |            |       |      |      |
|-----------|-----|----------------------------------|---------|------------|-------|------|------|
| ZONE      | SYM | DESCRIPTION                      | DATE    | E.M.N. NO. | DRAFT | CHKD | APPD |
| #         | A   | ADDED 2 "A" HOLES & CHANGED DIA. | 2-20-64 | 10916      | AM.   | AM.  | AM.  |

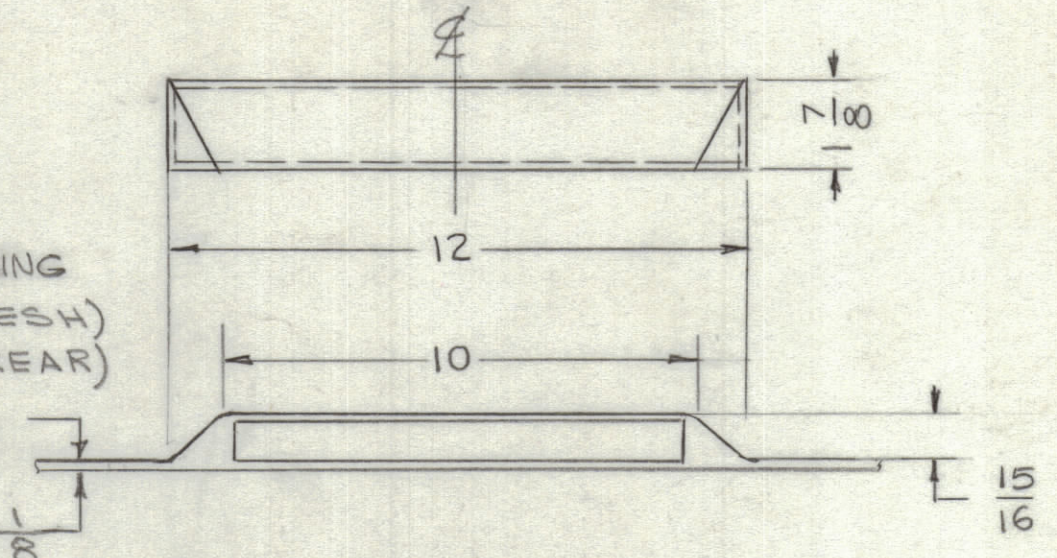


(15 LOUVRES EQUALLY SPACED)  
 TOL. TO BE NONACCUMULATIVE  
 50 3/4

| HOLE | DESCRIPTION | REQ'D |
|------|-------------|-------|
| A    | 1/4 DIA.    | 18    |
| B    | 9/32 DIA    | 1     |

FIBERGLASS SCREENING  
 15 X 56 (16 MESH)  
 (MOUNTED ON REAR  
 OF PANEL)

PANEL  
 THICKNESS 1/8



LOUVRE DETAIL  
 (15 Req.)

STAMP THE PART No,  
 1/8 HIGH BLACK GOTHIC.  
 ON INSIDE OF PANEL

NOTES

|   |               |        |
|---|---------------|--------|
| QTY./UNIT   | TEP 5000-300U | A-3130 |
| SCALE   | 3/16 = 1"     |        |
| THE CONTENTS OF THIS DRAWING ARE THE EXCLUSIVE PROPERTY OF THE TECHNICAL MATERIEL CORP. ITS UNAUTHORIZED USE OR REPRODUCTION IN WHOLE OR IN PART IS STRICTLY FORBIDDEN. |               |        |

| REQ'D.  | ITEM | PART NUMBER  | DESCRIPTION | SYMBOL         |
|---|------|--|-------------|----------------|
| LIST OF MATERIAL  |      |  |             |                |
| MATERIAL  |      | THE TECHNICAL MATERIEL CORP.<br>MAMARONECK, NEW YORK |             |                |
| FINISH  |      | TITLE  |             |                |
| S-756 GRAY SYNTHETIC ENAMEL   |      | PANEL, REAR  |             |                |
| UNLESS OTHERWISE SPECIFIED DIMENSIONS ARE IN INCHES AND INCLUDE CHEMICALLY APPLIED OR PLATED FINISHES |      | DRAWN  | DATE        | FINAL APPROVAL |
|   |      | G.D.L.   | 3-19-64     |                |
|   |      | CHECKED  | DATE        |                |
|   |      | aa   |             |                |
| DECIMALS  |      | ELECT. DES.  |             | DATE           |
| .X ± .05  |      | MECH. DES.   |             | DATE           |
| .XX ± .01   |      |  |             |                |
| .XXX ± .005   |      |  |             |                |
| TOLERANCES  |      | ANGLES   |             |                |
| ± 1/64  |      | ± 0° 30'   |             |                |
|   |      | SHEET  |             | REV. LTR.      |
|   |      | PX-696   |             | A              |

PX-696  
 A