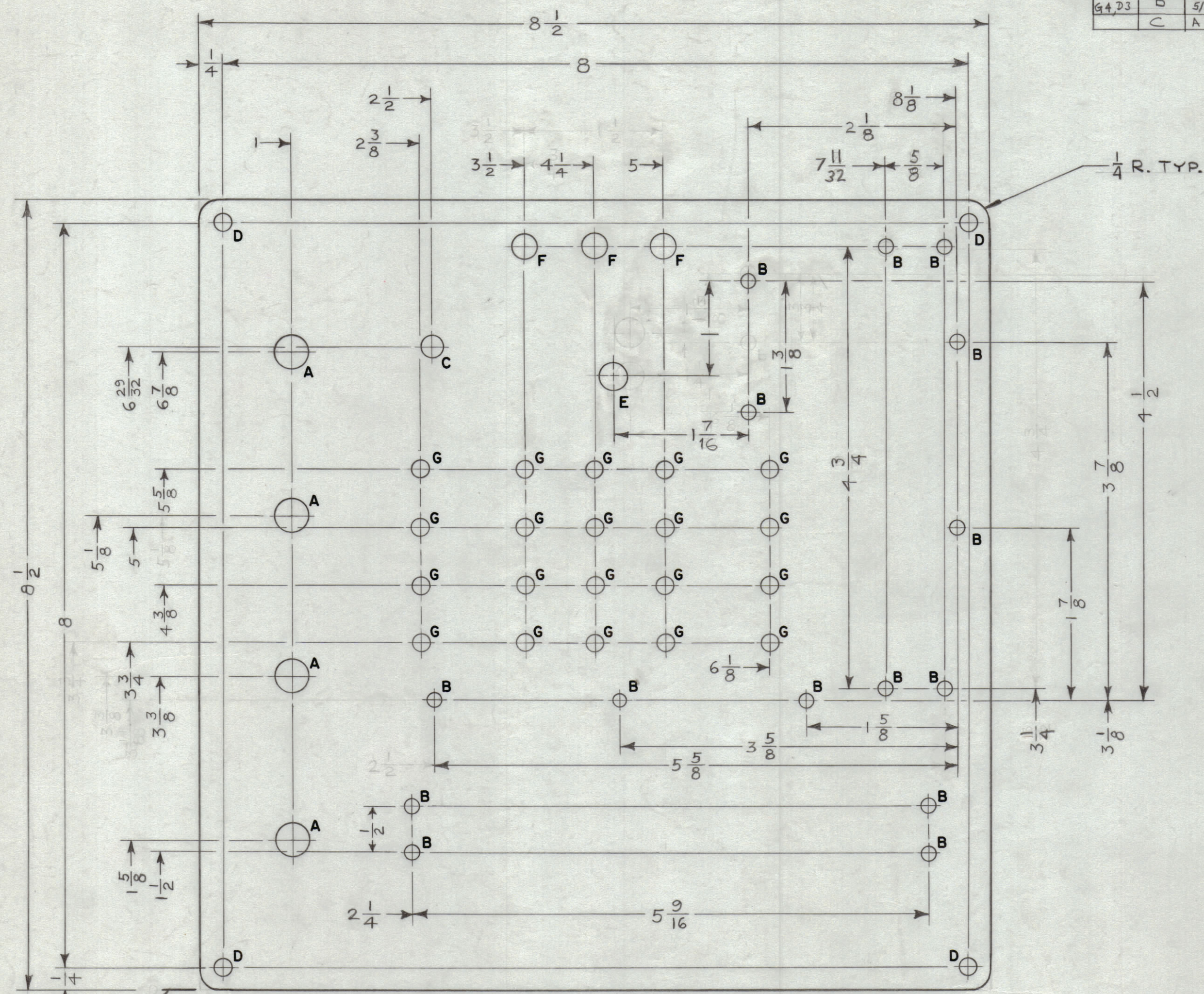
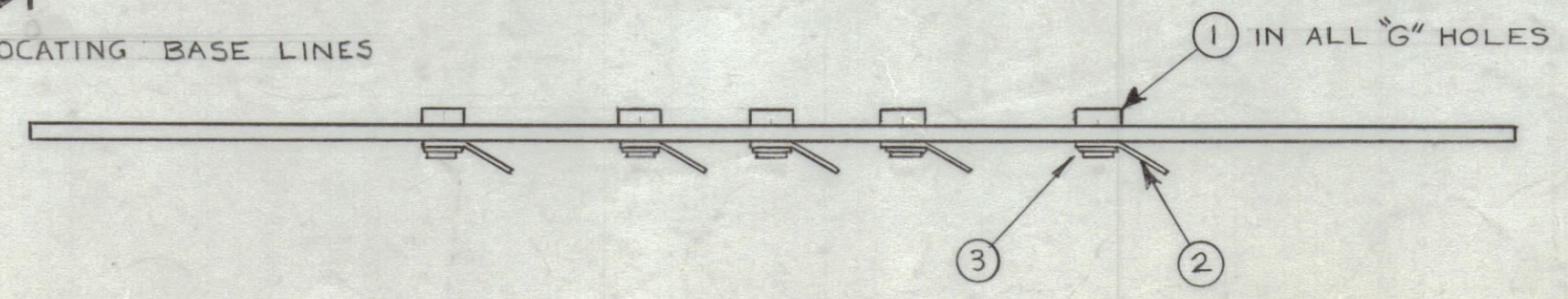


REVISIONS						
ZONE	SYM	DESCRIPTION	DATE	E.M.N. NO.	DRAFT	CHKD APPD
	X	EXPERIMENTAL RELEASE	8-12-64		N.P.	
	X1	ITEM 3 ADDED, MTL THICKNESS WAS 1/8, DIM 1 7/16 WAS 1-11/32	9-17-64		SRG	
	Ø	ORIGINAL RELEASE FOR PRODUCTION	9-18-64	Ø	FL	
	A	ADDED 1/4 R. TYP. ON HOLE LEGEND 33/64 WAS 25/64, 3/8 WAS 5/16	12-16-64	13134	HLA	(a)
E4, G4 G4, D3	B	DIM. 4 3/4 WAS 4-19/32; 7-11/32 WAS 7-3/8; 5/8 WAS 19/32; 3-1/4 WAS 3-13/32.	3-22-65	13736	FL	(b)
	C	A HOLES WERE 33/64 DIA.	10-3-66	16957	HLA	(c)



HOLE LEGEND		
HOLE	DESCRIPTION	REQ'D
A	13/32 DIA	4
B	5/32 DIA	15
C	13/64 DIA	1
D	3/16 DIA	4
E	3/8 DIA	1
F	17/64 DIA	3
G	#12 DR (-.189)	20

LOCATING BASE LINES



NOTE:  
1. PANEL MUST BE FREE OF ALL MACHINING MARKS, GOUGES & SCRATCHES.

REF: LD1590

REQ'D.	ITEM	PART NUMBER	DESCRIPTION	SYMBOL
20	3	FWIOLBN	WASHER, FLAT	G
20	2	TE104-4	TERMINAL, LOCKING	G
20	1	TE108-4	STAND-OFF, RIVET TYPE	G

A - DUDDLES				LIST OF MATERIAL			
MATERIAL				THE TECHNICAL MATERIEL CORP.			
G-11 EPOXY GLASS LAMINATE 3/32 THICK				MAMARONECK, NEW YORK			
FINISH				TITLE			
//				PANEL, FRONT			
UNLESS OTHERWISE SPECIFIED DIMENSIONS ARE IN INCHES AND INCLUDE CHEMICALLY APPLIED OR PLATED FINISHES		DRAWN		DATE		FINAL APPROVAL	
		N. Peters		8-12-64		[Signature]	
		CHECKED		DATE			
		[Signature]		9-17-64			
DECIMALS .X ± .05 .XX ± .01 .XXX ± .005		FRACTIONS ± 1/64 ANGLES ± 0° 30'		ELECT. DES.		DATE	
TOLERANCES				MECH. DES.		DATE	
				[Signature]		PX 847	
				SHEET			
				REV. LTR.			
				C			

NOTES		
QTY./UNIT	MODEL USED ON	ASS'Y. NO.
SCALE	CODE	
1:1	A	
THE CONTENTS OF THIS DRAWING ARE THE EXCLUSIVE PROPERTY OF THE TECHNICAL MATERIEL CORP. ITS UNAUTHORIZED USE OR REPRODUCTION IN WHOLE OR IN PART IS STRICTLY FORBIDDEN.		

PX 847 C