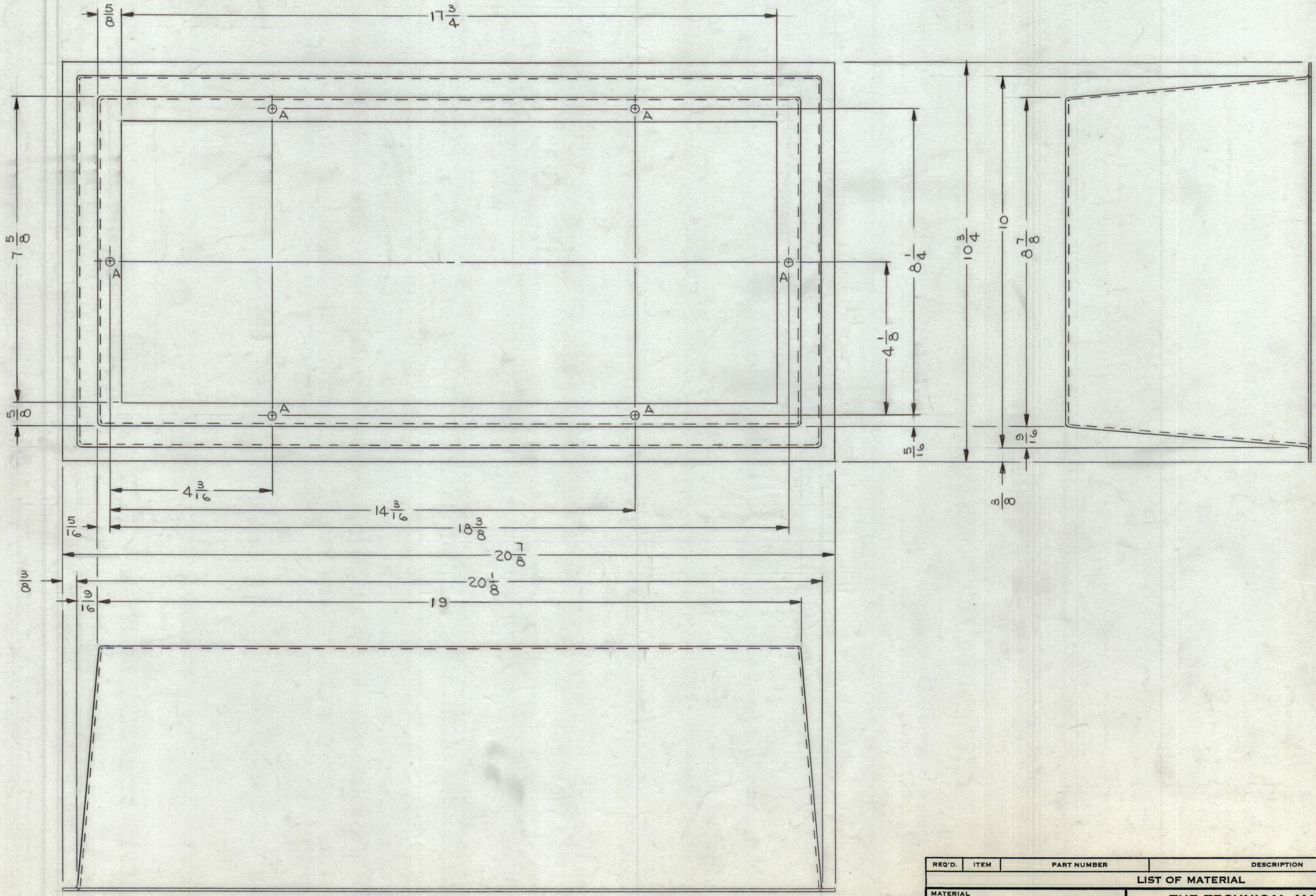


HOLE LEGEND		
HOLE	DESCRIPTION	REQ'D
A	11/64 DIA	6

REVISIONS						
ZONE	SYM	DESCRIPTION	DATE	E.M.N. NO.	DRAFT	CHKD
X		EXP. RELEASE	2/8/65		JL	
Ø		ORIGINAL RELEASE FOR PRODUCTION	6/17/66	Ø	CV	<i>foe</i>



PROCESSING -
BAKE IN VACUUM, 300°F - 90 MIN.
FINISHING -
PAINT TMC GRAY, BAKE 225°F - 20 MIN.

NOTES

1	GPT-10KLF	
Q'TY./UNIT	MODEL USED ON	ASS'Y. NO.
SCALE 1/2	CODE	

THE CONTENTS OF THIS DRAWING ARE THE EXCLUSIVE PROPERTY OF THE TECHNICAL MATERIEL CORP. ITS UNAUTHORIZED USE OR REPRODUCTION IN WHOLE OR IN PART IS STRICTLY FORBIDDEN.

REQ'D.	ITEM	PART NUMBER	DESCRIPTION	SYMBOL
LIST OF MATERIAL				
MATERIAL		THE TECHNICAL MATERIEL CORP.		
83-VP, 3PLY STRAND REG.		MAMARONECK, NEW YORK		
PREIMPRAGNET (POLYESTER) FG		TITLE		
FINISH		FLUE, AIR		
SEE NOTES				
UNLESS OTHERWISE SPECIFIED DIMENSIONS ARE IN INCHES AND INCLUDE CHEMICALLY APPLIED OR PLATED FINISHES		DRAWN J. LESHINSKI DATE 2/8/65		
DECIMALS .X ± .05		CHECKED <i>JLB</i> DATE 6-24-65		
.XX ± .01		ELECT. DES.		
.XXX ± .005		MECH. DES.		
TOLERANCES		DATE		
FRACTIONS ± 1/64		DATE		
ANGLES ± 0° 30'		DATE		
		SHEET		
		REV. LTR.		

PX 885