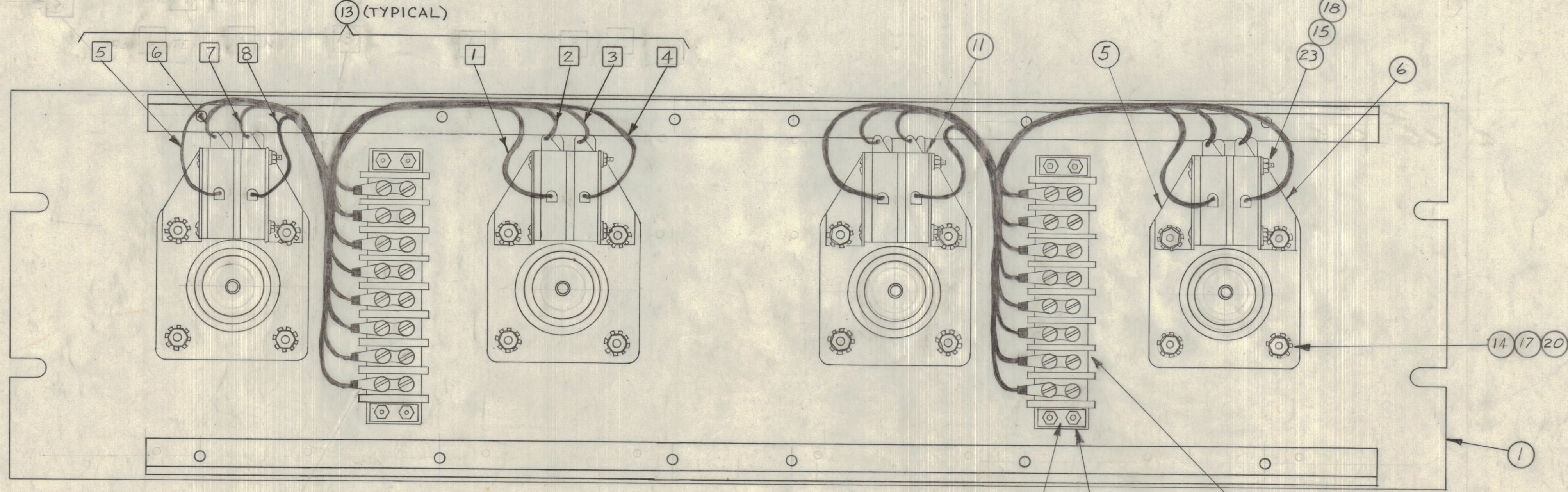
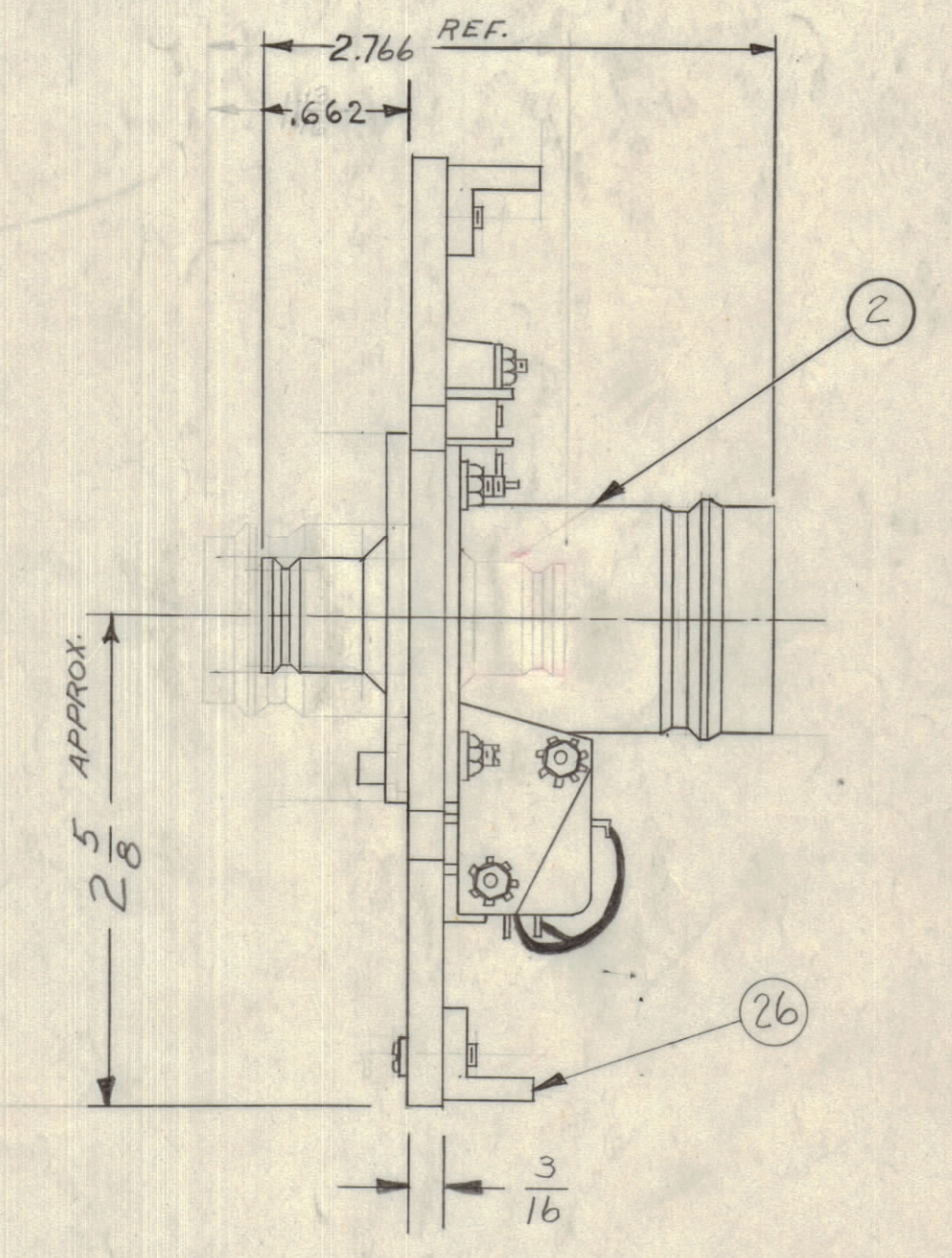
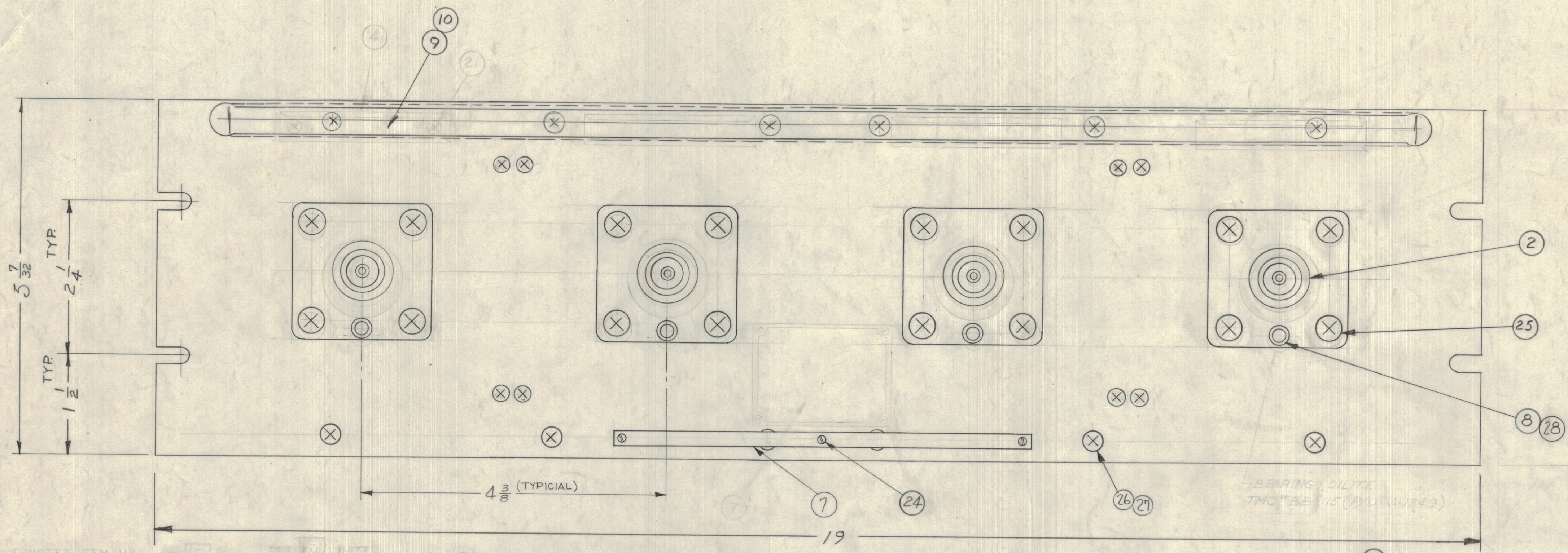


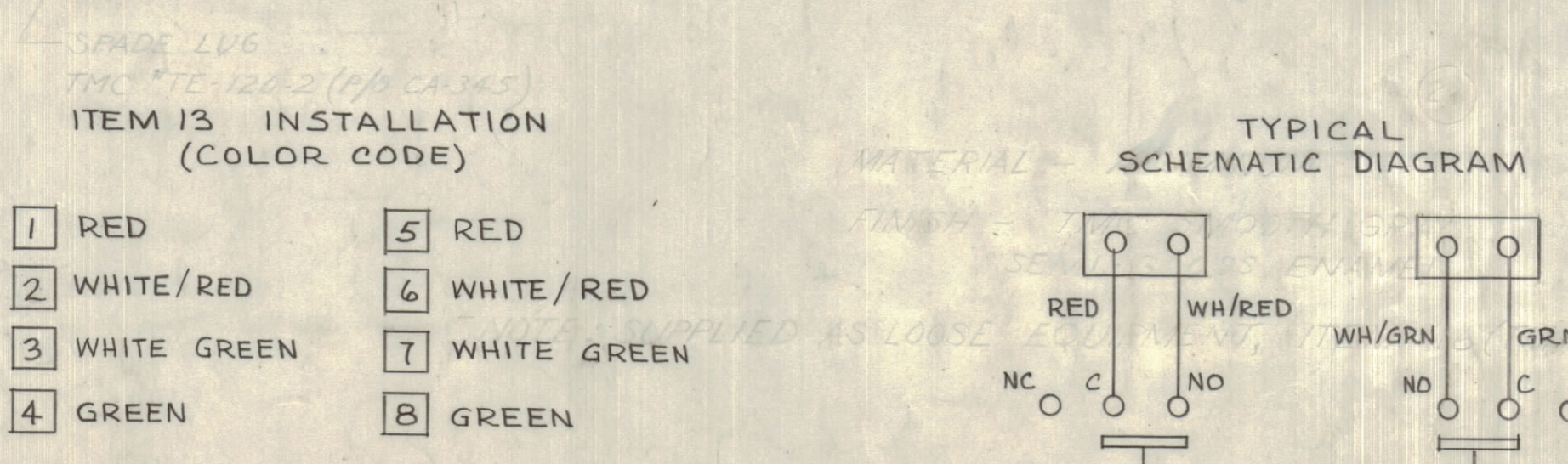
NOTICE TO PERSONS RECEIVING THIS DRAWING

THE TECHNICAL MATERIEL CORPORATION claims proprietary right in the material disclosed herein. This drawing is issued in confidence for engineering information only and may not be reproduced or used to manufacture anything shown hereon without permission from THE TECHNICAL MATERIEL CORPORATION to the user. This drawing is loaned for mutual assistance and is subject to recall at any time.

Property of:
THE TECHNICAL MATERIEL CORPORATION
MAMARONECK, NEW YORK



QTY	ITEM	PART NO.	DESCRIPTION
X	29	S-716	TEST PROCEDURE
4	28	BB-115	BEARING, OILITE (P/O A-1349)
12	27	SCFP0632BNS	SCREW, MACHINE
2	26	PM-490	BRACE, PANEL
16	25	SCFP032BNB	SCREW, MACHINE
3	24	SFB0256SN3	SCREW, THREAD CUTTING
8	23	SCBP0440BN16	SCREW, MACHINE
8	22	SCFP0440BN10	SCREW, MACHINE
	21		
16	20	NTH1032BN10	NUT, HEX
8	19	NTH0440BNB	NUT, HEX
8	18	NTH0440BNG	NUT, HEX
16	17	LWE10 MRN	LOCKWASHER, EXTERNAL
2	16	TM-105-8-AR	FANNING STRIP (LOOSE ITEM)
16	15	LWE04MRN	LOCKWASHER, EXTERNAL
16	14	SCFP032BNS	SCREW, MACHINE
2	13	CA-345	CABLE ASSEMBLY
2	12	TM-102-8	TERMINAL SWITCH, BARRIER TYPE
8	11	SW-189	SWITCH, MICRO, PUSH
4	10	PX-250	FREQUENCY TAB
4	9	PX-249	GUARD, FREQ. TAB
4	8	PM-427-1	PLUNGER, SWITCH
1	7	NP-250	NAMEPLATE
4	6	MS-987	BRACKET, SWITCH, RIGHT
4	5	MS-986	BRACKET, SWITCH, LEFT
	4		
4	3	MS-154-1	STRADDLE PLATE
4	2	JJ-139	ADAPTER, CONNECTOR
1	1	A-1349-2	FRONT PANEL-SUB-ASSY.



NOTE: ITEM 16 SUPPLIED AS LOOSE ITEM.

SYMBOL	ZONE	DESCRIPTION	DATE	CH. NO.	DRAFTS	CHECKER	ENG. APP.
A		ITEM 4 MS576-2 ITEM 21 0340 TND SCREW MACHINE DELETED - PICTORIAL UPDATED	4-8-64	22050	GDL		
B		REVERSED 11-139 CONNECTOR FOR CORRECT PICTORIAL REPRESENTATION	11-21-62	7626	MJT		
C		CA ADDED TYP. SCHEM. DIAG.					
		CA ADDED FROM 101-1 HAS A-1349-1					
		ADDED DIM. 1 1/2					
		ITEM (10) WAS 1REQ.					
		C2 ITEM (24) WAS SCBP0256SN3 4 REQ.					
		C2, B2 ITEM (23) WAS SCBP0440BN16 (1) WAS NP-102-10					
		ITEM (10) (2) ADDED ITEM (20) WAS SCBP0440BN16					
		MS, BA 4 1/2 DIM. ADDED 11-21-62 (10-22-345) DELETED FROM NOTE					

TOLERANCES ON FRACTIONS ± 1/64 DECIMALS ± .005 ANGLES ± 1/2°

MAXIMUM ALLOWABLE TOLERANCES HAVE BEEN DETERMINED AND ANY DEVIATIONS WILL BE CAUSE FOR REJECTION. REMOVE ALL BURRS & SHARP EDGES

QDP-2C154 C

A

REQ. PER UNIT	MODEL	SECTION	ASSY. NO.	DATE	FINISH & SPEC. NO.	ELEC. DES. APP.	MECH. DES. APP.	SHEET	OF
	QDP-2C154			1-27-62				QDP-2C154	C