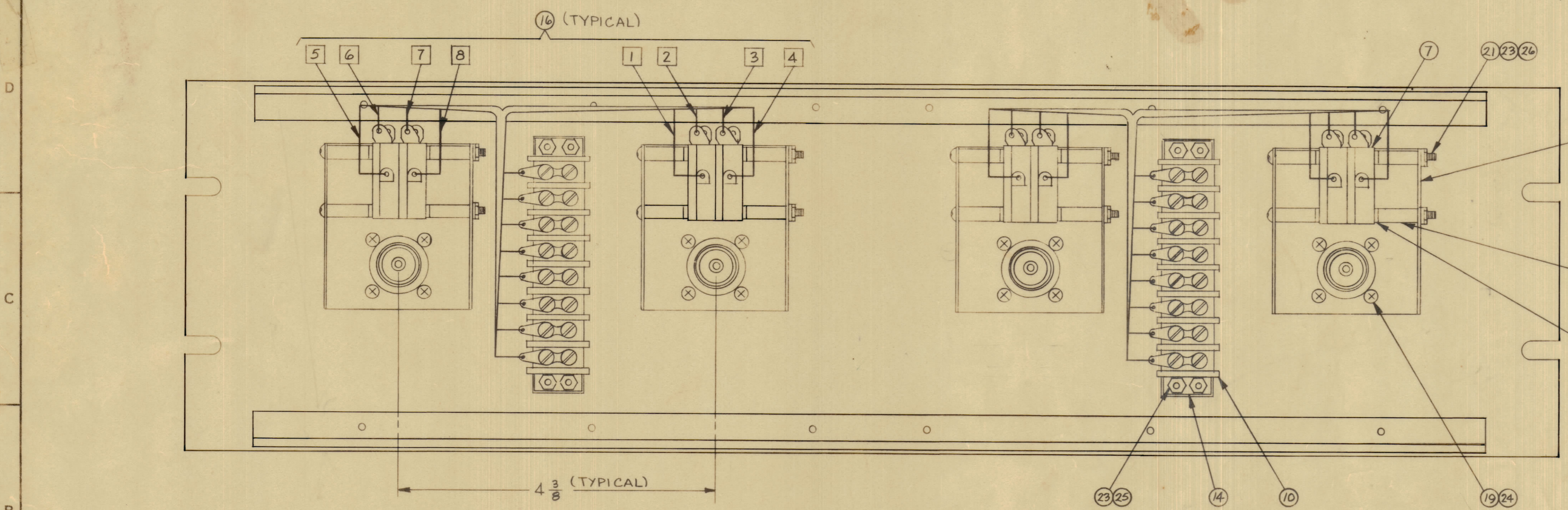
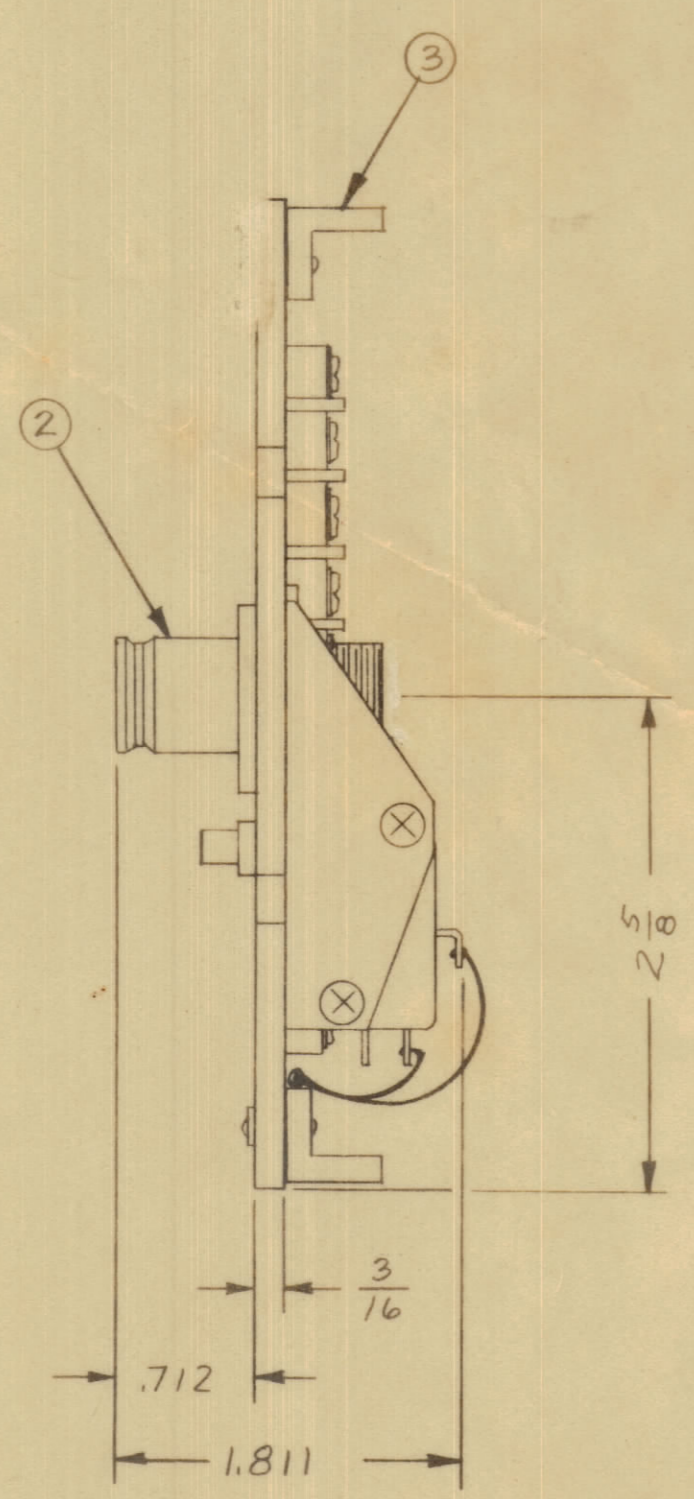
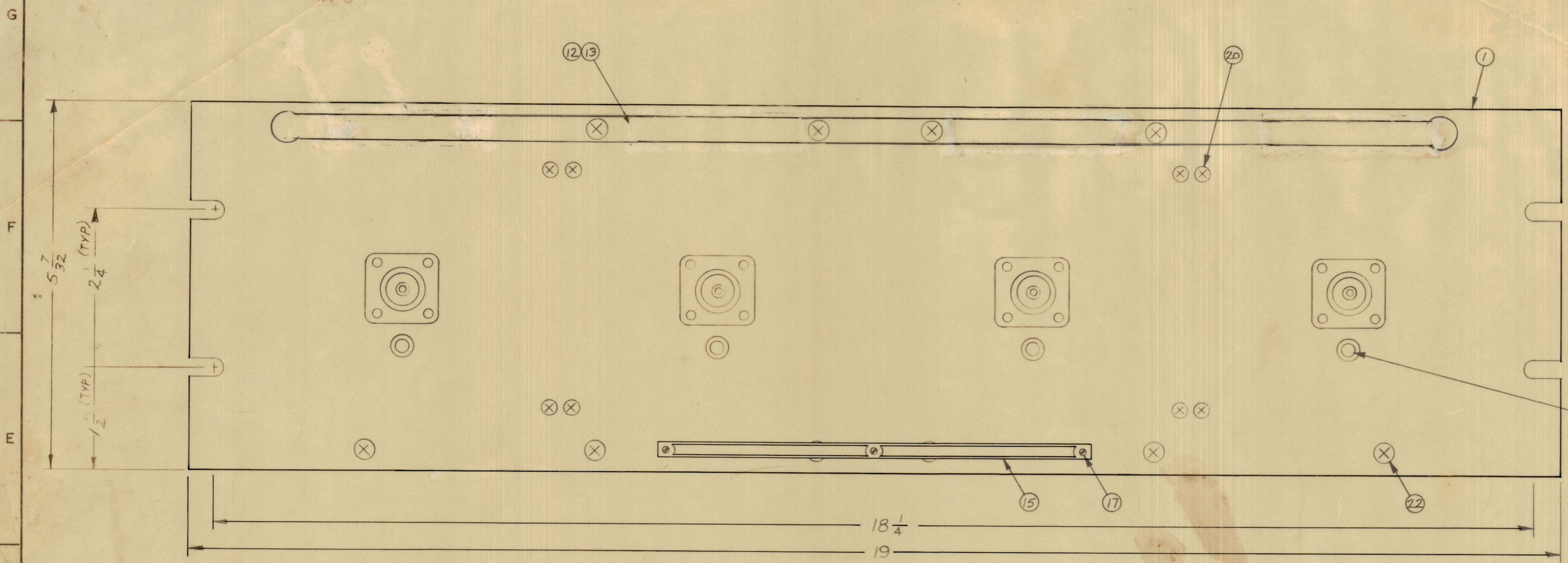


REVISIONS						
ZONE	SYM	DESCRIPTION	DATE	E.M.N. NO.	DRAFT	CHKD
A		ITEM (21) WAS (SCFP), (18) WAS (BN4), (5) WAS PM427-2	2-4-66	15695	831	
B		ITEM (5) WAS PM 427-6	12-8-67	18660	ENG	EFH
C		ITEM (1) MS 576 & ITEM (18) SCFP D488NA DEL PICT. UPDATED	5-1-80	22055	GDL	

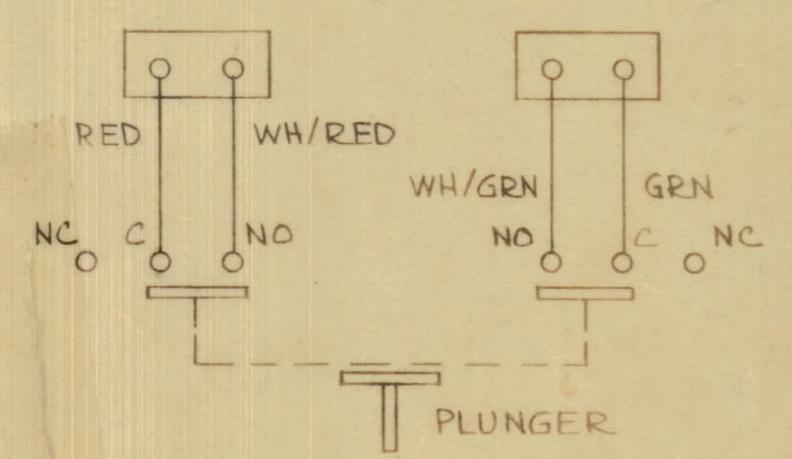


QTY	UNIT	DESCRIPTION	TEST PROCEDURE
X	28	S-716	TEST PROCEDURE
2	27	TM-105-8AR	FANNING STRIP (LOOSE ITEM)
8	26	NTH 0440 BNB	NUT, HEXAGON
8	25	NTH 0440 BNG	NUT, HEXAGON
16	24	LWS04MRN	LOCKWASHER, SPLIT
16	23	LWE04MRN	LOCKWASHER EXTERNAL
12	22	SCFP0632 BNS	SCREW, MACHINE
8	21	SCBP0440 BN36	SCREW, MACHINE
8	20	SCFP0440 BN10	SCREW, MACHINE
16	19	SCBP0440 BNB	SCREW, MACHINE
-	18		
3	17	SFB0256 SN3	SCREW, THREAD CUTTING
2	16	CA-345	CABLE ASSEMBLY
1	15	NP-250	NAMEPLATE, IDENTIFICATION
2	14	MS-154-1	STRADDLE, PLATE
1	13	PR-101-17	FREQUENCY, TAB
1	12	PX-396-17	GUARD, FREQUENCY TAB
-	11		
2	10	TM-102-8	TERMINAL, STRIP BARRIER TYPE
16	9	WA-109-17	WASHER, FIBER
16	8	PM-426	SPACER, SWITCH
8	7	SW-189	SWITCH, MICRO, PUSH
4	6	MS-1124	BRACKET, SWITCH
4	5	PM-427-4	PLUNGER, SWITCH
4	4	BB-115	BEARING OILITE (1/16 A-1448)
2	3	PM-490	BRACE, PANEL
4	2	JJ-168	CONNECTOR, RECEPTACLE
1	1	A-1448	MACHINING, FRONT PANEL

ITEM 16 INSTALLATION COLOR CODE

- 1 RED
- 2 WHITE/RED
- 3 WHITE/GREEN
- 4 GREEN
- 5 RED
- 6 WHITE/RED
- 7 WHITE/GREEN
- 8 GREEN

TYPICAL SCHEMATIC DIAGRAM



ITEM 27. SUPPLIED AS LOOSE ITEM

1	QDP-6C1S4	MODEL USED ON	ABBV. NO.
SCALE	#	A	

MATERIAL			
FINISH	TMC SMOOTH GRAY SEMI-GLOSS ENAMEL	TITLE	PATCH PANEL, QUICK DISCONNECT QDS TO "N"
UNLESS OTHERWISE SPECIFIED DIMENSIONS ARE IN INCHES AND INCLUDE CHEMICALLY APPLIED OR PLATED FINISHES		DRAWN	M. TANTILLO
DECIMALS ± .01	FRACTIONS ± 1/64	CHECKED	J. H. Q.
ANGLES ± .05°		DATE	1/2/67
		DATE	1-2-67

QDP-6C1S4

QDP-6C1S4