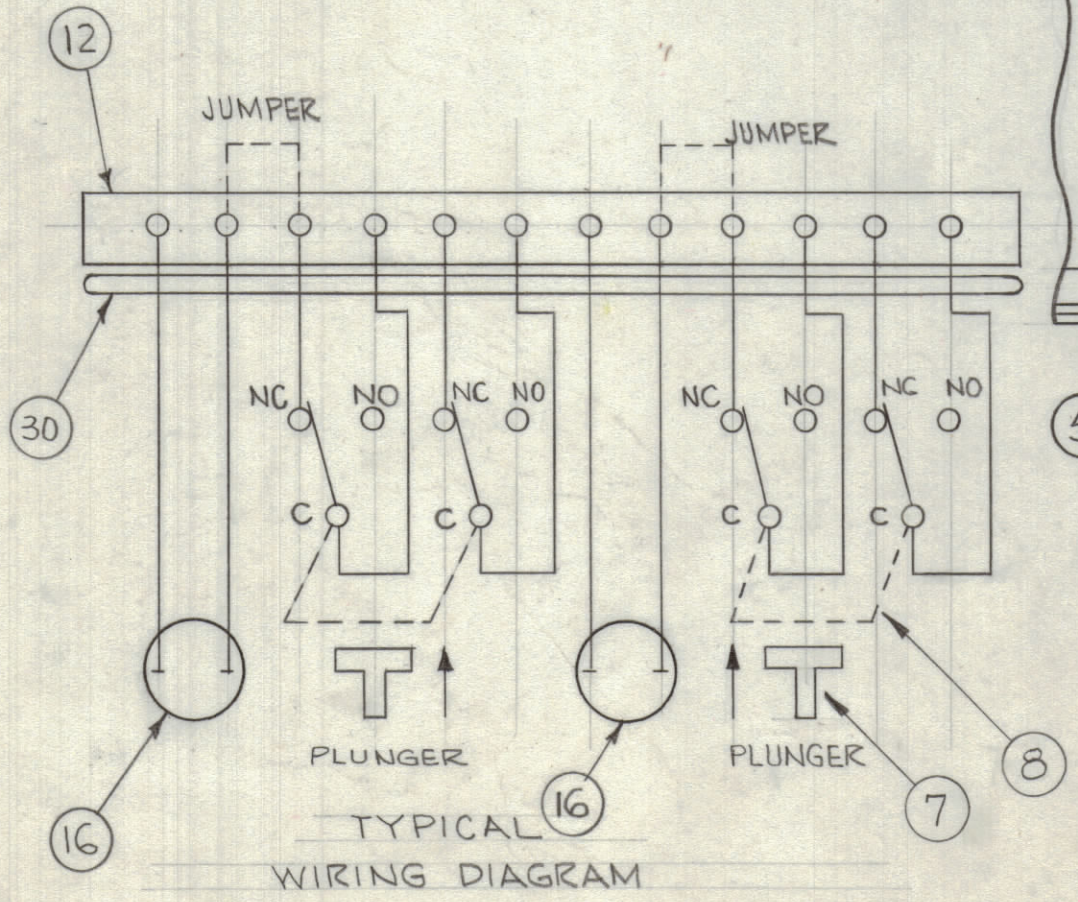
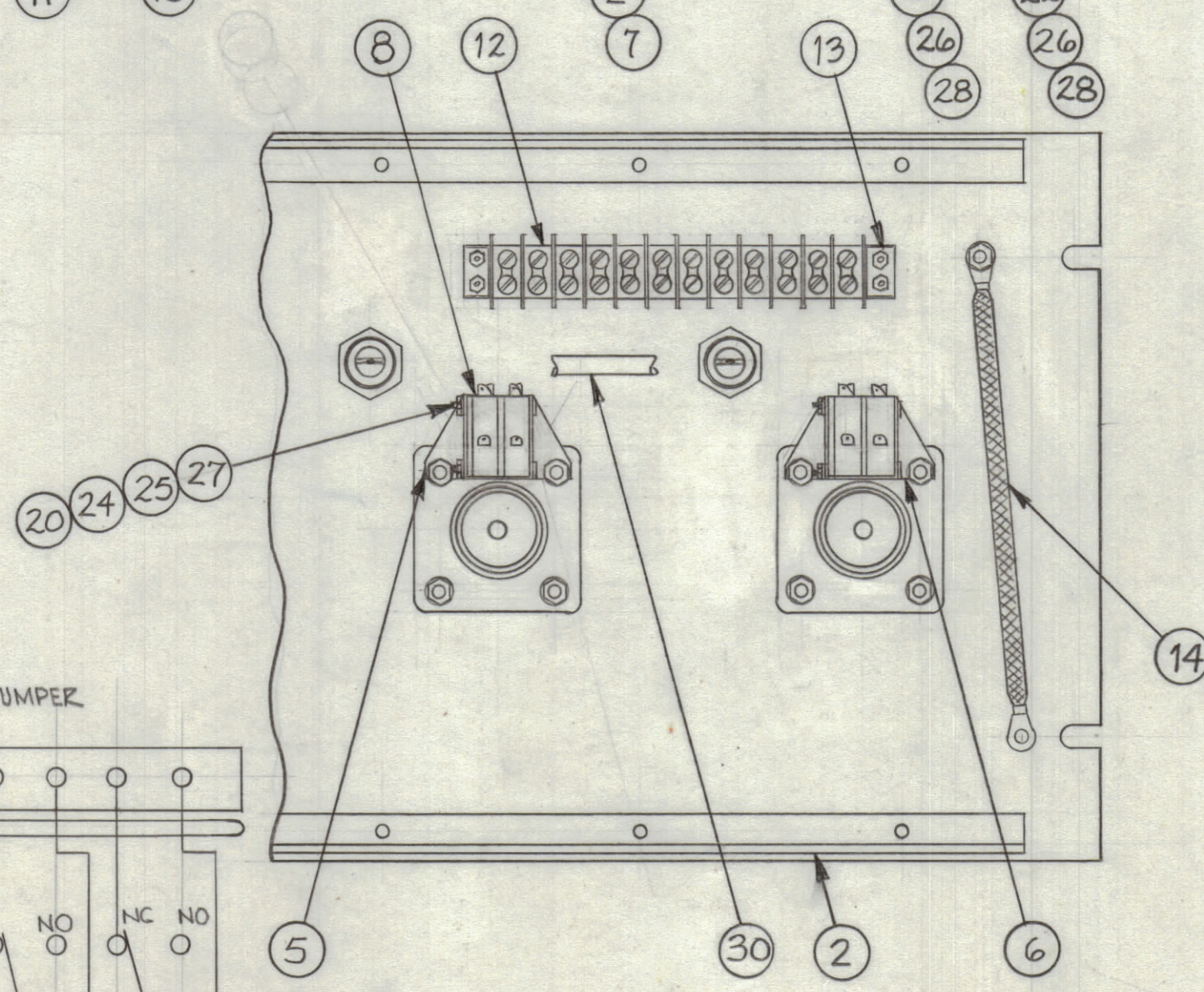
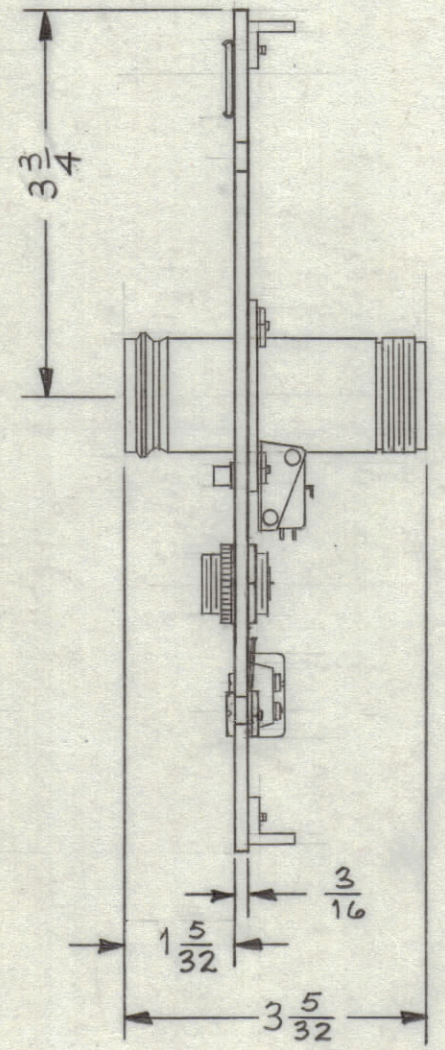
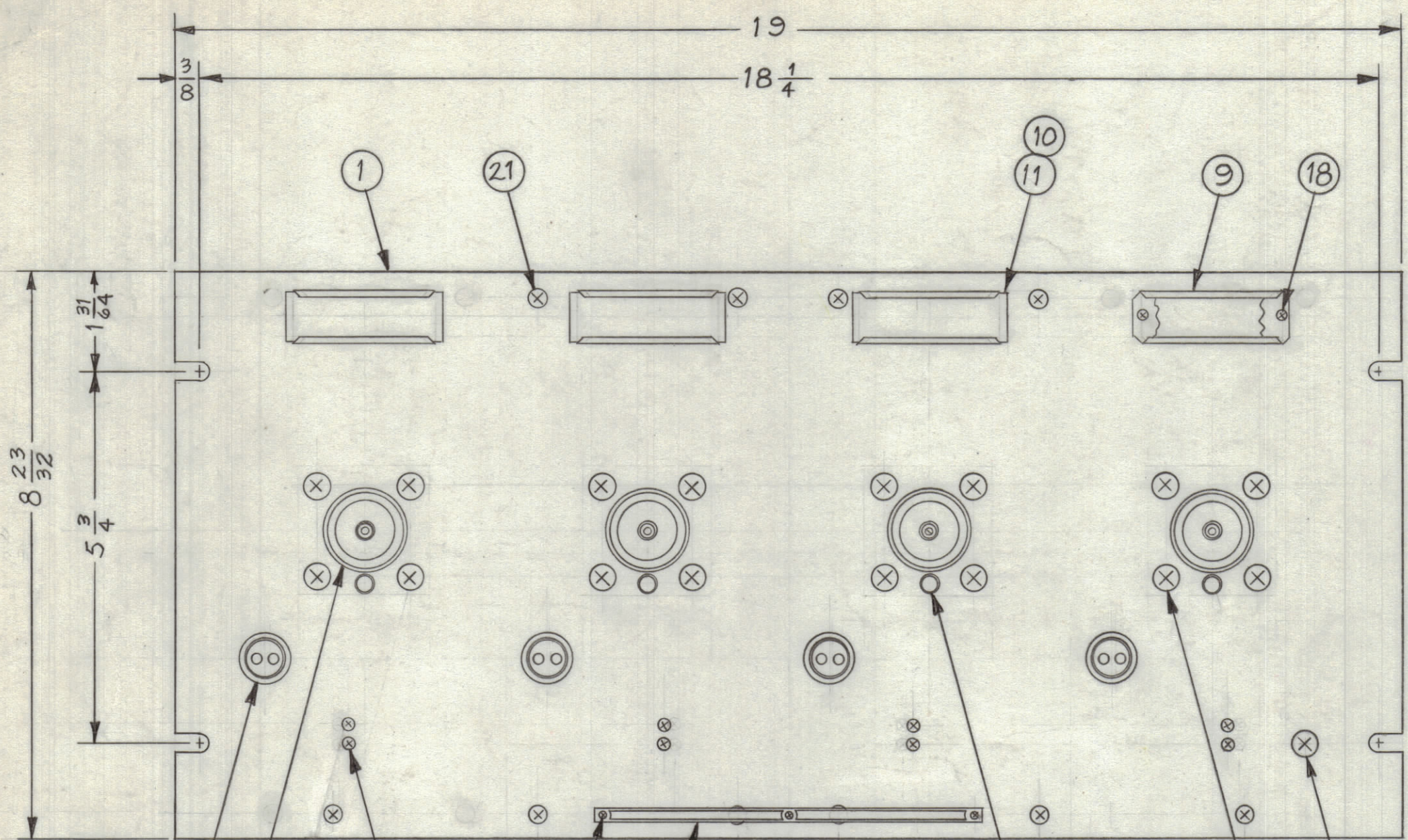


REVISIONS							
ZONE	SYM	DESCRIPTION	DATE	E.M.N. NO.	DRAFT	CHKD	APPD.
—	A	UPDATING & CLARIFICATION OF DWG	11-26-63	10470			



REQ'D.	ITEM	PART NUMBER	DESCRIPTION	SYMBOL
2	30	CA-840	WIRING HARNESS, BRANCHED	
2	29	TM-105-12-AR	FANNING STRIP (LOOSE ITEM)	
17	28	NTH1032BN12	NUT, HEX	
16	27	NTH0440BN6	NUT, HEX	
17	26	LWE10MRN	WASHER, LOCK, EXTERNAL	
16	25	LWE04MRN	WASHER, LOCK, EXTERNAL	
16	24	WI-109-17	WASHER, FIBER	
16	23	SCFP1032BN9	SCREW, MACHINE	
1	22	SCBP1032BN8	SCREW, MACHINE	
12	21	SCFP0632BN5	SCREW, MACHINE	
8	20	SCFP0440BN16	SCREW, MACHINE	
8	19	SCFP0440BN10	SCREW, MACHINE	
8	18	SCFP0348BN4	SCREW, MACHINE	
3	17	SFB0256SN3	SCREW, THREAD CUTTING	
4	16	JJ-10004	CONNECTOR, RECEPTACLE, ELECTRICAL	
1	15	NP-250	NAMEPLATE IDENTIFICATION	
1	14	CA-409-59-6.00	CABLE ASS'Y, GROUND	
4	13	MS-154-1	PLATE, SADDLE	
2	12	TM-102-12	TERMINAL STRIP, BARRIER TYPE	
4	11	PX-623-1	GUARD, PLASTIC	
4	10	PR-103-1	TAB, PAPER	
4	9	MS-2669	HOLDER, CARD	
8	8	SW-189	SWITCH, MICRO	
4	7	PM-427-1	PLUNGER, SWITCH	
4	6	MS-987	BRACKET, SWITCH, RIGHT	
4	5	MS-986	BRACKET, SWITCH, LEFT	
4	4	JJ-174	CONNECTOR, RECEPTACLE	
2	3	PM-490	BRACE, PANEL	
4	2	BB-115	BEARING, OILITE (P/O MS-3615)	
1	1	MS-3615	PANEL, FRONT	

QDP-9E2S4B A

MARTINENGO LIST OF MATERIAL			
MATERIAL ALUMINUM		THE TECHNICAL MATERIEL CORP. MAMARONECK, NEW YORK	
FINISH TMC SMOOTH GRAY SEMI-GLOSS ENAMEL		TITLE PATCH PANEL, QUICK DISCONNECT "LC" TO "QDL"	
QTY./UNIT	MODEL USED ON	ASS'Y. NO.	SCALE
			NTS
UNLESS OTHERWISE SPECIFIED DIMENSIONS ARE IN INCHES AND INCLUDE CHEMICALLY APPLIED OR PLATED FINISHES		DECIMALS .X ± .05 .XX ± .01 .XXX ± .005	FRACTIONS ± 1/64 ANGLES ± 0° 30'
DRAWN M. TANTILLO		DATE 10-31-63	FINAL APPROVAL [Signature]
CHECKED [Signature]		DATE 11-1-63	
ELECT. DES. [Signature]		DATE 11-1-63	
MECH. DES. [Signature]		DATE 11-1-63	
SHEET		QDP-9E2S4B A	
REV. LTR.			

NOTES

THE CONTENTS OF THIS DRAWING ARE THE EXCLUSIVE PROPERTY OF THE TECHNICAL MATERIEL CORP. ITS UNAUTHORIZED USE OR REPRODUCTION IN WHOLE OR IN PART IS STRICTLY FORBIDDEN.