

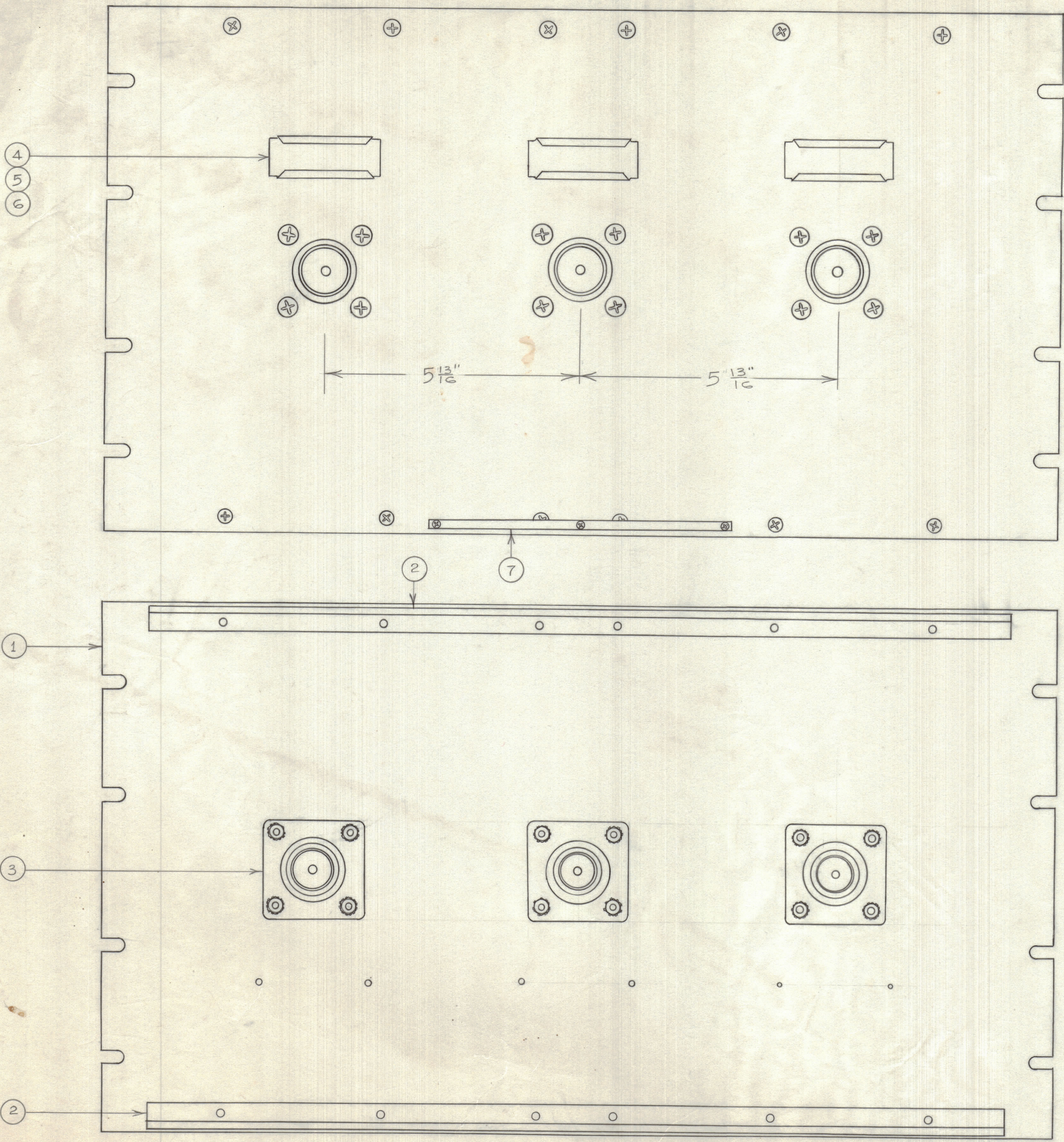
IF IT IS FOUND DESIRABLE TO CHANGE ANY TOLERANCE OR OTHER DETAIL SPECIFIED ON THIS DRAWING NOTIFY THE PURCHASER PROMPTLY.

MAXIMUM ALLOWABLE TOLERANCES HAVE BEEN DETERMINED AND DEVIATIONS WILL BE CAUSE FOR REJECTION REMOVE ALL BURRS AND SHARP EDGES.

DIMENSIONS IN INCHES UNLESS OTHERWISE SPECIFIED

ISSUE	ITEM	CHANGED FROM	DATE	CN. NO.	DRAFTS	CHECKER	ENG. APP.

REQ.	ITEM	PART NO.	DESCRIPTION	SYMBOL
1	1	MS157-6-S	PANEL, FRONT	
2	2	PM490	BRACE, PANEL	
3	3	JJ220	CONNECTOR, RECEPTACLE	
3	4	MS2669	HOLDER, CARD	
3	5	PX623	GUARD PLASTIC	
3	6	PR103-1	TAB, PAPER	
1	7	NP250	NAMEPLATE IDENTIFICATION	



NOTICE TO PERSONS RECEIVING THIS DRAWING

THE TECHNICAL MATERIEL CORPORATION claims proprietary right in the material disclosed hereon. This drawing is issued in confidence for engineering information only and may not be reproduced or used to manufacture anything shown hereon without permission from THE TECHNICAL MATERIEL CORPORATION to the user. This drawing is loaned for mutual assistance and is subject to recall at any time.

Property of:
THE TECHNICAL MATERIEL CORPORATION
 MAMARONECK, NEW YORK

TOLERANCES		SCALE:
ALL	DEC. DIM. ±	DRILL, PUNCH, COMMERCIAL STOCK
OTHERS	FRAC. DIM. ±	SIZES AND MANUFACTURERS
	ANGULAR DIM. ±	TOLERANCES ARE NOT INCLUDED

MODEL	PROJECT NO.	ASS'Y. NO.	DATE
			APR 30/62

STOCK SIZE		TMC (Canada) LIMITED OTTAWA ONTARIO	
MATERIAL		ASSEMBLY	
WEIGHT PER PC		ANTENNA PATCHING	
TYPE & TEMPER		JPC DRAWN	<i>[Signature]</i> ELEC. DES. APP.
HEAT TREAT SPEC.		<i>[Signature]</i> CHECKED	<i>[Signature]</i> MECH. DES. APP.
FINISH & SPEC. NO.		FINAL APPROVAL	
		QDP9F9X3	