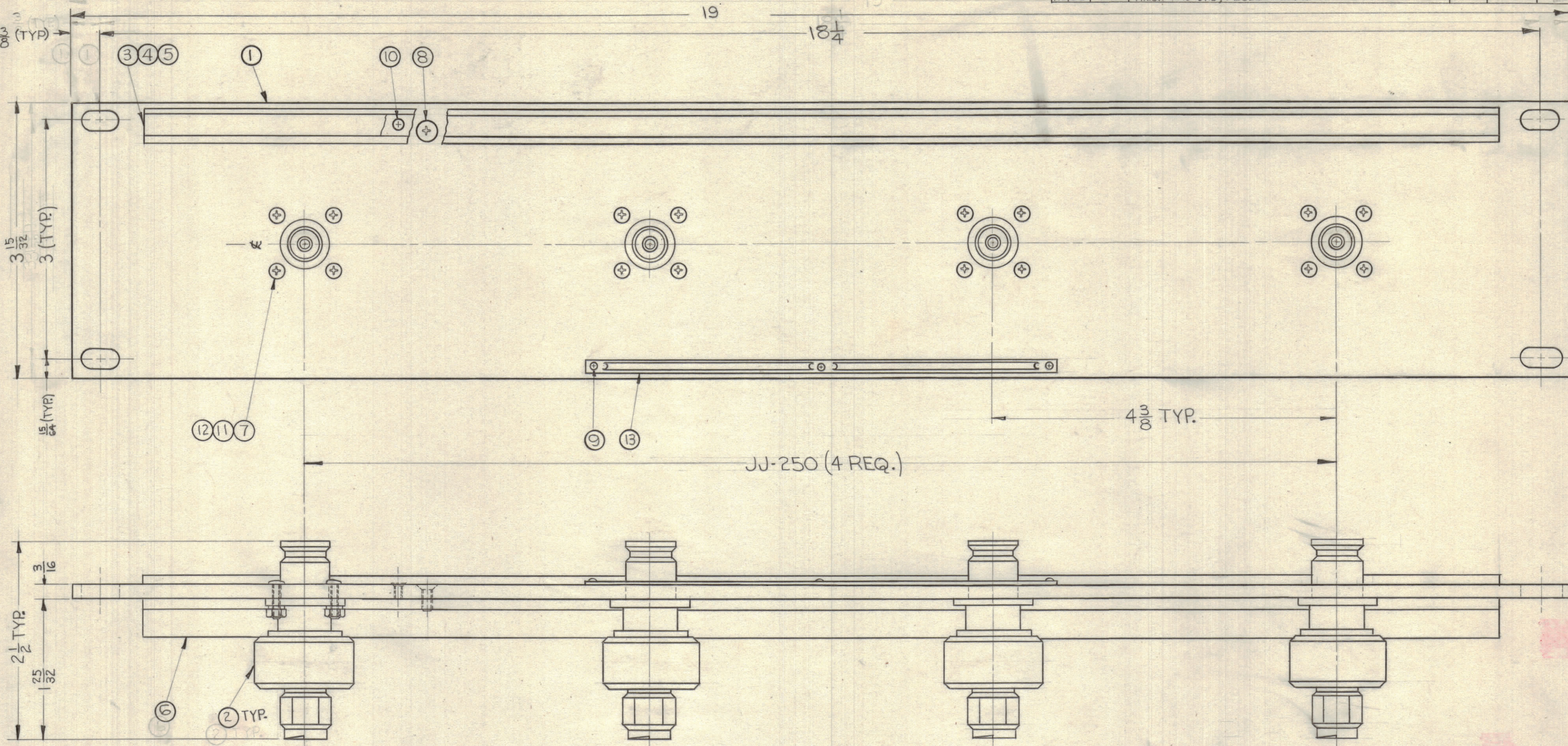


REVISIONS							
ZONE	SYM	DESCRIPTION	DATE	E.M.N. NO.	DRAFT	CHKD	APPD
C2, B7	A	ITEM 13 WAS "SEE NAMEPLATE NOTE," DELETED NAMEPLATE NOTE	3-8-63	8418	RC	YAY	JAY
A3, C2		FINISH WAS S115, ADDED ITEM 14					



NAMEPLATE NOTE:
 NP-232 MILITARY NAMEPLATE
 NP-250 COMMERCIAL NAMEPLATE

REQ'D.	ITEM	PART NUMBER	DESCRIPTION	SYMBOL
X	14	S-721	TEST PROCEDURE	
1	13	NP-250	NAMEPLATE IDENTIFICATION	
16	12	NTH0440BN8	NUT, HEXAGON	
16	11	LWE04MRN	WASHER, LOCK EXTERNAL	
6	10	SCFP0348BN3	SCREW, MACHINE	
3	9	SFPO256SN3	SCREW, THREAD CUTTING	
6	8	SCFP0632BN5	SCREW, MACHINE	
16	7	SCBP0440BN9	SCREW, MACHINE	
1	6	PM-486	BRACE, PANEL	
1	5	PX-396-17	GUARD, TAB	
1	4	PR-101-17	TAB, PAPER	
1	3	MS-1184	HOLDER, CARD	
4	2	JJ-250	ADAPTOR, CONNECTOR	
1	1	MS-2987	MACHINING, FRONT PANEL	

LIST OF MATERIAL			
MATERIAL	ALUMINUM	THE TECHNICAL MATERIEL CORP.	
	19 x 3 15/32 x 3/16	MAMARONECK, NEW YORK	
FINISH	S522 TMC SMOOTH GREY ENAMEL	TITLE	QUICK DISCONNECT PANEL
			FOAMFLEX 1/2 50Ω TO QDS
UNLESS OTHERWISE SPECIFIED DIMENSIONS ARE IN INCHES AND INCLUDE CHEMICALLY APPLIED OR PLATED FINISHES	DRAWN	R. Lurchin	DATE
DECIMALS .X ± .05 .XX ± .01 .XXX ± .005	CHECKED	HSE	5-22-62
FRACTIONS ± 1/64 ANGLES ± 0° 30'	ELECT. DES.		DATE
	MECH. DES.		5-25-62
			DATE
			5/29/62

1	QDP-FX550B1X4	
Q'TY./UNIT	MODEL USED ON	ASS'Y. NO.
SCALE	CODE	
DO NOT SCALE		
THE CONTENTS OF THIS DRAWING ARE THE EXCLUSIVE PROPERTY OF THE TECHNICAL MATERIEL CORP. ITS UNAUTHORIZED USE OR REPRODUCTION IN WHOLE OR IN PART IS STRICTLY FORBIDDEN.		

NOTES

QDP-FX550B1X4 A