

IF IT IS FOUND DESIRABLE TO CHANGE ANY TOLERANCE OR OTHER DETAIL SPECIFIED ON THIS DRAWING NOTIFY THE PURCHASER PROMPTLY.		DIMENSIONS IN INCHES UNLESS OTHERWISE SPECIFIED	
MAXIMUM ALLOWABLE TOLERANCES HAVE BEEN DETERMINED AND DEVIATIONS WILL BE CAUSE FOR REJECTION. REMOVE ALL BURRS AND SHARP EDGES.			
ISSUE	ITEM	CHANGED FROM	DATE
0		PROD RELEASE	26 SEP 73
CH. NO.	DRAFTS	CHECKER	ENG. APP.
		JMM	

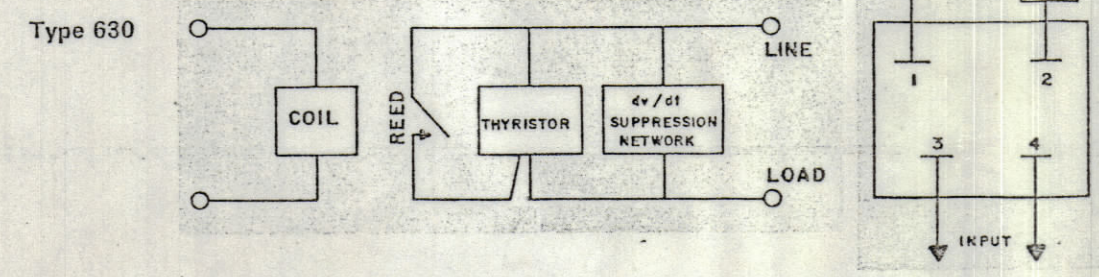
REQ.	ITEM	PART NO.	DESCRIPTION	SYMBOL
------	------	----------	-------------	--------

TYPE	CONTACT VOLTAGE (VAC)	CURRENT RATING (AMPS)	CONTROL INPUT VOLTAGE (VOLTS-DC)	SUPPRESSION	STANDARD OR SPECIAL
630-	1-120	1- 4	A- 5	1-Unsuppressed Coil	00-Standard
	2-240	2- 7 3-10 4-15	B- 6 C-12 D-24 E-48	2-Diode Suppressed Coil	A1 thru Z9 Special Customer Requirements
	0-Special	0-Special	S-Special	0-Special	

EXAMPLE: 630-13C100 is a Type 630 relay with 120 VAC voltage output rating, 10 amp current rating, properly heat sunk, with a 12 VDC nominal control input winding. The device has standard 0.25" quick-connect terminals and no special options or markings.

**OPERATIONAL AND WIRING**

**DIAGRAMS:**

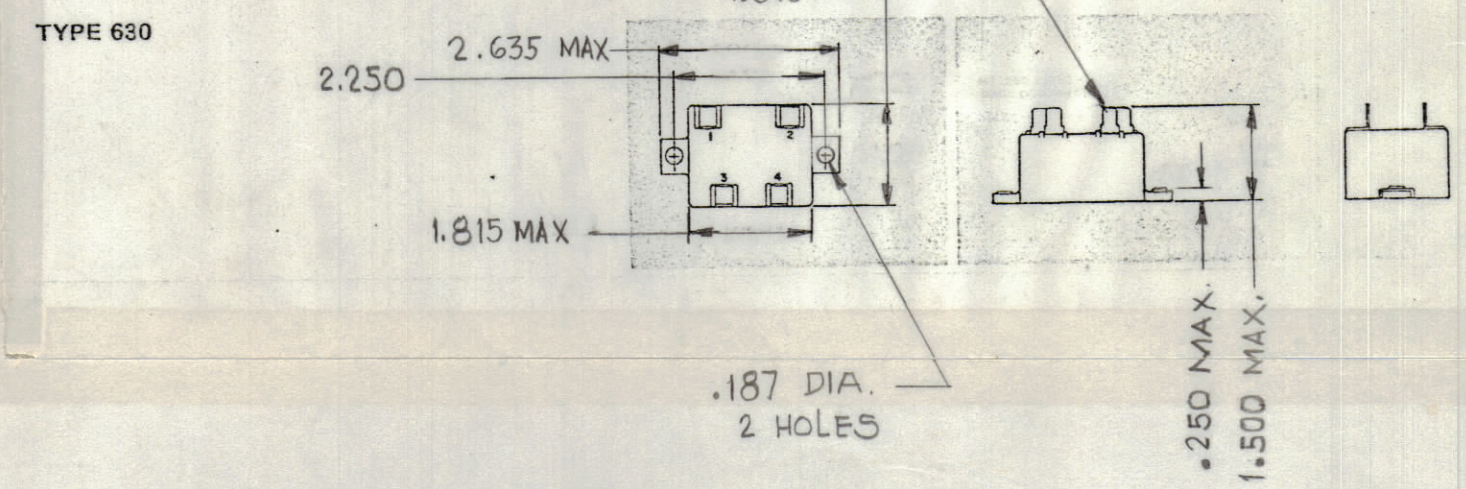


**GENERAL:**

**Weight**  
Type 630—1.25 oz. approximately

**Marking**  
MidTeX name, part number, nominal voltage input, switch rating. Customer marking optional.

**ASSEMBLIES:**



**NOTES:**

- 1. RELAY COULD BE PURCHASED FROM MIDTEX INCORPORATED, TYPE 630-

**RATINGS:**

*Ratings are for both models, unless otherwise specified.*

**Voltage:**  
120 VAC, 50/60 Hz (200 V maximum peak)  
240 VAC, 50/60 Hz (400 V maximum peak)

**Current:** Type 630  
4, 7, 10 and 15 Amps inductive or resistive

**Note:** For Type 630, the internal heat sink will allow a maximum current of 5 amps at 25° C. The maximum switching current is a function of device rating, ambient temperature, type of load and method of external heat sink. To obtain ratings above 5 amps, select desired output current model, seal Type 630 to proper heat sink with silicon grease and refer to Figure 2.

**Voltage drop:** 1.6 V typical at rated current

**Leakage Current:** 6 MA max., 120 VAC / 12 MA max., 240 VAC

**Minimum load current:** 200 MA, RMS

**Non-recurrent surge:** 4 Amp—60 A., 1 cycle  
7 Amp—100 A., 1 cycle  
10 Amp—110 A., 1 cycle  
15 Amp—150 A., 1 cycle

**Inductive load:** 4 V/micro-sec. maximum, commutating dv/dt, at rated current.

**Life:** 500 million operations

**Contact type:** 1 Form A (SPST-NO)

*For Type 630*

DC Input (volts)	Resistance (ohms)	Nominal Current (ma)
5	165	30
6	240	25
12	960	12.5
24	3,840	6.2
48	15,400	3.1

**Dielectric breakdown:** 1,000 VAC, 60 Hz minimum between all mutually insulated terminals and mounting plate.

**Insulation resistance:** Greater than 10<sup>10</sup> ohms I/O isolation

**CONTROL INPUTS:**

**GENERAL:**

RL10046-Ø

COIL VOLTAGE RATING

TMC PART NO.	TYPE
RL10046-1	630-24E200

TOLERANCES		SCALE: ~
ALL OTHERS	DEC. DIM. ± .05 FRAC. DIM. ± 1/64 ANGULAR DIM. ± 0° 30'	DRILL, PUNCH, COMMERCIAL STOCK SIZES AND MANUFACTURERS TOLERANCES ARE NOT INCLUDED.

PSP-500	142/72	A11081	26 SEPT 73
MODEL	PROJECT NO.	ASSY. NO.	DATE

STOCK SIZE		TMC (Canada) LIMITED OTTAWA ONTARIO	
SEE NOTE 1		RELAY	
MATERIAL	WEIGHT PER PC.	SOLID STATE HYBRID	
TYPE & TEMPER.		JMM DRAWN	ELEC. DES. APP. MECH. DES. APP.
HEAT TREAT. SPEC.		CHECKED	FINAL APPROVAL
FINISH & SPEC. NO.		RL10046 Ø	