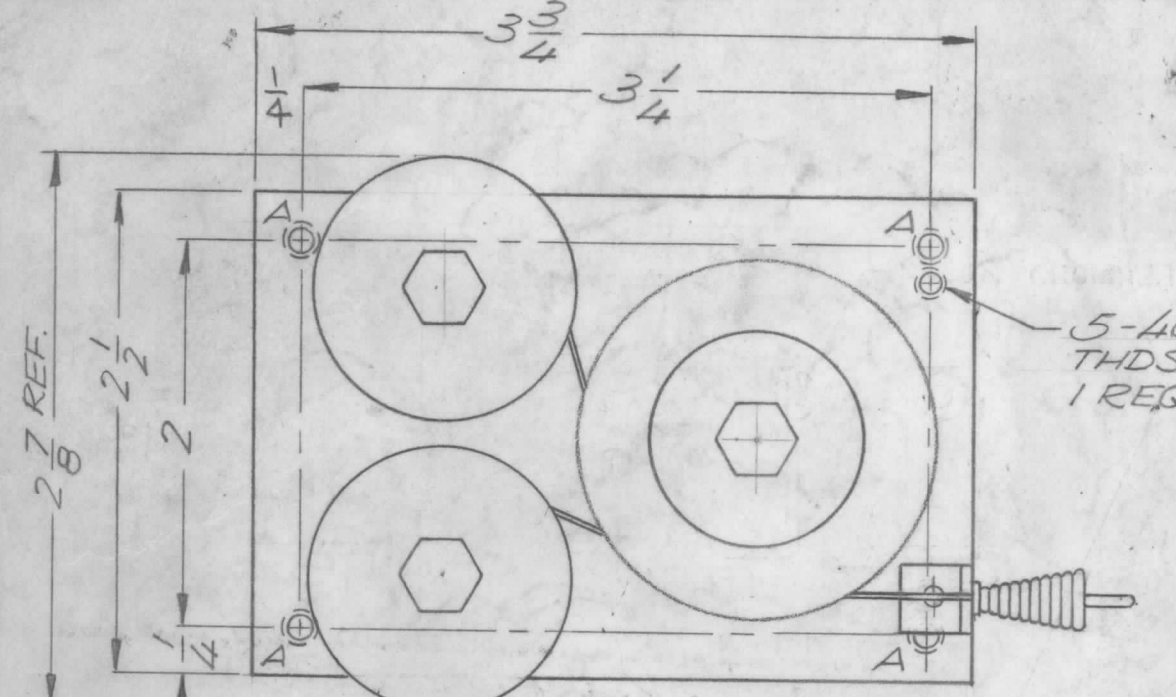
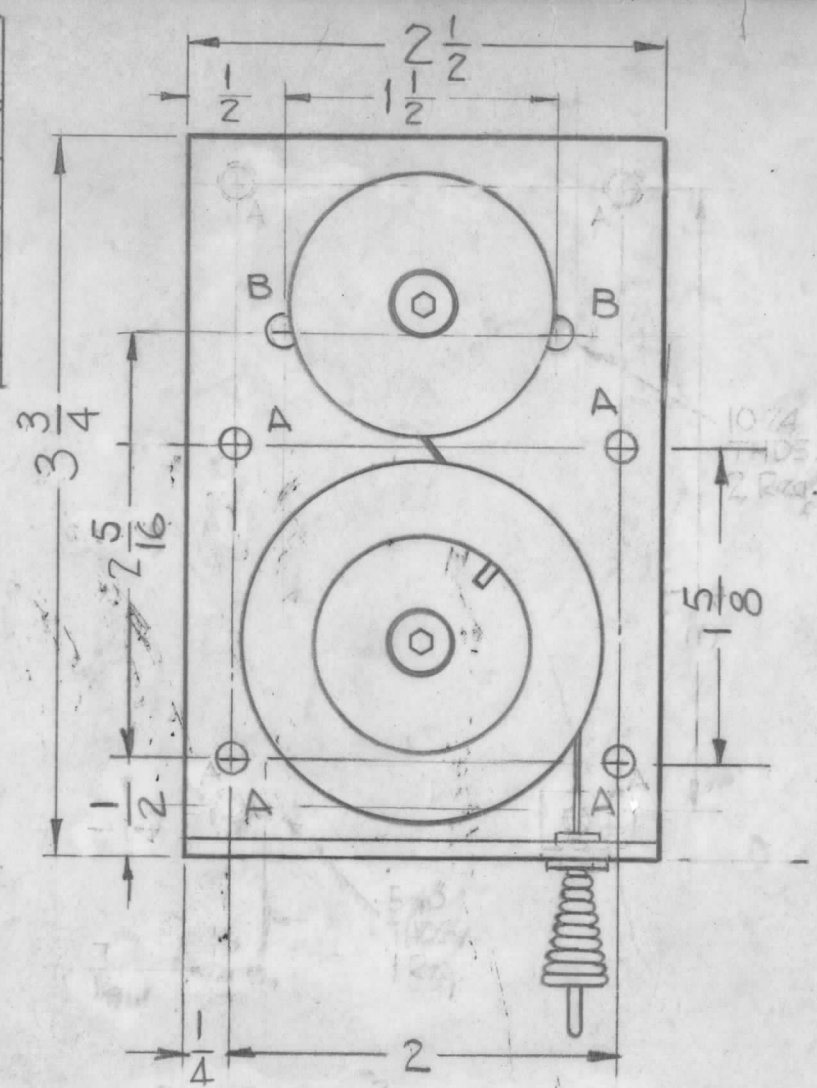


SP-137 G

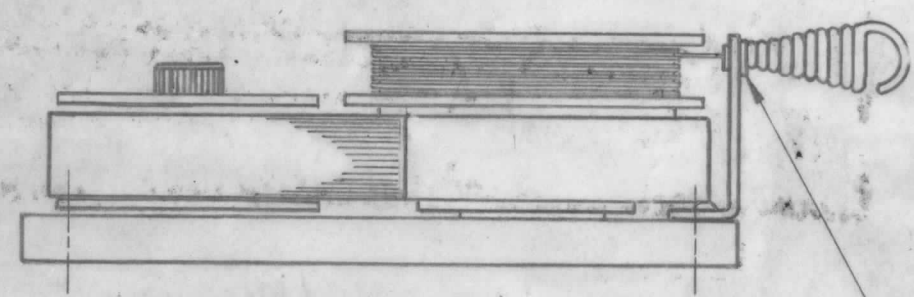
| TMC PART NO. | TORQUE | CABLE LOAD | ENDURANCE MIN~ | MFG. PART NO. | PICT. |
|--------------|-----------------|------------|----------------|---------------|-------|
| SP-137-1 | .75 LBS X INCH | 1 LB | 2500 | 2025-1 | A |
| SP-137-2 | 1.56 LBS X INCH | 2 LBS | 2500 | 2025-2 | A |
| SP-137-3 | 2.33 LBS X INCH | 3 LBS | 4500 | 2025-3 | B |
| SP-137-4 | 3.12 LBS X INCH | 4 LBS | 2500 | 2025-4 | B |
| SP-137-5 | 3.90 LBS X INCH | 5 LBS | 2000 | 2025-5 | B |
| SP-137-1A | .75 LBS X INCH | 1 LB | 2500 | 2917 | A |



PICT. B



PICT. A



NYLON GROMMET

STAMP TMC INITIALS AND PART NUMBER (PER CHART) ON UNDERSIDE OF BOARD IN APPROX. 1/8 HIGH WHITE GOTHIC LETTERS IN ANY CONVENIENT POSITION (EX: TMC SP-137-1)

MODEL - A TYPE
 TORQUE ~ SEE CHART
 CABLE LOAD ~ SEE CHART
 NO. OF ROTATIONS ~ 12
 CABLE LENGTH ~ 72"
 SPRING MATERIAL ~ STAINLESS STEEL
 SPRING WIDTH ~ 1/2"
 SPRING THICKNESS ~ .005
 SPACE REQUIREMENTS - 1 1/4 X 2 1/2 X 3 3/4"
 BASE ~ 3/32 THICK STEEL BAKELITE
 ENDURANCE ~ (MIN. CYCLES) ~ SEE CHART

HOLES

- A - 11/64 DIA 4 REQ'D
- B - 3/16 DIA 2 REQ'D
- C - 5/16 DIA 1 REQ'D

| ISSUE | ITEM | CHANGED FROM | DATE | CH. NO. | DRAFTS | CHECKER | ENG. APP. |
|-------|------|--|----------|---------|--------|---------|-----------|
| G | | SP-137-1A ADD PICT A UPDATED | 1-3-74 | 21191 | GDL | CL | CL |
| F | | DASH 3, 4, 5 & PICT. B ADD SPACE REQ. IN SPECS DELETED | 9/4/69 | 19573 | KLH | EFM | EFM |
| E | 1 | SPRING WIDTH WAS 3/8 | 12-13-66 | 17471 | RME | QC/B | QC/B |
| D | 1 | DN PICT: NOTE "NYLON GROMMET" & DETAIL ADD. | 12-10-64 | 13096 | P.L. | 4.8 | 4.8 |
| C | 1 | PART NOS. CLARIFIED STAMP NOTE ADDED | 8-14-63 | 9757 | AK | WY | WY |
| B | 1 | (4) "A" HOLES ADDED | 7-11-63 | 9625 | AK | WY | WY |
| A | 2 | Add (2) 10-24 THD. HOLES Add (1) 5-40 THD. HOLE | 2/20/61 | 4217 | DOM | QC/B | QC/B |

| TOLERANCES | | SCALE: 5-401-74 (CHART) |
|----------------|--|---------------------------------|
| DEC. DIM. ± | | -2 AS-116 SBT-1K A-1787 |
| FRAC. DIM. ± | | -1 AS-111 GPT-10K A-1755 9-8-59 |
| ANGULAR DIM. ± | | |

| REQ. PER UNIT | MODEL | PROJECT NO. | ASSY. NO. | DATE |
|---------------|-------|-------------|-----------|------|
| | | | | |

| REQ. | ITEM | PART NO. | DESCRIPTION | SYMBOL |
|--|------|-------------------|-----------------|----------|
| THE TECHNICAL MATERIEL CORP. MAMARONECK, NEW YORK | | | | |
| SPRING, RETRACTING | | | | |
| MATERIAL | | | | |
| | | J.C. Biela | W | |
| TYPE & TEMPER | | HEAT TREAT. SPEC. | DRAWN | CHECKED |
| | | | FINAL APPROVAL | |
| FINISH & SPEC. NO. | | ELEC. DES. APP. | MECH. DES. APP. | SP-137 G |