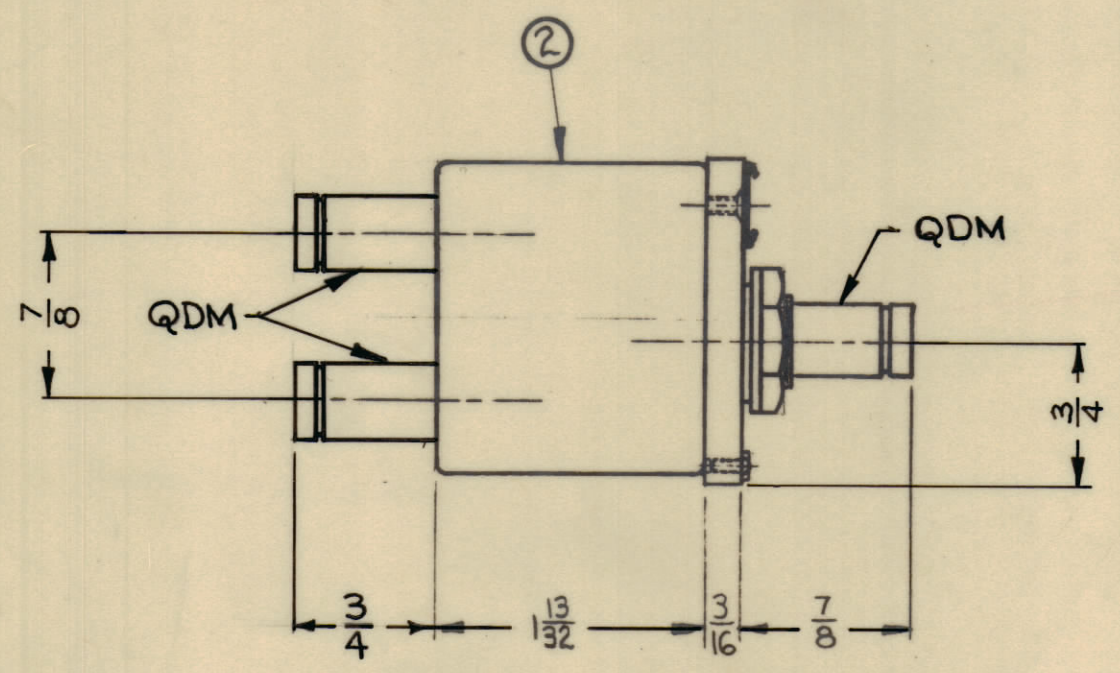
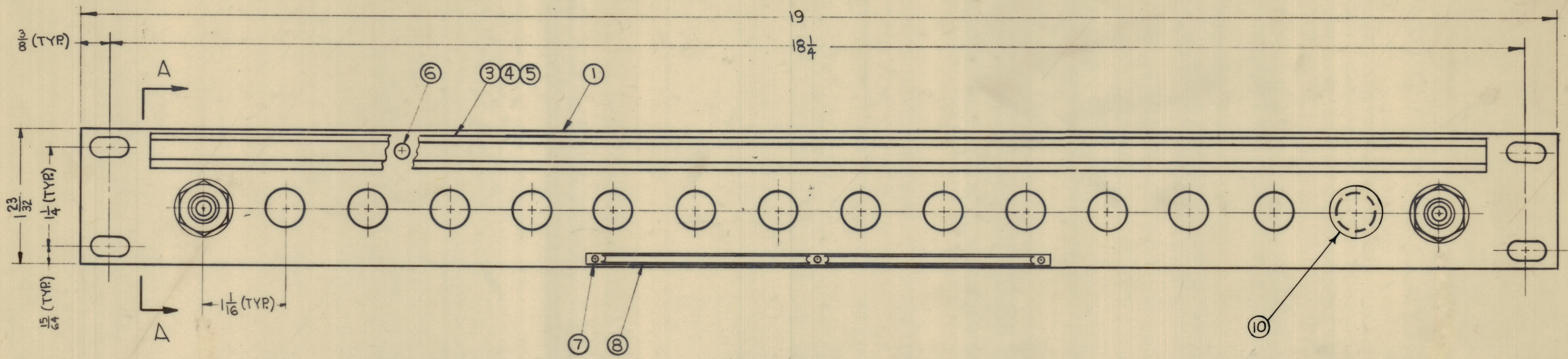


| REVISIONS | | | | | | |
|-----------|-----|--|---------|------------|-------|------|
| ZONE | SYM | DESCRIPTION | DATE | E.M.N. NO. | DRAFT | CHKD |
| | A | ADDED NOTES, CHART, ITEM 10, $\frac{3}{16}$ & $\frac{3}{4}$ DIMS ON VIEW "A-A" ITEMS (2) QTY WAS 16, (8) WAS "SEE NAMEPLATE NOTE, DELETED NAMEPLATE NOTE" | 3-13-62 | 8494 | RC | MS |



SIDE VIEW A-A

- NOTES:
- SWITCHES (ITEM 2) ARE MOUNTED FROM LEFT TO RIGHT.
 - WHEN SWITCH MOUNTING HOLES ARE NOT UTILIZED, PLUG BUTTONS (ITEM 10) ARE MOUNTED ON FACE OF PANEL.
 - REFER TO CHART FOR APPLICATION OF PLUG BUTTONS (ITEM 10) WHEN REQUIRED.

| | | |
|-----------|--------------------|---------------------|
| SPP-30316 | 16 | 0 |
| SPP-30315 | 15 | 1 |
| SPP-30314 | 14 | 2 |
| SPP-30313 | 13 | 3 |
| SPP-30312 | 12 | 4 |
| SPP-30311 | 11 | 5 |
| SPP-30310 | 10 | 6 |
| SPP-30309 | 9 | 7 |
| SPP-30308 | 8 | 8 |
| SPP-30307 | 7 | 9 |
| SPP-30306 | 6 | 10 |
| SPP-30305 | 5 | 11 |
| SPP-30304 | 4 | 12 |
| SPP-30303 | 3 | 13 |
| SPP-30302 | 2 | 14 |
| SPP-30301 | 1 | 15 |
| MODEL | QUANTITY ITEM 2 | QUANTITY ITEM 10 |

| SEE CHART | ITEM | PART NUMBER | DESCRIPTION | SYMBOL |
|-----------|------|-------------|--------------------------|--------|
| X | 10 | HB-101-11-G | PLUG BUTTON | |
| X | 9 | S-692 | TEST PROCEDURE | |
| 1 | 8 | NP-251 | NAMEPLATE IDENTIFICATION | |
| 3 | 7 | SFBP0256SN3 | SCREW, THREAD CUTTING | |
| 6 | 6 | SCFP0348BN3 | SCREW, MACHINE | |
| 1 | 5 | PX-396-17 | GUARD, TAB | |
| 1 | 4 | PR-101-17 | TAP, PAPER | |
| 1 | 3 | MS-1184 | HOLDER, CARD | |
| SEE CHART | 2 | SW-317 | SWITCH, JACK ASSEMBLY | |
| 1 | 1 | MS-2973 | MACHINING, FRONT PANEL | |

| LIST OF MATERIAL | | | |
|---|---|--|------|
| MATERIAL | ALUMINUM 19x3 $\frac{15}{32}$ x $\frac{3}{16}$ | THE TECHNICAL MATERIEL CORP. MAMARONECK, NEW YORK | |
| FINISH | 5115 TMC SMOOTH GREY ENAMEL | TITLE PANEL, PATCH R.F. SWITCHING | |
| UNLESS OTHERWISE SPECIFIED DIMENSIONS ARE IN INCHES AND INCLUDE CHEMICALLY APPLIED OR PLATED FINISHES | | DRAWN | DATE |
| DECIMALS .X \pm .05 .XX \pm .01 .XXX \pm .005 | | DATE | DATE |
| FRACTIONS \pm 1/64 ANGLES \pm 0° 30' | | DATE | DATE |
| TOLERANCES | | DATE | DATE |
| SCALE | | DATE | DATE |
| DO NOT SCALE | | DATE | DATE |
| THE CONTENTS OF THIS DRAWING ARE THE EXCLUSIVE PROPERTY OF THE TECHNICAL MATERIEL CORP. ITS UNAUTHORIZED USE OR REPRODUCTION IN WHOLE OR IN PART IS STRICTLY FORBIDDEN. | | DATE | DATE |

| QTY./UNIT | MODEL USED ON | ASSY. NO. |
|-----------|---------------|-----------|
| SEE CHART | | |

SPP-30316 A

NOTES

SPP-30316 A