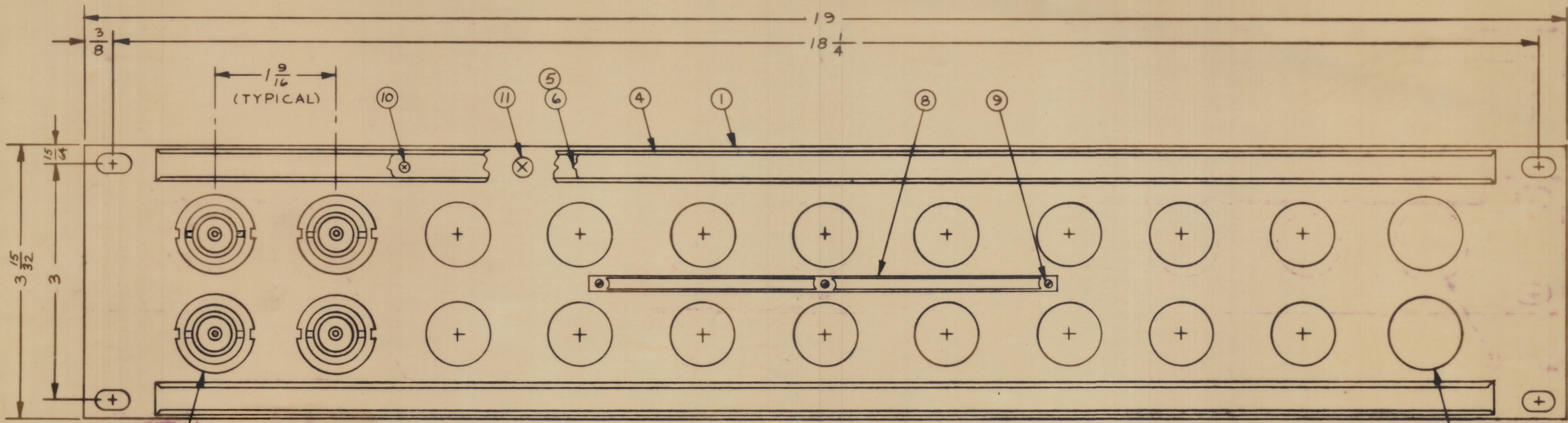


REVISIONS						
ZONE	SYM	DESCRIPTION	DATE	E.M.N. NO.	DRAFT	APPD
	0	ORIGINAL RELEASE FOR PRODUCTION	4/15/64			

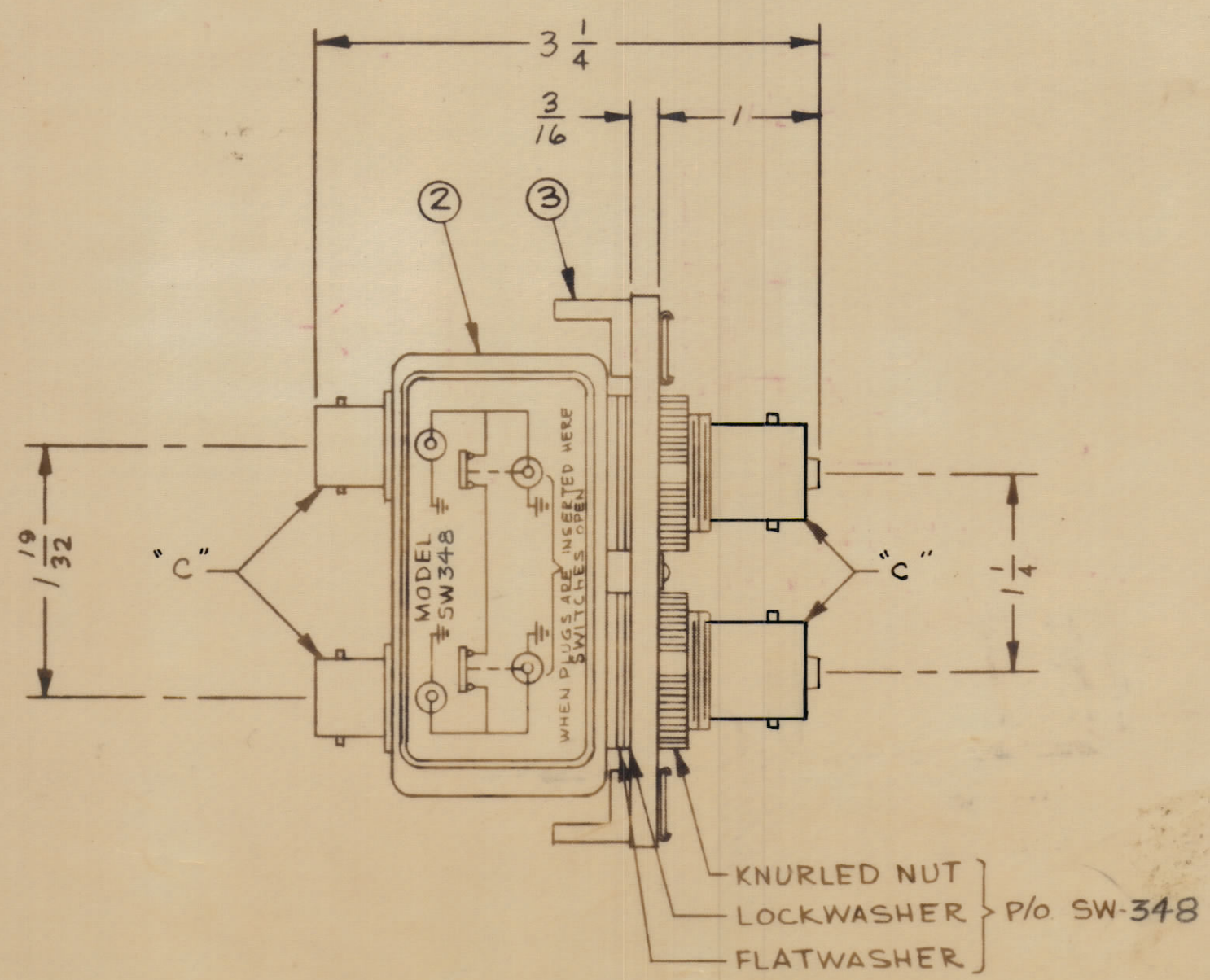


NOTE 1

7 NOTE 2 AND 3

MODEL DESIGNATION  
**SPP-525B 11**  
 BASIC MODEL    PANEL HEIGHT    NO. OF JACK SWITCHES

SPP-525B 11	11	0
SPP-525B 10	10	2
SPP-525B 9	9	4
SPP-525B 8	8	6
SPP-525B 7	7	8
SPP-525B 6	6	10
SPP-525B 5	5	12
SPP-525B 4	4	14
SPP-525B 3	3	16
SPP-525B 2	2	18
SPP-525B 1	1	20
MODEL	QUAN. ITEM 2	QUAN. ITEM 7



- NOTES:
1. SWITCHES (ITEM 2) ARE MOUNTED FROM LEFT TO RIGHT.
  2. WHEN SWITCH MOUNTING HOLES ARE NOT UTILIZED, PLUG BUTTONS (ITEM 7) ARE MOUNTED ON FACE OF FRONT PANEL.
  3. REFER TO CHART FOR APPLICATION OF PLUG BUTTON (ITEM 7) WHEN REQUIRED.

REQ'D.	ITEM	PART NUMBER	DESCRIPTION	SYMBOL
1	14	TG-102	TAG, WARNING	
X	13	S-685	TEST PROCEDURE	
1	12	TP-109	WRENCH, SOCKET (LOOSE ITEM)	
12	11	SCFP0632BN5	SCREW, MACHINE	
12	10	SCFP0348BN3	SCREW, MACHINE	
3	9	SFB0256SN3	SCREW, THREAD CUTTING	
1	8	NP-251	NAMEPLATE, IDENTIFICATION	
SEE CHART	7	HB-101-5-G	BUTTON, PLUG	
2	6	PX-396-17	GUARD, TAB	
2	5	PR-101-17	TAB, PAPER	
2	4	MS-1184	HOLDER, TAB	
2	3	PM-490	BRACE, PANEL	
SEE CHART	2	SW-348	SWITCH, R.F.	
1	1	MS-1182	PANEL FRONT, MACHINING	

MARTINENGO LIST OF MATERIAL			
MATERIAL	ALUMINUM	THE TECHNICAL MATERIEL CORP. MAMARONECK, NEW YORK	
FINISH	TMC SMOOTH GRAY SEMI-GLOSS ENAMEL	TITLE PATCH PANEL, R.F. SWITCHING DUAL "C" TO DUAL "C"	
UNLESS OTHERWISE SPECIFIED DIMENSIONS ARE IN INCHES AND INCLUDE CHEMICALLY APPLIED OR PLATED FINISHES	SCALE NTS	DATE 1-28-63	DATE 4-15-64
DECIMALS X ± .05 XX ± .01 XXX ± .005	CODE A	DATE	DATE
FRACTIONS ± 1/64 ANGLES ± 0° 30'	TOLERANCES	DATE	DATE
THE CONTENTS OF THIS DRAWING ARE THE EXCLUSIVE PROPERTY OF THE TECHNICAL MATERIEL CORP. ITS UNAUTHORIZED USE OR REPRODUCTION IN WHOLE OR IN PART IS STRICTLY FORBIDDEN.		DATE	DATE
SHEET		DATE	DATE

NOTES

SPP-525B11