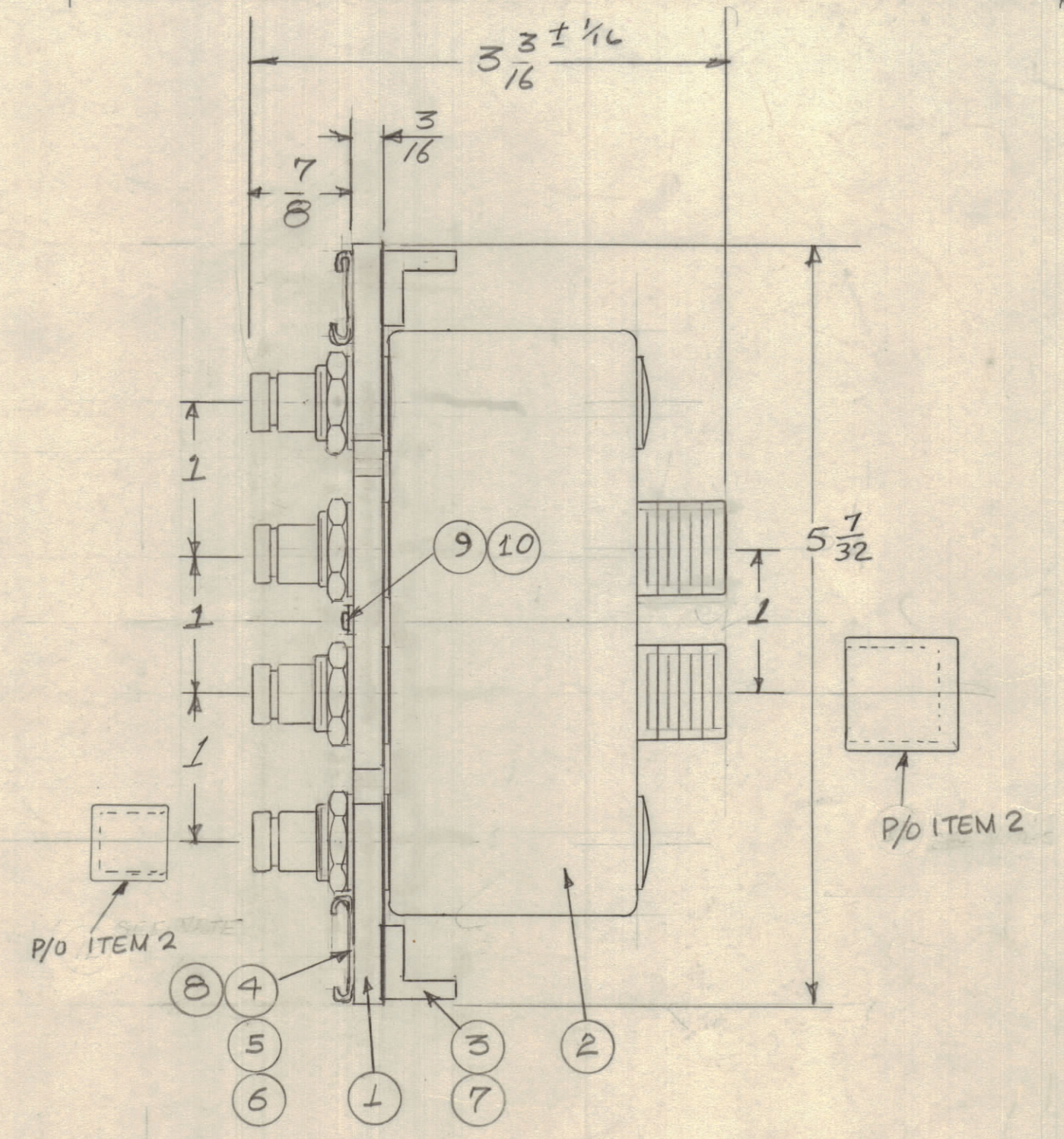
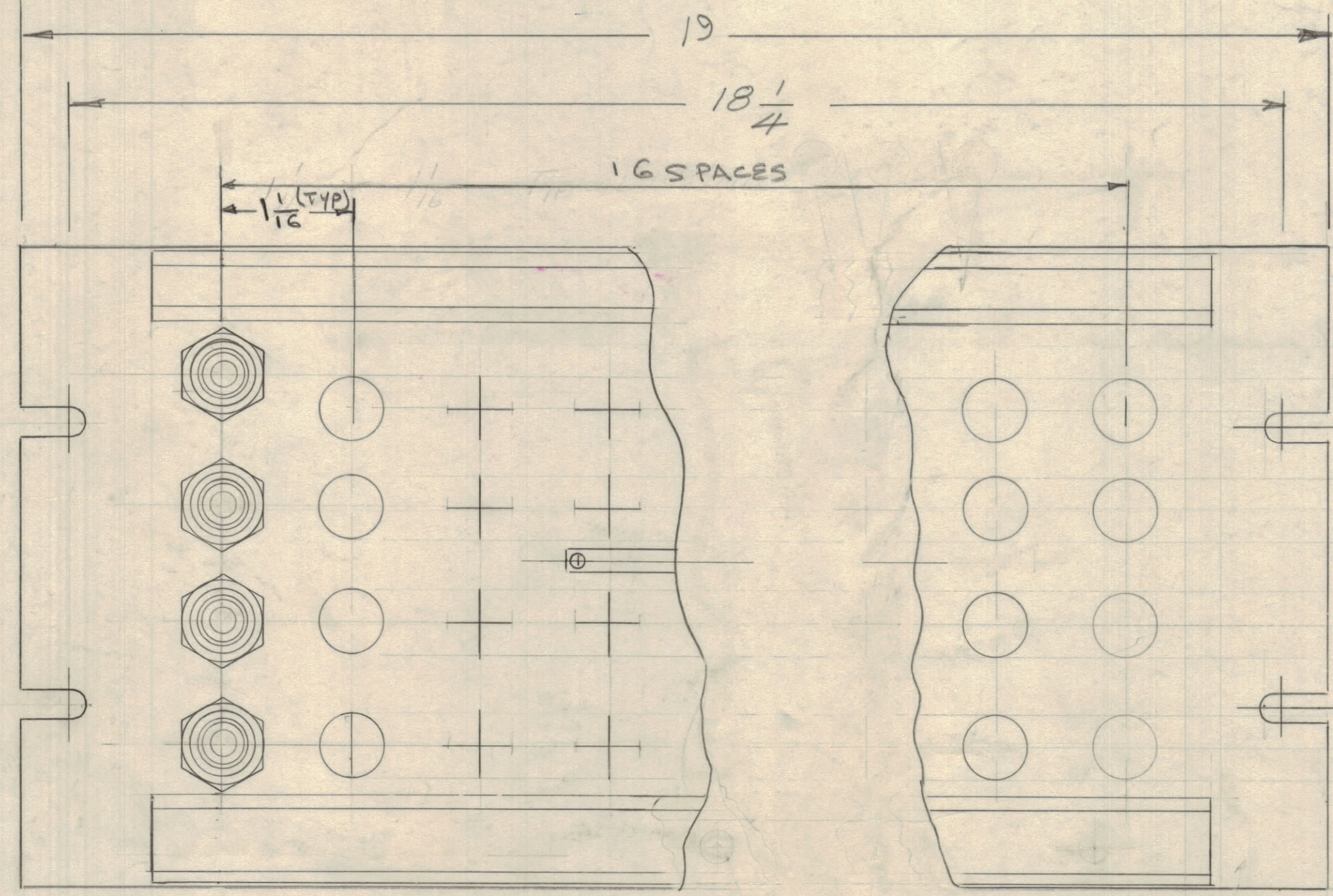


REVISIONS					
ZONE	SYM	DESCRIPTION	DATE	E.M.N. NO.	APPD
Ø		ORIGINAL RELEASE FOR PRODUCTION	9-20-67	Ø	R.G.



SPP-PA-116 Ø

REQ'D.	ITEM	PART NUMBER	DESCRIPTION	SYMBOL
2	13	PL-341205	CAPS, PLASTIC	
4	12	MS-SW-9261	CAPERS, PLASTIC	
3	10	SCB0256SN3	SCREW, SELF TAPPING	
1	9	NP-250	NAMEPLATE	
12	8	SCFP0348BN3	SCREW, MACHINE	
12	7	SCFP0632BN5	SCREW, MACHINE	
2	6	PX-670-17	GUARD TAB, PLASTIC	
2	5	PR-104	STRIP, PAPER, DESIGNATOR	
2	4	MS-3023	HOLDER CARD	
2	3	PM 490	BRACE PANEL	
16	2	SW 426	SWITCH, R.F.	
1	1	MS-4920	PANEL, FRONT	

LIST OF MATERIAL				
MATERIAL	ALUM.			
FINISH	S115 SMOOTH GRAY ENAM.			
THE TECHNICAL MATERIEL CORP. MAMARONECK, NEW YORK		TITLE PANEL, ASSEMBLY SWITCH, JACK, BRIDGING.		
DRAWN	DATE	FINAL APPROVAL	DATE	
CHECKED	DATE		DATE	
ELECT. DES.	DATE	SPP-PA-116		
MECH. DES.	DATE	REV. LTR.		

1	SPP-PA-116	
Q'TY./UNIT	MODEL USED ON	ASS'Y. NO.
SCALE	CODE	

**NOTES**

THE CONTENTS OF THIS DRAWING ARE THE EXCLUSIVE PROPERTY OF THE TECHNICAL MATERIEL CORP. ITS UNAUTHORIZED USE OR REPRODUCTION IN WHOLE OR IN PART IS STRICTLY FORBIDDEN.

UNLESS OTHERWISE SPECIFIED DIMENSIONS ARE IN INCHES AND INCLUDE CHEMICALLY APPLIED OR PLATED FINISHES

DECIMALS .X ± .05 .XX ± .01 .XXX ± .005 FRACTIONS ± 1/64 ANGLES ± 0° 30'