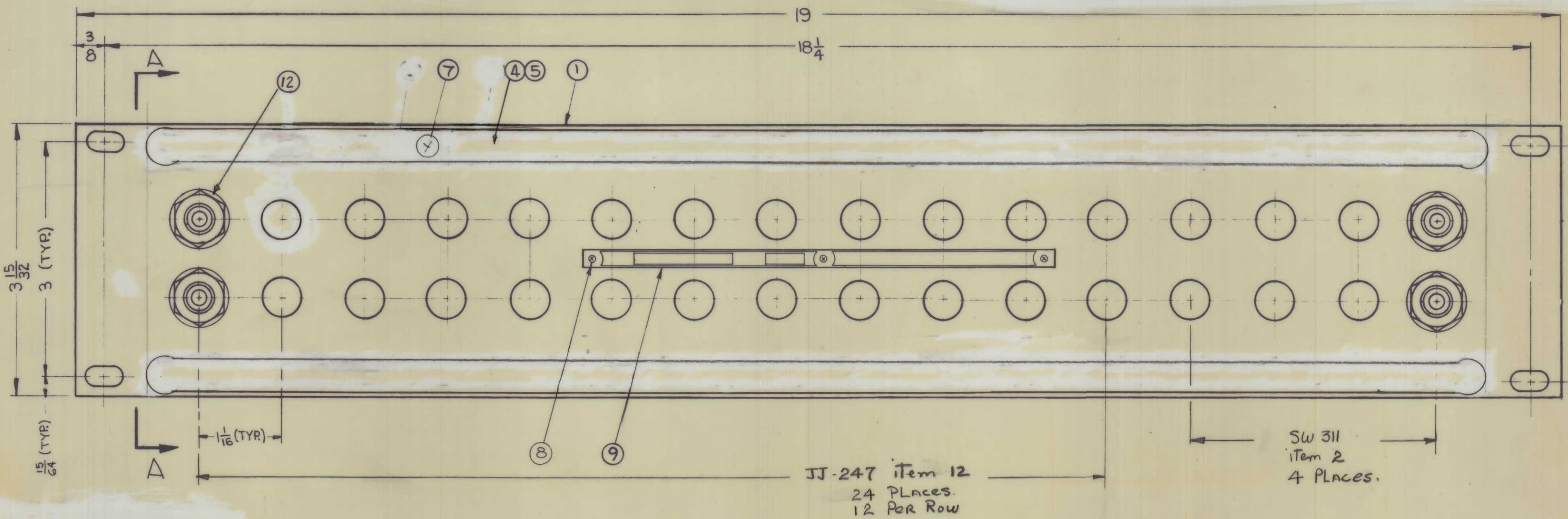
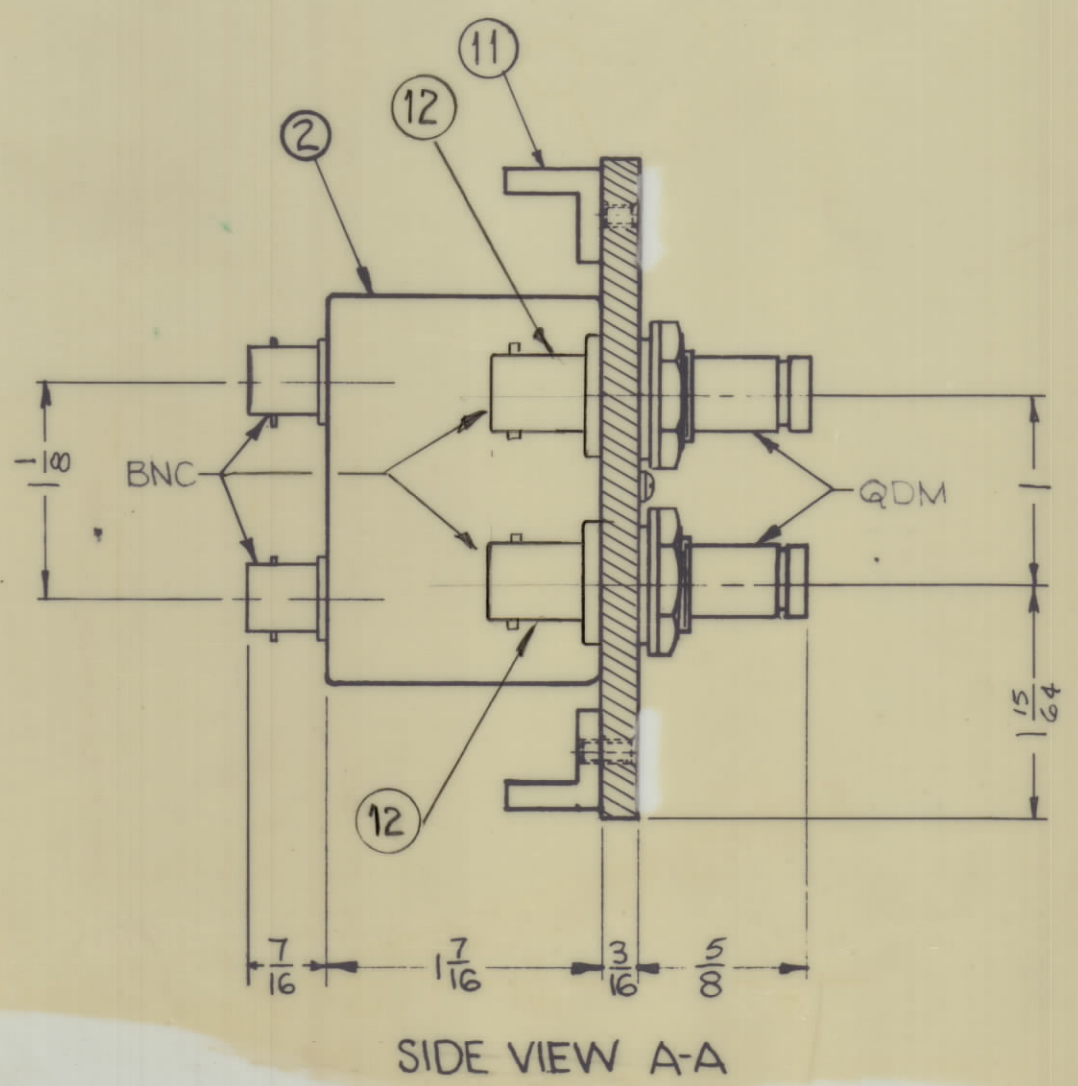


REVISIONS						
ZONE	LTR	DESCRIPTION	DATE	E.M.N.NO	DRAFT	CHKD APPD
	B	ORIGINAL RELEASE FOR PRODUCTION	12-12-67		RG	JMW
	A	ITEM 3 & ITEM 6 DEL. PICT. UPDATED	6-6-84	22063	G.D.C.	



JJ-247 Item 12  
24 PLACES.  
12 PER ROW

SW 311  
Item 2  
4 PLACES.



SIDE VIEW A-A

NOTES:  
1. SWITCHES (ITEM 2) ARE MOUNTED FROM LEFT TO RIGHT.  
2. MACHINE SCREWS (ITEM 7) ARE TO BE USED IN ALL HOLES UNLESS OTHERWISE SPECIFIED.  
3. ALL DIMENSIONS ARE IN INCHES UNLESS OTHERWISE SPECIFIED.

QTY.	ITEM	PART NUMBER	DESCRIPTION	SYMBOL
24	12	JJ-247	CONNECTOR, ADAPTER, BNC	
2	11	PM-486	BRACE, PANEL	
X	10	S-691	TEST PROCEDURE	
1	9	NP-878	NAMEPLATE, IDENTIFICATION	
3	8	SFBPO256SN3	SCREW, THREAD CUTTING	
12	7	SCFPO632BN5	SCREW, MACHINE	
	6			
2	5	PX-396-17	GUARD, TAB	
2	4	PR-101-17	TAP, PAPER	
	3			
4	2	SW-311	SWITCH, JACK ASSEMBLY	
1	1	MS-2975	MACHINING, FRONT PANEL	

MARTINENGO		LIST OF MATERIAL	
MATERIAL	ALUMINUM 19 x 3 15/32 x 3/16 THK	THE TECHNICAL MATERIEL CORP. MAMARONECK, NEW YORK	
FINISH	SI15 TMC SMOOTH GREY ENAMEL	TITLE PANEL, PATCH R.F. SWITCHING	
QTY./UNIT	1 SPP-PA-126	SCALE	DO NOT SCALE
MODEL USED ON		ASS'Y. NO.	
CODE			
THE CONTENTS OF THIS DRAWING ARE THE EXCLUSIVE PROPERTY OF THE TECHNICAL MATERIEL CORP. ITS UNAUTHORIZED USE OR REPRODUCTION IN WHOLE OR IN PART IS STRICTLY FORBIDDEN.		DECIMALS .X ± .05 .XX ± .01 .XXX ± .005	FRACTIONS ± 1/64 ANGLES ± 0° 30'
DRAWN	abm	DATE	12-11-67
CHECKED	abm	DATE	12-11-67
ELECT. DES.		DATE	
MECH. DES.		DATE	
SPP-PA-126		A	
SHEET		REV. LTR.	

SPP-PA-126  
A

MS 1184