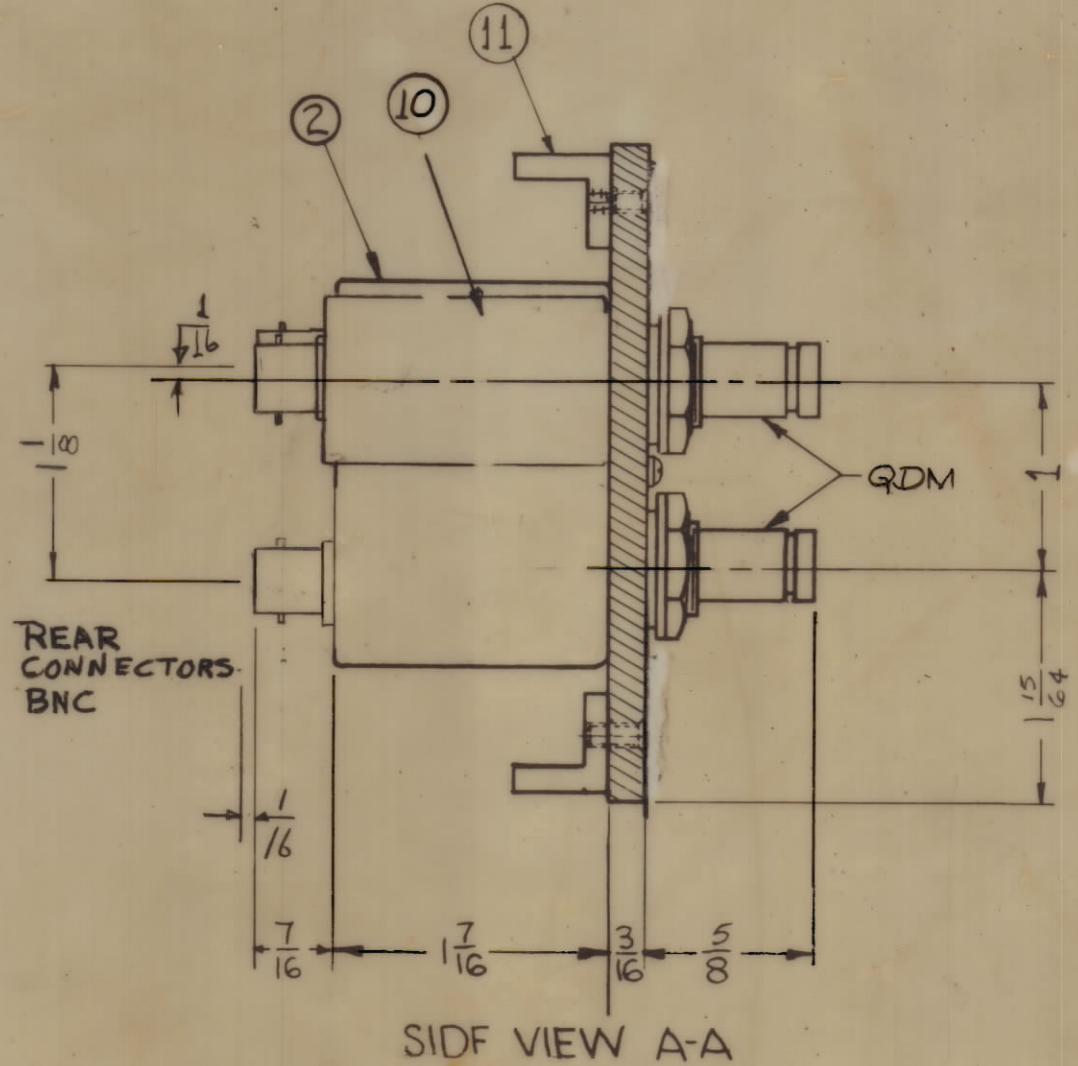
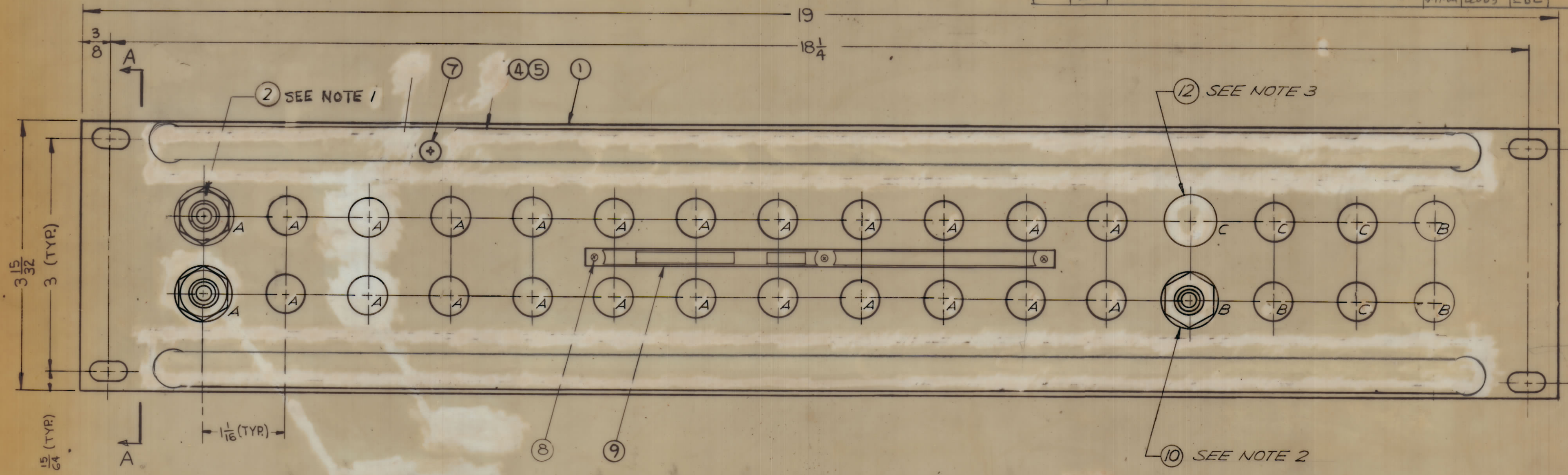


ZONE	SYM	DESCRIPTION	DATE	E.M.N. NO.	DRAFT	CHKD	APPD

ZONE	SYM	DESCRIPTION	DATE	E.M.N. NO.	DRAFT	CHKD	APPD
X		EXP. RELEASE	6/16/69			K.H.	
0		ORIGINAL RELEASE FOR PRODUCTION	6/19/69			GE	
A		ITEM 3 & ITEM 6 DEL. ITEM 4 WAS PR 10A & ITEM 5 PX 670	6-11-69	22063		CBL	



Note: Switch mounting information.  
 1. A. Mount item 2 12 PLACES  
 2. B. Mount item 10 4 PLACES  
 3. C. Insert item 12 4 PLACES

REQ'D.	ITEM	PART NUMBER	DESCRIPTION	SYMBOL
4	12	HB-101-11-G	PLUG, BUTTON	
2	11	PM-486	BRACE, PANEL	
4	10	JJ 247	CONN. RECP QDM TO BNC	
1	9	NP 878	NAMEPLATE, IDENTIFICATION	
3	8	SFBPO256SN3	SCREW, THREAD CUTTING	
12	7	SCFPO632BN5	SCREW, MACHINE	
	6			
2	5	PX 396-17	GUARD, TAB	
2	4	PR-101-17	TAP, PAPER	
	3			
12	2	SW-311	SWITCH, JACK ASSEMBLY	
1	1	MS-2975	MACHINING, FRONT PANEL	

MATERIAL		THE TECHNICAL MATERIEL CORP.	
ALUMINUM 19x3 15/32 x 3/16		MAMARONECK, NEW YORK	
FINISH S115 TMC SMOOTH GREY ENAMEL		TITLE PANEL, PATCH R.F. SWITCHING	
UNLESS OTHERWISE SPECIFIED DIMENSIONS ARE IN INCHES AND INCLUDE CHEMICALLY APPLIED OR PLATED FINISHES		DATE 6/16/69	FINAL APPROVAL DATE 6/16/69
TOLERANCES		ELECT. DES.	DATE
DECIMALS .X ± .05 .XX ± .01 .XXX ± .005	FRACTIONS ± 1/64 ANGLES ± 0° 30'	MECH. DES.	DATE
SPP-PA-134		SPP-PA-134 A	

QTY./UNIT	MODEL USED ON	ASSY. NO.
DO NOT SCALE		

NOTES

SPP-PA-134 A