

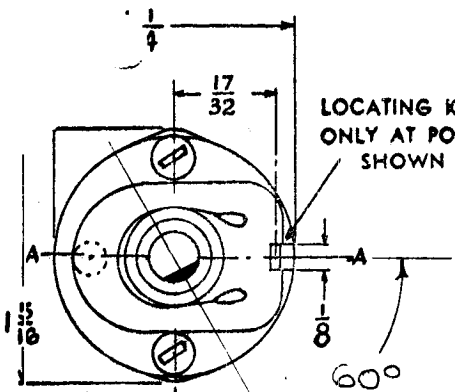
CUSTOMER'S PART NO.

CUSTOMER

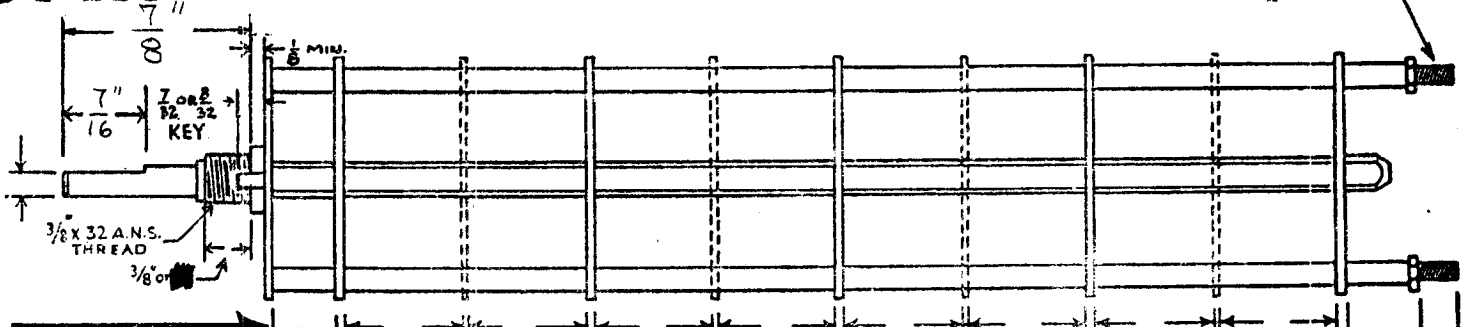
OAK MANUFACTURING CO.  
1260 CLYBORN AVE, CHICAGO 10, ILL.

# OAK TYPE F SWITCH

SW-112  
4-40 THREAD

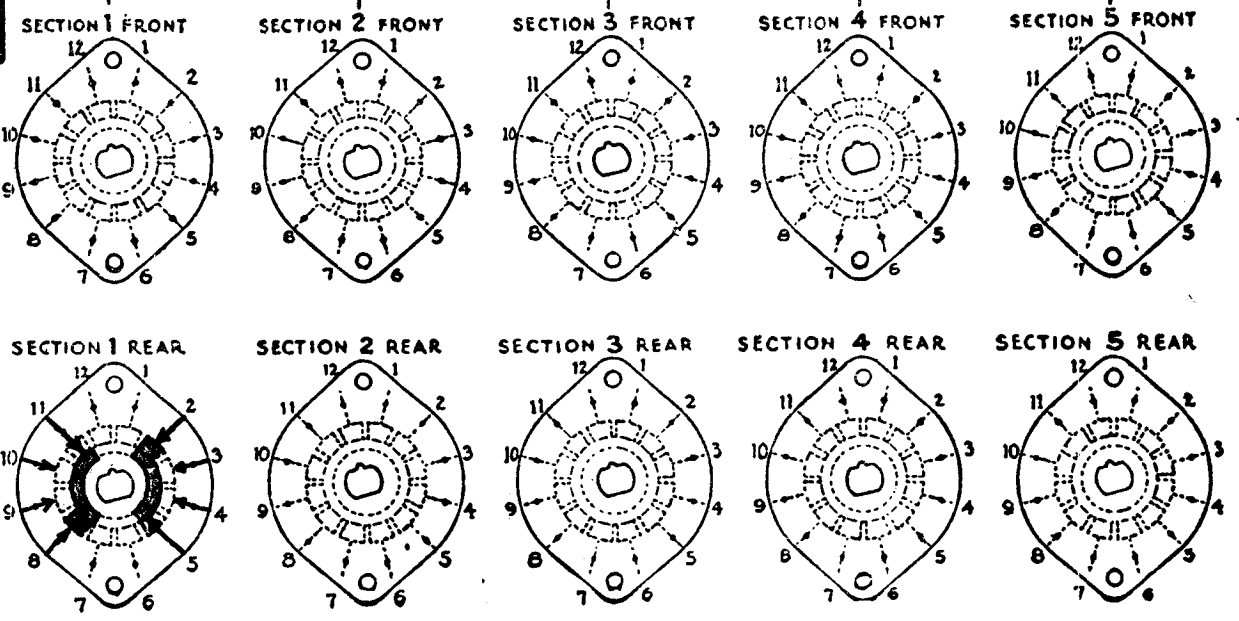
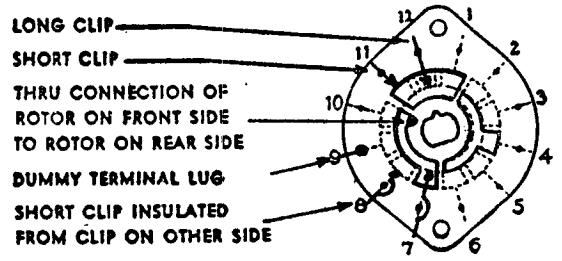


SHOW CUT AWAY PORTION OF FLAT IN BLACK AND GIVE ANGLE TO LINE A-A.  $\pm 3^\circ$   
STANDARD RMA KNURLED AND SLOTTED SHAFT ALSO AVAILABLE



NUMBER OF SECTIONS  $\frac{1}{3}$   
NUMBER OF POSITIONS  $\frac{3}{3}$   
ANGLE OF THROW  $30^\circ$  (30° OR 60°)

### SYMBOLS USED IN MARKING PRINT



CUSTOMER NOTES

OUTLINE ROTOR BLADES AS SHOWN ABOVE WITH SWITCH IN EXTREME COUNTER-CLOCKWISE POSITION

### SPECIFICATIONS

SHORTING TYPE CONTACTS  NON-SHORTING  IF NOT SPECIFIED SHORTING TYPE WILL BE SUPPLIED.  
 INSULATION:  $\frac{1}{16}$ " BAKELITE   $\frac{1}{8}$ " MYCALEX  SPECIFY IMPREGNATION IF REQUIRED.  
 FINISH REQUIREMENTS: COMMERCIAL ; ARMY ; NAVY ; SALT TEST (IF ANY GIVE DETAILS) 200 hr salt spray  
 CONTACTS AND ROTORS: SILVER PLATED BRASS  SOLID SILVER ALLOY ; IF NOT SPECIFIED SILVER PLATED BRASS WILL BE SUPPLIED.  
 MOUNTING HARDWARE: SUPPLY 1  $\frac{3}{8}$ " - 32 NUTS 1/2" ACROSS FLATS; MATERIAL \_\_\_\_\_ PLATING \_\_\_\_\_  
1  $\frac{3}{8}$ " INTERNAL TOOTH LOCKWASHER; MATERIAL \_\_\_\_\_ PLATING \_\_\_\_\_  
 STAMP PART NUMBER SW-112 ON FRONT PLATE, YES  NO

*Order #2842-F1*

*DCW*

SW-112

*supercedes AES010*

DATE 5/8/57

2-12-53

FORM 5-1  

C	1/4 DIM WAS 3/16	6.19.67	182.74	WV	My OP	(CFA)
---	------------------	---------	--------	----	-------	-------