

CUSTOMER'S PART NO. SW-115

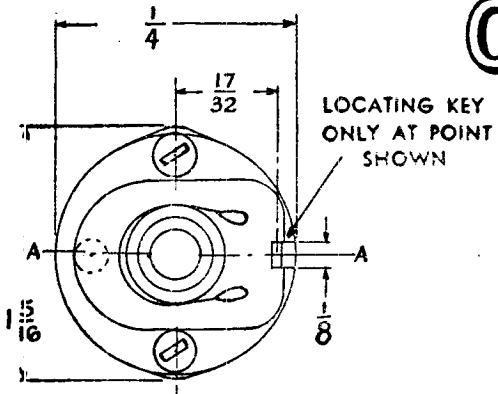
CUSTOMER

OAK MANUFACTURING CO.  
1260 CLYBORN AVE., CHICAGO 10, ILL.

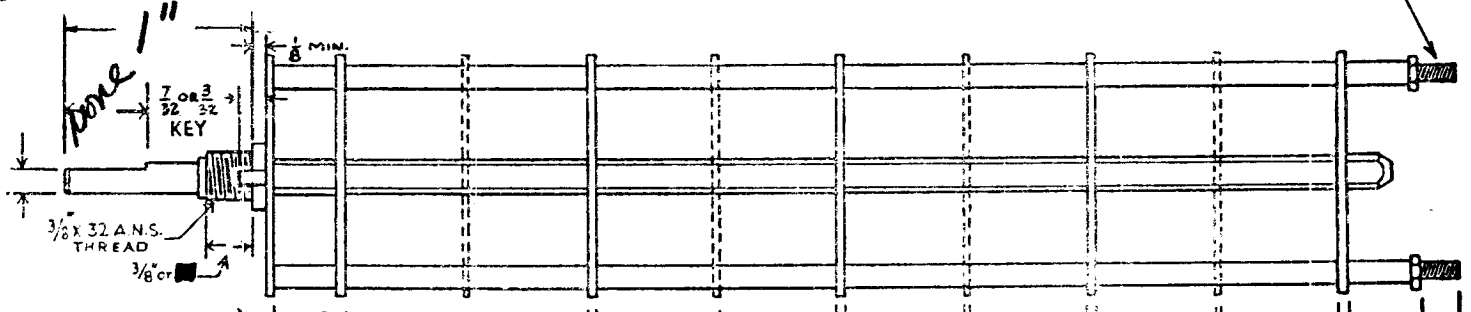
SW-115

# OAK TYPE F SWITCH

4-40 THREAD

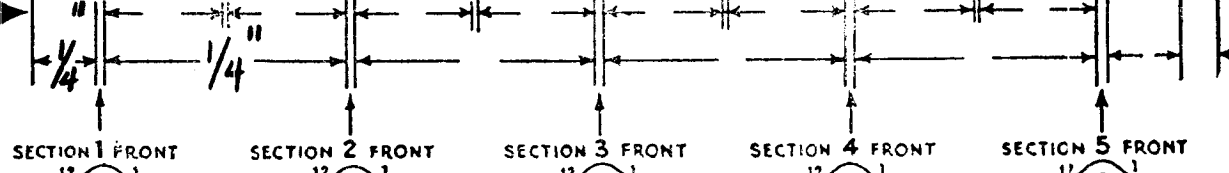


SHOW CUT AWAY PORTION OF FLAT IN BLACK AND GIVE ANGLE TO LINE A-A.  $\pm 3^\circ$   
STANDARD RMA KNURLED AND SLOTTED SHAFT ALSO AVAILABLE

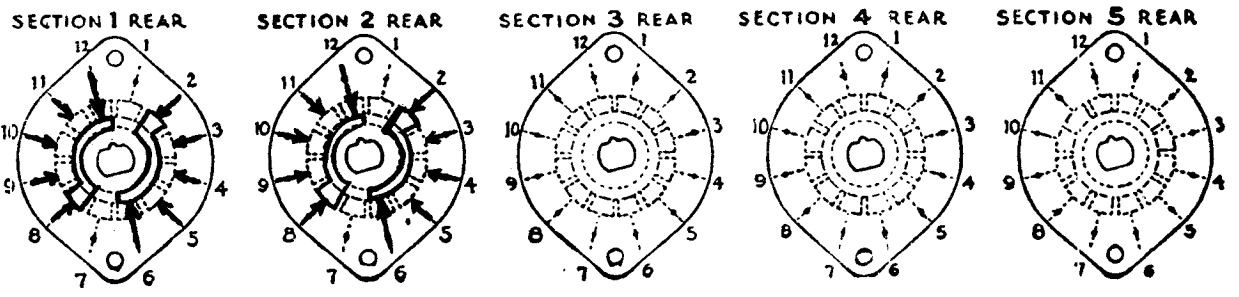
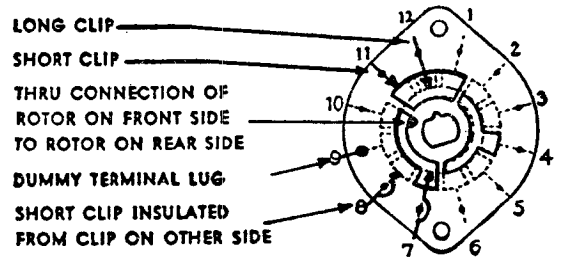


FRONT AND REAR OF SECTIONS VIEWED FROM FRONT OR KNOB END OF SWITCH IN EXTREME COUNTER-CLOCKWISE POSITION

NUMBER OF SECTIONS  $\frac{2}{4}$   
NUMBER OF POSITIONS  $\frac{4}{4}$   
ANGLE OF THROW  $30^\circ$  (30° OR 60°)



### SYMBOLS USED IN MARKING PRINT



OUTLINE ROTOR BLADES AS SHOWN ABOVE WITH SWITCH IN EXTREME COUNTER-CLOCKWISE POSITION

CUSTOMER NOTES

52, DVM

Supersedes AEC 510  
2-12-53

### SPECIFICATIONS

SHORTING TYPE CONTACTS  NON-SHORTING  IF NOT SPECIFIED SHORTING TYPE WILL BE SUPPLIED.  
INSULATION:  $\frac{1}{16}$ " BAKELITE   $\frac{1}{8}$ " MYCALEX  SPECIFY IMPREGNATION IF REQUIRED.  
FINISH REQUIREMENTS: COMMERCIAL ; ARMY ; NAVY ; SALT TEST (IF ANY GIVE DETAILS) 200hr  
CONTACTS AND ROTORS: SILVER PLATED BRASS  SOLID SILVER ALLOY ; IF NOT SPECIFIED SILVER PLATED BRASS WILL BE SUPPLIED.  
MOUNTING HARDWARE: SUPPLY 1  $\frac{3}{8}$ " .32 NUTS 1/2" ACROSS FLATS; MATERIAL BR PLATING N.P.  
1  $\frac{3}{8}$ " INTERNAL TOOTH LOCKWASHER; MATERIAL P.B PLATING N.P.  
STAMP PART NUMBER SW-115 ON FRONT PLATE, YES  NO   
(NUMBER)

SW-115  
DATE 7/5/57