

CUSTOMER'S PART NO. SW-117

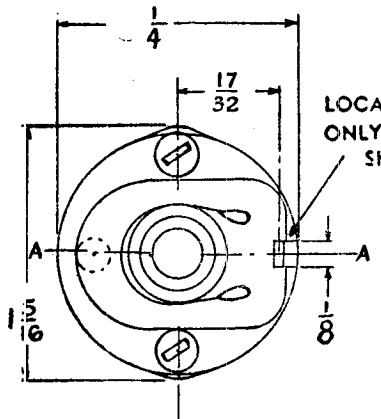
CUSTOMER

OAK MANUFACTURING CO.
1260 CLYBORN AVE., CHICAGO 10, ILL.

OAK TYPE F SWITCH

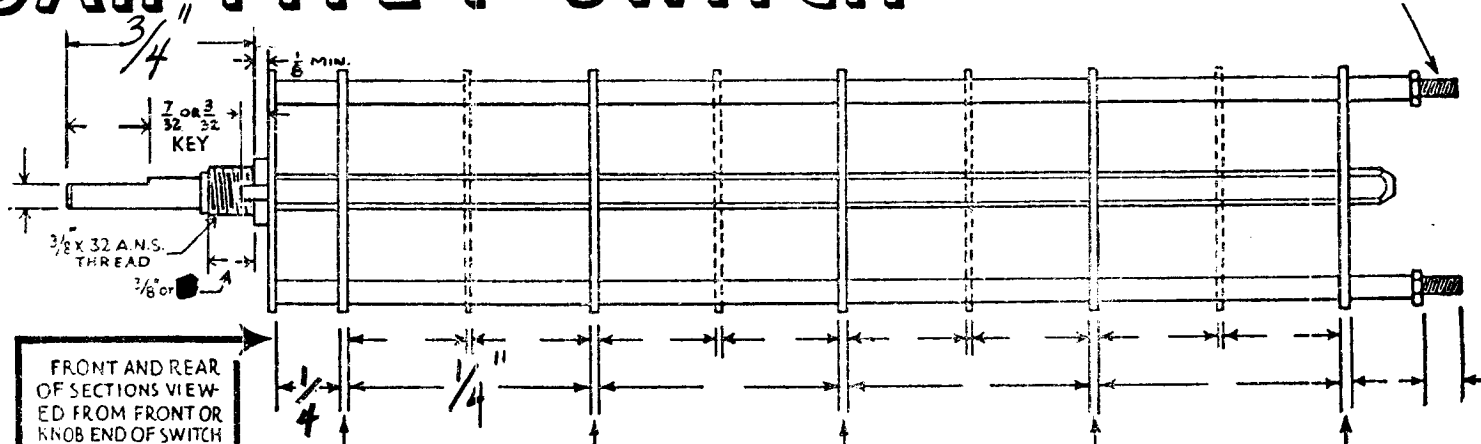
SW-117

4-40 THREAD



LOCATING KEY ONLY AT POINT SHOWN

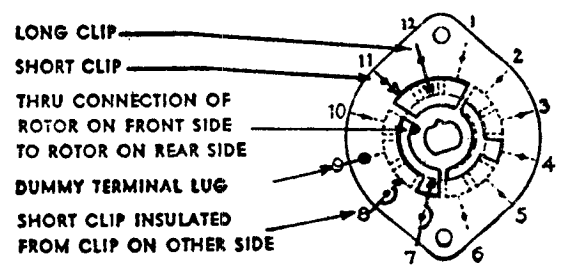
SHOW CUT AWAY PORTION OF FLAT IN BLACK AND GIVE ANGLE TO LINE A-A. $\pm 3^\circ$ STANDARD RMA KNURLED AND SLOTTED SHAFT ALSO AVAILABLE



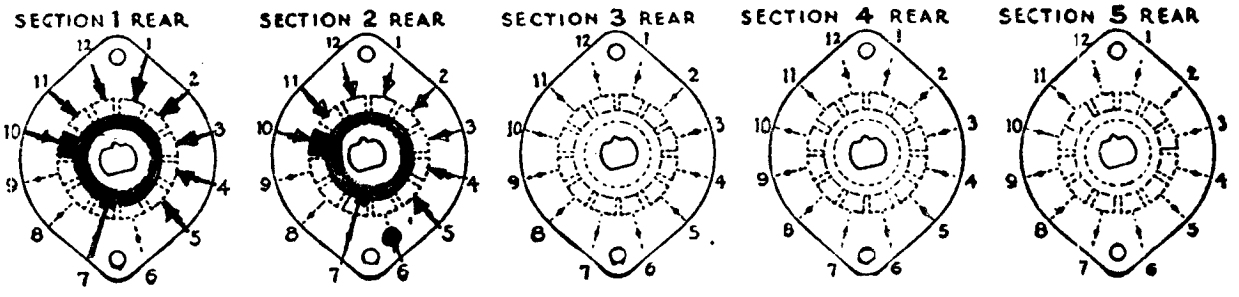
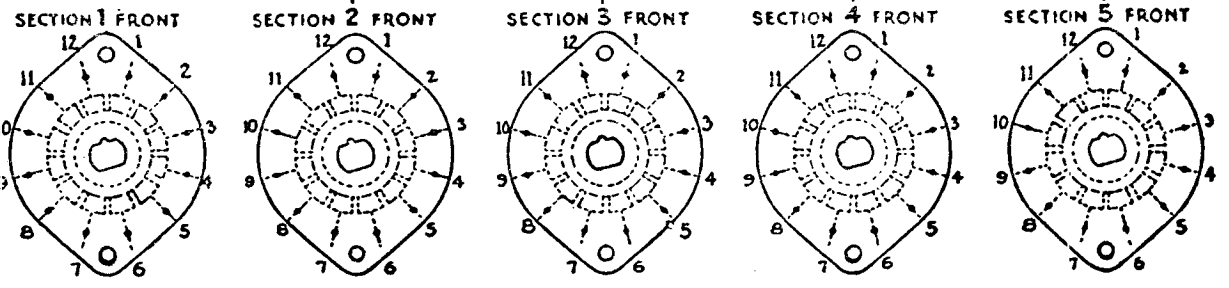
FRONT AND REAR OF SECTIONS VIEWED FROM FRONT OR KNOB END OF SWITCH IN EXTREME COUNTER-CLOCKWISE POSITION

NUMBER OF SECTIONS $\frac{2}{8}$
 NUMBER OF POSITIONS $\frac{2}{8}$
 ANGLE OF THROW 30° (30° OR 60°)

SYMBOLS USED IN MARKING PRINT



OUTLINE ROTOR BLADES AS SHOWN ABOVE WITH SWITCH IN EXTREME COUNTER-CLOCKWISE POSITION



CUSTOMER NOTES

SH, VAK-2

Supersedes AESO?
2-12-53

SW-117

DATE 7/30/51

SPECIFICATIONS

SHORTING TYPE CONTACTS NON-SHORTING IF NOT SPECIFIED SHORTING TYPE WILL BE SUPPLIED.
 INSULATION: $\frac{1}{16}$ BAKELITE $\frac{1}{8}$ MYCALEX SPECIFY IMPREGNATION IF REQUIRED.
 FINISH REQUIREMENTS: COMMERCIAL ; ARMY ; NAVY ; SALT TEST (IF ANY GIVE DETAILS) 200hr
 CONTACTS AND ROTORS: SILVER PLATED BRASS ; SOLID SILVER ALLOY ; IF NOT SPECIFIED SILVER PLATED BRASS WILL BE SUPPLIED.
 MOUNTING HARDWARE: SUPPLY 1 $\frac{3}{8}$ " - 32 NUTS 1/2 ACROSS FLATS; MATERIAL BR PLATING N.P.
1 $\frac{3}{8}$ " INTERNAL TOOTH LOCKWASHER; MATERIAL P.B. PLATING N.P.
 STAMP PART NUMBER SW-117 ON FRONT PLATE, YES NO
 (NUMBER)