

IF IT IS FOUND DESIRABLE TO CHANGE ANY TOLERANCE OR OTHER DETAIL SPECIFIED ON THIS DRAWING NOTIFY THE PURCHASER PROMPTLY.

SW-141 B

MAXIMUM ALLOWABLE TOLERANCES HAVE BEEN DETERMINED AND DEVIATIONS WILL BE CAUSE FOR REJECTION. REMOVE ALL BURRS AND SHARP EDGES

REQ. PER UNIT

USED ON

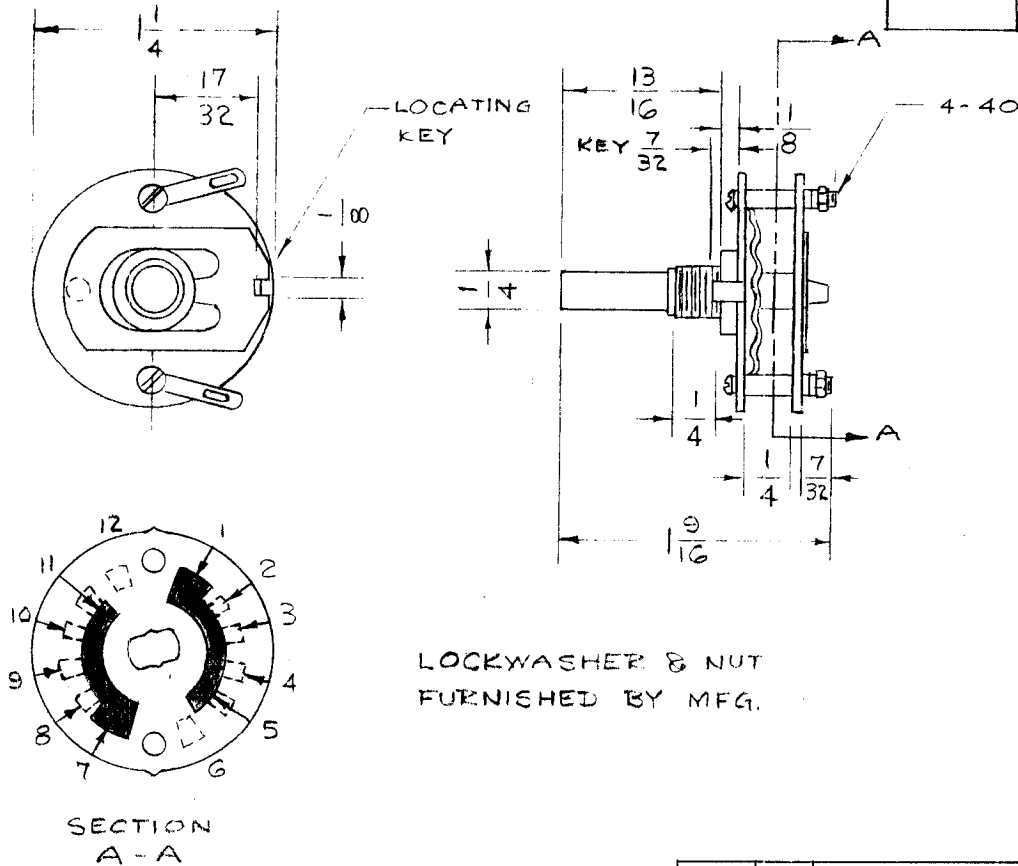
MODEL

PROJECT NO.

ASS'Y. NO.

DATE

9-4-53



NUMBER OF SECTIONS - 1
 NUMBER OF POSITIONS - 4
 ANGLE OF THROW - 30°
 SHAFT - ROUND
 NON SHORTING
 INSULATION - BAKELITE
 CONTACTS & ROTOR - BRASS-SILVER PLATE
 MUST PASS 50 HOUR SALT SPRAY TEST
 STAMP SW-141 ON FRONT PLATE.
 METAL PARTS EXCEPT TERMINALS
 AND CONTACTS SHALL BE CHROMIUM
 DIPPED AND CHROMIUM PLATED

B	2	REF. DELETED	4/4/56	2	JAW	CS	UD
A	1	PICTORIAL AND SPEC. ADDED	3/27/56	1	PB	CS	UD
ISSUE	ITEM	CHANGED FROM	DATE	CN. NO.	DRAFTS	CHECKER	ENG. APP.

TOLERANCES		SCALE	#
ALL OTHERS:	DEC. DIM. ± FRAC. DIM. ± ANGULAR DIM. ±	DRILL, PUNCH, COMMERCIAL STOCK SIZES AND MANUFACTURERS TOLERANCES ARE NOT INCLUDED.	

REQ.	ITEM	PART NO.	DESCRIPTION	SYMBOL
STOCK SIZE			THE TECHNICAL MATERIEL CORP. MAMARONECK. NEW YORK	
MATERIAL			SWITCH, ROTARY	
WEIGHT PER PC.			C.D.D. 1-12-53	
TYPE & TEMPER			DRAWN	
HEAT TREAT. SPEC.			ELEC. DES. APP.	
FINISH & SPEC. NO.			MECH. DES. APP.	
			CHECKED	
			FINAL APPROVAL	
			SW-141 B	