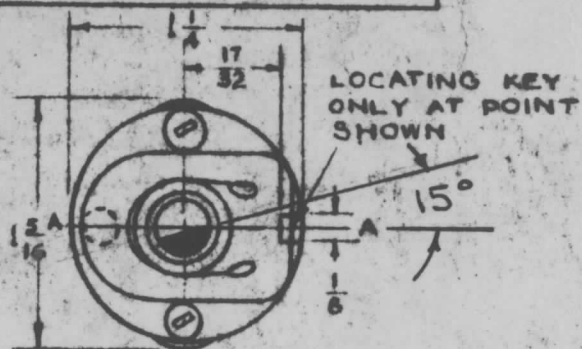


IF IT IS FOUND DESIRABLE TO CHANGE ANY TOLERANCE OR OTHER DETAIL SPECIFIED ON THIS DRAWING NOTIFY THE PURCHASER PROMPTLY.

MAXIMUM ALLOWABLE TOLERANCES HAVE BEEN DETERMINED AND DEVIATIONS WILL BE CAUSE FOR REJECTION. REMOVE ALL BURRS AND SHARP EDGES

SW-150 C

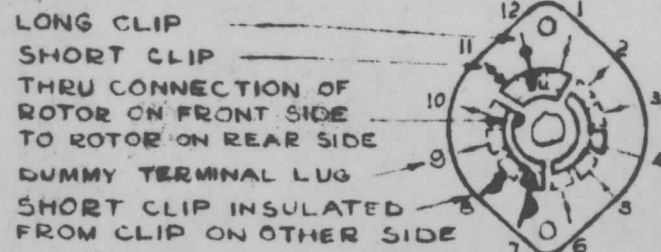


LOCATING KEY ONLY AT POINT SHOWN

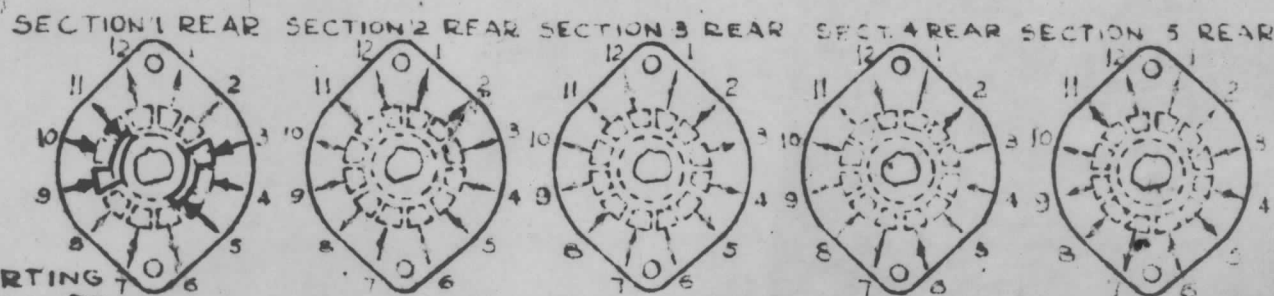
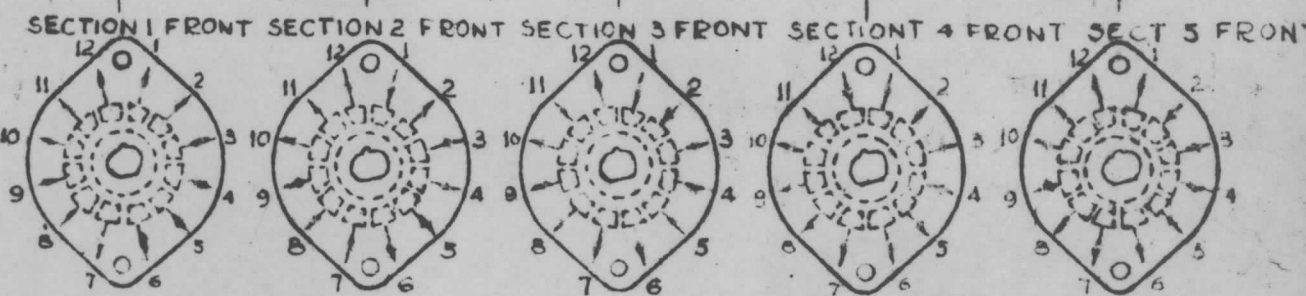
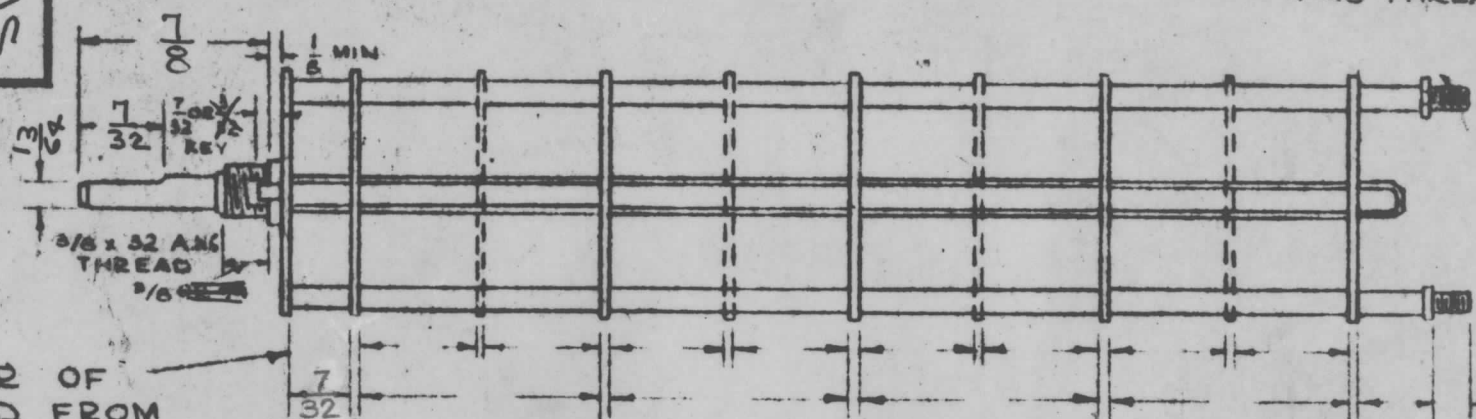
SHOW CUT AWAY PORTION OF FLAT IN BLACK AND GIVE ANGLE TO LINE A-A. 3° STANDARD BMA KNURLED AND SLOTTED SHAFT ALSO AVAILABLE

NUMBER OF SECTIONS $\frac{1}{2}$
 NUMBER OF POSITIONS $\frac{2}{1}$
 ANGLE OF THROW 30° (30° OR 60°)

SYMBOLS USED IN MARKING PRINT



FRONT AND REAR OF SECTIONS VIEWED FROM FRONT OR KNOB END OF SWITCH IN EXTREME COUNTER-CLOCKWISE POSITION.



OUTLINE ROTOR BLADES AS SHOWN AT LEFT WITH SWITCH IN EXTREME COUNTER-CLOCKWISE POSITION

SPECIFICATIONS

SHORTING TYPE CONTACTS NON-SHORTING
 IF NOT SPECIFIED SHORTING TYPE WILL BE SUPPLIED. INSULATION: 1/16 BAKELITE 1/16 MY CALEX
 SPECIFY IMPREGNATION IF REQUIRED
 FINISH REQUIREMENTS: COMMERCIAL ; ARMY ; NAVY ; SALT TEST (IF ANY GIVE DETAILS) 200 HRS.
 CONTACTS AND ROTORS: SILVER PLATED
 BRASS ; SOLID SILVER ALLOY ; IF NOT SPECIFIED SILVER PLATED BRASS WILL BE SUPPLIED.
 MOUNTING HARDWARE: SUPPLY 1 3/8"-32 NUTS
 1/2" ACROSS FLATS: MATERIAL BRASS
 PLATING NICKEL 3/8" INTERNAL TOOTH LOCKWASHER
 MATERIAL BRASS PLATING NICKEL
 STAMP PART NUMBER SW-150 ON FRONT PLATE. YES NO

REF: OAK MFG. CO. #64330 FLX

REQ.	ITEM	PART NO.	DESCRIPTION	SYMBOL
THE TECHNICAL MATERIEL CORP. MAMARONECK, NEW YORK.				
SWITCH, ROTARY				
STOCK SIZE				
MATERIAL		WEIGHT PER PC.		
TYPE & TEMPER		DRAWN: f. A. J. J. 8/16/54 ELEC. DES. APP. A. J. J. MECH. DES. APP. W. J. C.		
HEAT TREAT. SPEC.		CHECKED: C. S. D. 8/16/54 FINAL APPROVAL: A. J. J.		
FINISH & SPEC. NO.		SW-150 C		

C 1	ON #1 SECTION, DIM 7/32 WAS 3/16	520-63	9017				
1	Redrawn - 15° WAS 85°	8/16/54	1				
ISSUE	ITEM	CHANGED FROM	DATE	CH. NO.	DRAFTS	CHECKER	ENG. APP.
TOLERANCES		SCALE:					
ALL OTHERS	DEC. DIM. ± FRAC. DIM. ± ANGULAR DIM. ±	DRILL, PUNCH, COMMERCIAL STOCK SIZES AND MANUFACTURERS TOLERANCES ARE NOT INCLUDED.					

1	PMO	285	8/16/54
REQ. PER UNIT	MODEL	PROJECT NO.	DATE
		ASSY. NO.	
		USED ON	