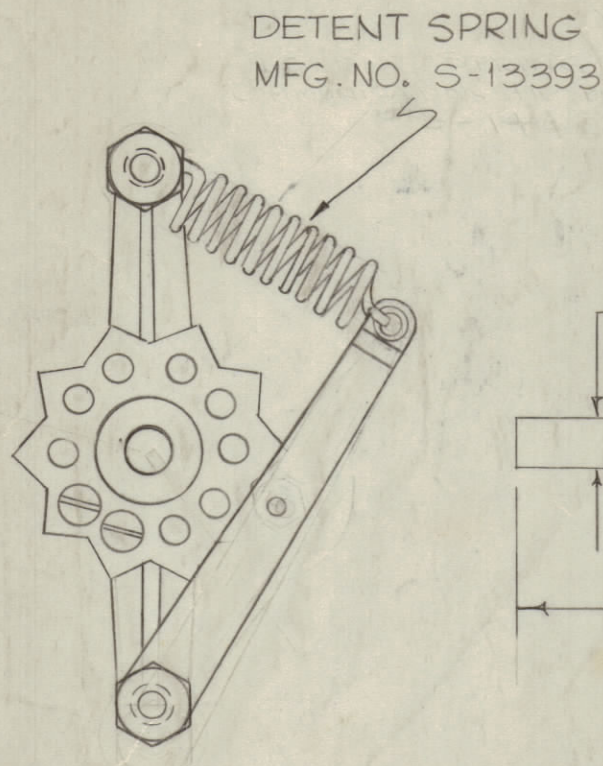


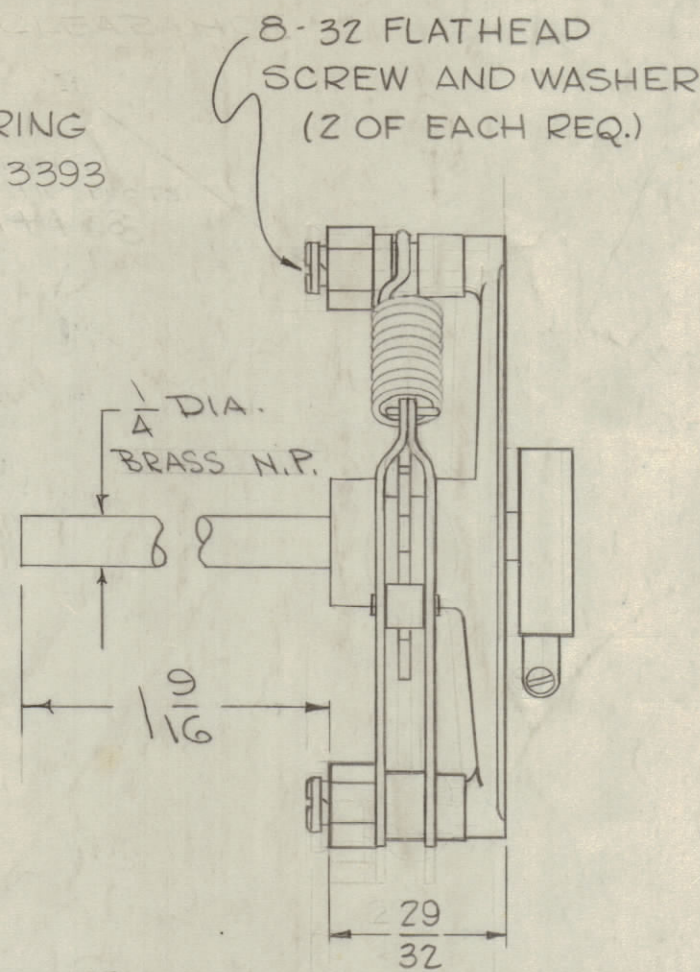
IF IT IS FOUND DESIRABLE TO CHANGE ANY TOLERANCE OR OTHER DETAIL SPECIFIED ON THIS DRAWING NOTIFY THE PURCHASER PROMPTLY.

MAXIMUM ALLOWABLE TOLERANCES HAVE BEEN DETERMINED AND DEVIATIONS WILL BE CAUSE FOR REJECTION. REMOVE ALL BURRS AND SHARP EDGES



DETENT SPRING  
MFG. NO. S-13393

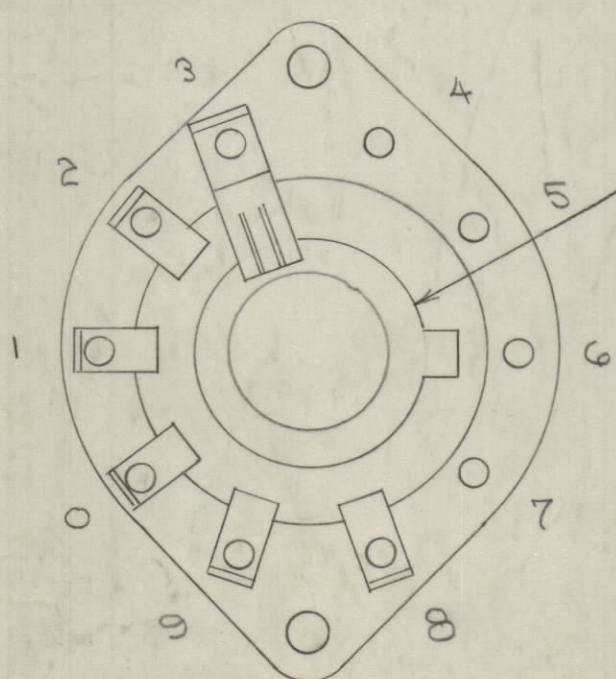
36° DETENT  
SW-165-1



8-32 FLATHEAD  
SCREW AND WASHER  
(2 OF EACH REQ.)

1/4 DIA.  
BRASS N.P.

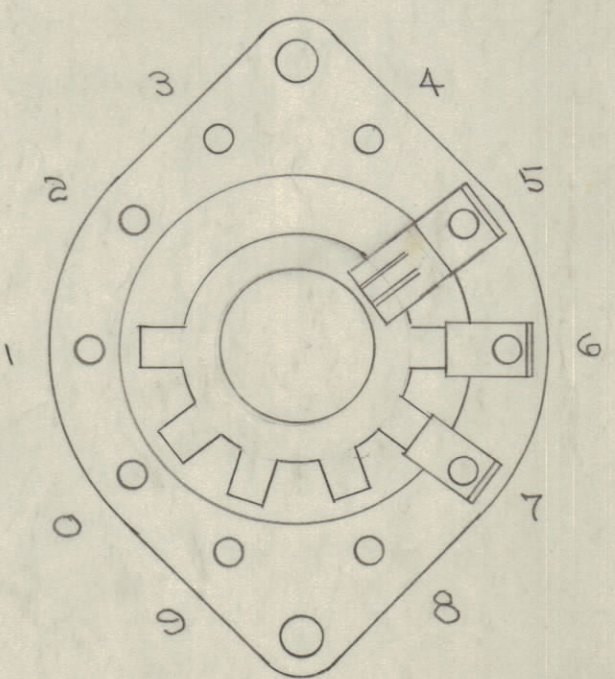
WAFER & CONTACT WHEEL DETAIL.  
(SWITCH SHOWN IN EXTREME COUNTER-  
CLOCKWISE POSITION)  
REAR OF WAFERS SHOWN



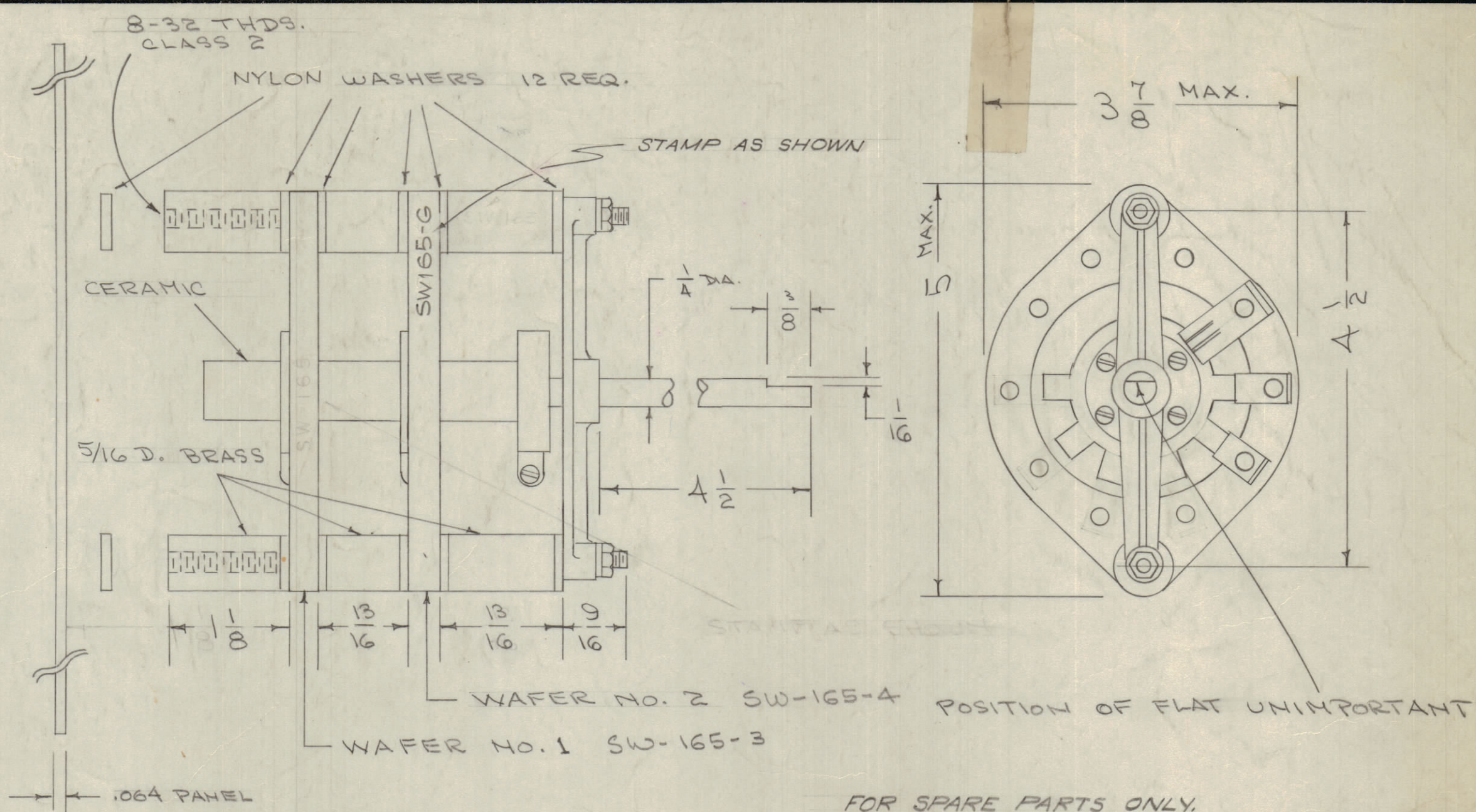
WAFER NO. 1  
SW-165-3

"A" ROTOR  
SW165-6

ROTOR & STEATITE  
SHAFT. SW-165-5



WAFER NO. 2  
SW-165-4



WAFER SECTION SW-165-2

FOR SPARE PARTS ONLY.

TMC NO.	DESIGNATION
SW-165-1	DETENT SECTION
SW-165-2	WAFER SECTION
SW-165-3	WAFER SECTION NO.1
SW-165-4	WAFER SECTION NO.2
SW-165-5	ROTOR & STEATITE SEC.
SW-165-6	"A" ROTOR

SW-165 H

NOTE:  
DETENT SECTION SW-165-1 AND  
WAFER SECTION SW-165-2 TO BE  
ASSEMBLED AS SHOWN.  
(DETENT & SHAFT MUST BE PINNED  
SECURELY.)  
DETENT SECTION TO BE JOINED  
TO WAFER SECTION BY T.M.C.  
THRU .064 PANEL AS SHOWN.

30 AMP MAX. CURRENT CARRYING CAPACITY  
13,000 V. PEAK MIN. FLASHOVER AT 60 CPS

NOTICE TO PERSONS RECEIVING THIS DRAWING

THE TECHNICAL MATERIEL CORPORATION claims  
proprietary right in the material disclosed hereon.  
This drawing is issued in confidence for engineering  
information only and may not be reproduced or used  
to manufacture anything shown hereon without per-  
mission from THE TECHNICAL MATERIEL CORPORA-  
TION to the user. This drawing is loaned for mutual  
assistance and is subject to recall at any time.

Property of:  
THE TECHNICAL MATERIEL CORPORATION  
MAMARONECK, NEW YORK

ISSUE	ITEM	CHANGED FROM	DATE	CN. NO.	DRAFTS	CHECKER	ENG. APP.
H	1	"A" ROTOR SW165-6 ADDED	12/26/61	15315	H.V.	[Signature]	[Signature]
G	1	Detent Portion Changed	8-11-60	2749	J.C.B.	[Signature]	[Signature]
F	1	TMC NO. & DESIGNATION ADDED	7-20-57	6	EC.	[Signature]	[Signature]
E	2	REDRAWN	9/28/50	5	CDD	[Signature]	[Signature]
E	1	COMPLETE REVISION					

TOLERANCES		SCALE: 3401-113 (MODEL 88)
ALL OTHERS	DEC. DIM. ± FRAC. DIM. ± ANGULAR DIM. ±	DRILL, PUNCH, COMMERCIAL STOCK SIZES AND MANUFACTURERS TOLERANCES ARE NOT INCLUDED.

REQ PER UNIT	MODEL	PROJECT NO.	ASS'Y. NO.	DATE
1 EA	RTF-2	P/A		11-20-58
1 EA	RTF			9-28-56

REQ. ITEM	PART NO.	DESCRIPTION	SYMBOL
<b>THE TECHNICAL MATERIEL CORP.</b> MAMARONECK, NEW YORK			
STOCK SIZE		SWITCH, PA BAND	
MATERIAL	WEIGHT PER PC.	P/A GPT-750	
TYPE & TEMPER		DRAWN	ELEC. DES. APP. MECH. DES. APP.
HEAT TREAT. SPEC.		CHECKED	FINAL APPROVAL
FINISH & SPEC. NO.		SW-165 H	