

IF IT IS FOUND DESIRABLE TO CHANGE ANY TOLERANCE OR OTHER DETAIL SPECIFIED ON THIS DRAWING NOTIFY THE PURCHASER PROMPTLY.					DIMENSIONS IN INCHES UNLESS OTHERWISE SPECIFIED		
MAXIMUM ALLOWABLE TOLERANCES HAVE BEEN DETERMINED AND DEVIATIONS WILL BE CAUSE FOR REJECTION REMOVE ALL BURRS AND SHARP EDGES							
ISSUE	ITEM	CHANGED FROM	DATE	CN NO	DRAFTS	CHECKER	ENG APP
φ		PROD RELEASE	Aug 12 '71		AR	MA	
A		REV PER CEMM	26 Jun 72	1188	C.C.	4B	

## SPECIFICATIONS

### MECHANICAL

WAFER MATERIAL:- PHENOLIC .062 THK  
 NUMBER OF WAFERS:- 2  
 NUMBER OF POSITIONS:- 12 (NO STOP)  
 ANGLE OF THROW:- 30°  
 CONTACT MATERIAL:- SILVER PLATED BRASS  
 OPERATING TEMPERATURE:- -25°C TO +85°C

### SPECIAL REQUIREMENTS

### ELECTRICAL

CURRENT CARRYING CAPACITY:- 5 AMPERES  
 DIELECTRIC STRENGTH:-     

### SPECIAL REQUIREMENTS

CONTACTS TO BE STANDARD - SHORTING

2. SWITCH TO BE SUPPLIED WITH MOUNTING HARDWARE

1. PERMANENTLY MARK TMC PART NO. "SW10067" ON SWITCH MOUNTING PLATE

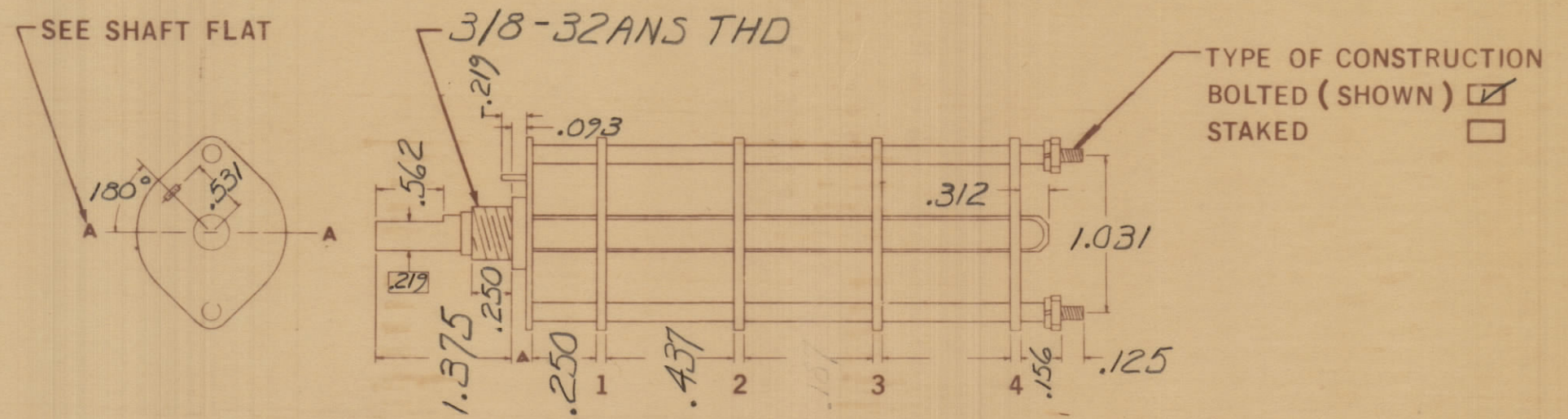
## NOTES

TOLERANCES		SCALE
DEC DIM	.015	DRILL, PUNCH, COMMERCIAL STOCK SIZES AND MANUFACTURERS TOLERANCES ARE NOT INCLUDED
FRAC DIM	64	
ANGULAR DIM	0° 30'	

MANUFACTURER - S401-13  
 TYPE OR PART NO. - TYPE 'F'

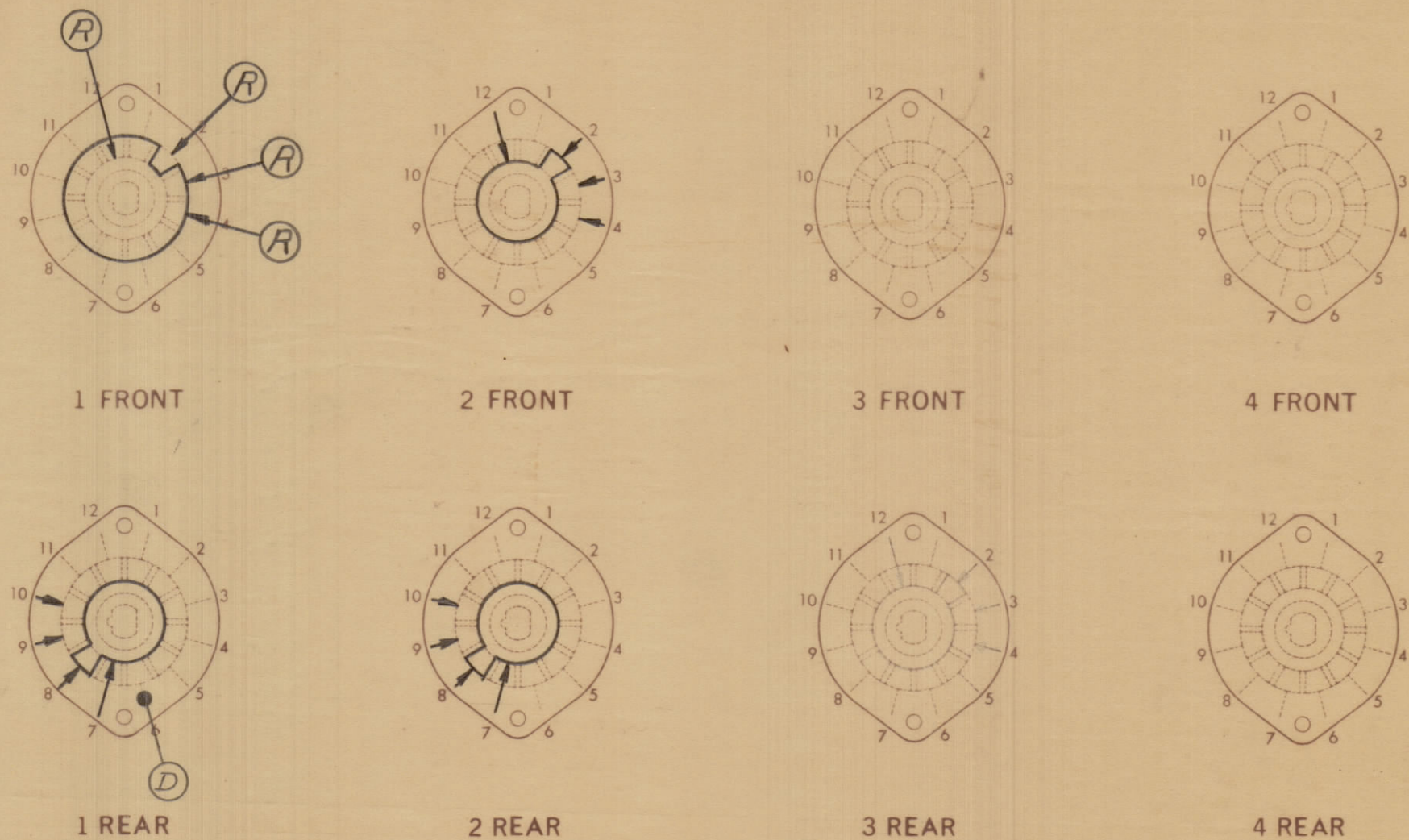
## PHYSICAL CHARACTERISTICS

4 WAFERS SHOWN  
 WAFERS MAY BE ADDED (SEE SHEET 2)



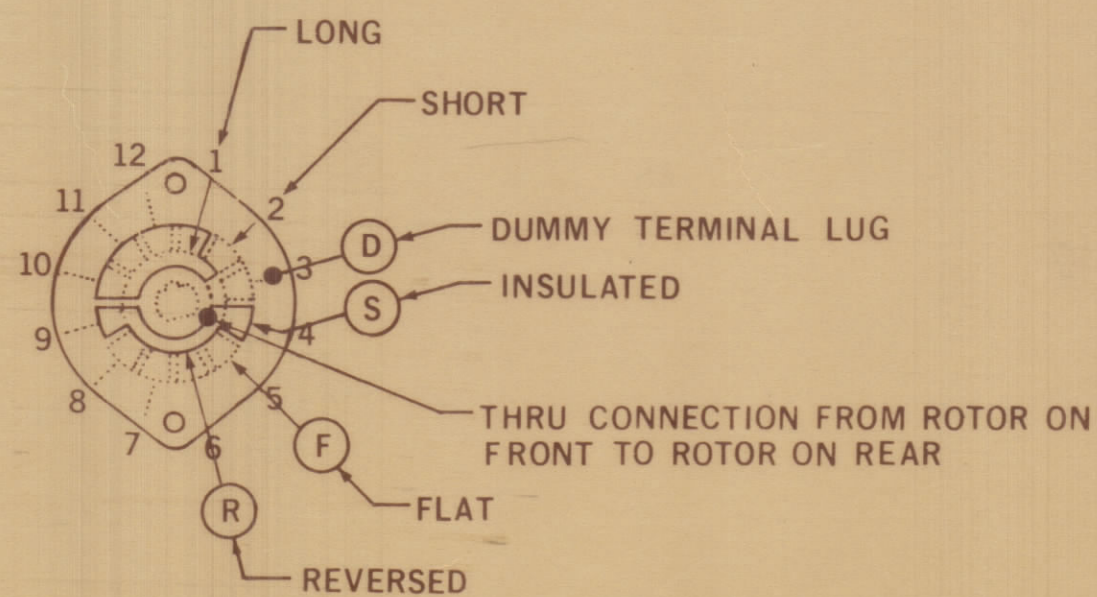
## MARKING PRINT

FRONT & REAR SECTIONS VIEWED FROM FRONT OR KNOB END OF SWITCH IN EXTREME COUNTER-CLOCKWISE POSITION (FOR ADDITIONAL WAFERS SEE SHEET 2)



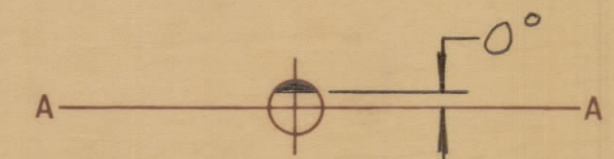
SW10067 A

## CLIP DESIGNATIONS



## SHAFT FLAT (IF REQ'D)

SHOW CUT-AWAY PORTION OF SHAFT IN BLACK & SHOW ANGULAR DIMENSION FROM DATUM A-A WHEN SHAFT IS IN EXTREME COUNTER-CLOCKWISE POSITION



STOCK SIZE		TMC (Canada) LIMITED OTTAWA ONTARIO	
MATERIAL		SWITCH, ROTARY	
WEIGHT PER PC		12 POS 'N	
TYPE & TEMPER		WILLIAMS	MA
HEAT TREAT SPEC		DRN	APP
FINISH & SPEC NO		CHEK'D	APP

MMX-3 110/71 5 MAR 71

SW10067 A