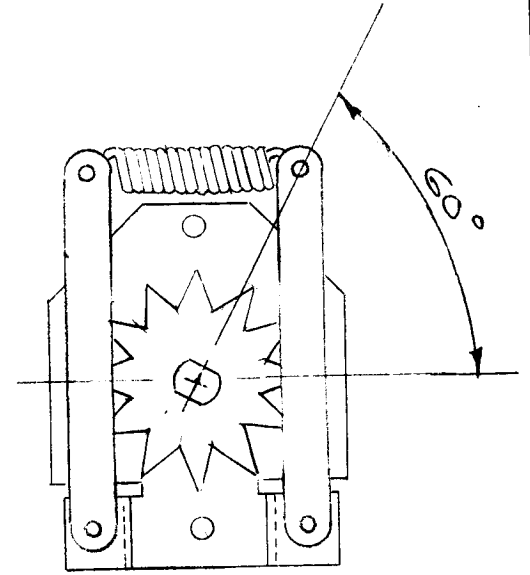
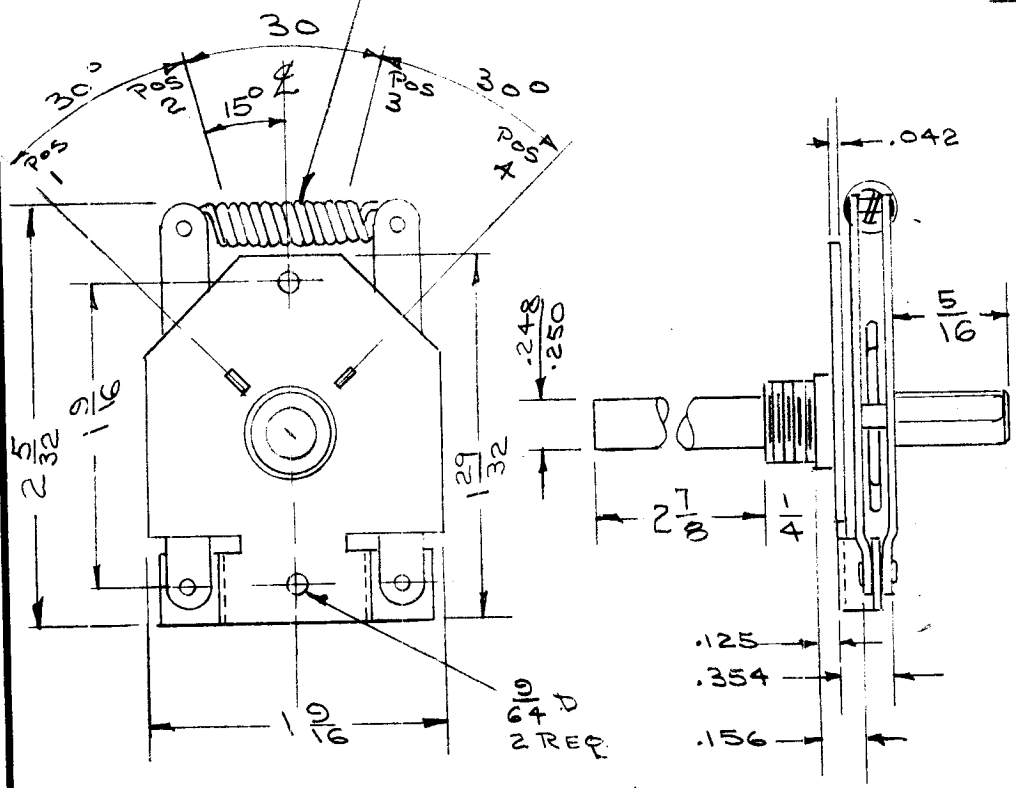


NOTES:  
CENTRALAB SPRING  
NO. P-4759

REQ. PER UNIT	USED ON		
	MODEL	ASS'Y. NO.	DATE
1	SBE-1	A-1396	
1	SBE-2	A-1516	5-5-58
1	SBE-3	AP-100	11-30-59

SW-201 E



NOTE  
WHEN INDEX IS IN POSITION 1  
FLAT ON REAR SHAFT MUST  
BE IN POS. SHOWN

NOTE  
POSITIONS - 4  
STOPS - 30° INDEX

REF: CENTRALAB TYPE G INDEX

E	1	CENTRALAB SPRING # WAS P5185	4/30/58	5	JAE	1/2/6	JAE
D	1	CENTRALAB SPRING No. Added	4/3/58	4	JAE		JAE
C	1	2 7/8 Shaft Length was 3/4	12/2/57	3	KB	JAE	QPB
B	1	Shaft length was 3 7/8 Front - 1/2 Rear	8/29/57	2	KB	2B	QPB
A	1	Flat on Rear Shaft was 45°	7/15/57	1	JAE	2B	QPB
ISSUE	ITEM	CHANGED FROM	DATE	CH. NO.	DRAFTS	CHECKER	ENG. APP.

REQ. ITEM	PART NO.	DESCRIPTION	SYMBOL
		THE TECHNICAL MATERIEL CORP. MAMARONECK, NEW YORK	
		STOCK SIZE	
		SWITCH, INDEX	
		MODEL SBE	
		MATERIAL	
			RWB
			QPB
		TYPE & TEMPER	HEAT TREAT. SPEC.
		FINISH & SPEC. NO.	
		DRAWN	CHECKED
		ELEC. DES. APP.	MECH. DES. APP.
			FINAL APPROVAL

TOLERANCES  
DEC. DIM. ±  
FRAC. DIM. ±  
ANGULAR DIM. ±

SCALE:  
MAXIMUM ALLOWABLE TOLERANCES HAVE BEEN DETERMINED AND ANY DEVIATIONS WILL BE CAUSE FOR REJECTION.  
REMOVE ALL BURRS AND SHARP EDGES

S105 CADMIUM PLATE  
ELEC. DES. APP. MECH. DES. APP.  
SW-201 E