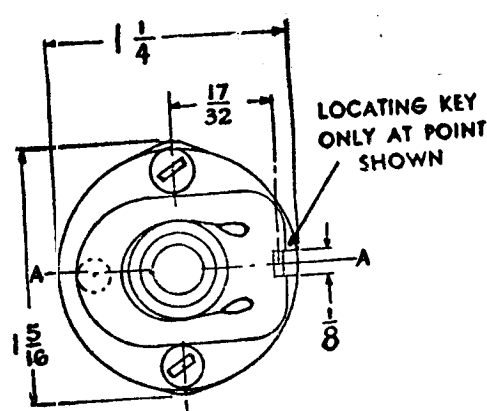
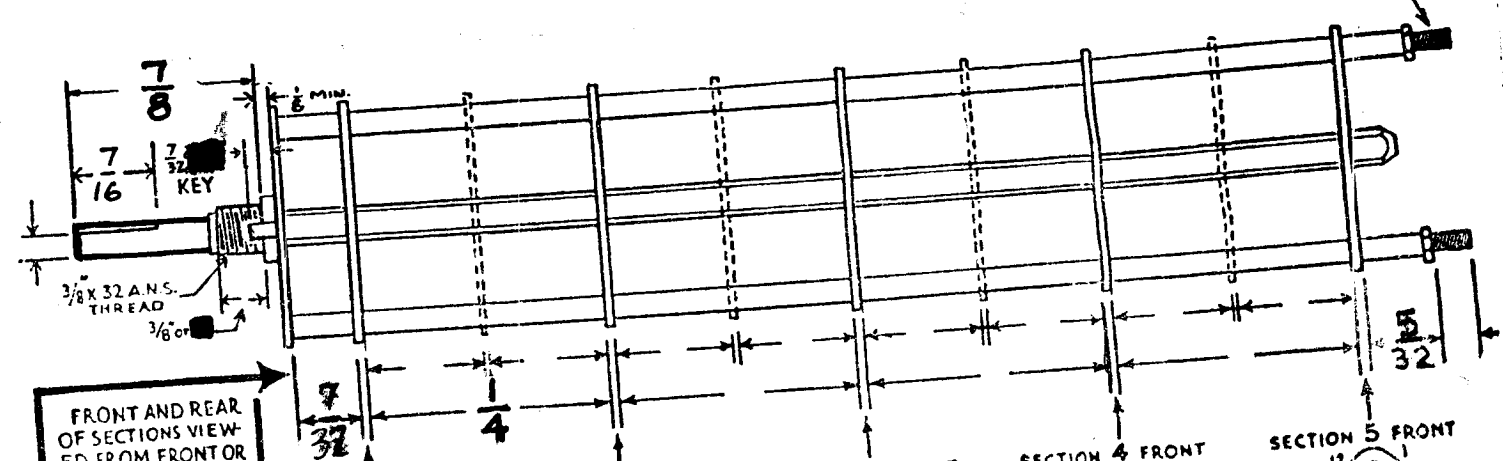


CUSTOMER'S PART NO. SW-217

CUSTOMER

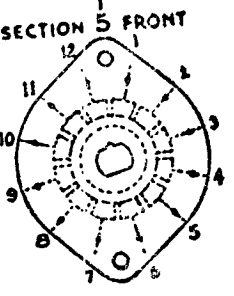
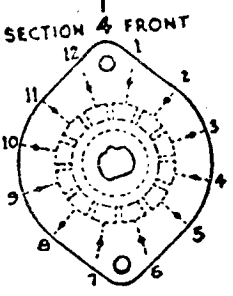
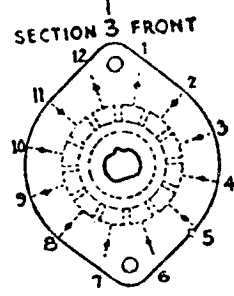
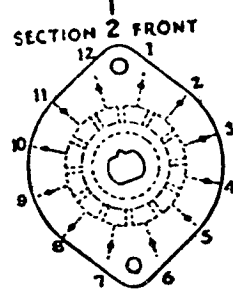
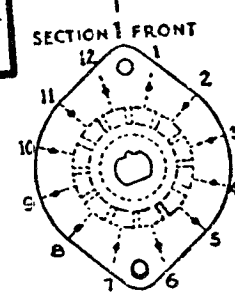


SHOW CUT AWAY PORTION OF FLAT IN BLACK AND GIVE ANGLE TO LINE A-A.  $\pm 3^\circ$  STANDARD RMA KNURLED AND SLOTTED SHAFT ALSO AVAILABLE

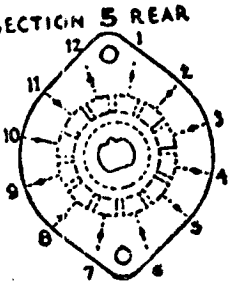
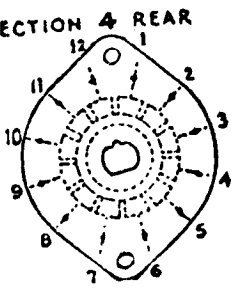
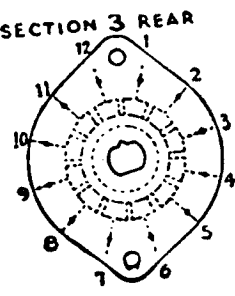
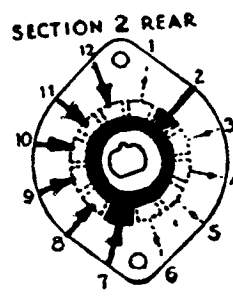
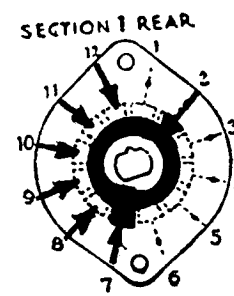
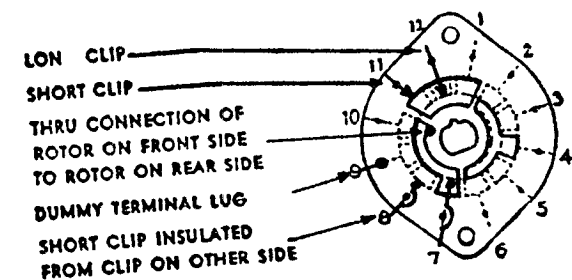


FRONT AND REAR OF SECTIONS VIEWED FROM FRONT OR KNOB END OF SWITCH IN EXTREME COUNTER-CLOCKWISE POSITION

NUMBER OF SECTIONS  $\frac{2}{6}$   
 NUMBER OF POSITIONS  $\frac{2}{6}$   
 ANGLE OF THROW  $30^\circ$  ( $30^\circ$ )



SYMBOLS USED IN MARKING PRINT



OUTLINE ROTOR BLADES AS SHOWN ABOVE WITH SWITCH IN EXTREME COUNTER-CLOCKWISE POSITION

CUSTOMER NOTES

USED ON PAL-350  
 THE TECHNICAL MATERIEL CORPORATION

SWITCH, ROTARY, METE

DRAWN 16 9/16/58	APP'D.
CHK'D JAL	ASJ
	SW-217

**SPECIFICATIONS**  
 SHORTING TYPE CONTACTS  NON-SHORTING  IF NOT SPECIFIED SHORTING TYPE WILL BE SUPPLIED.  
 INSULATION:  $\frac{1}{16}$  BAKELITE  MYCALEX  SPECIFY IMPREGNATION IF REQUIRED.  
 FINISH REQUIREMENTS: MILITARY  ARMY  NAVY ; SALT TEST (IF ANY GIVE DETAILS) 200 HR  
 CONTACTS AND ROTORS: SILVER PLATED BRASS  SOLID SILVER ALLOY ; IF NOT SPECIFIED SILVER PLATED BRASS WILL BE SUPPLIED.  
 MOUNTING HARDWARE: SUPPLY 1  $\frac{3}{8}$ " - 32 NUTS  $\frac{1}{2}$ " ACROSS FLATS; MATERIAL STAINLESS STEEL PLATING  
 1  $\frac{3}{8}$ " INTERNAL TOOTH LOCKWASHER; MATERIAL STAIN PLATIN STEEL  
 STAMP PART NUMBER SW-217-C ON FRONT PLATE YES  NO

