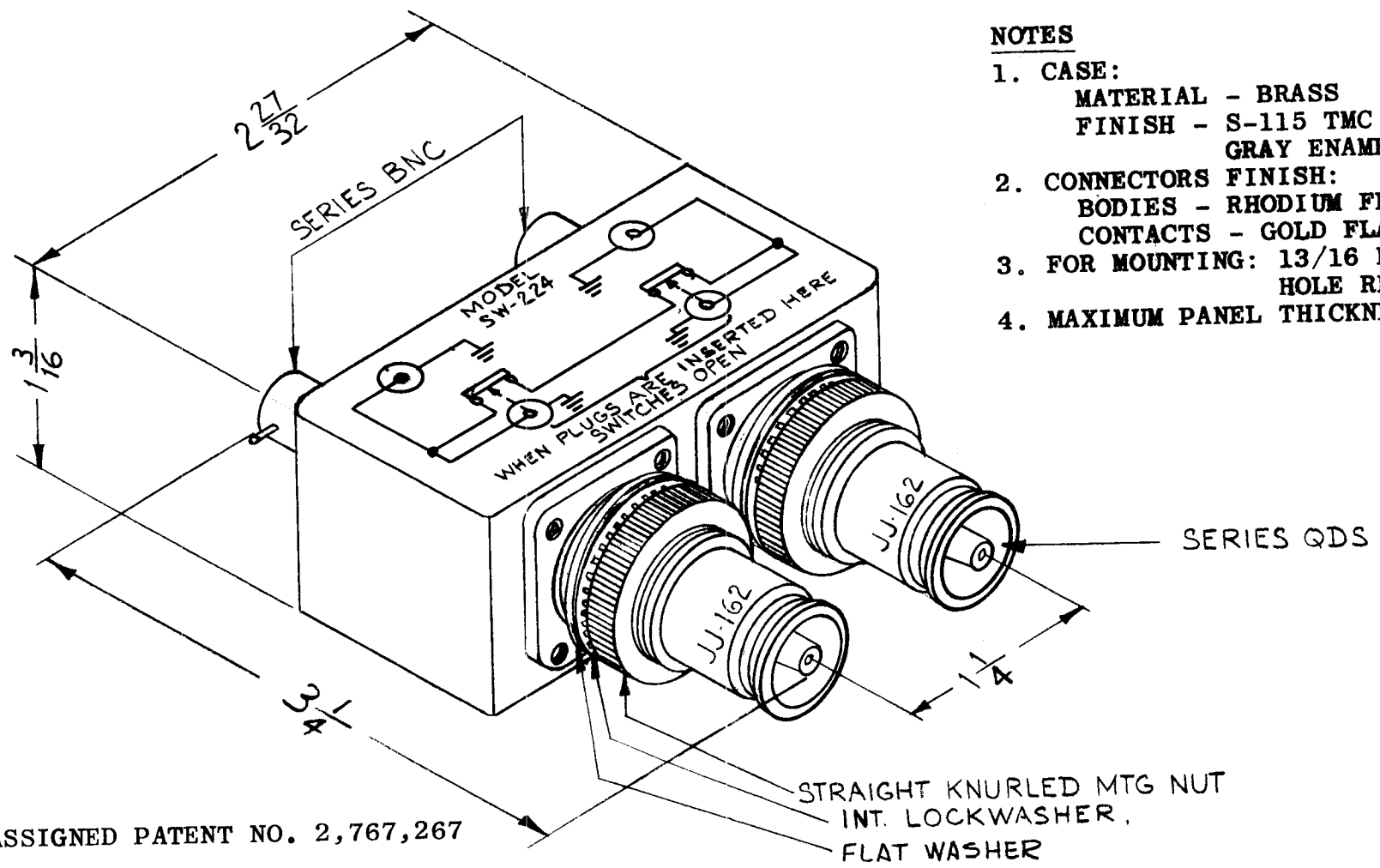


RE. PER UNIT	USED ON			SW-224	B
	MODEL	ASS'Y. NO.	DATE		
11	SPP-4		4-14-61		
10	SPP-8		4-14-61		



NOTES

1. CASE:
MATERIAL - BRASS
FINISH - S-115 TMC SMOOTH GRAY ENAMEL
2. CONNECTORS FINISH:
BODIES - RHODIUM FLASH
CONTACTS - GOLD FLASH
3. FOR MOUNTING: 13/16 DIAMETER HOLE REQUIRED
4. MAXIMUM PANEL THICKNESS - 3/16

NOTE: ASSIGNED PATENT NO. 2,767,267

							REQ.	ITEM	PART NO.	DESCRIPTION			SYMBOL	
							—		THE TECHNICAL MATERIEL CORP.					
							—		MAMARONECK, NEW YORK					
							—		SWITCH, R.F.					
							—		DUAL BNC TO DUAL QDS.					
ISSUE	ITEM	CHANGED FROM	DATE	CH. NO.	DRAFTS	CHECKER	ENG. APP.	MATERIAL						
B		PATENT NOTE ADDED	1/30/65	14846		A.V.V.	JOB							
A	2	PICTORIAL CLARIFIED	2-28-63	83B										
	1	NOTES ADDED												
TOLERANCES			SCALE: DO NOT SCALE (2A-2087)				TYPE & TEMPER		HEAT TREAT. SPEC.	DRAWN	CHECKED	FINAL APPROVAL		
DEC. DIM. ±			MAXIMUM ALLOWABLE TOLERANCES HAVE BEEN DETERMINED AND ANY DEVIATIONS WILL BE CAUSE FOR REJECTION. REMOVE ALL BURRS AND SHARP EDGES				—							
FRAC. DIM. ±							—							
ANGULAR DIM. ±							—							
							FINISH & SPEC. NO.		ELEC. DES. APP.	MECH. DES. APP.	SW-224 B			