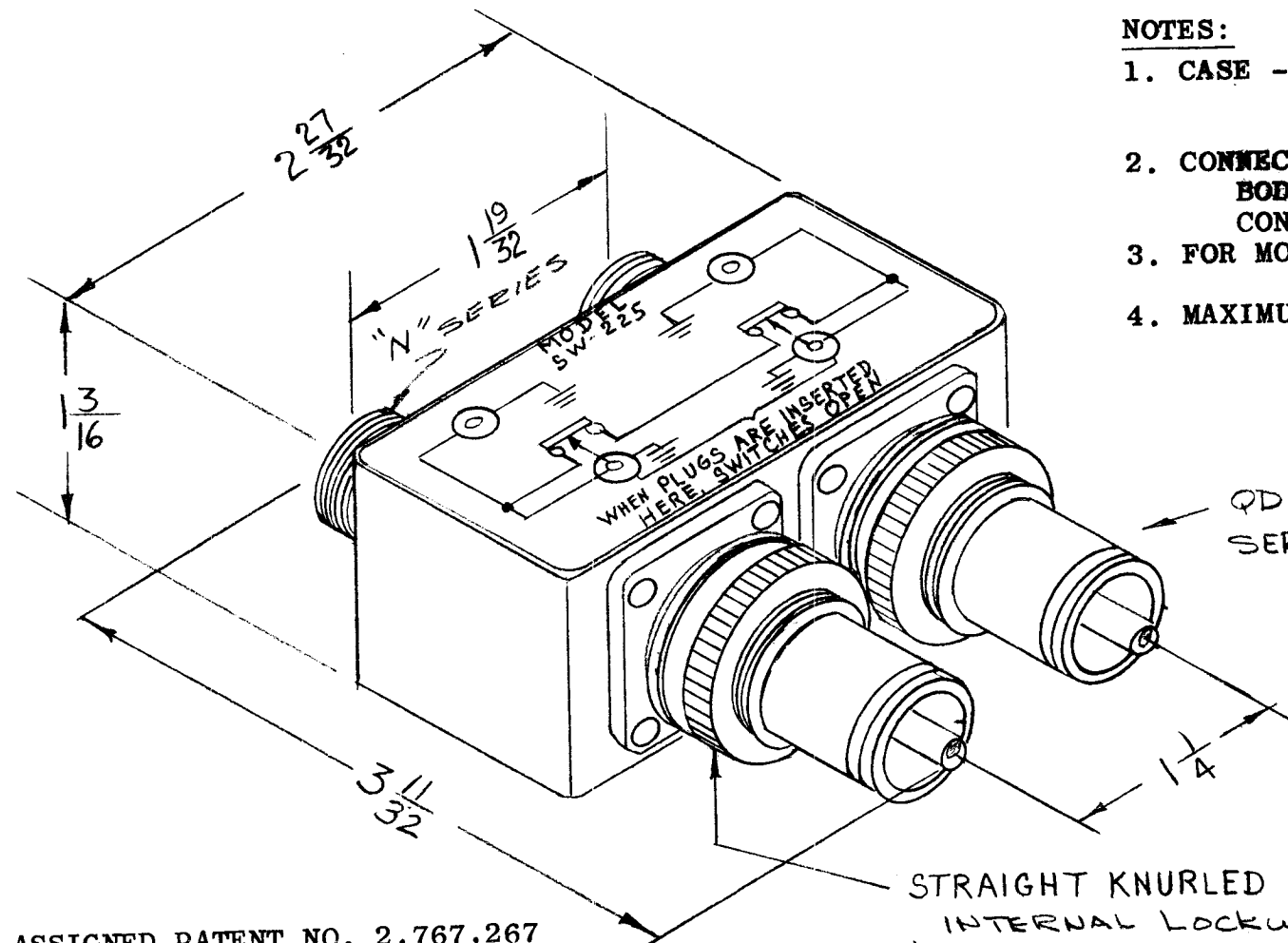


REQ. PER UNIT 11	USED ON			SW-225	C
	MODEL SPP-5	ASS'Y. NO.	DATE 3-25-60		



- NOTES:
- CASE - MATERIAL - BRASS
FINISH - S-115 TMC
SMOOTH GRAY ENAMEL
 - CONNECTORS FINISH -
BODIES - RHODIUM FINISH
CONTACTS - GOLD FLASH
 - FOR MOUNTING - 13/16 DIAMETER
HOLES REQUIRED
 - MAXIMUM PANEL THICKNESS - 3/16

NOTE: ASSIGNED PATENT NO. 2,767,267

ISSUE	ITEM	CHANGED FROM	DATE	CH. NO.	DRAFTS	CHECKER	ENG. APP.	REQ.	ITEM	PART NO.	DESCRIPTION	SYMB L					
C	1	3 1/32 WAS 3 1/4, 1/64 ADD	11-24-65	15139	2.XV	JCD	[Signature]				THE TECHNICAL MATERIEL CORP. MAMARONECK, NEW YORK						
B		PATENT NOTE ADDED	9/30/65	14846	P.V.	[Signature]	[Signature]				SWITCH, R.F.						
A	2	NOTES ADDED	2-28-63	8228	[Signature]	[Signature]	[Signature]				DUAL TYPE "N" TO DUAL QDS						
A	1	PICTORIAL CLARIFIED															
TOLERANCES			SCALE: 2A-1855					TYPE & TEMPER		HEAT TREAT. SPEC.		DRAWN		CHECKED		FINAL APPROVAL	
DEC. DIM. ± FRAC. DIM. ± 1/64 ANGULAR DIM. ±			MAXIMUM ALLOWABLE TOLERANCES HAVE BEEN DETERMINED AND ANY DEVIATIONS WILL BE CAUSE FOR REJECTION. REMOVE ALL BURRS AND SHARP EDGES					FINISH & SPEC. NO.		ELEC. DES. APP.		MECH. DES. APP.		SW-225		C	