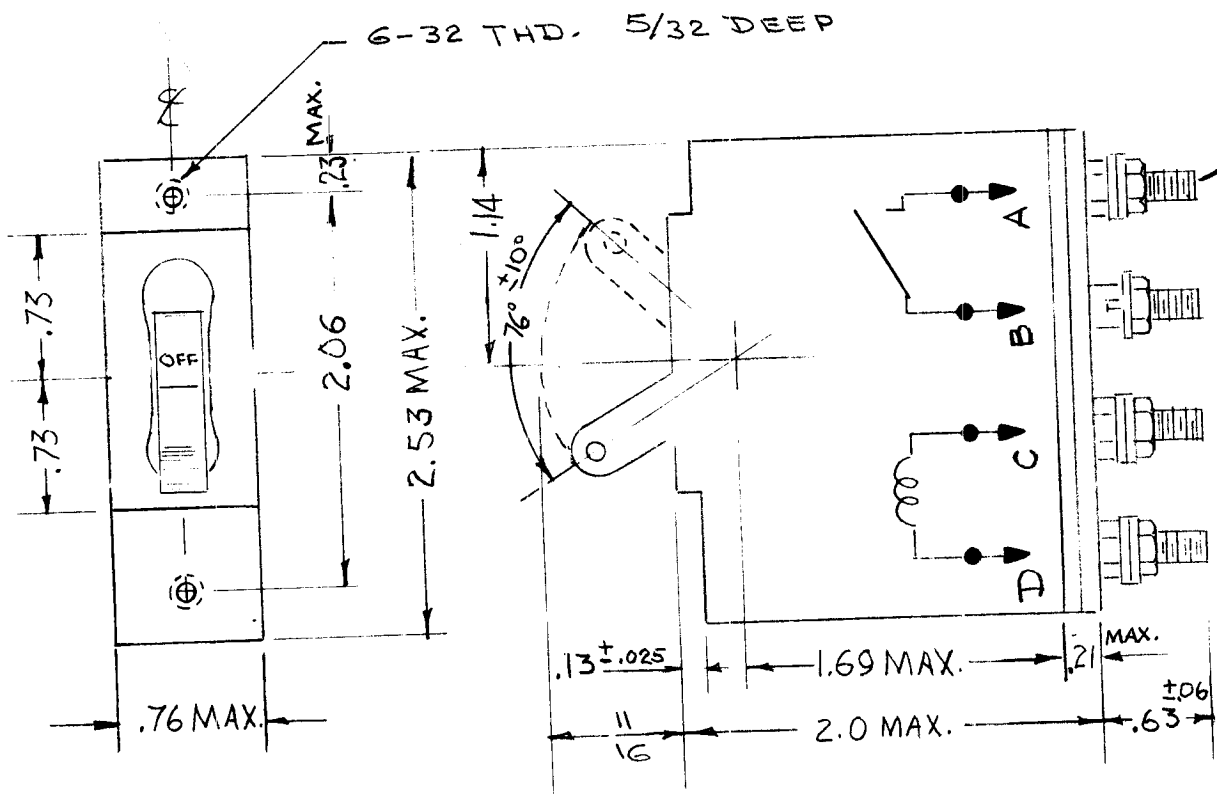


REQ. PER UNIT	USED ON			SW 229	B
	MODEL	SYMBOL NO.	DATE		
1	RTP-2	CB6000	9-23-58		



10-32 STUDS

CONTACT AMPERE RATING:  
15 AMPS AC, 50/60 CPS, 250V

COIL (SEPARATE TERMINALS)  
0.01 AMPS DC

INSULATION: 1500 V

RIPPLE: 1%

DELAY CURVE - INSTANTANEOUS  
STANDARD CALIBRATION

S401-450 (APL 5-DC-0.01A-D50)  
S401-58 (PAM 12 RSKMG6)

ISSUE	ITEM	CHANGED FROM	DATE	CH. NO.	DRAFTS	CHECKER	ENG. APP.	REQ. ITEM	PART NO.	DESCRIPTION	SYMBOL			
B		COMPLETELY REVISED	9-11-67	18399	H.G.	<i>[Signature]</i>	EFM			THE TECHNICAL MATERIEL CORP. MAMARONECK, NEW YORK	CIRCUIT BREAKER			
A	1	S401-58 NO. WAS PAM12RSK	8-30-60	2875	Cy	<i>[Signature]</i>	<i>[Signature]</i>							
TOLERANCES			SCALE:											
DEC. DIM. ±			MAXIMUM ALLOWABLE TOLERANCES HAVE BEEN DETERMINED AND ANY DEVIATIONS WILL BE CAUSE FOR REJECTION.											
FRAC. DIM. ±			REMOVE ALL BURRS AND SHARP EDGES											
ANGULAR DIM. ±			TYPE & TEMPER			HEAT TREAT. SPEC.			DRAWN		CHECKED		FINAL APPROVAL	
			FINISH & SPEC. NO.			ELEC. DES. APP.		MECH. DES. APP.		SW 229 B				