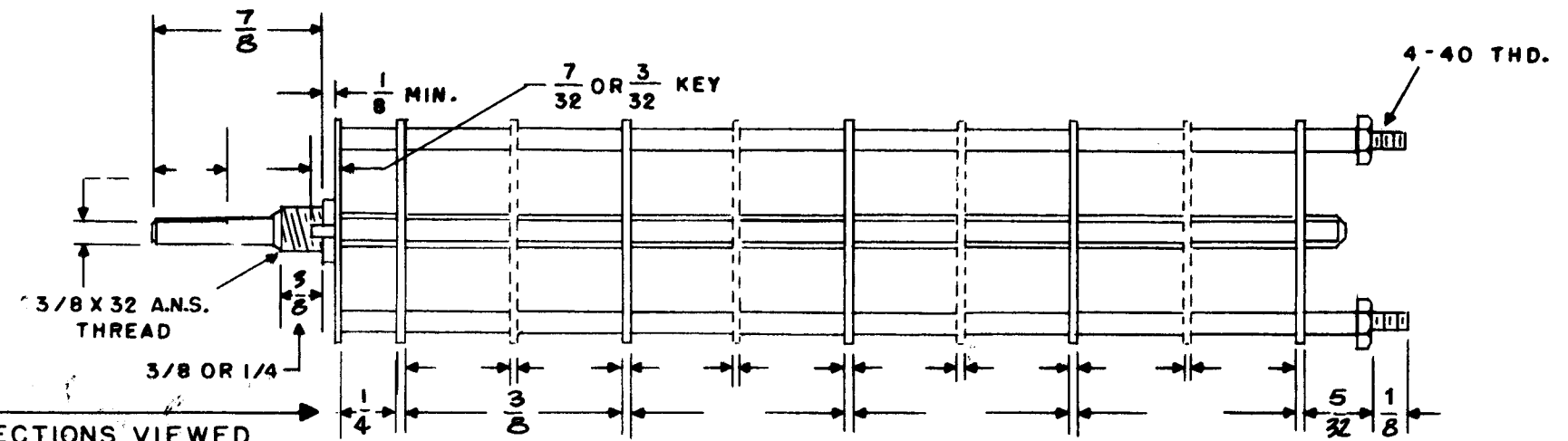
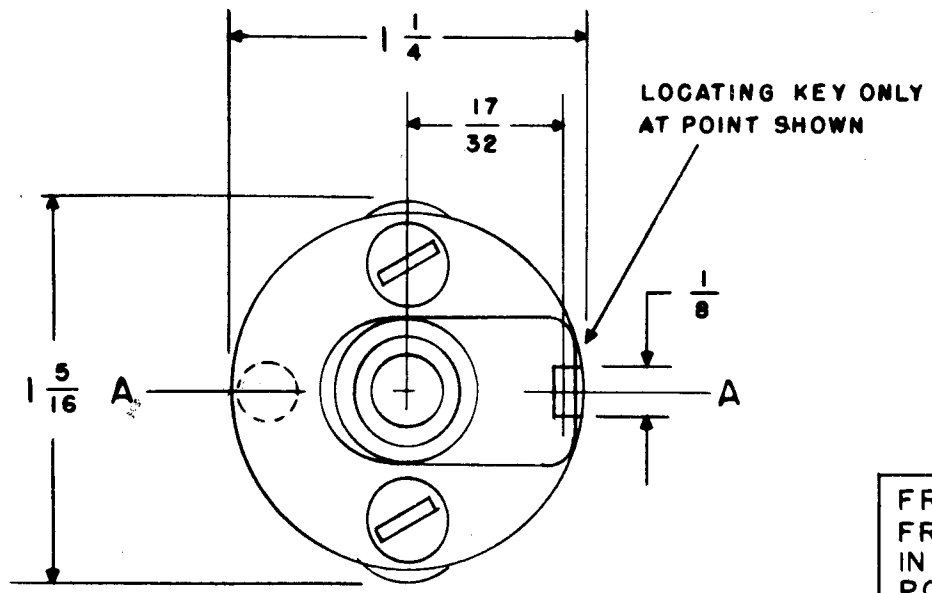


SW-265



FRONT & REAR OF SECTIONS VIEWED FROM FRONT OR KNOB END OF SWITCH IN EXTREME COUNTER-CLOCKWISE POSITION

SHOW CUT AWAY PORTION OF FLAT IN BLACK AND GIVE ANGLE TO LINE A-A  $\pm 3^\circ$ . (STANDARD RMA KNURLED AND SLOTTED SHAFT ALSO AVAILABLE)

NUMBER OF SECTIONS 2  
 NUMBER OF POSITIONS 5  
 ANGLE OF THROW 30° (30° OR 60°)

PART NUMBER \_\_\_\_\_  
 STAMP ON FRONT PLATE YES  NO \_\_\_\_\_

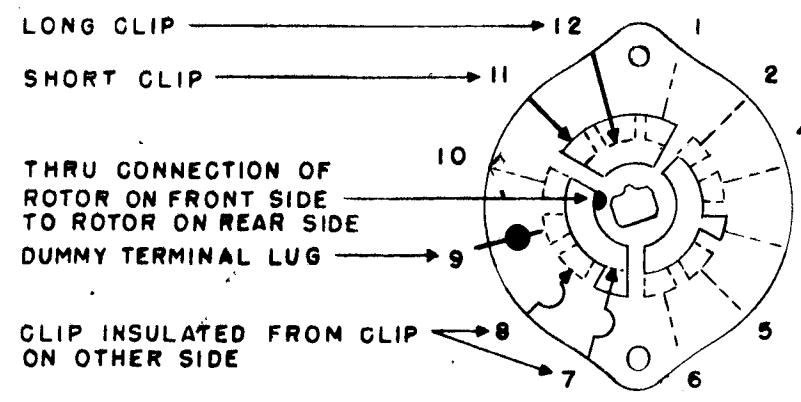
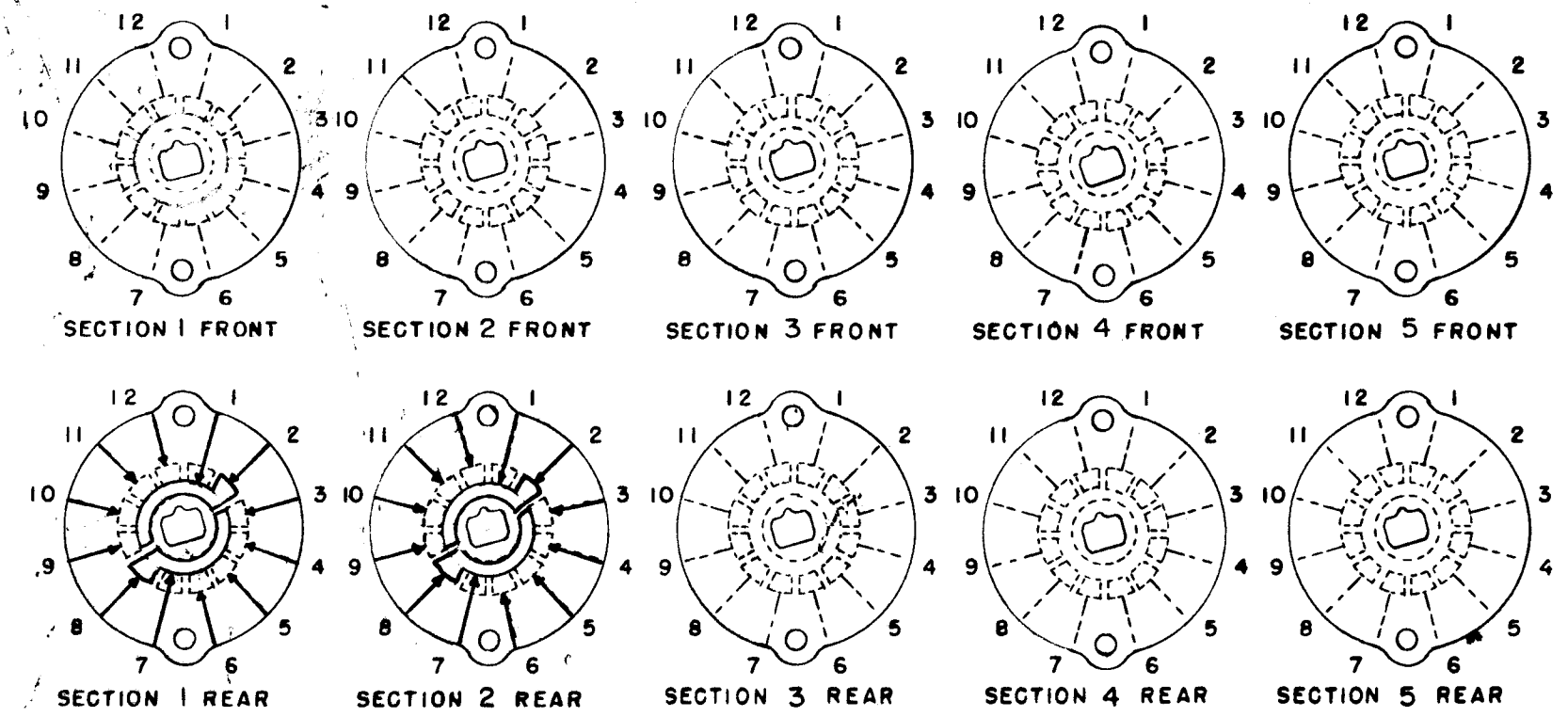
CONTACTS & ROTORS: (IF NOT SPECIFIED, SHORTING TYPE WILL BE SUPPLIED)  
 SHORTING \_\_\_\_\_ NON SHORTING

MATERIAL: (IF NOT SPECIFIED, SILVER PLATED BRASS WILL BE SUPPLIED)  
 SILVER PLATED BRASS  SILVER ALLOY \_\_\_\_\_

INSULATION: 1/16 BAKELITE  1/8 MYCALEX \_\_\_\_\_  
 SPECIFY IMPREGNATION IF REQUIRED \_\_\_\_\_

FINISH REQUIREMENTS: COMMERCIAL  ARMY \_\_\_\_\_ NAVY \_\_\_\_\_  
 SALT TEST (IF ANY GIVE DETAILS) \_\_\_\_\_

HARDWARE: SUPPLY  
 \_\_\_\_\_ 3/8-32 NUTS \_\_\_\_\_ ACROSS FLATS  
 \_\_\_\_\_ 3/8 INTERNAL TOOTH LOCKWASHERS



SYMBOLS USED IN MARKING PRINT

OAK TYPE F SWITCH


ISSUE	ITEM	CHANGED FROM	DATE	CH. NO.	DRAFTS	CHECKER	ENG. APP.
TOLERANCES			SCALE:				
DEC. DIM. $\pm$			MAXIMUM ALLOWABLE TOLERANCES HAVE BEEN DETERMINED AND ANY DEVIATIONS WILL BE CAUSE FOR REJECTION. REMOVE ALL BURRS AND SHARP EDGES				
FRAC. DIM. $\pm$							
ANGULAR DIM. $\pm$							

1	MCP-2	10-15-59
REQ. PER UNIT	MODEL	DATE
	PROJECT NO.	ASSY. NO.
USED ON		

REQ. ITEM	PART NO.	DESCRIPTION	SYMBOL
THE TECHNICAL MATERIEL CORP. MAMARONECK, NEW YORK			
SWITCH, 4 POLE, 5 POSITION			
MATERIAL			
TYPE & TEMPER	HEAT TREAT. SPEC.	DRAWN	CHECKED
FINISH & SPEC. NO.		ELEC. DES. APP.	MECH. DES. APP.
		SW-265	