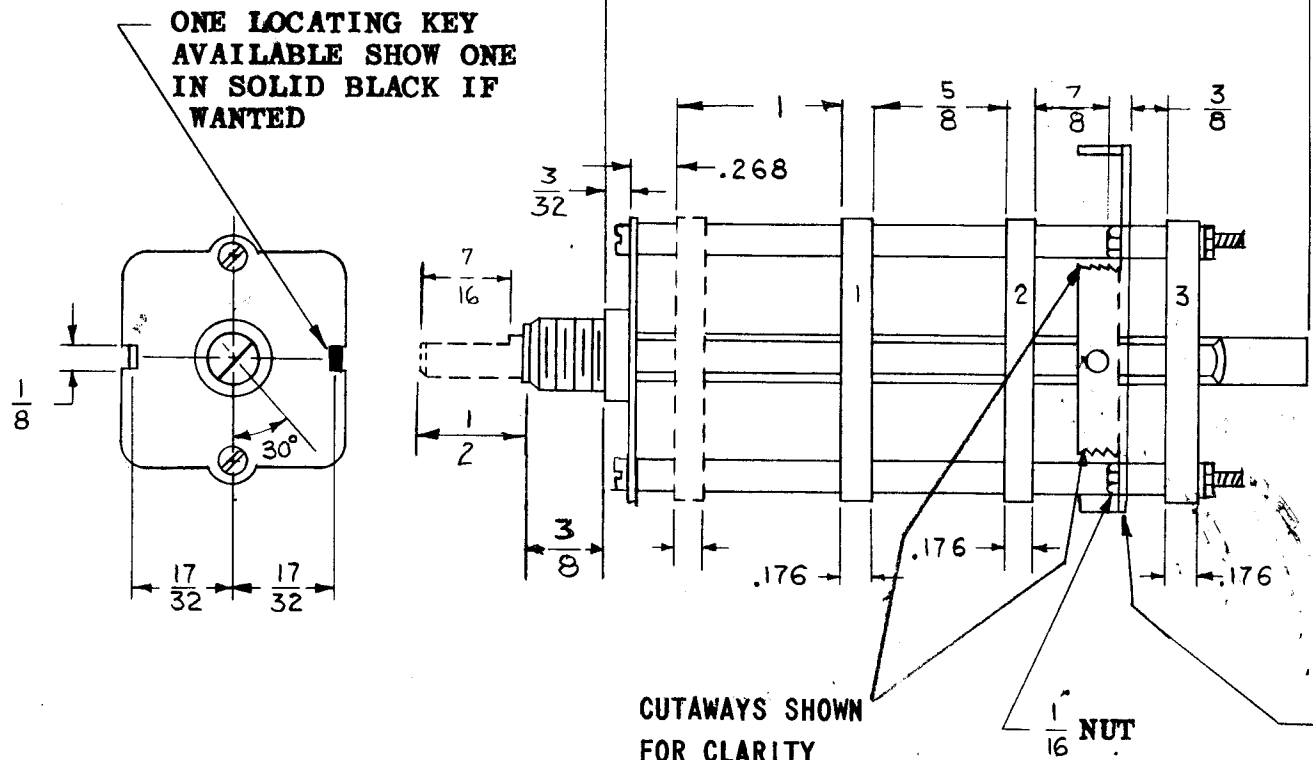


REVISIONS

SYM	DESCRIPTION	DATE	E.M.N. NO.	DRAFT	CHKD	APPD
A	GENERAL UPDATING & REDRAWN	11/19/63	10362	AD	AD	WFB
B	* NOTE ADDED	2-12-65	13483	2.P.	AD	AEF
C	COMPLETELY REVISED	9.14.67	18493	H.G.	AD	EFM

SW-301 C



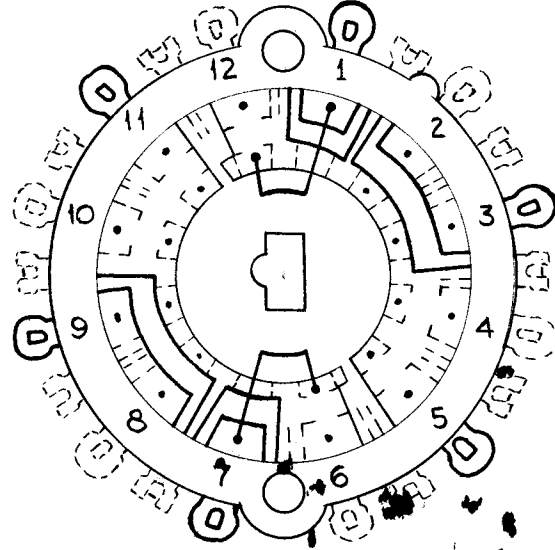
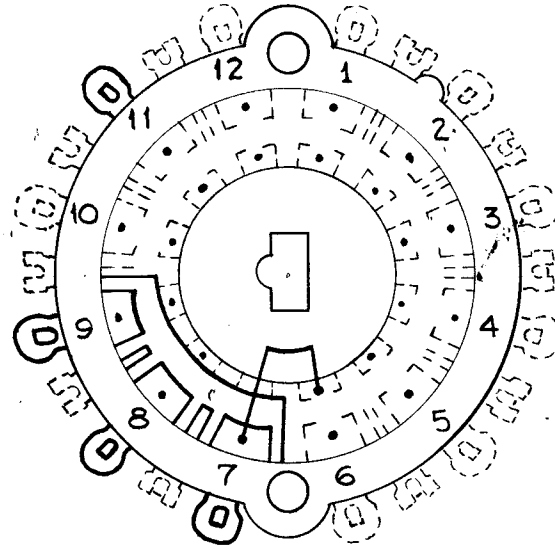
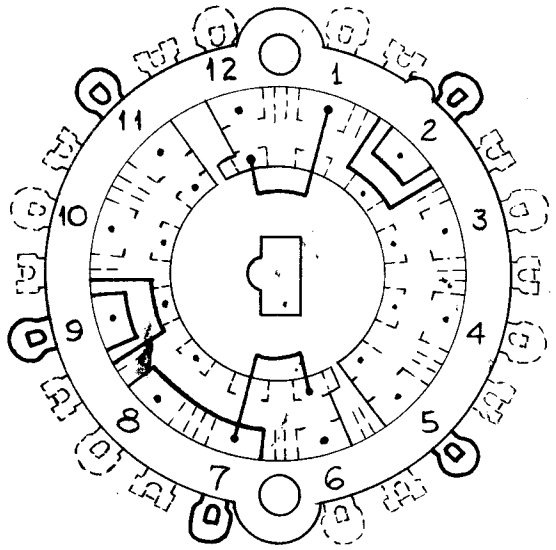
IF LOCATED FLAT OR SLOT REQUIRED SHOW CUT-AWAY PORTION IN SOLID BLACK IN EXTREME C.C.W. POSITION

CUTAWAYS SHOWN FOR CLARITY .064 MOUNTING PLATE (MS-3442 or MS-3444) (NOT SUPPLIED BY SWITCH MFR.)

SECTION #1

SECTION #2

SECTION #3



NOTE* SW301 DETENT LEVER ARMS TO BE LOADED WITH (2) -005 SPRINGS RESULTING IN 1 IN. LBS. TORQUE

TMC PART NO.	SW-301
<input checked="" type="checkbox"/> 3	TOTAL NO. OF POSITIONS
<input checked="" type="checkbox"/> 3	TOTAL NO. OF SECTIONS
<input type="checkbox"/>	SHORTING CONTACTS
<input checked="" type="checkbox"/>	NON SHORTING CONTACTS
FINISH REQUIREMENT	
<input checked="" type="checkbox"/>	50 HR. SALT SPRAY
<input type="checkbox"/>	200 HR. SALT SPRAY
<input type="checkbox"/>	ALL STAINLESS
HARDWARE (CHECK IF REQUIRED)	
<input checked="" type="checkbox"/>	NUTS 3/8-32, 1/2 ACROSS FLATS, 3/32 THICK.
<input checked="" type="checkbox"/>	3/8 INTERNAL TOOTH LOCKWASHERS 11/16 O.D.X. 1/32 THICK.
<input type="checkbox"/>	CHECK HERE IF ADDITIONAL SPECIFICATIONS ON OPPOSITE SIDE.
<input checked="" type="checkbox"/>	SPECIAL INSTRUCTIONS*(SEE NOTE) FREE RUNNING DETENT, (NO STOPS)

NOTES

2	HFA-1	7-26-62
Q'TY./UNIT	MODEL USED ON	ASS'Y. NO.
SCALE	CODE	5401-175
DO NOT SCALE		

THE CONTENTS OF THIS DRAWING ARE THE EXCLUSIVE PROPERTY OF THE TECHNICAL MATERIEL CORP. ITS UNAUTHORIZED USE OR REPRODUCTION IN WHOLE OR IN PART IS STRICTLY FORBIDDEN.

REQ'D.	ITEM	PART NUMBER	DESCRIPTION	SYMBOL
A. FAIOLA LIST OF MATERIAL				
MATERIAL			THE TECHNICAL MATERIEL CORP. MAMARONECK, NEW YORK	
FINISH			TITLE SWITCH, ROTARY DETECTION	
UNLESS OTHERWISE SPECIFIED DIMENSIONS ARE IN INCHES AND INCLUDE CHEMICALLY APPLIED OR PLATED FINISHES			DRAWN <i>ADavis</i> CHECKED <i>AD</i>	DATE 11-19-63 DATE 11-20-63
DECIMALS .X ± .05 .XX ± .01 .XXX ± .005			ELECT. DES. MECH. DES.	FINAL APPROVAL <i>BP</i> DATE SHEET
FRACTIONS ± 1/64 ANGLES ± 0° 30'			SW-301 C	
TOLERANCES			REV. LTR.	