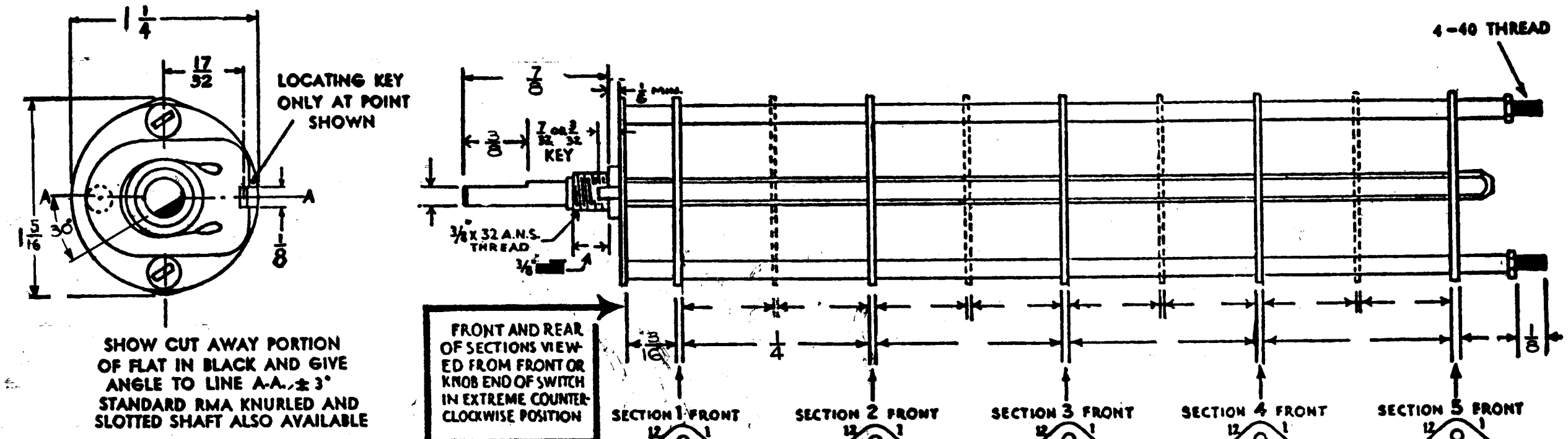


SW-335

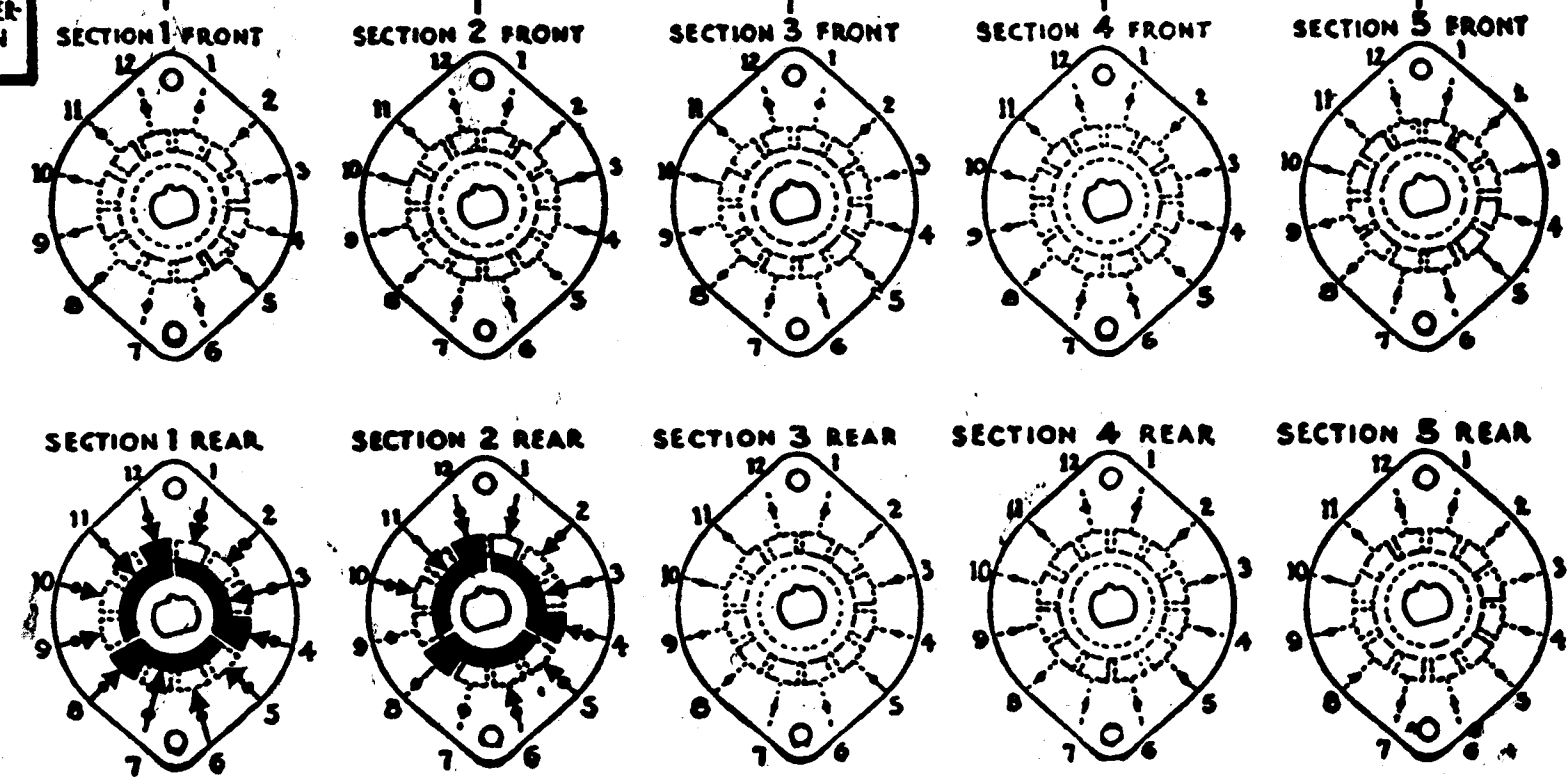
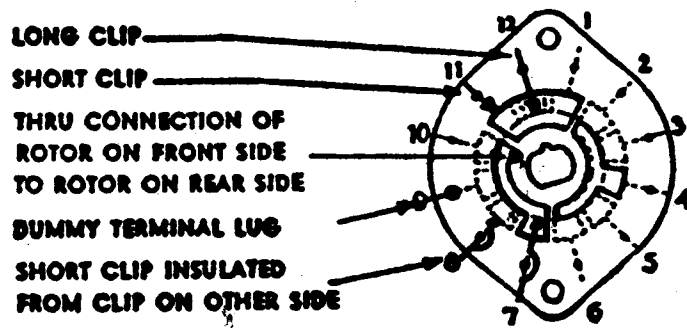


SHOW CUT AWAY PORTION OF FLAT IN BLACK AND GIVE ANGLE TO LINE A-A. ± 3° STANDARD RMA KNURLED AND SLOTTED SHAFT ALSO AVAILABLE

FRONT AND REAR OF SECTIONS VIEWED FROM FRONT OR KNOB END OF SWITCH IN EXTREME COUNTER-CLOCKWISE POSITION

NUMBER OF SECTIONS 2
 NUMBER OF POSITIONS 3
 ANGLE OF THROW 30° (30° OR 60°)

SYMBOLS USED IN MARKING PRINT



OUTLINE ROTOR BLADES AS SHOWN ABOVE WITH SWITCH IN EXTREME COUNTER-CLOCKWISE POSITION

CUSTOMER NOTES

SPECIFICATIONS

SHORTING TYPE CONTACTS NON-SHORTING IF NOT SPECIFIED SHORTING TYPE WILL BE SUPPLIED.
 INSULATION: 1/16" BAKELITE 1/8" MY CALEX SPECIFY IMPREGNATION IF REQUIRED.....
 FINISH REQUIREMENTS: COMMERCIAL ARMY NAVY SALT TEST (IF ANY GIVE DETAILS) 200hr.
 CONTACTS AND ROTORS: SILVER PLATED BRASS SOLID SILVER ALLOY IF NOT SPECIFIED SILVER PLATED BRASS WILL BE SUPPLIED.
 MOUNTING HARDWARE: SUPPLY 1/8" - 32 NUTS; 1/4" ACROSS FLATS; MATERIAL BR. PLATING. NKL.
 1/8" - 32 INTERNAL TOOTH LOCKWASHER; MATERIAL BR. PLATING. NKL.
 STAMP PART NUMBER. SW 335 ON FRONT PLATE, YES NO

SYM	DESCRIPTION	DATE	CH. NO.	DRAFTS	CHECKER	ENG. APP.
UNLESS OTHERWISE SPECIFIED:						
DIMENSIONS ARE IN INCHES						
TOLERANCES ON FRACTIONS ± 1/64 DECIMALS ± .005 ANGLES ± 1/2°						
SCALE: MAXIMUM ALLOWABLE TOLERANCES HAVE BEEN DETERMINED AND ANY DEVIATIONS WILL BE CAUSE FOR REJECTION. REMOVE ALL BURRS AND SHARP EDGES						

1	GPR-92				6-17-63
REQ. PER UNIT	MODEL	SECTION	ASSY. NO.	DATE	
	USED ON				

REQ. ITEM	PART NO.	STRUMER DESCRIPTION		SYMBOL
		THE TECHNICAL MATERIEL CORP, MAMARONECK, NEW YORK		
		SWITCH, ROTARY		
		MATERIAL		
		TYPE & TEMPER	HEAT TREAT. SPEC.	FINISH & SPEC. NO.
		DRAWN	CHECKER	FINAL APPROVAL
		ELEC. DES. APP.	MECH. DES. APP.	SW-335