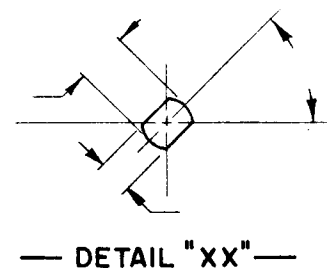


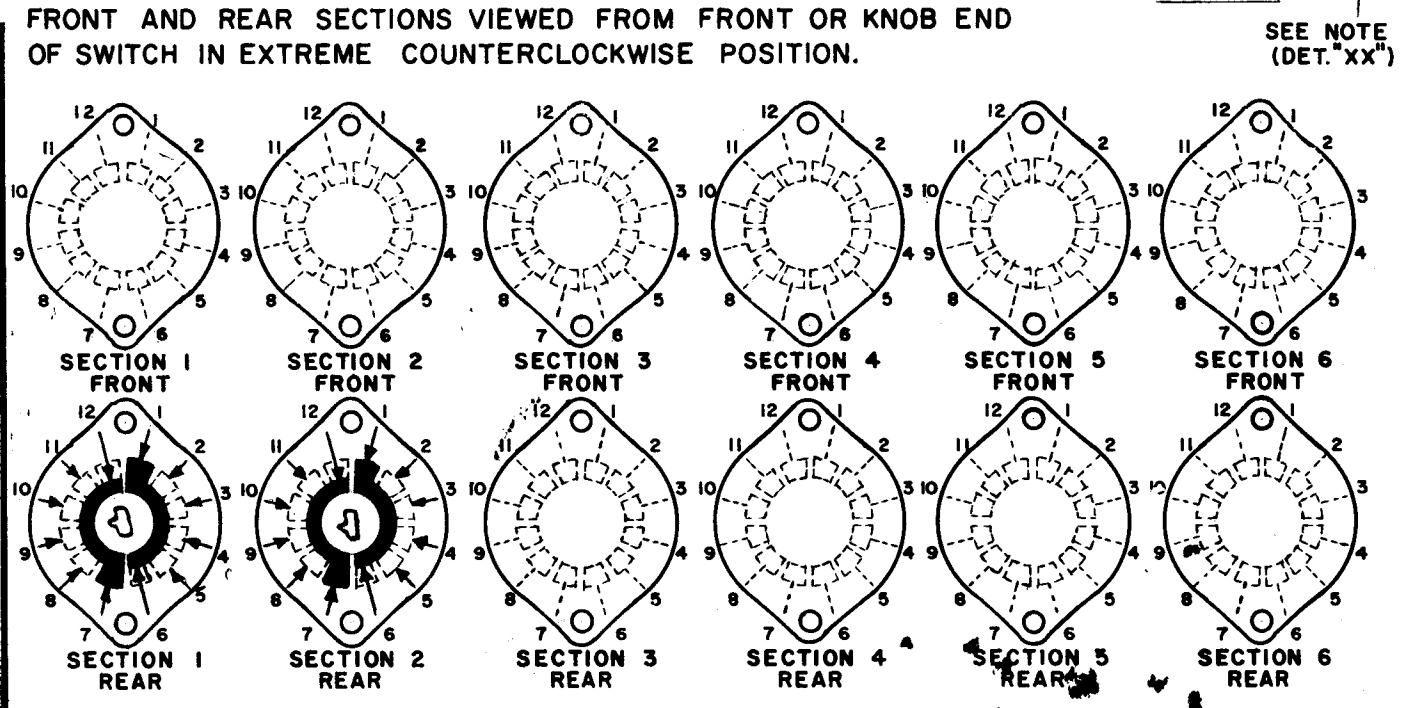
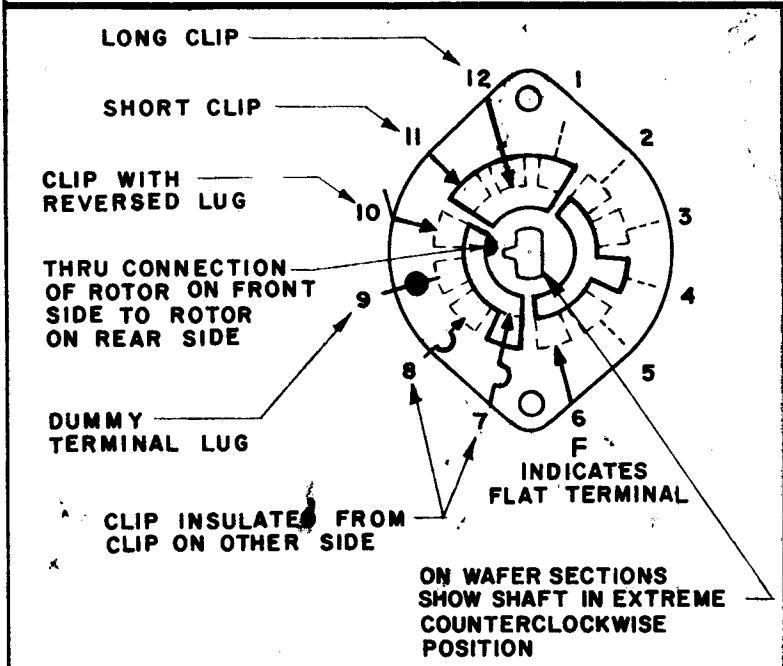
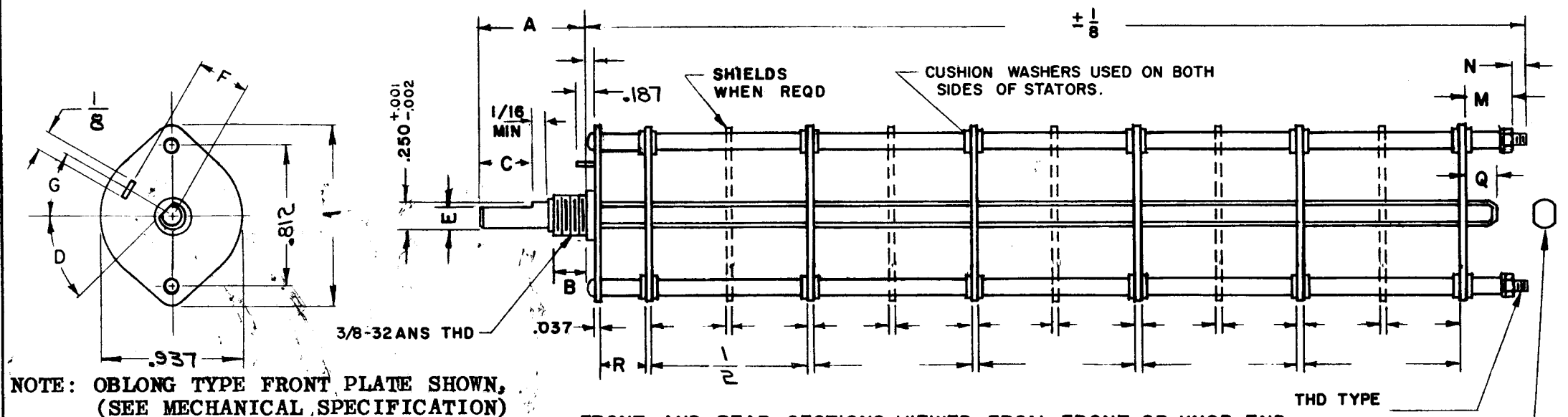
DESG.	DIMENSION	TOL.	REMARK
A	1-3/16	±.015	SHAFT LG. FROM MTG. SURFACE
B	3/8	±.005	BUSH. LG.
C	ROUND	±.015	FLAT LG. (IF REQ.)
D	1/4	±2°	FLAT ANGLE (IF REQ.)
E	1/4	±.002	FLAT (IF REQUIRED)
F	3/8	±.010	KEY LOCATION (IF REQ.)
G	180°		KEY LOCATION (IF REQ.)
M	1/4	±.010	
N	1/4	±.093	REAR SCR. EXT.
Q	1/4	±.031	REAR SHAFT EXT.
R	5/16		1st SEC. SPACING

TMC PART NUMBER: SW 364 STAMP ON FRONT PLATE
 FRONT PLATE SHAPE: ROUND OR OBLONG X
 MECHANICAL SPECIFICATIONS: NO STOP, ROTATION 360°
 NUMBER OF SECTIONS - 2
 NUMBER OF POSITIONS - 5
 ANGLE OF THROW - 30°
 CONTACTS:
 SHORTING TYPE, SECTIONS _____
 NON SHORTING TYPE, SECTIONS 2
 SILVER PLATED BRASS, SECTIONS _____
 SILVER ALLOY, SECTIONS 2
 WAFERS: SILICON GLASS 3 SECTIONS
 ROTOR: KELF 3 SECTIONS
 CERAMIC, SECTIONS _____
 MYCALEX, SECTIONS _____
 IMPREGNATION (IF REQ.) _____
 FINISH REQUIREMENTS:
 ARMY NAVY COMMERCIAL X
 SALT TEST (IF REQ.) _____
 HARDWARE, TO BE SUPPLIED BY MANUFACTURER:
 1 QUAN. 3/8-32 NUTS 1/2 ACROSS FLATS
 MATERIAL STEEL PLATING CADMIUM
 1 QUAN. 3/8 INTERNAL TOOTH LOCKWASHER
 MATERIAL STEEL PLATING CADMIUM
 ELECTRICAL SPECIFICATIONS:
 MAXIMUM RATED VOLTAGE _____
 MAXIMUM RATED CURRENT _____
 CONSTRUCTION BOLTED
 NOTE:
 FOR S401-13 ("F" TYPE) SWITCHES, THE SHAFT POSITION MUST BE SPECIFIED ON DETAIL "XX" BELOW.



NOTES

REVISIONS						
SYM	DESCRIPTION	DATE	E.M.N. NO.	DRAFT	CHKD	APPD
X	EXPER. RELEASE	8-10-64	X			
Ø	ORIGINAL RELEASE FOR PRODUCTION	8-21-64		WJB		



SYMBOLS USED IN MARKING PRINT

Q'TY./UNIT	MODEL USED ON	ASS'Y. NO.
SCALE	CODE	
	C	S401-13

THE CONTENTS OF THIS DRAWING ARE THE EXCLUSIVE PROPERTY OF THE TECHNICAL MATERIEL CORP. ITS UNAUTHORIZED USE OR REPRODUCTION IN WHOLE OR IN PART IS STRICTLY FORBIDDEN.

SWITCH, ROTARY - 12 POINT TYPE - A

MATERIAL	THE TECHNICAL MATERIEL CORP.		
	GELLMAN MAMARONECK, NEW YORK		
FINISH	TITLE		
	SWITCH, ROTARY AGC DECAY		
UNLESS OTHERWISE SPECIFIED DIMENSIONS ARE IN INCHES AND INCLUDE CHEMICALLY APPLIED OR PLATED FINISHES	DRAWN	DATE	FINAL APPROVAL
	CHECKED	DATE	
DECIMALS	FRACTIONS	DATE	
.X ± .05	± 1/64		
.XX ± .01	ANGLES		
.XXX ± .005	± 0° 30'		
ELECT. DES.		DATE	SW 364
MECH. DES.		DATE	Ø
		SHEET	REV. LTR.