

TMC PART No.	MFG. MODEL No.	POSITIONS	TMC LAMP PART No.	A	B	C	D	E	F	PLUNGER TRAVEL	CONTACT RATING	LAMP VOLT.
SW366-1	SP-1D-115	15	BI-110-7	10.750	10.250	.750	.625	—	.593	9/32	5A	28V

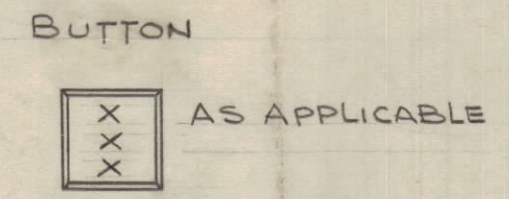
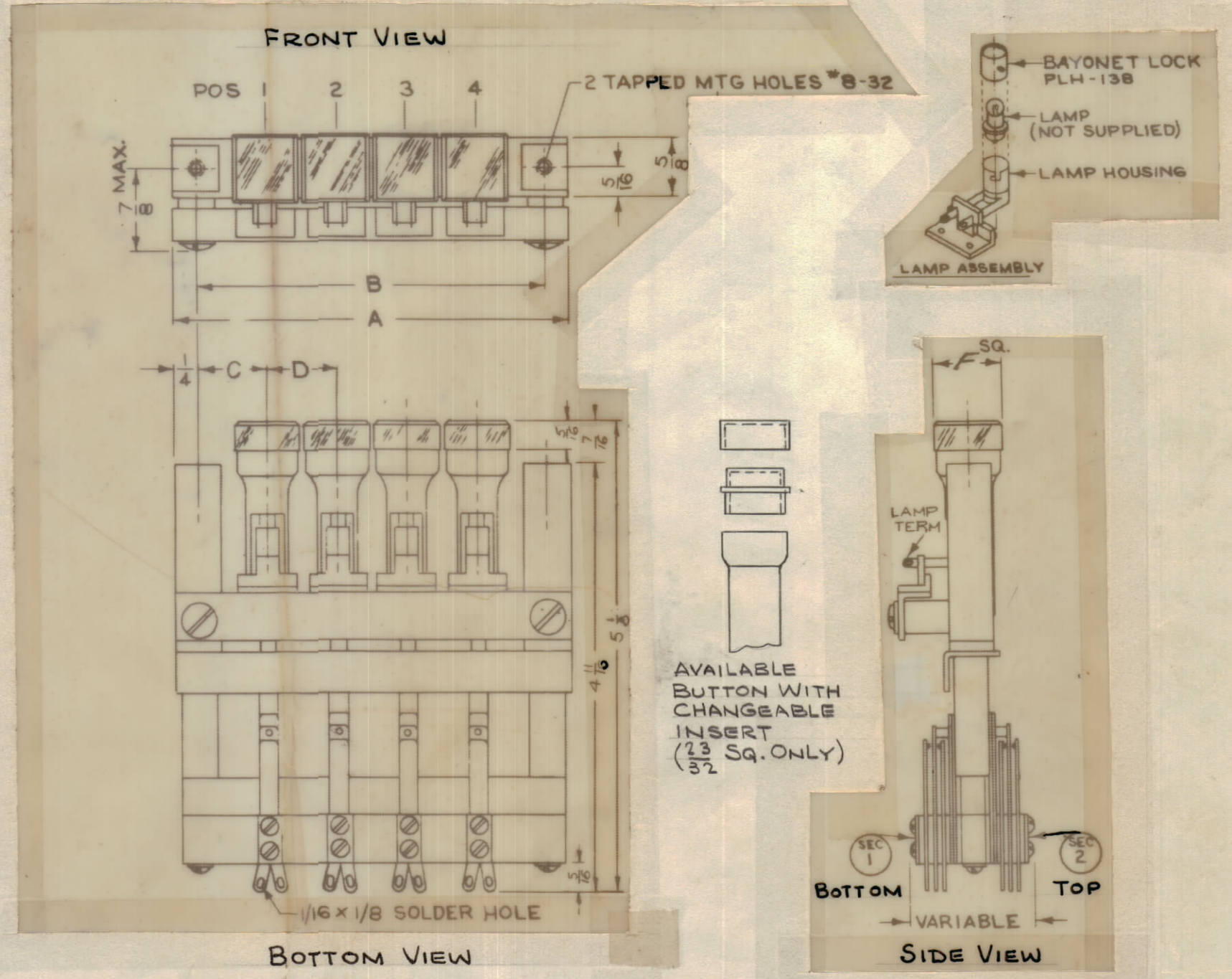
REVISIONS						
ZONE	SYM	DESCRIPTION	DATE	E.M.N. NO.	DRAFT	APPD
	X	EXPERIMENTAL RELEASE	2-8-65		HCA	
		ORIGINAL RELEASE FOR PRODUCTION	2-17-65		JL	
	A	CHART IV NO.4 REVISED	7/9/65	144-27	JL	

CONTACT ARRANGEMENT CHART I & OPERATION (CHART IV)

CONTACT CODE	SECTION	POSITION FORM														
		1	2	3	4	5	6	7	8	9	10	11	12	13	14	15
1	2 (TOP)	1A	NONE	NONE	NONE	NONE	4A	3A	NONE	NONE	NONE	NONE	NONE	NONE	NONE	NONE
	1 (BOTTOM)	NONE	NONE	NONE	NONE	NONE	NONE	NONE	NONE	NONE	NONE	NONE	NONE	NONE	NONE	NONE
	OPERATION	4	4	NONE	NONE	NONE	1	1	NONE	NONE	NONE	NONE	NONE	NONE	NONE	NONE

CHART II
BUTTON LEGEND

BUTTON LEGEND CODE	POSITION														
	1	2	3	4	5	6	7	8	9	10	11	12	13	14	15
A	NO PUNCH	PUNCH	—	—	—	REC 1	REC 2	—	—	—	—	—	—	—	—



WHITE TRANSLUCENT WITH BLACK LETTERING

LEGEND SIZES
 * 1 LINE: LETTERING 5/32 HIGH, GOTHIC
 * 2 LINES: LETTERING 5/32 HIGH, GOTHIC
 * 3 LINES: LETTERING 1/8 HIGH, GOTHIC

* ENGRAVING AS PER TMC SPEC 5566.

CHART V CONTACT PILE-UP

D	THE UPPERMOST CONTACT OF SEC. 2 (TOP) TO BE DELAYED FOR ALL POSITIONS.
S	STANDARD

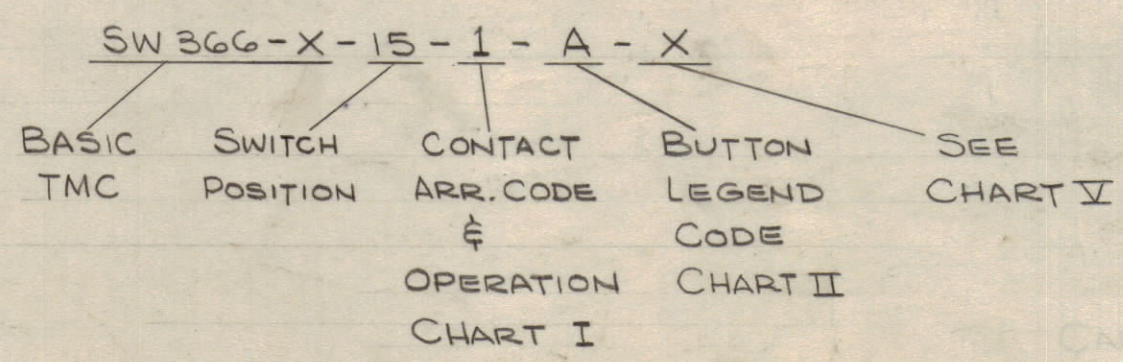
CHART IV

- OPERATIONS:
- MOMENTARY (NON LOCKING)-HAS NO LOCKING ACTION. BUTTON RETURNS TO NORMAL ON RELEASE OF FINGER PRESSURE.
 - INTERLOCKING- ACTUATION OF ANY POSITION LOCKS IN AND RELEASES ANY PREVIOUSLY ENGAGED. SIMULTANEOUS ACTUATION OF TWO OR MORE POSITIONS WILL LOCK IN & RELEASE ANY PREVIOUSLY ENGAGED.
 - MOMENTARY (NON LOCKING)-BUT WITH LOCKOUT FEATURE (NO TWO POSITIONS CAN BE ENERGIZED AT THE SAME TIME).
 - INTERLOCK LOCKOUT ACTUATION OF ANY POSITION LOCKS IN AND RELEASES ANY PREVIOUSLY ENGAGED IMPOSSIBLE TO ACTUATE MORE THAN ONE POSITION AT 1 TIME (NO 2 OPER)
 - ACCUMULATIVE LOCK-UP- ACTUATION OF ONE OR MORE POSITIONS REMAIN ENGAGED UNTIL ALL POSITIONS ARE RESTORED TO NORMAL UPON ACTUATION OF RELEASE POSITION.

CHART III
CONTACT ARRANGEMENTS

FORM	CONTACT OPERATION
A	MAKE
B	BREAK
C	BREAK-MAKE
D	MAKE-BREAK
E	BREAK-MAKE-BREAK

TMC PART NO. TO BE IN FOLLOWING FORM:



NOTES

Q'TY./UNIT	MODEL USED ON	ASS'Y. NO.
SCALE	C	S401-365 (SERIES "S")

THE CONTENTS OF THIS DRAWING ARE THE EXCLUSIVE PROPERTY OF THE TECHNICAL MATERIEL CORP. ITS UNAUTHORIZED USE OR REPRODUCTION IN WHOLE OR IN PART IS STRICTLY FORBIDDEN.

REQ'D.	ITEM	PART NUMBER	DESCRIPTION	SYMBOL
LIST OF MATERIAL				
MATERIAL		THE TECHNICAL MATERIEL CORP. MAMARONECK, NEW YORK		
FINISH		TITLE SWITCH, MULTIPLE POSITION PUSHBUTTON		
UNLESS OTHERWISE SPECIFIED DIMENSIONS ARE IN INCHES AND INCLUDE CHEMICALLY APPLIED OR PLATED FINISHES		DRAWN H. AUSTIN	DATE 2-8-65	FINAL APPROVAL
DECIMALS .X ± .05 .XX ± .01 .XXX ± .005		CHECKED U. SIMMONS	DATE 2-16-65	DATE
FRACTIONS ± 1/64 ANGLES ± 0° 30'		ELECT. DES. J. J. ...	DATE 2-16-65	DATE
TOLERANCES		MECH. DES.	DATE	DATE
SHEET			SW 366	REV. LTR. A