

DESG.	DIMENSION	TOL.	REMARK
A	7/8	±.015	SHAFT LG. FROM MTG. SURFACE
B	3/8	±.005	BUSH. LG.
C	—	±.015	FLAT LG. (IF REQ.)
D	—	±2°	FLAT ANGLE (IF REQ.)
E	—	±.002	FLAT (IF REQUIRED)
F	.531	±.010	KEY LOCATION (IF REQ.)
G	180°		KEY LOCATION (IF REQ.)
M	3/8	±.010	
N	1/8	±.093	REAR SCR. EXT.
Q	3/16	±.031	REAR SHAFT EXT.
R	7/16		1st SEC. SPACING

TMC PART NUMBER: SW-369 STAMP ON FRONT PLATE  
 FRONT PLATE SHAPE: ROUND X OR OBLONG  
 MECHANICAL SPECIFICATIONS: NO STOP 360° ROTATION  
 NUMBER OF SECTIONS- 5 (INDEX-DUAL BALL)  
 NUMBER OF POSITIONS- 10  
 ANGLE OF THROW- 30°

CONTACTS:  
 SHORTING TYPE, SECTIONS 5  
 NON SHORTING TYPE, SECTIONS \_\_\_\_\_  
 SILVER PLATED BRASS, SECTIONS \_\_\_\_\_  
 SILVER ALLOY, SECTIONS 5

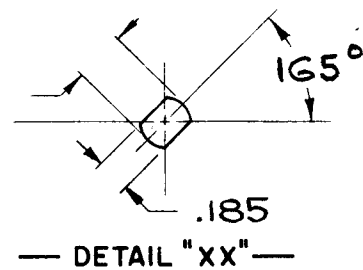
WAFERS:  
 BAKELITE, SECTIONS 5  
 CERAMIC, SECTIONS \_\_\_\_\_  
 MYCALEX, SECTIONS \_\_\_\_\_  
 IMPREGNATION (IF REQ.) \_\_\_\_\_

FINISH REQUIREMENTS:  
 ARMY \_\_\_\_\_ NAVY \_\_\_\_\_ COMMERCIAL X  
 SALT TEST (IF REQ.) \_\_\_\_\_

HARDWARE, TO BE SUPPLIED BY MANUFACTURER:  
 1 QUAN. 3/8 -32 NUTS 1/2 ACROSS FLATS  
 MATERIAL STEEL PLATING CADMIUM  
 1 QUAN. 3/8 INTERNAL TOOTH LOCKWASHER  
 MATERIAL STEEL PLATING CADMIUM

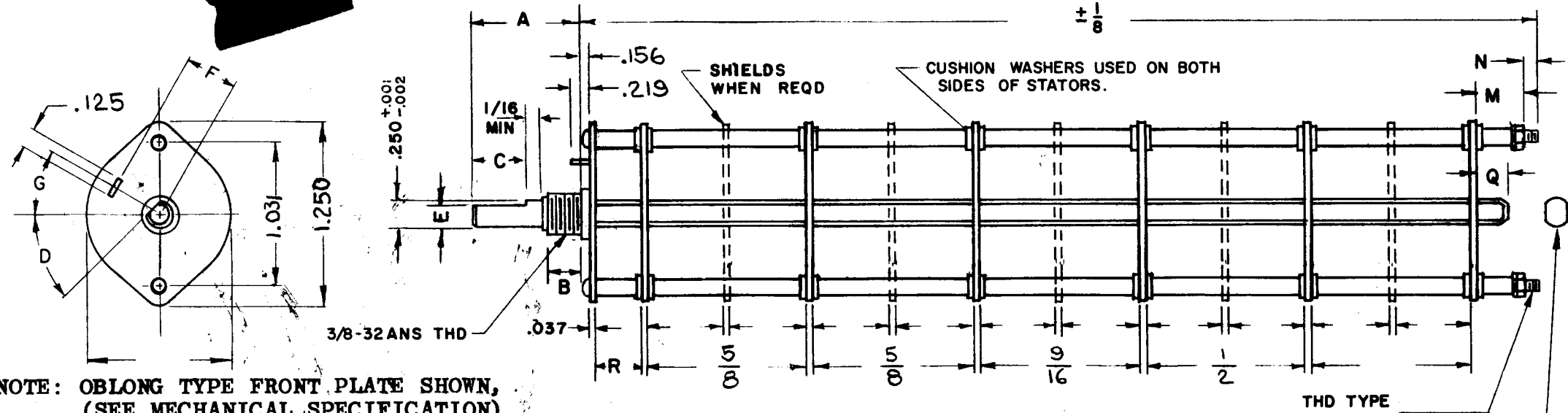
ELECTRICAL SPECIFICATIONS:  
 MAXIMUM RATED VOLTAGE \_\_\_\_\_  
 MAXIMUM RATED CURRENT \_\_\_\_\_

NOTE:  
 FOR S401-13 ("F" TYPE) SWITCHES, THE SHAFT POSITION MUST BE SPECIFIED ON DETAIL "XX" BELOW.



NOTES

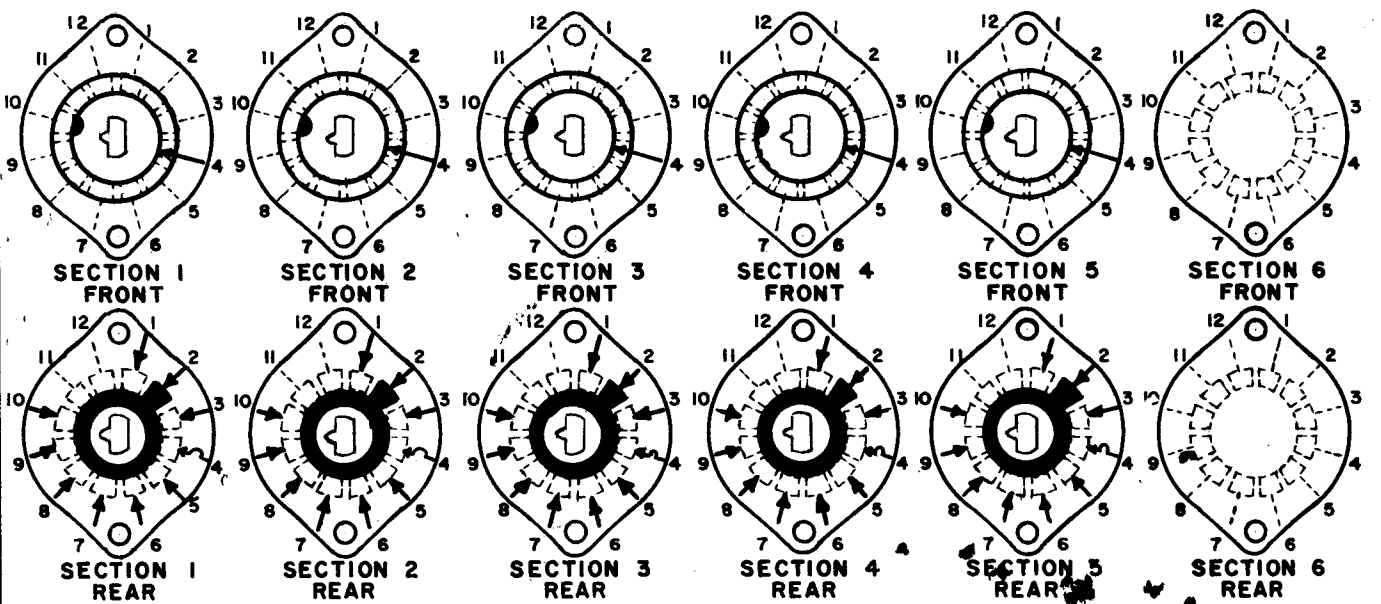
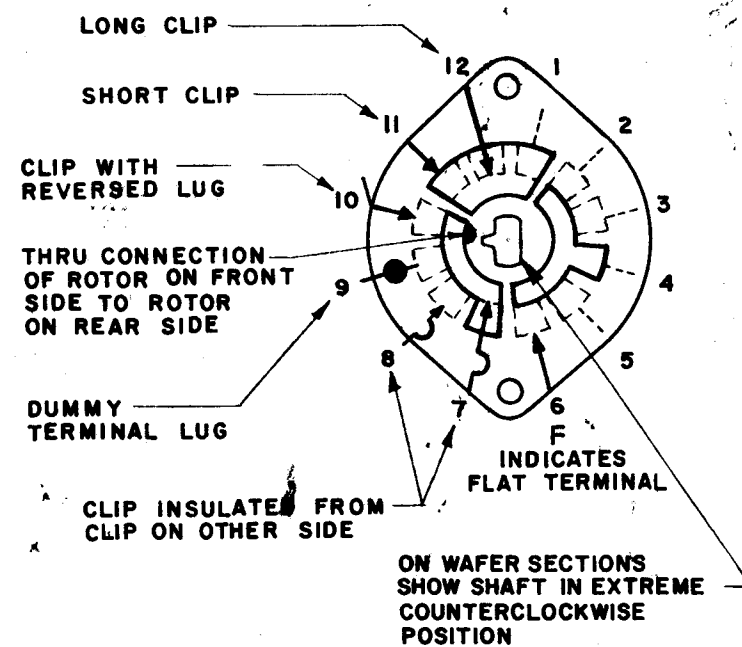
STANDARD DRAWING



NOTE: OBLONG TYPE FRONT PLATE SHOWN, (SEE MECHANICAL SPECIFICATION)

FRONT AND REAR SECTIONS VIEWED FROM FRONT OR KNOB END OF SWITCH IN EXTREME COUNTERCLOCKWISE POSITION.

SEE NOTE (DET. "XX")



SYMBOLS USED IN MARKING PRINT

5	LFSB-1	
QTY./UNIT	MODEL USED ON	ASS'Y. NO.
SCALE	CODE	S401-13
	C	

THE CONTENTS OF THIS DRAWING ARE THE EXCLUSIVE PROPERTY OF THE TECHNICAL MATERIEL CORP. ITS UNAUTHORIZED USE OR REPRODUCTION IN WHOLE OR IN PART IS STRICTLY FORBIDDEN.

REVISIONS						
SYM	DESCRIPTION	DATE	E.M.N. NO.	DRAFT	CHKD	APPD
X	EXPERIMENTAL RELEASE	9.14.64	X	WB		
Ø	ORIGINAL RELEASE FOR PRODUCTION	9.15.64	Ø	IF		
A	SEC. 1,2,3, & 5 REAR TERM. 4 WAS SHORT CLIP ON DETAIL "XX" WAS 160°, ON TOLER. WAS ± 0°30'	10.7.64	12569	WB	@	yc

SWITCH, ROTARY - 12 POINT TYPE "F"

MATERIAL	THE TECHNICAL MATERIEL CORP. MAMARONECK, NEW YORK					
FINISH	TITLE SWITCH, ROTARY (SPECTRUM FILTER)					
UNLESS OTHERWISE SPECIFIED DIMENSIONS ARE IN INCHES AND INCLUDE CHEMICALLY APPLIED OR PLATED FINISHES	DRAWN	DATE	FINAL APPROVAL	DATE		
	CHECKED	DATE				
DECIMALS .X ± .05 .XX ± .01 .XXX ± .005	TOLERANCES	FRACTIONS ± 1/64 ANGLES ± 2°	ELECT. DES.	DATE	SW369	A
			MECH. DES.	DATE		