

DESG.	DIMENSION	TOL.	REMARK
A	3/4	±.015	SHAFT LG. FROM MTG. SURFACE
B	3/8	±.005	BUSH. LG.
C	—	±.015	FLAT LG. (IF REQ.)
D	—	±2°	FLAT ANGLE (IF REQ.)
E	—	±.002	FLAT (IF REQUIRED)
F	.531	±.010	KEY LOCATION (IF REQ.)
G	180°		KEY LOCATION (IF REQ.)
M	3/8	±.010	
N	1/8	±.093	REAR SCR. EXT.
Q	3/16	±.031	REAR SHAFT EXT.
R	7/16		1st SEC. SPACING

TMC PART NUMBER: SW-370 STAMP ON FRONT PLATE
 FRONT PLATE SHAPE: ROUND X OR OBLONG
 MECHANICAL SPECIFICATIONS: NO STOP, 360° ROTATION
 NUMBER OF SECTIONS - 1 (INDEX-DUAL BALL)
 NUMBER OF POSITIONS - 2
 ANGLE OF THROW - 30°

CONTACTS:
 SHORTING TYPE, SECTIONS _____
 NON SHORTING TYPE, SECTIONS 1
 SILVER PLATED BRASS, SECTIONS _____
 SILVER ALLOY, SECTIONS 1

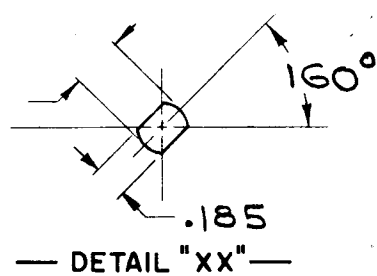
WAFERS:
 BAKELITE, SECTIONS 1
 CERAMIC, SECTIONS _____
 MYCALEX, SECTIONS _____
 IMPREGNATION (IF REQ.) _____

FINISH REQUIREMENTS:
 ARMY _____ NAVY _____ COMMERCIAL X
 SALT TEST (IF REQ.) _____

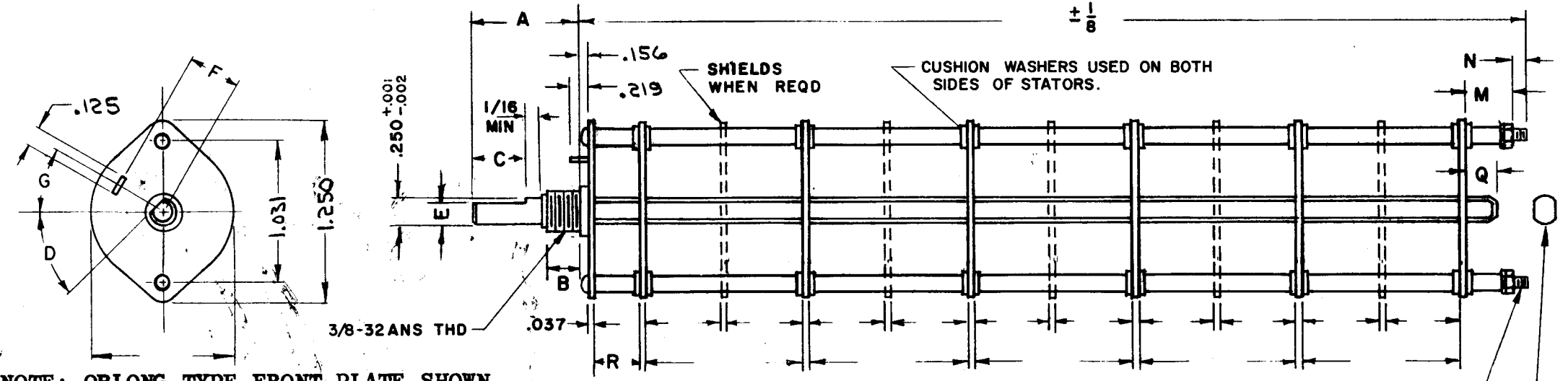
HARDWARE, TO BE SUPPLIED BY MANUFACTURER:
 1 QUAN. 3/8-32 NUTS 1/2 ACROSS FLATS
 MATERIAL STEEL PLATING CADMIUM
 1 QUAN. 3/8 INTERNAL TOOTH LOCKWASHER
 MATERIAL STEEL PLATING CADMIUM

ELECTRICAL SPECIFICATIONS:
 MAXIMUM RATED VOLTAGE _____
 MAXIMUM RATED CURRENT _____

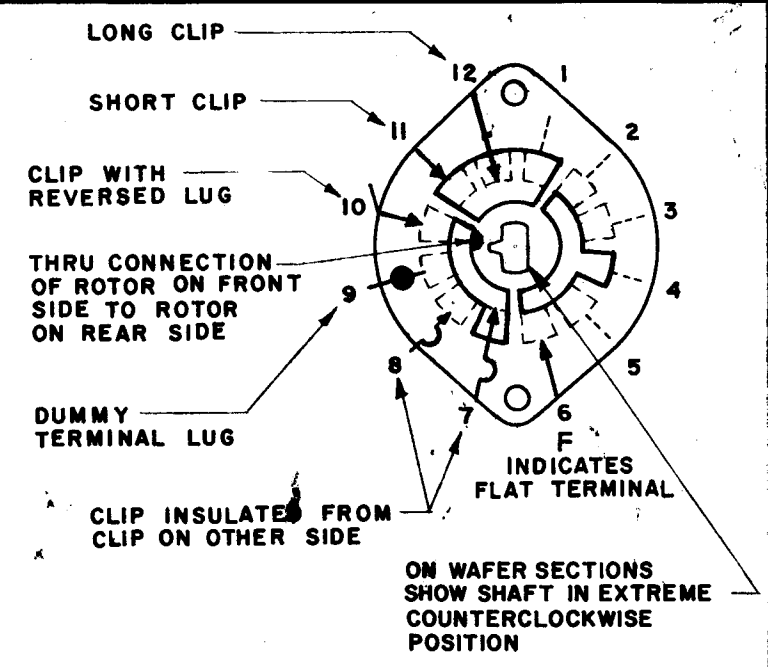
NOTE:
 FOR S401-13 ("F" TYPE) SWITCHES, THE SHAFT POSITION MUST BE SPECIFIED ON DETAIL "XX" BELOW.



NOTES



NOTE: OBLONG TYPE FRONT PLATE SHOWN, (SEE MECHANICAL SPECIFICATION)



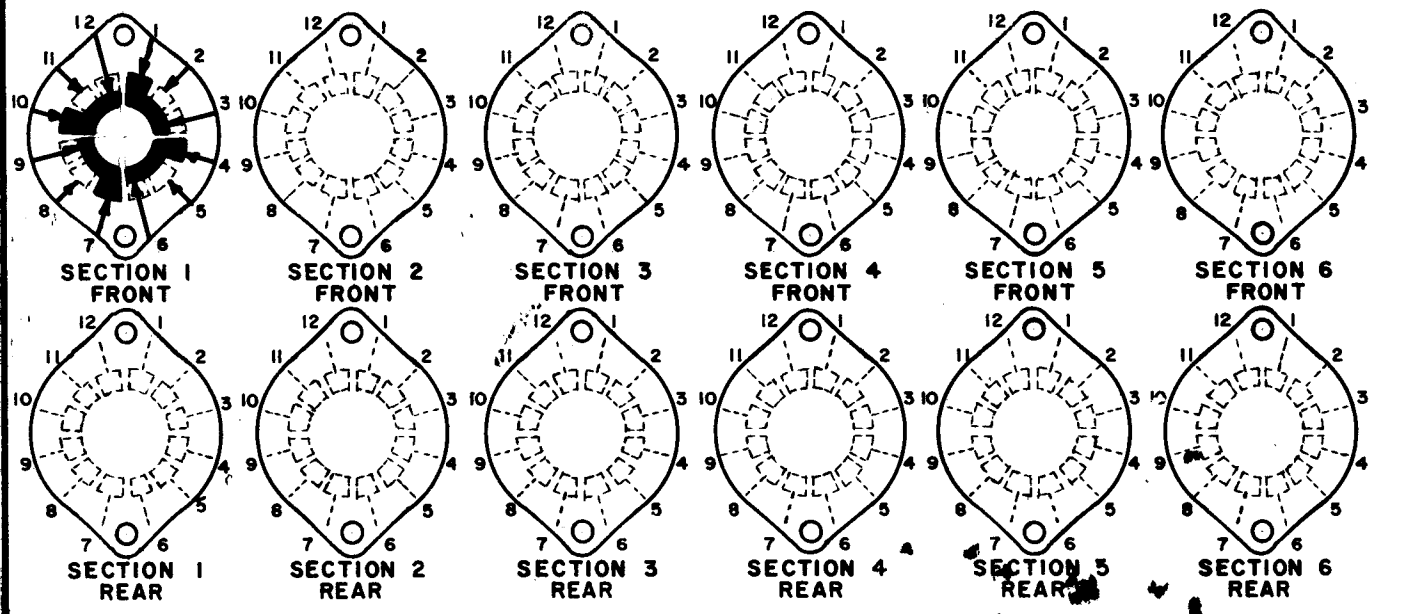
SYMBOLS USED IN MARKING PRINT

Q'TY./UNIT	MODEL USED ON	ASS'Y. NO.
SCALE	CODE	5401-13
	C	

THE CONTENTS OF THIS DRAWING ARE THE EXCLUSIVE PROPERTY OF THE TECHNICAL MATERIEL CORP. ITS UNAUTHORIZED USE OR REPRODUCTION IN WHOLE OR IN PART IS STRICTLY FORBIDDEN.

REVISIONS						
SYM	DESCRIPTION	DATE	E.M.N. NO.	DRAFT	CHKD	APPD
X	EXPERIMENTAL RELEASE	9-3-64	X	J. L.		
Ø	ORIGINAL RELEASE FOR PRODUCTION	9-15-64	Ø	J. L.		

FRONT AND REAR SECTIONS VIEWED FROM FRONT OR KNOB END OF SWITCH IN EXTREME COUNTERCLOCKWISE POSITION. SEE NOTE (DET. "XX")



SWITCH, ROTARY - 12 POINT TYPE - F

MATERIAL	THE TECHNICAL MATERIEL CORP. GELMAN MAMARONECK, NEW YORK				
FINISH	TITLE SWITCH, ROTARY (FREQUENCY MULTIPLIER)				
UNLESS OTHERWISE SPECIFIED DIMENSIONS ARE IN INCHES AND INCLUDE CHEMICALLY APPLIED OR PLATED FINISHES	DRAWN	DATE	FINAL APPROVAL		DATE
	CHECKED	DATE	R. L.		
DECIMALS .X ± .05 .XX ± .01 .XXX ± .005 FRACTIONS ± 1/64 ANGLES ± 0° 30'	ELECT. DES.	DATE	SW 370		Ø
	MECH. DES.	DATE	SHEET		REV. LTR.