

DESG.	DIMENSION	TOL.	REMARK
A	2-13/16	±.015	SHAFT LG. FROM MTG. SURFACE
B	3/8	±.005	BUSH. LG.
C	-#	±.015	FLAT LG. (IF REQ.)
D	-#	±2°	FLAT ANGLE (IF REQ.)
E	-#	±.002	FLAT (IF REQUIRED)
F	.531	±.010	KEY LOCATION (IF REQ.)
G	180°		KEY LOCATION (IF REQ.)
M	3/8	±.010	
N	1/8	±.093	REAR SCR. EXT.
Q	3/16	±.031	REAR SHAFT EXT.
R	5/16		1st SEC. SPACING

TMC PART NUMBER: SW-376 STAMP ON FRONT PLATE  
 FRONT PLATE SHAPE: ROUND X OR OBLONG  
 MECHANICAL SPECIFICATIONS: INDEX DUAL BALL

NUMBER OF SECTIONS- 4  
 NUMBER OF POSITIONS- 5  
 ANGLE OF THROW- 30°

CONTACTS:  
 SHORTING TYPE, SECTIONS \_\_\_\_\_  
 NON SHORTING TYPE, SECTIONS 4  
 SILVER PLATED BRASS, SECTIONS \_\_\_\_\_  
 SILVER ALLOY, SECTIONS 4

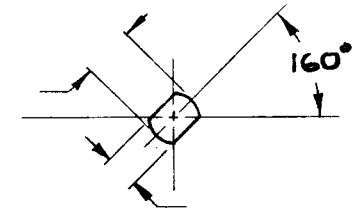
WAFERS:  
 BAKELITE, SECTIONS 4  
 CERAMIC, SECTIONS \_\_\_\_\_  
 MYCALEX, SECTIONS \_\_\_\_\_  
 IMPREGNATION (IF REQ.) \_\_\_\_\_

FINISH REQUIREMENTS:  
 ARMY NAVY COMMERCIAL X  
 SALT TEST (IF REQ.) \_\_\_\_\_

HARDWARE, TO BE SUPPLIED BY MANUFACTURER:  
 1 QUAN. 3/8 -32 NUTS 1/2 ACROSS FLATS  
 MATERIAL STEEL PLATING CADMIUM  
 1 QUAN. 3/8 INTERNAL TOOTH LOCKWASHER  
 MATERIAL STEEL PLATING CADMIUM

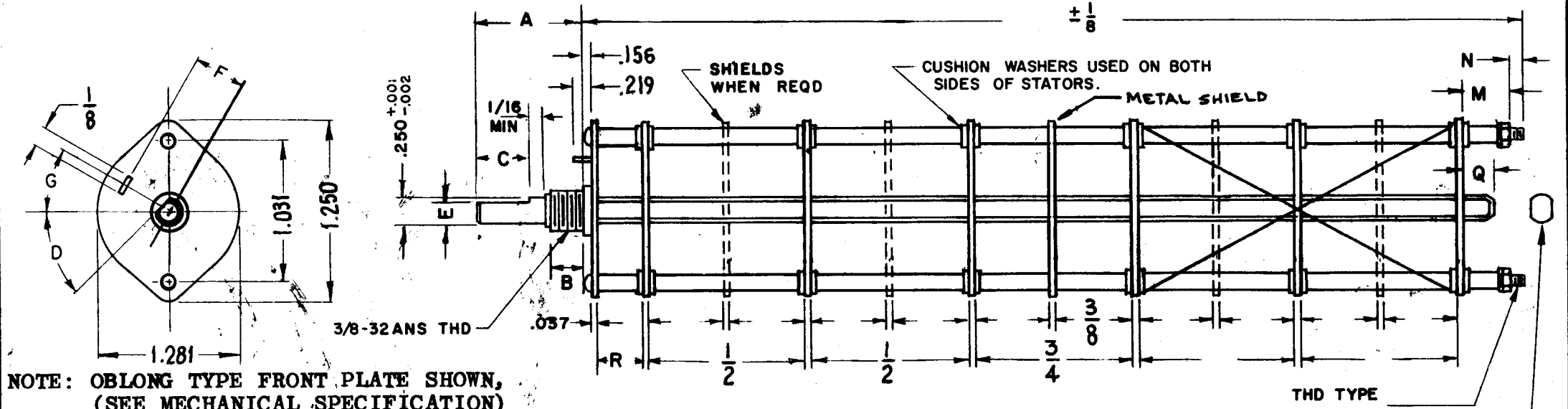
ELECTRICAL SPECIFICATIONS:  
 MAXIMUM RATED VOLTAGE \_\_\_\_\_  
 MAXIMUM RATED CURRENT \_\_\_\_\_

NOTE:  
 FOR S401-13 ("F" TYPE) SWITCHES, THE SHAFT POSITION MUST BE SPECIFIED ON DETAIL "XX" BELOW.



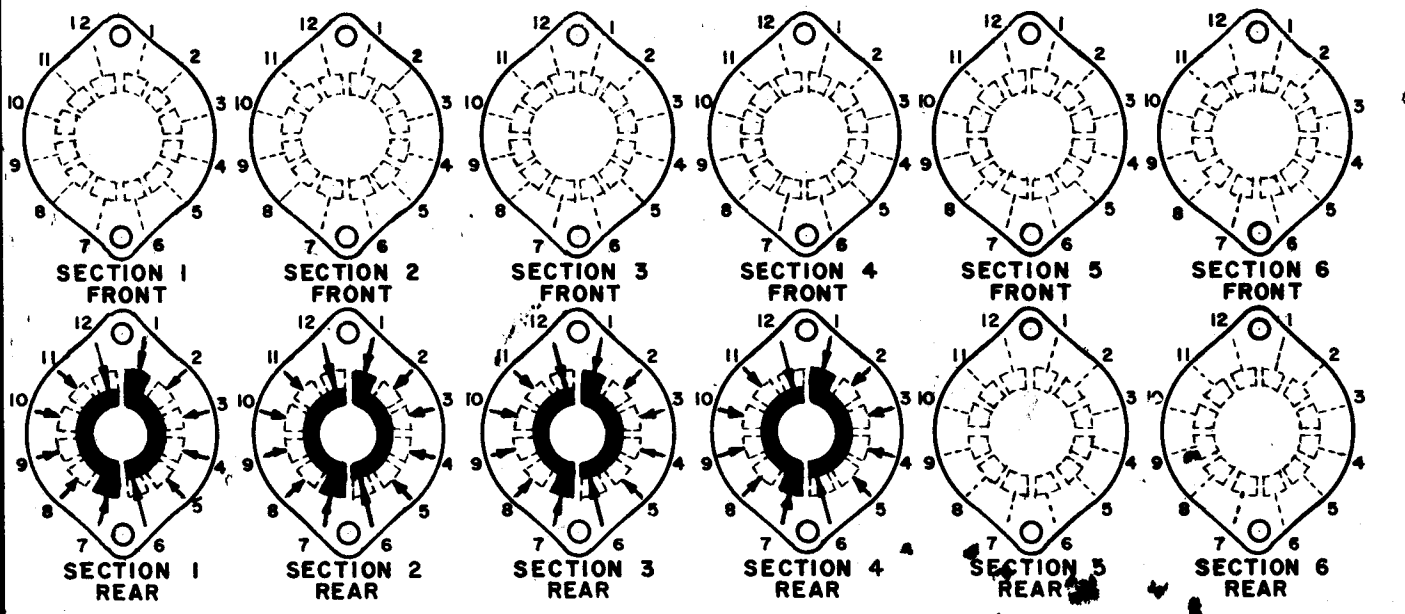
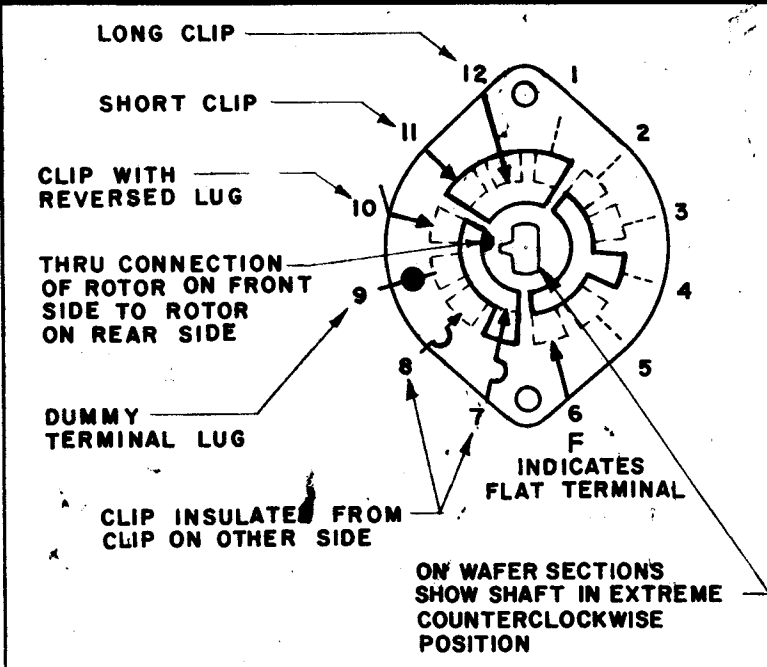
— DETAIL "XX" —

NOTES



NOTE: OBLONG TYPE FRONT PLATE SHOWN, (SEE MECHANICAL SPECIFICATION)

FRONT AND REAR SECTIONS VIEWED FROM FRONT OR KNOB END OF SWITCH IN EXTREME COUNTERCLOCKWISE POSITION. SEE NOTE (DET. "XX")



SYMBOLS USED IN MARKING PRINT

1	VLRB-1	RF HEAD
Q'TY./UNIT	MODEL USED ON	ASS'Y. NO.
SCALE	CODE	
	C	

THE CONTENTS OF THIS DRAWING ARE THE EXCLUSIVE PROPERTY OF THE TECHNICAL MATERIEL CORP. ITS UNAUTHORIZED USE OR REPRODUCTION IN WHOLE OR IN PART IS STRICTLY FORBIDDEN.

REVISIONS						
SYM	DESCRIPTION	DATE	E.M.N. NO.	DRAFT	CHKD	APPD
X	EXPERIMENTAL RELEASE	10-13-64	X	SRG		
Ø	ORIGINAL RELEASE FOR PRODUCTION	8/7/69	Ø	W		

SWITCH, ROTARY - 12 POINT TYPE "F"

MATERIAL	THE TECHNICAL MATERIEL CORP. GELLMAN MAMARONECK, NEW YORK				
FINISH	TITLE SWITCH, ROTARY BAND				
UNLESS OTHERWISE SPECIFIED DIMENSIONS ARE IN INCHES AND INCLUDE CHEMICALLY APPLIED OR PLATED FINISHES	DRAWN	DATE	FINAL APPROVAL	DATE	
	SRG	10-13-64	[Signature]	8/7/69	
DECIMALS: .X ± .05, .XX ± .01, .XXX ± .005 FRACTIONS: ± 1/64, ANGLES: ± 0° 30'	CHECKED	DATE	SW376		Ø
		10-14-64			
TOLERANCES	ELECT. DES.	DATE	SHEET		REV. LTR.
	[Signature]	10-14-64			