

A
SW 378

REVISIONS					
SYM	DESCRIPTION	DATE	E.M.N. NO.	DRAFT	CHKD APPD
Ø	ORIGINAL RELEASE FOR PRODUCTION	4/9/65	Ø	Ø	
A	CLERICAL CHANGE	5-3-65			

- NOTE:**
1. VIEW WAFERS FROM SOLENOID END OF SWITCH.
 2. REAR SIDE IS VIEWED AS IF LOOKING THROUGH WAFER, FROM SOLENOID END.
 3. ORIENTATION OF WAFER IS WITH PIN 1 IN THE ONE O'CLOCK POSITION AS VIEWED FROM THE SOLENOID END WITH CONNECTING WIRES OR TERMINALS FACING DOWN.
 4. ROTATION IN DIRECTION OF ARROW VIEWED FROM SOLENOID END.
 5. WAFERS SHOWN IN NO. 1 POSITION.

SWITCH SPECIFICATIONS

MECHANICAL

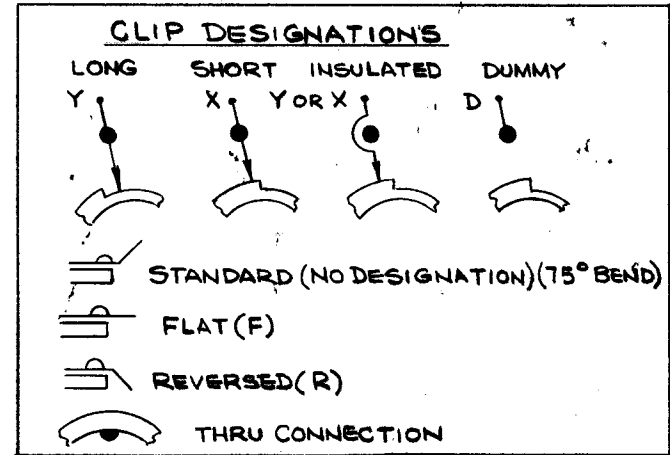
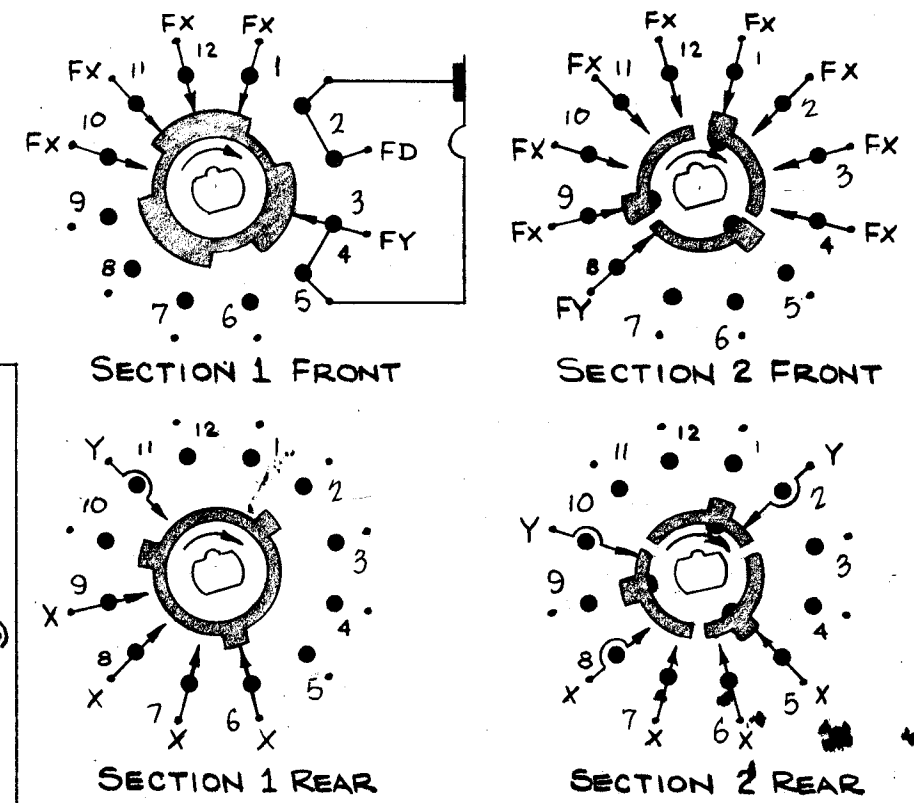
- NO. OF SECTIONS: 2
- NO. OF POSITIONS: 4 THROW POSITIONS
- ANGLE OF THROW: 30°
- CONTACT MATERIAL: SOLID SILVER ALLOY
- CONTACT TYPE: NON-SHORTING TABS
- WAFER MATERIAL: KEL-F
- FINISH: 50 HOUR SALT SPRAY
- OPERATING TEMP: -55°C TO 80°C

ELECTRICAL

- CURRENT RATING: CARRY: 5 TO 7 AMPS RESISTIVE MAX.
- BREAK @ 24 VDC: 2.5 AMPS RESISTIVE MAX.
- BREAK @ 115 VDC: .5 AMPS RESISTIVE MAX.
- DIELECTRIC STRENGTH: 1000 V CLIP TO CLIP, 500 V INSULATED CLIPS BACK TO BACK.

COIL SPECIFICATIONS

- SOLENOID SIZE: 3B
- COIL RESISTANCE @ 20°C: 110Ω ± 10%
- VOLTAGE: 115 VDC
- GROSS STARTING TORQUE FOR 1/10 DUTY CYCLE AND 35° STROKE - 2.2 POUND INCHES @ 20°C COIL TEMP.
- DIELECTRIC STRENGTH: 1200 V RMS



NOTES

Q'TY./UNIT	MODEL USED ON	ASS'Y. NO.
SCALE	CODE	5401-281 126606-001

THE CONTENTS OF THIS DRAWING ARE THE EXCLUSIVE PROPERTY OF THE TECHNICAL MATERIEL CORP. ITS UNAUTHORIZED USE OR REPRODUCTION IN WHOLE OR IN PART IS STRICTLY FORBIDDEN.

REQ'D.	ITEM	PART NUMBER	DESCRIPTION	SYMBOL
POSE LIST OF MATERIAL				
MATERIAL		THE TECHNICAL MATERIEL CORP. MAMARONECK, NEW YORK		
FINISH		SWITCH, ROTARY, SOLENOID		
UNLESS OTHERWISE SPECIFIED DIMENSIONS ARE IN INCHES AND INCLUDE CHEMICALLY APPLIED OR PLATED FINISHES		DRAWN H. AUSTIN	DATE 3-8-65	FINAL APPROVAL
DECIMALS .X ± .05 .XX ± .01 .XXX ± .005		CHECKED [Signature]	DATE 3-8-65	DATE
FRACTIONS ± 1/64		ELECT. DES. [Signature]	DATE 4/19/65	SW 378
ANGLES ± 0° 30'		MECH. DES. [Signature]	DATE	A
TOLERANCES		SHEET		REV. LTR.