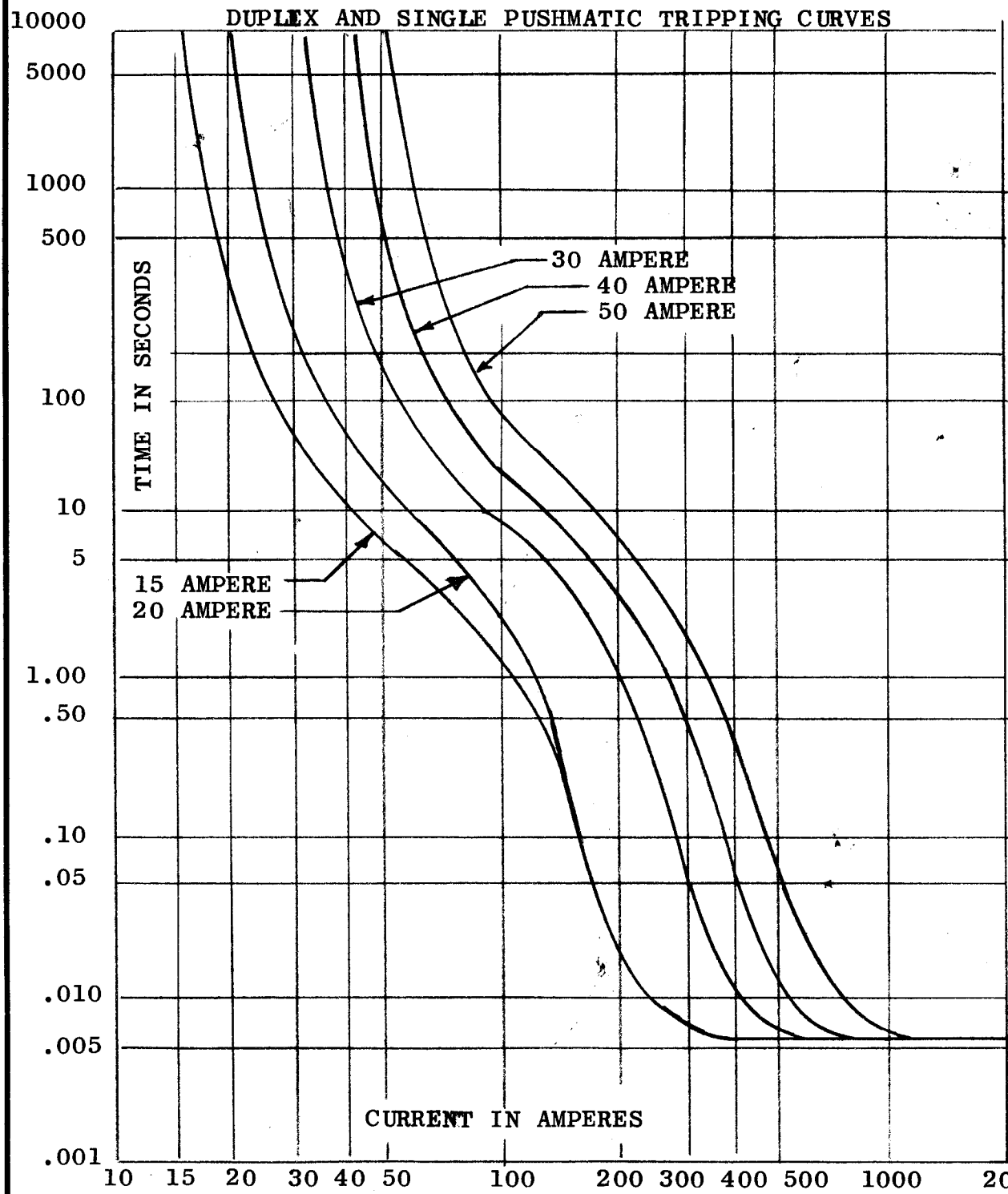
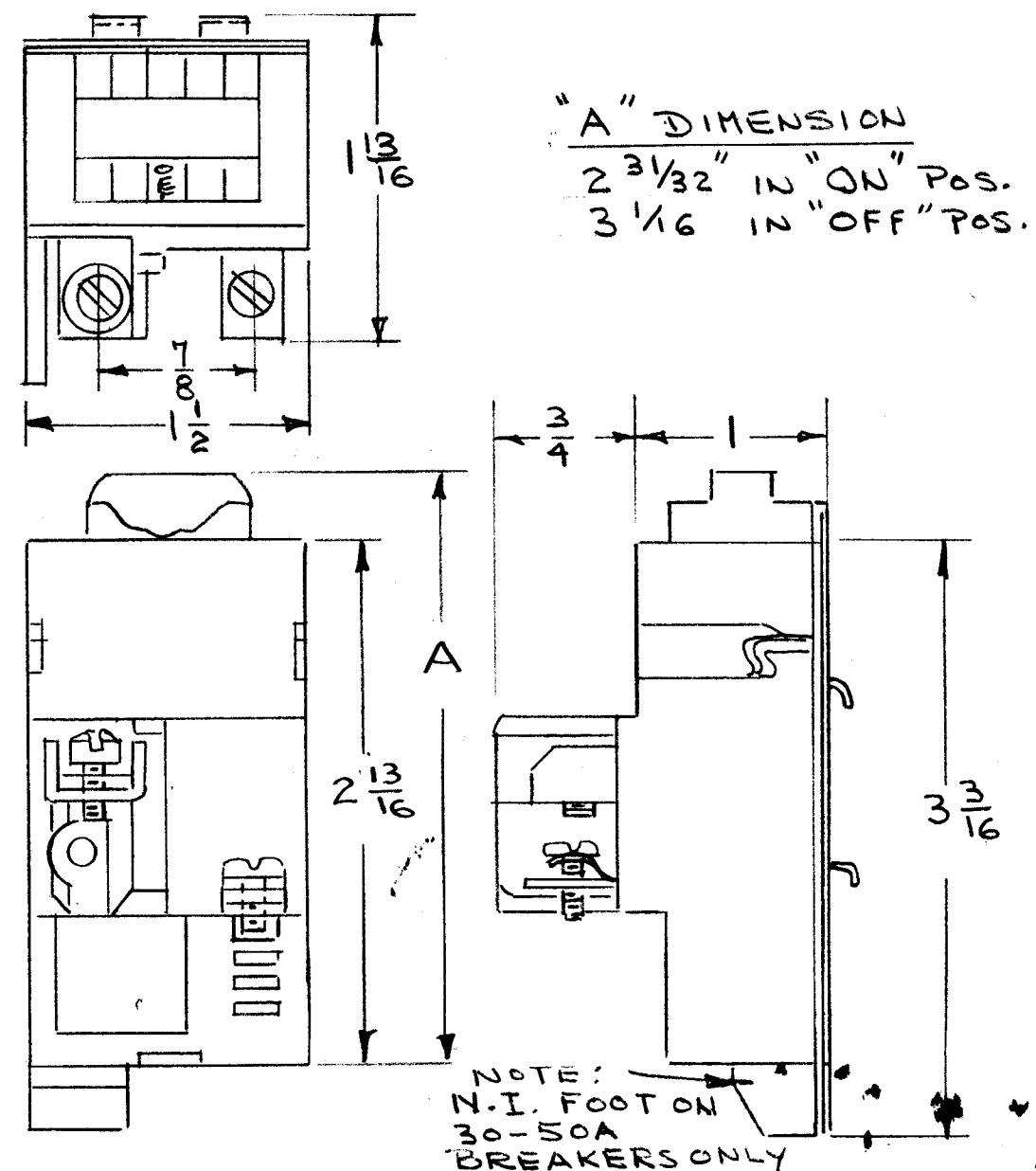


| TMC PART NO. | MFGR. NO. | AMP | VOLTAGE     | POLES |
|--------------|-----------|-----|-------------|-------|
| SW381-1      | P115      | 15  | 120/240 VAC | 1     |
| SW381-2      | P120      | 20  | 120/240 VAC | 1     |

| REVISIONS |                                 |        |            |       |           |
|-----------|---------------------------------|--------|------------|-------|-----------|
| SYM       | DESCRIPTION                     | DATE   | E.M.N. NO. | DRAFT | CHKD APPD |
| Ø         | ORIGINAL RELEASE FOR PRODUCTION | 6-7-65 |            | WPD   |           |



SW381



**NOTES**

|   |                |
|---|----------------|
| TSTE-10K  |                |
| Q'TY./UNIT  | MODEL USED ON  |
| SCALE #   | CODE C S401-88 |
| ASS'Y. NO.  |                |
| THE CONTENTS OF THIS DRAWING ARE THE EXCLUSIVE PROPERTY OF THE TECHNICAL MATERIEL CORP. ITS UNAUTHORIZED USE OR REPRODUCTION IN WHOLE OR IN PART IS STRICTLY FORBIDDEN. |                |

| REQ'D.  | ITEM | PART NUMBER | DESCRIPTION   | SYMBOL   |
|---|------|-------------|---|--|
| <b>BUDETTI LIST OF MATERIAL</b>   |      |             |   |  |
| MATERIAL  |      |             | <b>THE TECHNICAL MATERIEL CORP.<br/>MAMARONECK, NEW YORK</b>        |  |
| FINISH  |      |             | TITLE<br><b>CIRCUIT BREAKER</b>                                     |  |
| UNLESS OTHERWISE SPECIFIED<br>DIMENSIONS ARE IN INCHES AND INCLUDE<br>CHEMICALLY APPLIED OR PLATED FINISHES |      |             | DRAWN <i>WPD</i><br>CHECKED <i>JCB</i><br>ELECT. DES.<br>MECH. DES. | DATE<br>6/7/65<br>DATE<br>DATE   |
| DECIMALS<br>.X ± .05<br>.XX ± .01<br>.XXX ± .005  |      |             | FRACTIONS<br>± 1/64<br>ANGLES<br>± 0° 30'                           | FINAL APPROVAL<br><i>[Signature]</i><br>DATE<br>6/9/65<br>SHEET<br>REV. LTR. |
|   |      |             | SW381   | Ø  |